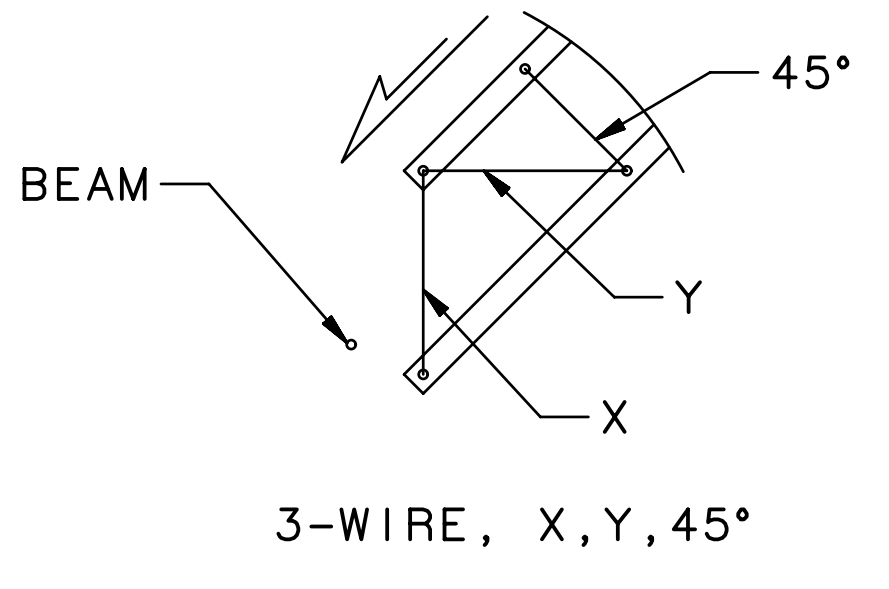
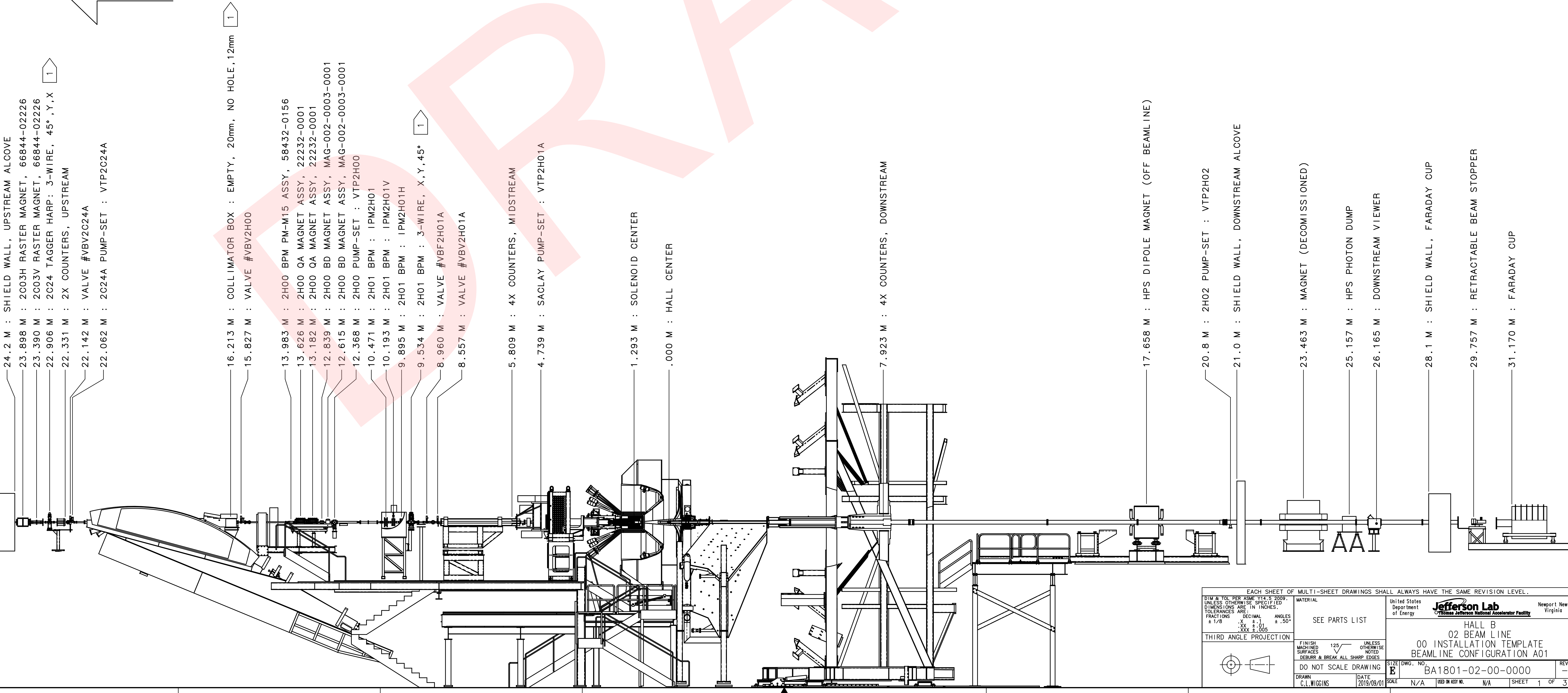


REVISION HISTORY		
ZONE	REV	DESCRIPTION

- NOTES
- ELEMENTS CROSS THE ELECTRON BEAM AS READ (FROM LEFT-TO-RIGHT)
 - MACHINE CENTER IS 400.0948 METERS UPSTREAM OF 'HALL CENTER'
 - CONTENTS:
PAGE 1: COMPONENT POSITIONING FOR REFERENCE BY COUNTING-ROOM & MCC OPERATORS
PAGE 2: COMPONENT IDENTIFICATION FOR INSTALLATION BY TECHNICAL STAFF
PAGE 3: IDENTIFICATION OF MATERIALS IN THE BEAM, & BEAMLINE SHIELDING
 - BEAM-TUBE IDENTIFICATION:
FORMAT: A - B - C, L
A = UPSTREAM FLANGE SIZE
B = TUBE OD
C = DOWNSTREAM FLANGE SIZE
D = LENGTH
CONFLAT FLANGES UNLESS SPECIFIED



FOR CONTINUATION
SEE DRAWING NO.
28405-0034



- 24.2 M : SHIELD WALL, UPSTREAM ALCOVE
- 23.898 M : 2C03H RASTER MAGNET, 66844-02226
- 23.390 M : 2C03V RASTER MAGNET, 66844-02226
- 22.906 M : 2C24 Tagger HARP: 3-WIRE, 45°, Y, X
- 22.331 M : 2X COUNTERS, UPSTREAM
- 22.142 M : VALVE #VBV2024A
- 22.062 M : 2C24A PUMP-SET : VTP2024A

- 16.213 M : COLLIMATOR BOX : EMPTY, 20mm, NO HOLE, 12mm
- 15.827 M : VALVE #VBV2H00
- 13.983 M : 2H00 BPM PM-M15 ASSY, 58432-0156
- 13.626 M : 2H00 QA MAGNET ASSY, 22232-0001
- 13.182 M : 2H00 QA MAGNET ASSY, 22232-0001
- 12.839 M : 2H00 BD MAGNET ASSY, MAG-002-0003-0001
- 12.615 M : 2H00 BD MAGNET ASSY, MAG-002-0003-0001
- 12.368 M : 2H00 PUMP-SET : VTP2H00
- 10.471 M : 2H01 BPM : IPM2H01
- 10.193 M : 2H01 BPM : IPM2H01V
- 9.895 M : 2H01 BPM : IPM2H01H
- 9.534 M : 2H01 BPM : 3-WIRE, X,Y,45°
- 8.960 M : VALVE #VBF2H01A
- 8.557 M : VALVE #VBV2H01A

- 5.809 M : 4X COUNTERS, MIDSTREAM
- 4.739 M : SACLAY PUMP-SET : VTP2H01A
- 1.293 M : SOLENOID CENTER
- .000 M : HALL CENTER

- 7.923 M : 4X COUNTERS, DOWNSTREAM
- 17.658 M : HPS DIPOLE MAGNET (OFF BEAMLINE)
- 20.8 M : 2H02 PUMP-SET : VTP2H02
- 21.0 M : SHIELD WALL, DOWNSTREAM ALCOVE
- 23.463 M : MAGNET (DECOMMISSIONED)
- 25.157 M : HPS PHOTON DUMP
- 26.165 M : DOWNSTREAM VIEWER
- 28.1 M : SHIELD WALL, FARADAY CUP
- 29.757 M : RETRACTABLE BEAM STOPPER
- 31.170 M : FARADAY CUP

EACH SHEET OF MULTI-SHEET DRAWINGS SHALL ALWAYS HAVE THE SAME REVISION LEVEL.

UNIT & TOL PER ASME Y14.5 2009. UNLESS OTHERWISE SPECIFIED DIMENSIONS ARE IN INCHES. TOLERANCES ARE: FRACTIONS: ± 1/32 DECIMAL: ± .01 ANGLES: ± .50°

THIRD ANGLE PROJECTION

FINISH: MACHINED SURFACES: DEBUR & BREAK ALL SHARP EDGES

DO NOT SCALE DRAWING

DRAWN: C.L. WIGGINS DATE: 2019/09/01

MATERIAL: SEE PARTS LIST

United States Department of Energy

Jefferson Lab
Thomas Jefferson National Accelerator Facility

Newport News Virginia

HALL B
02 BEAM LINE
00 INSTALLATION TEMPLATE
BEAMLINE CONFIGURATION A01

SIZE: DWG. NO. BA1801-02-00-0000 REV. -

SCALE: N/A (REQ ON ASSY NO.) SHEET 1 OF 3

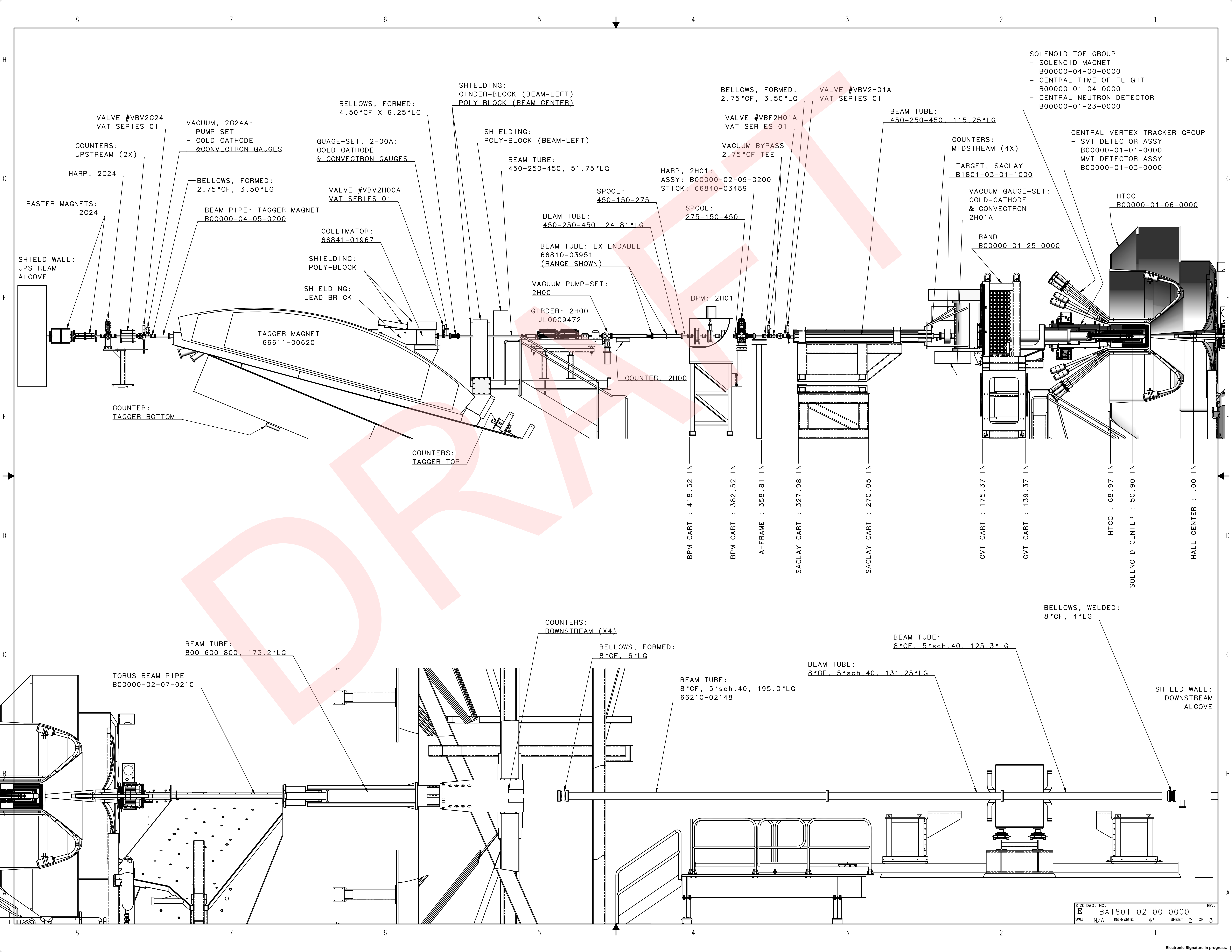


TABLE -A-
MATERIALS IN THE BEAM LINE

ITEM	DESCRIPTION		MATERIAL	THICKNESS	LOCATION (Z)
I	TARGET CELL ENTRY*	B00000-03-01-0100	ALUMINUM	30um	1317.69mm
II	TARGET CELL EXIT*	B00000-03-01-0100	ALUMINUM	30um	1267.69mm
III	SCATTERING CHAMBER EXIT	B00000-03-01-0300	ALUMINUM	50um	1014.05mm
IV	VACUUM VOL. ENTRY (DOWNSTREAM)	B00000-02-07-0210	ALUMINUM	75um	311.24mm

*PER SURVEY TRANSMITTAL #B1829

