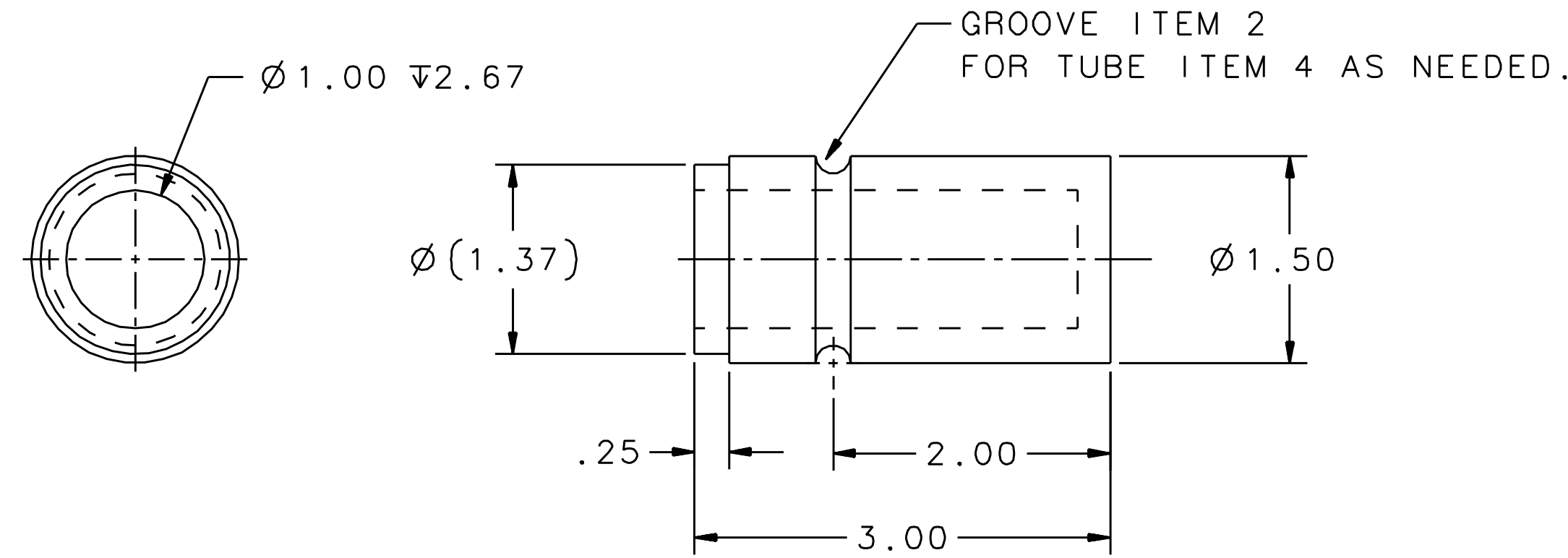
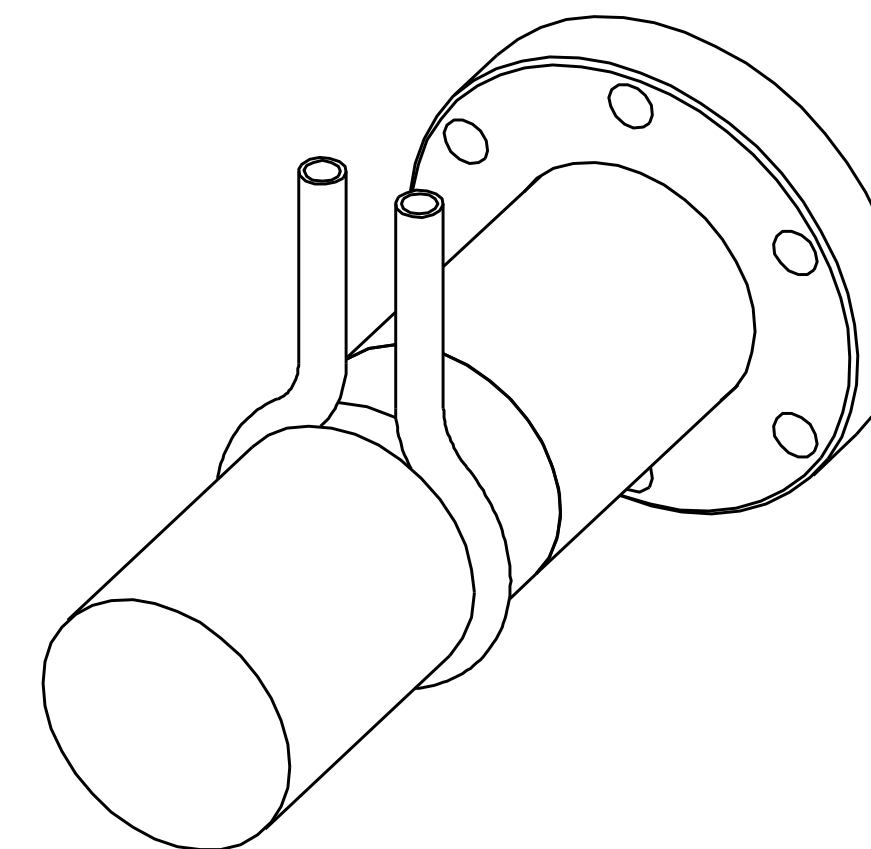
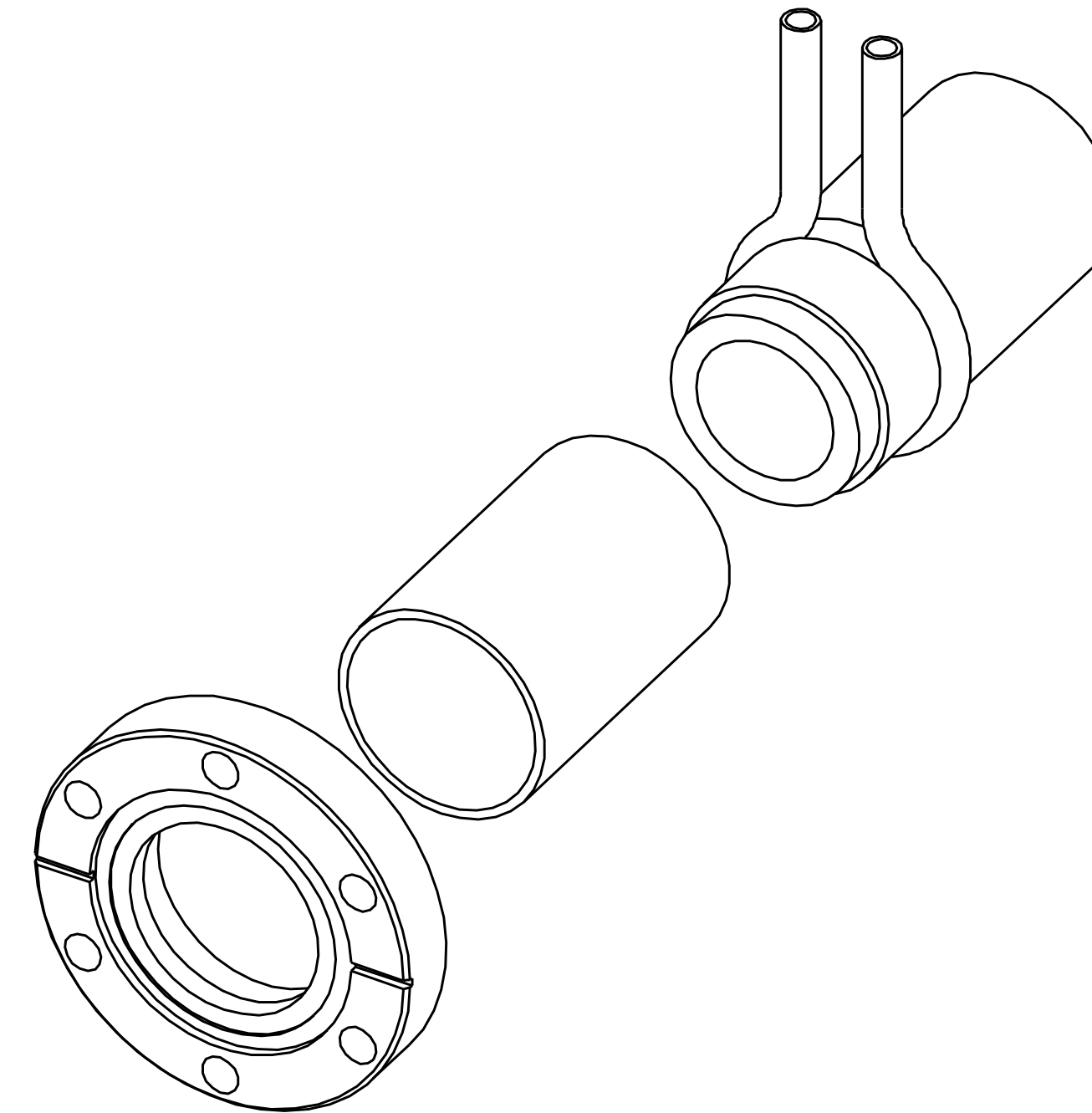


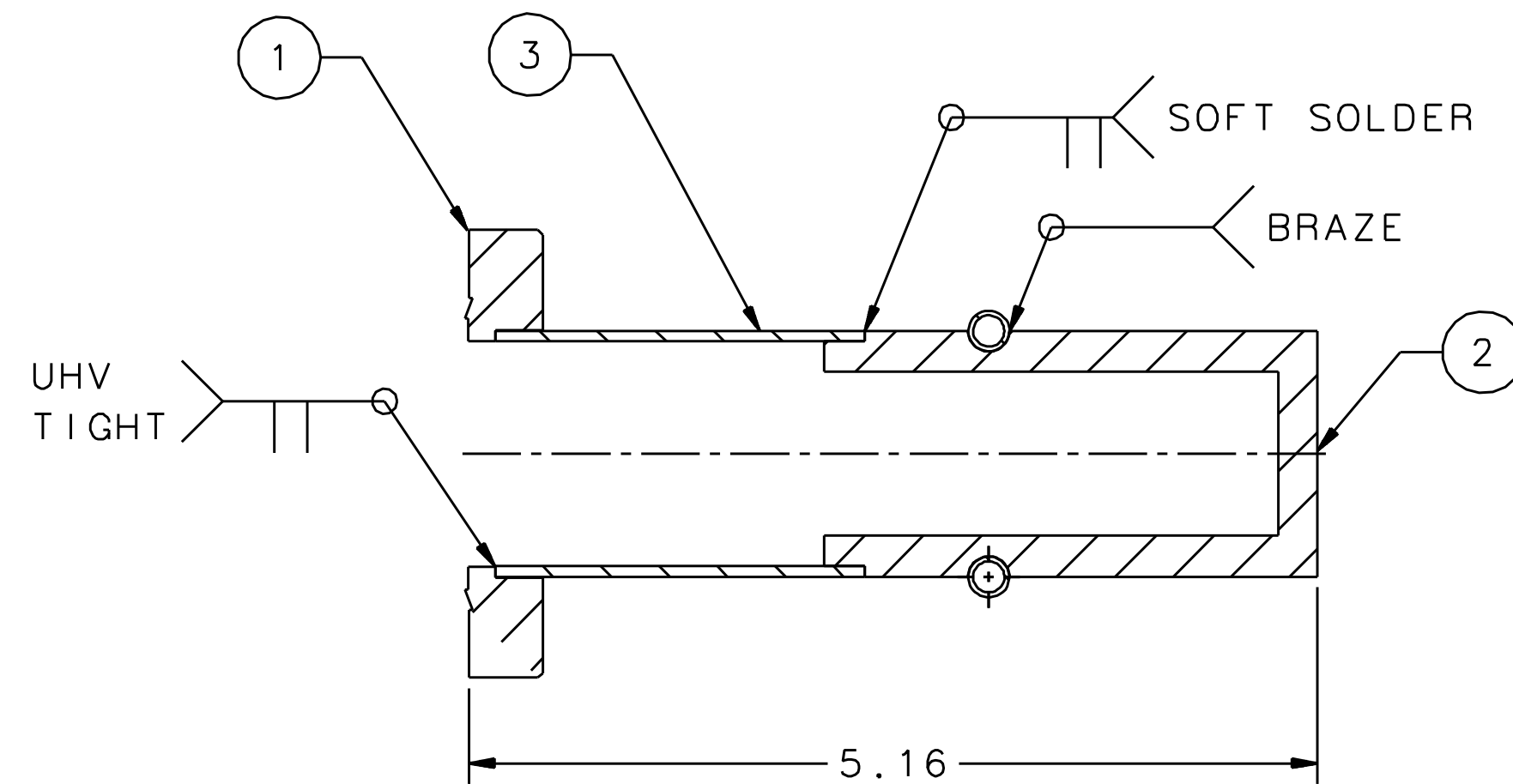
REVISION HISTORY				
ZONE	REV	DESCRIPTION	DATE	APPROVED



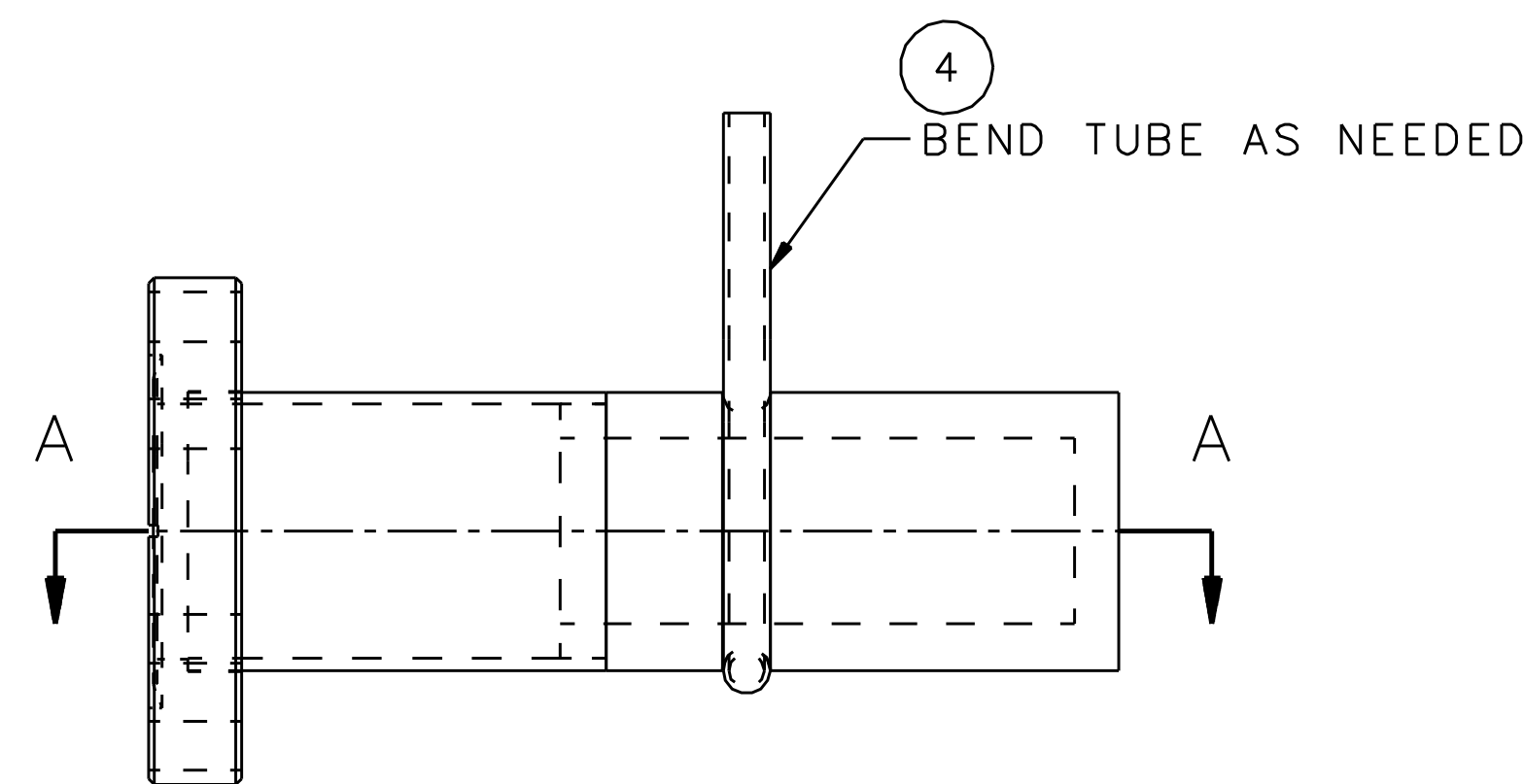
ITEM 2



ISOMETRIC



SECTION A-A



NOTES:

- ASME Y14.5-2009 IS USED FOR ALL DIMENSIONING AND TOLERANCING.
- USE THE FOLLOWING CEBAF SPECIFICATIONS:
 FABRICATION OF UHV EQUIPMENT: #22631-S-001
 CLEANING & HANDLING OF UHV COMPONENTS: #22632-S-001
 WELDING OF UHV COMPONENTS: #22633-S-001
 HELIUM LEAK TEST FOR UHV COMPONENTS: #22634-S-001
- PROTECT FLANGE FACE DURING AND AFTER PROCESSING WITH SUITABLE PLASTIC CAP. DAMAGE TO FLANGE FACE IS UNACCEPTABLE.
- ALL TOLERANCES APPLY AFTER WELDING UNLESS OTHERWISE STATED.
- PART NUMBER JL0015733 TO BE ENGRAVED, ETCHED OR STAMPED ON SIDE OF FLANGE USING .25 HIGH CHARACTERS.

QTY REQD	ITEM NO	PART OR IDENTIFYING NO	NOMENCLATURE OR DESCRIPTION	MATERIAL SPECIFICATION	NOTES
1	4	-	1/4 ACR TUBE	COPPER	-
1	3	-	TUBE 1-1/2 OD X 0.065 THK	STAINLESS STEEL TYPE 304	-
1	2	-	COPPER PLUG	COPPER	-
1	1	-	CF FLANGE 2-3/4 OD X 1-1/2 NOM ID, NR	STAINLESS STEEL TYPE 304	-

FOR JLAB INTERNAL USE ONLY		DIM & TOL PER ASME Y14.5, UNLESS OTHERWISE SPECIFIED DIMENSIONS ARE IN INCHES. TOLERANCES ARE: FRACTIONS DECIMAL ANGLES ± N/A X ± .1 ± .50 XX ± .01 XXX ± .005	MATERIAL SEE PARTS LIST	United States Department of Energy Jefferson Lab Thomas Jefferson National Accelerator Facility Newport News Virginia	
WELD CLASS	WELD SPECIFICATION BPS 026			ACC INJECTOR (DETAILS & ASSEMBLIES) BUBBLE CHAMBER CU RADIATOR WINDOW ASSY	
WELD ANALYSIS	NA	THIRD ANGLE PROJECTION 	FINISH MACHINE SURFACES UNLESS OTHERWISE NOTED DEBURR & BREAK ALL SHARP EDGES	DO NOT SCALE DRAWING	SIZE DWG. NO. D JL0015733
DRAWN S.A. GREGORY		DATE 10JUN14	SCALE 1:1	USED ON ASSY NO. JL0015130	REV. - SHEET 1 OF 1