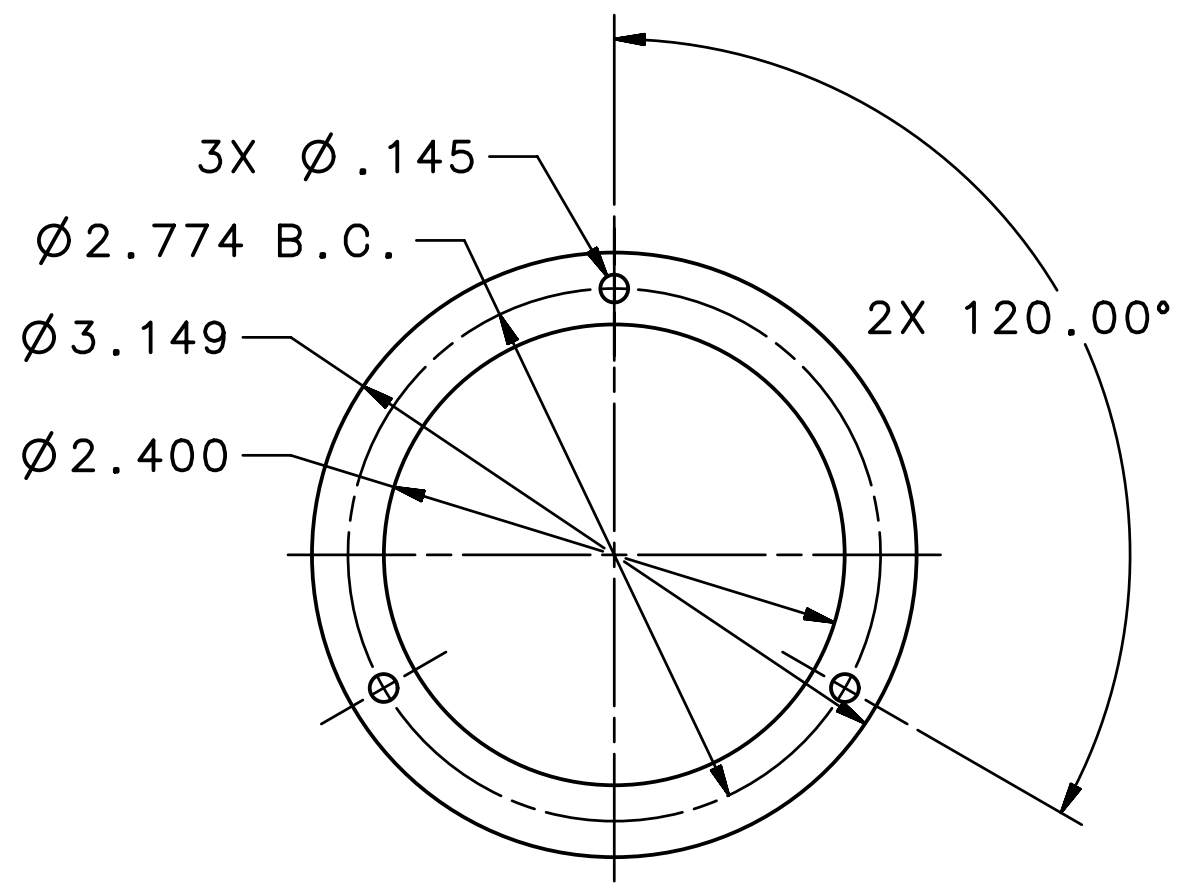

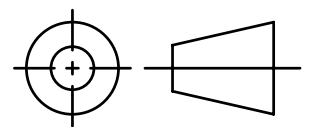
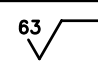


REVISION HISTORY		
REV	DESCRIPTION	DATE/REVISER



NOTES:

- USE THE FOLLOWING JLAB SPECIFICATIONS:
 FABRICATION OF UHV EQUIPMENT: #22631-S-001
 CLEANING & HANDLING OF UHV COMPONENTS: #22632-S-001

DIM & TOL PER ASME Y14.5 2009. UNLESS OTHERWISE SPECIFIED DIMENSIONS ARE IN INCHES TOLERANCES ARE: <table border="1"> <thead> <tr> <th>FRACTIONS</th> <th>DECIMAL</th> <th>ANGLES</th> </tr> </thead> <tbody> <tr> <td>±1/8</td> <td>.X ±.1</td> <td>±.50°</td> </tr> <tr> <td></td> <td>.XX ±.01</td> <td></td> </tr> <tr> <td></td> <td>.XXX ±.005</td> <td></td> </tr> </tbody> </table>	FRACTIONS	DECIMAL	ANGLES	±1/8	.X ±.1	±.50°		.XX ±.01			.XXX ±.005		MATERIAL MACOR .125 THK	United States Department of Energy  Thomas Jefferson National Accelerator Facility Newport News Virginia
	FRACTIONS	DECIMAL	ANGLES											
±1/8	.X ±.1	±.50°												
	.XX ±.01													
	.XXX ±.005													
THIRD ANGLE PROJECTION 	FINISH MACHINED SURFACES UNLESS OTHERWISE NOTED  63 DEBURR & BREAK ALL SHARP EDGES	ACC INJECTOR LOAD LOCK GUN 2 DEG ANODE MACOR SPACER												
DO NOT SCALE DRAWING DRAWN S.A. GREGORY DATE 21MAR22	SIZE DWG. NO. B JL0119495-0032 SCALE 1:1 USED ON ASSY NO. JL0119495-0030	REV. - SHEET 1 OF 1												