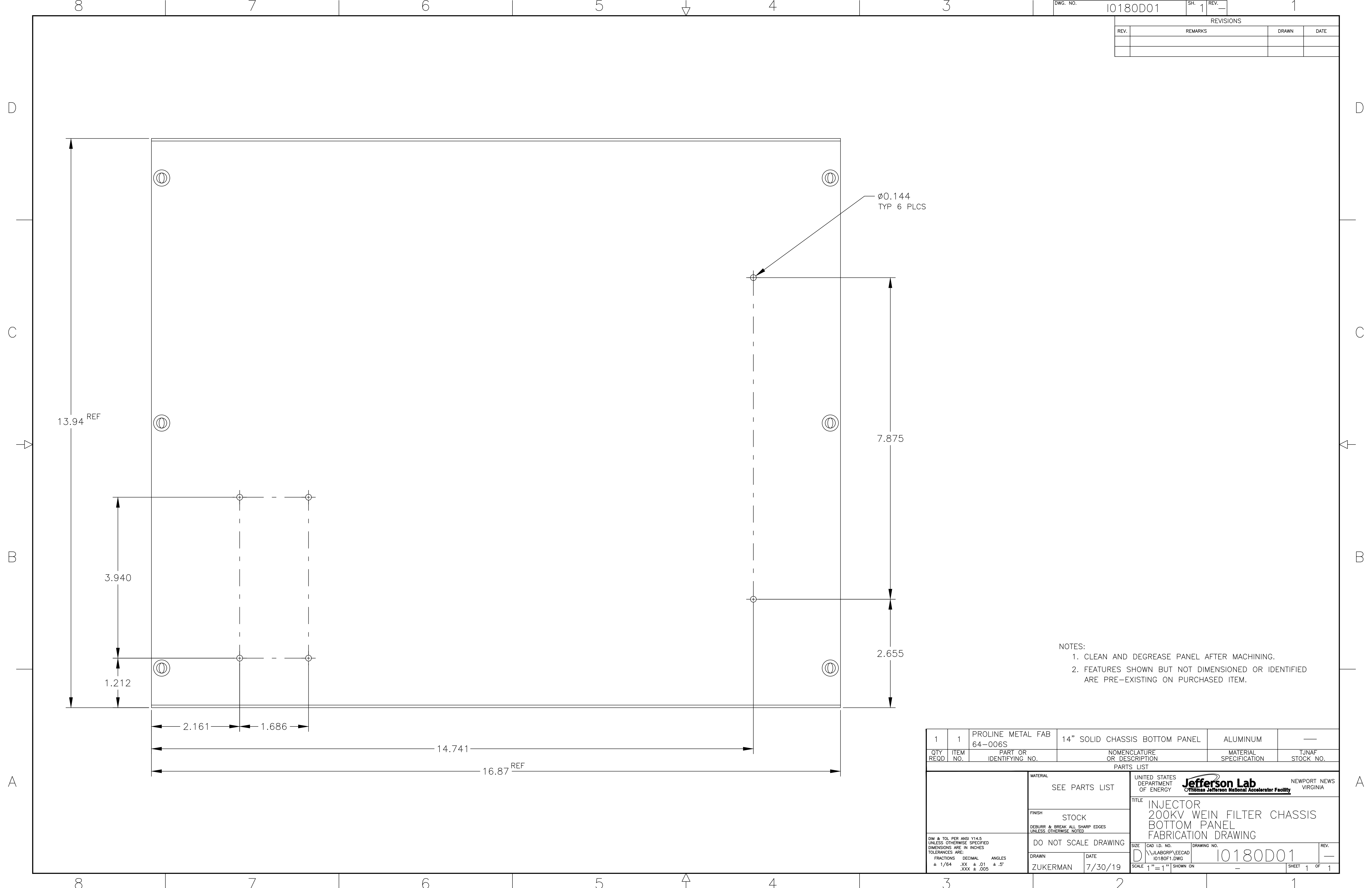


REVISIONS			
REV.	REMARKS	DRAWN	DATE



∅0.144  
TYP 6 PLCS

- NOTES:
- CLEAN AND DEGREASE PANEL AFTER MACHINING.
  - FEATURES SHOWN BUT NOT DIMENSIONED OR IDENTIFIED ARE PRE-EXISTING ON PURCHASED ITEM.

1	1	PROLINE METAL FAB 64-006S	14" SOLID CHASSIS BOTTOM PANEL	ALUMINUM	—
QTY REQD.	ITEM NO.	PART OR IDENTIFYING NO.	NOMENCLATURE OR DESCRIPTION	MATERIAL SPECIFICATION	TJNAF STOCK NO.
PARTS LIST					
MATERIAL		UNITED STATES DEPARTMENT OF ENERGY <b>Jefferson Lab</b> NEWPORT NEWS VIRGINIA <i>Thomas Jefferson National Accelerator Facility</i>			
SEE PARTS LIST		TITLE INJECTOR 200KV WEIN FILTER CHASSIS BOTTOM PANEL FABRICATION DRAWING			
FINISH		DO NOT SCALE DRAWING			
STOCK		DRAWN		DATE	
DEBURR & BRCAK ALL SHARP EDGES UNLESS OTHERWISE NOTED		ZUKERMAN		7/30/19	
DIM & TOL PER ANSI Y14.5 UNLESS OTHERWISE SPECIFIED DIMENSIONS ARE IN INCHES TOLERANCES ARE:		SIZE		CAD I.D. NO.	
FRACTIONS DECIMAL ANGLES		D		DRAWING NO.	
± 1/64 .XX ± .01 ± .5° .XXX ± .005		SCALE 1"=1" SHOWN ON		I0180D01	
SCALE 1"=1" SHOWN ON				REV. —	
SHEET 1 OF 1				1	