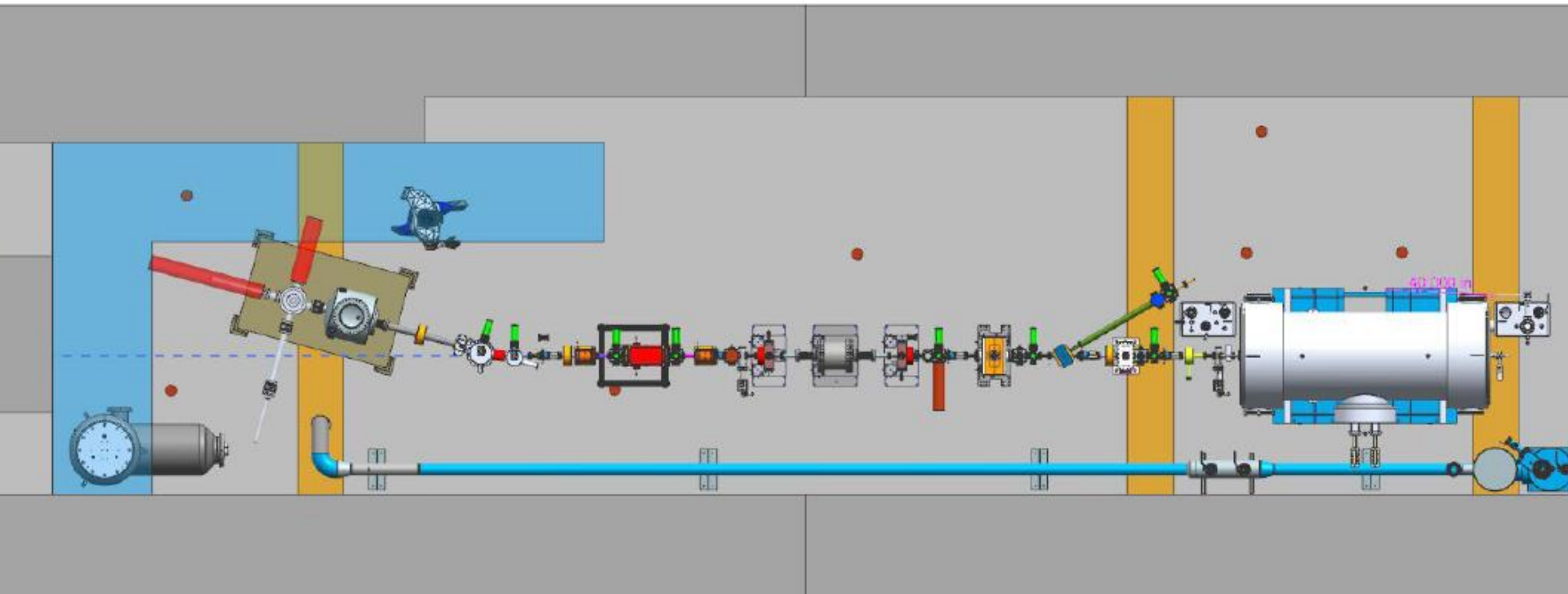
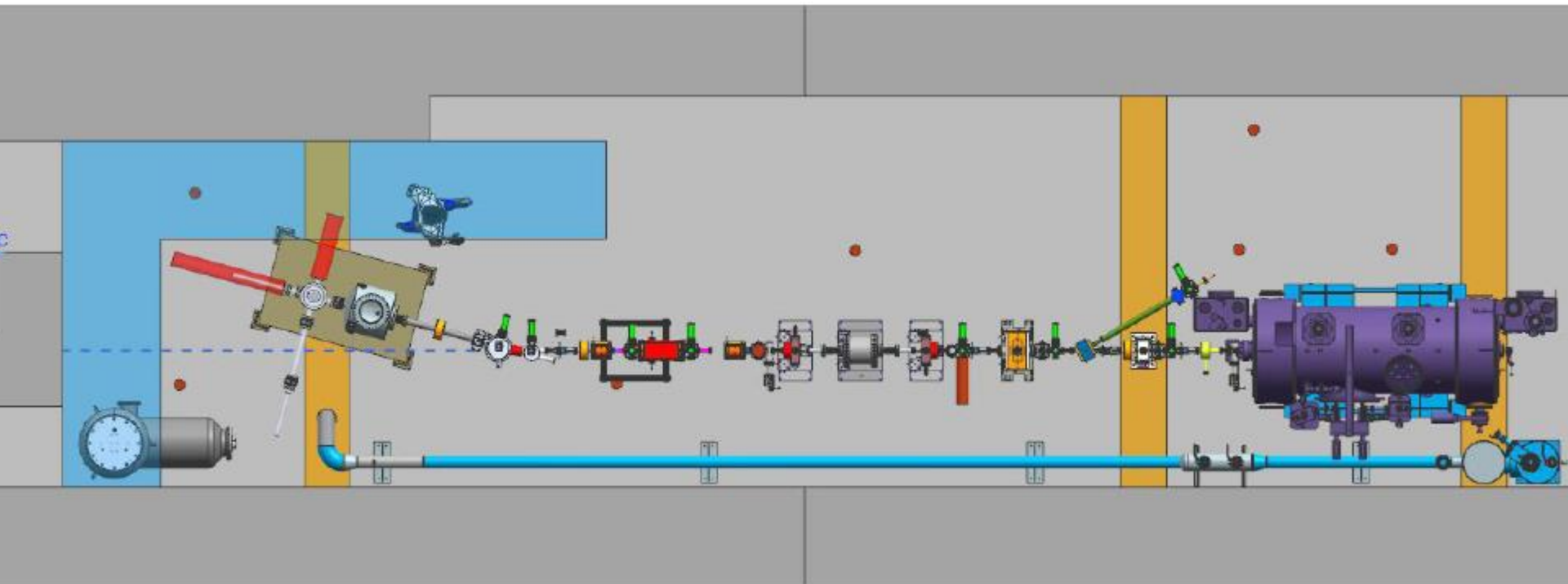


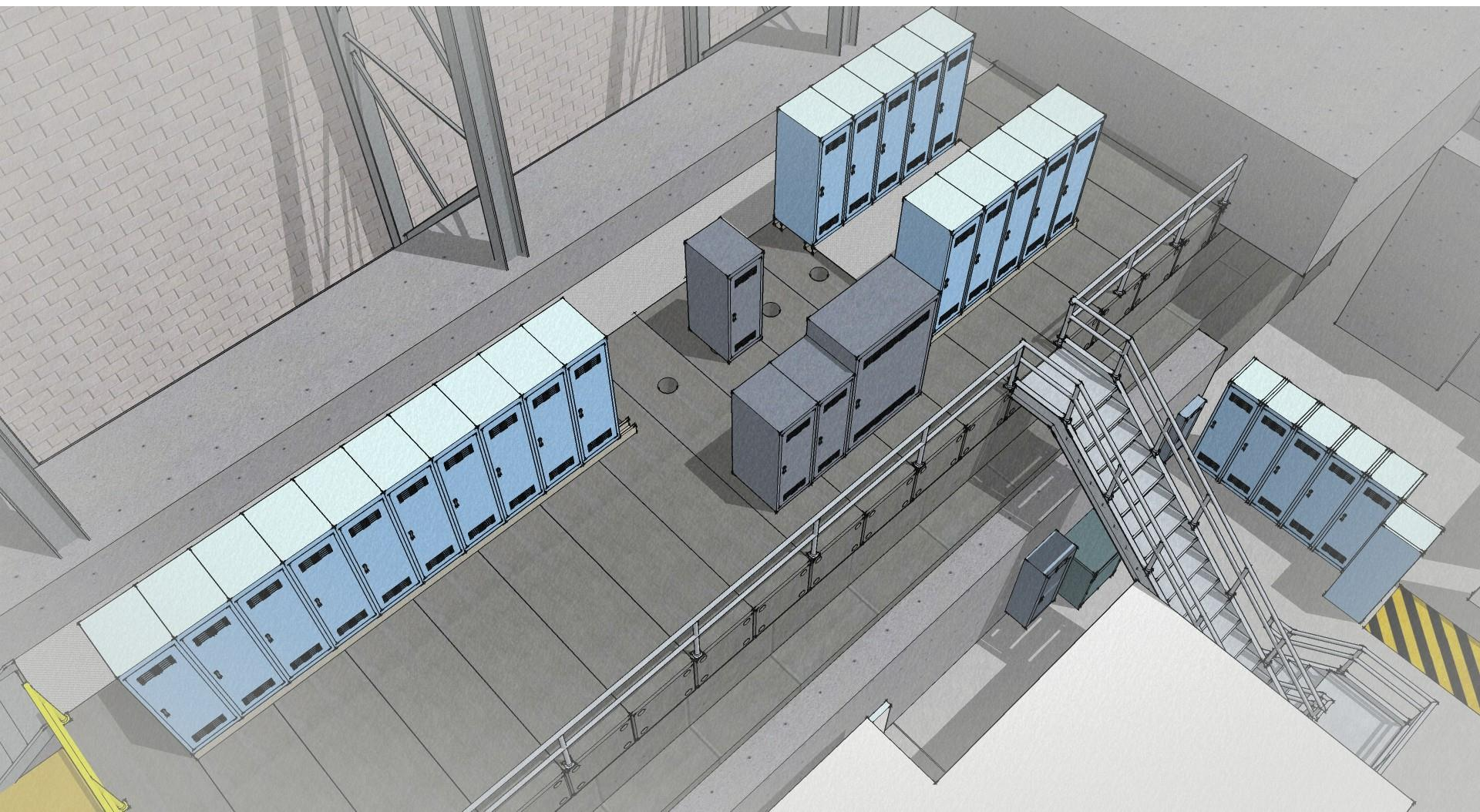
Today's layout, ready to cut metal.....



Cryo lines hug the wall, waveguides on same side as cryo lines
Heat exchanger added to the mix, Rao says this will make things more efficient and stable

Cryo lines compatible with old and new ¼ CM.....





OK to....

- 1) Prepare cryolines
- 2) Order the 80/20 support structure for keV beamline
- 3) Spend money on trim cards
- 4) Spend money on stripline BPMs
- 5) Layout racks above the cave, rework the LCW lines when wall gone
- 6) Spend money on the HPA controls, klystron racks
- 7) Spend money on LLRF control boards
- 8) Order 12 QJ-panofsy quads