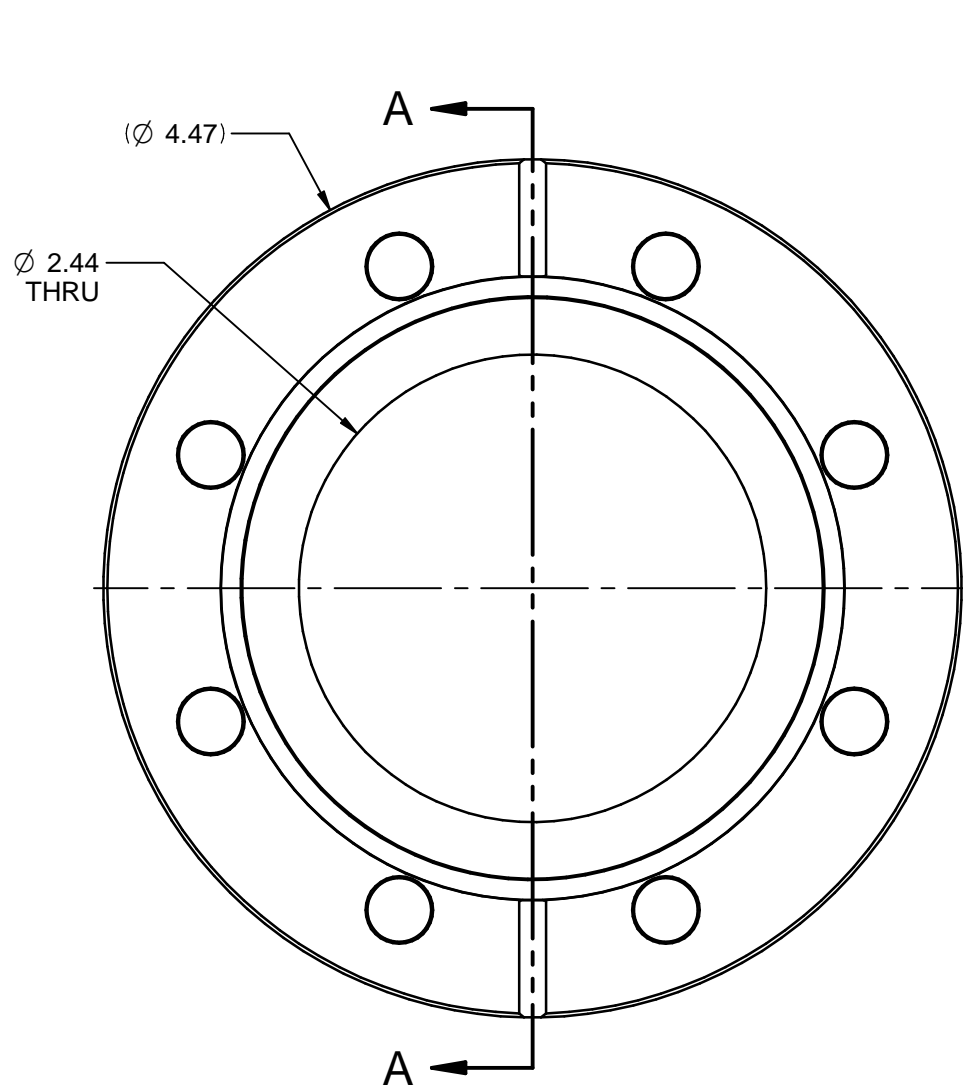
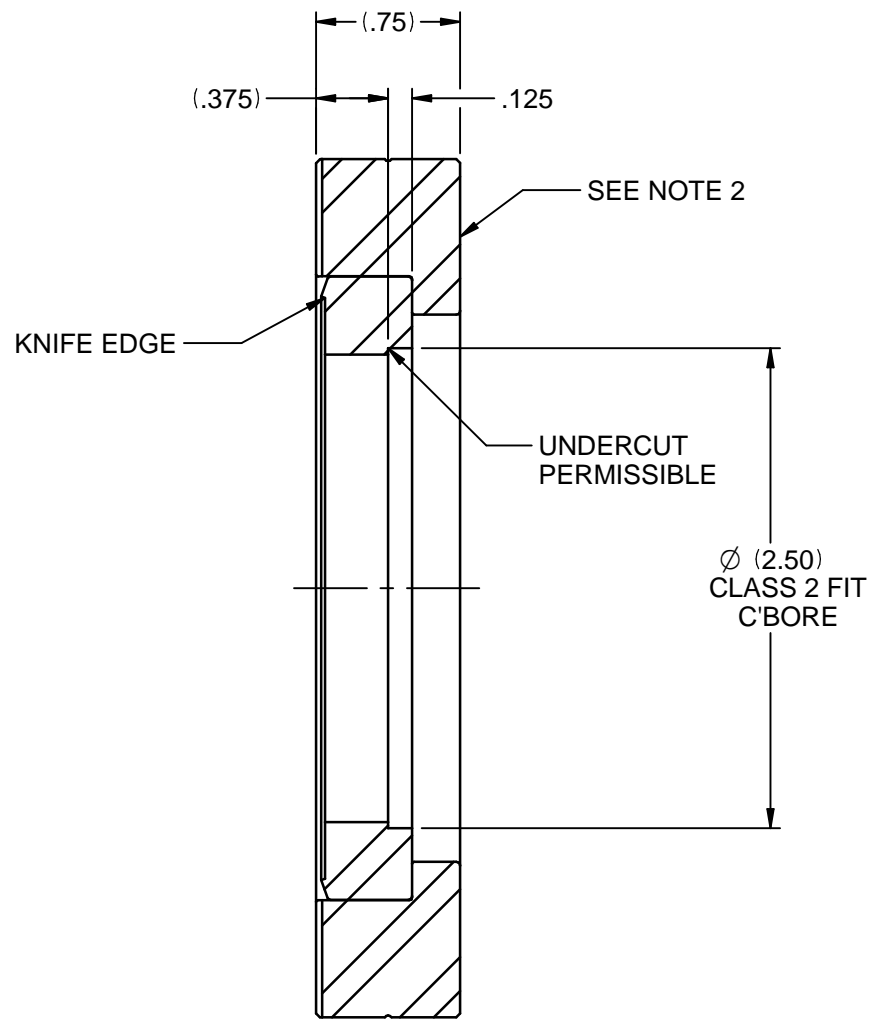


BILL OF MATERIALS

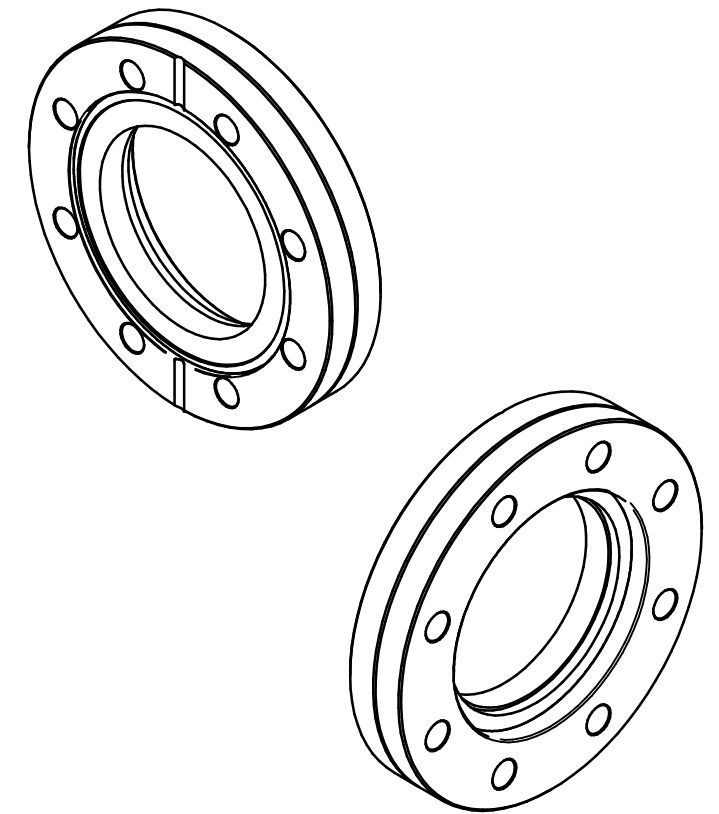
NO.	PART NUMBER	DRAWING NUMBER	DESCRIPTION	QTY	U/M
01	F0450X200R	A0000627	FLANGE,UHV,SS,BORED,ROT,4.50" OD,2"C-BORE	1	EA



VACUUM SIDE



SECTION A-A



NOTES:

1. ALL DIMENSIONS ARE IN INCHES, REFER TO TABLE 1 FOR STANDARD TOLERANCING INFORMATION.
2. REMOVE OUTER RING PRIOR TO MACHINING.

SYMBOL LEGEND				DETAIL LEVEL: N/A				CLEANING PROCEDURE: AS REQ'D FOR WELDING			
△	REVISION	UNLESS OTHERWISE SPECIFIED MACHINE FINISHES SHALL BE:				UNLESS OTHERWISE SPECIFIED ALL OTHER SURFACE FINISHES SHALL BE:					
○	ITEM BALLOON	63 Ra				AS SUPPLIED					
⊗	FOCAL POINT	UNLESS OTHERWISE SPECIFIED REFER TO DOCUMENT STM-1201, KJLC STANDARD TOLERANCES AND MANUFACTURING PRACTICES									
□	FOCAL POINT DESIGNATOR	MACHINED TOLERANCES (UNLESS OTHERWISE NOTED)				FABRICATION / WELDMENT TOLERANCES (UNLESS OTHERWISE NOTED)					
⬠	INSPECTION BALLOON	TABLE 1 DIMENSIONS ARE IN INCHES X in [X mm]									
◇	WATER TRACE IDENTIFICATION	RANGE	1PL .X	2PL .XX	3PL .XXX	RANGE	1PL .X	2PL .XX			
⬠	CENTER OF GRAVITY IDENTIFICATION	> 0 - 10	± .03	± .01	± .005	0 - 12	± .03	± .02			
		> 10 - 20	± .06	± .02	± .010	> 12 - 24	± .06	± .03			
		> 20 - 72	± .12	± .03	± .015	> 24 - 72	± .12	± .06			
		> 72	± .25	± .06	± .030	> 72	± .25	± .13			
		ANGULAR	± 30'			ANGULAR	± 30'				
		TABLE 2 DIMENSIONS ARE IN MILLIMETERS X mm [X in]									
		RANGE	X	X, X	X, XX	RANGE	X	X, X			
		0 - 250	± 0.5	± 0.2	± 0.12	0 - 300	± 0.8	± 0.50			
		> 250 - 500	± 1.0	± 0.5	± 0.25	> 300 - 600	± 1.5	± 0.75			
		> 500 - 1800	± 1.5	± 0.75	± 0.40	> 600 - 1800	± 3.0	± 1.50			
		> 1800	± 2.0	± 1.5	± 0.75	> 1800	± 6.0	± 3.00			
		ANGULAR	± 30'			ANGULAR	± 30'				
		Q.C. BY USING 1 : 1 DRAWING: No				DRAWING BASED ON: -					

NO.	ZONE	ECN #	REVISION DESCRIPTION	DATE	BY	CHK
A	ALL	-----	RELEASED FOR MANUFACTURING	5/12/2014	SHP	DEC

1925 Route 51 Jefferson Hills, PA 15025-3681 phone: 1-800-245-1656 web: www.lesker.com	© Kurt J. Lesker Company "...vacuum science is our business"	15/16 Burgess Road Hastings, East Sussex, TN35 4NR United Kingdom phone: +44 01424 458100
--	--	--

NOTE: THIS DRAWING, AND ITS CONTENT, IS THE CONFIDENTIAL AND PROPRIETARY INFORMATION OF KURT J. LESKER COMPANY AND CAN NOT BE DISCLOSED OR USED EXCEPT WITH THE EXPRESS WRITTEN PERMISSION OF KURT J. LESKER COMPANY.

SCALE: 1/1	APPROVED BY: ENR DATE: 5/9/2014	CHECKED BY: DEC DATE: 5/9/2014	DRAWN BY: SHP DATE: 5/7/2014
------------	------------------------------------	-----------------------------------	---------------------------------

TITLE: MODIFIED F0450X200R FOR BJ1817C00039

SIZE: MATERIAL SPECIFICATION: B AS NOTED	DRAWING NO.: PRD118573-05S005	REV: A
--	-------------------------------	--------

KJLC PART NUMBER: -	APPROX. WEIGHT: 2.1 lbs	SHEET: 1 OF 1
---------------------	-------------------------	---------------

CAD FILE LOCATION: ENG_FILES_R\PROJECTS...