



ELSEVIER

Available online at www.sciencedirect.com

SCIENCE @ DIRECT®

Nuclear Instruments and Methods in Physics Research A 521 (2004) 261–298

**NUCLEAR
INSTRUMENTS
& METHODS
IN PHYSICS
RESEARCH**
Section A

www.elsevier.com/locate/nima

SLAC's polarized electron source laser system and minimization of electron beam helicity correlations for the E-158 parity violation experiment

T.B. Humensky^{a,*}, R. Alley^b, A. Brachmann^c, M.J. Browne^c, G.D. Cates^d,
J. Clendenin^c, J. deLamare^c, J. Frisch^c, T. Galetto^c, E.W. Hughes^e, K.S. Kumar^f,
P. Mastromarino^c, J. Sodja^c, P.A. Souder^g, J. Turner^c, M. Woods^c

^a Princeton University, Princeton, NJ, USA

^b Illumina, Inc., San Diego, CA, USA

^c Stanford Linear Accelerator Center, Menlo Park, CA, USA

^d University of Virginia, Charlottesville, VA, USA

^e California Institute of Technology, Pasadena, CA, USA

^f University of Massachusetts, Amherst, MA, USA

^g Syracuse University, Syracuse, NY, USA

Received 6 September 2002; received in revised form 29 August 2003; accepted 30 September 2003

Abstract

SLAC E-158 is an experiment designed to make the first measurement of parity violation in Møller scattering. E-158 will measure the right-left cross-section asymmetry, $A_{LR}^{\text{Møller}}$, in the elastic scattering of a 45-GeV polarized electron beam from unpolarized electrons in a liquid hydrogen target. E-158 plans to measure the expected Standard Model asymmetry of $\sim 10^{-7}$ to an accuracy of better than 10^{-8} . To make this measurement, the photoemission-based polarized electron source requires an intense circularly polarized laser beam and the ability to quickly switch between right- and left-helicity polarization states with minimal right-left helicity-correlated asymmetries in the resulting beam parameters (intensity, position, angle, spot size, and energy), $^{\text{beam}}A_{LR}$'s. This laser beam is produced by a unique SLAC-designed flashlamp-pumped Ti:Sapphire laser and is directed through a carefully designed set of polarization optics. We analyze the transport of nearly circularly polarized light through the optical system and identify several mechanisms that generate $^{\text{beam}}A_{LR}$'s. We show that the dominant effects depend linearly on particular polarization phase shifts in the optical system. We present the laser system design and a discussion of the suppression and control of $^{\text{beam}}A_{LR}$'s. We also present results on beam performance from engineering and physics runs for E-158.

© 2003 Elsevier B.V. All rights reserved.

PACS: 29.25.Bx; 29.27.Hj; 42.25.Ja

Keywords: Helicity-correlated asymmetry; Møller scattering; Parity violation; Polarized electrons; Ti:Sapphire laser; Standard model

*Corresponding author. LASR 205, Enrico Fermi Institute, 5641 S. Ingleside Ave., Chicago, IL 60637, USA. Tel.: +1-773-702-7863; fax: +1-773-702-6645.

E-mail address: humensky@uchicago.edu (T.B. Humensky).

Nomenclature			
A_E	helicity-correlated energy asymmetry	GPM	gallons per minute
A_I	helicity-correlated intensity asymmetry	HBS	holographic beam sampler
A_{LR}^{ee}	Møller-scattering physics asymmetry	HF	helicity filter
beam A_{LR}	helicity-correlated asymmetry in a property of the beam (position, angle, intensity, energy, spot size, etc.)	IA	intensity asymmetry feedback loop
beam \tilde{A}_{LR}	contribution to the measured detector asymmetry arising from helicity-correlated beam asymmetries	ID	inner diameter
BPM	beam position monitor	NLC	Next Linear Collider
CP cell	Circular Polarization Pockels cell	OD	outer diameter
D_X	helicity-correlated position difference in x or y	PD	photodiode
D'_X	helicity-correlated angle difference in x' or y'	PITA	polarization-induced transport asymmetry
DAQ	data acquisition	PL	polarizer
Flash:Ti	flashlamp-pumped Ti:Sapphire laser	POS	position difference feedback loop
FWHM	full-width half maximum	PEP	Positron Electron Project
		PMON	Polarization MONitor
		PS cell	Phase Shift Pockels cell
		QE	quantum efficiency
		rms	root-mean square
		SCP	SLAC Control Program
		SLAC	Stanford Linear Accelerator Center
		TOPS	TOP-Hat Pulse Shaper
		YLF:Ti	Nd:YLF-pumped Ti:Sapphire laser

1. Introduction

The Stanford Linear Accelerator Center (SLAC) has a distinguished history of providing polarized electron beams for use in high energy physics experiments, including important tests of the Standard Model of particle physics and detailed studies of the spin structure of nucleons [1–3]. SLAC's polarized electron source is based on photoemission from a strained GaAs cathode pumped by an intense, circularly polarized laser beam [4,5]. Two laser systems exist to pump the cathode: a Nd:YLF-pumped Ti:Sapphire laser (the “YLF:Ti”) that generates short (2-ns) pulses of electrons for SLAC's Positron Electron Project (PEP) rings, and a flashlamp-pumped Ti:Sapphire laser (the “Flash:Ti”) used to generate 270-ns pulses for use in fixed target experiments at SLAC's “End Station A” such as E-158, described briefly below.

E-158 will make the first measurement of parity violation in Møller scattering by measuring the asymmetry in the cross section for elastic scatter-

ing of longitudinally polarized electrons with an energy of 45 GeV from an unpolarized electron target:

$$A_{LR}^{\text{Møller}} = \frac{\sigma_R - \sigma_L}{\sigma_R + \sigma_L}, \quad (1)$$

where σ_R (σ_L) is the cross section for incident right- (left-) helicity electrons [6,7]. The experiment will make a stringent test of the Standard Model of particle physics and will also be sensitive to new physics beyond the Standard Model [8]. The asymmetry will be measured to an accuracy of better than 10^{-8} , with the expected Standard Model asymmetry being approximately 10^{-7} .

One critical challenge for E-158 is the suppression of helicity-correlated asymmetries in the parameters of the electron beam when it is incident on the liquid hydrogen target. Helicity-correlated asymmetries in the electron beam must be held to very small levels to prevent them from contributing false asymmetries to the measurement at a significant level. For instance, because typical fixed-target scattering cross sections are

proportional to $\sin^{-4}\theta$ and the detector accepts electrons with scattering angles of $0.27\text{--}0.41^\circ$, the scattered flux reaching the detector is strongly dependent on the position and angle of the beam at the target. If, for example, over the length of the experiment the average beam position on target for right- and left-helicity pulses is different, a false asymmetry will be measured that is proportional to the magnitude of that difference. The Møller physics asymmetry in Eq. (1) can be expressed in terms of measured detector and beam quantities. Consider first a single pair of pulses corresponding to right- and left-helicity beam incident on the E-158 target. For the case of small right-left differences (and neglecting background contributions), the asymmetry for a single pair A_{LR}^P can be written as

$$\begin{aligned} A_{LR}^P &= P_B A_{LR}^{\text{Møller}} \\ &= \frac{\Delta D}{2D} - \frac{\Delta I}{2I} + \alpha_E \frac{\Delta E}{2E} + \sum_i \alpha_i \Delta X_i \\ &= \frac{\Delta D}{2D} - {}^{\text{beam}}\tilde{A}_{LR}, \end{aligned} \quad (2)$$

where P_B is the beam polarization, $D \propto \sigma$ is the average detected scattered flux for right- and left-helicity pulses, I is the beam intensity, E is the beam energy, the X_i run over position and angle in x and y , and α_E and the α_i are correlation coefficients between energy, position, and angle and the detector signal. These coefficients are measured simultaneously with data-taking. A refers to the right-left difference in each of the above parameters. The symbol ${}^{\text{beam}}\tilde{A}_{LR}$ refers to the contribution to the measured detector asymmetry arising from helicity-correlated beam asymmetries. We frequently use the acronym “ ${}^{\text{beam}}A_{LR}$ ” to refer to a helicity-correlated asymmetry (or difference) in the intensity, energy, position, angle, or other parameters of the electron beam. E-158 will accumulate many right-left pairs ($\sim 3 \times 10^8$) over the length of the physics run. Taking into account the detector’s nonlinearity (projected to be 0.5%) and estimates of the sensitivity of the scattering cross section to energy, position, and angle (determined by measuring α_E and the α_i), we estimate that the intensity asymmetry A_I , the energy asymmetry A_E , and the position and angle

differences $D_{X(Y)}$ and $D_{X'(Y')}$ must be held below the following limits:

$$\begin{aligned} A_I &= \left\langle \frac{I_R - I_L}{I_R + I_L} \right\rangle < 2 \times 10^{-7}, \\ A_E &= \left\langle \frac{E_R - E_L}{E_R + E_L} \right\rangle < 2 \times 10^{-8}, \end{aligned} \quad (3)$$

$$\begin{aligned} D_X &= \langle x_R - x_L \rangle < 10 \text{ nm}, \\ D_{X'} &= \langle x'_R - x'_L \rangle < 0.4 \text{ nrad}, \end{aligned}$$

where the angle brackets denote averaging over all pairs. Achieving these limits will keep contributions to the systematic error on $A_{LR}^{\text{Møller}}$ at the level of 1 ppb or less from each ${}^{\text{beam}}A_{LR}$ and keep the cumulative systematic error contribution from all ${}^{\text{beam}}A_{LR}$ ’s at the level of 3 ppb, a level comfortably below the projected statistical error of 8 ppb. The derivation of these limits is discussed in more detail in [6,9]. A major focus of the work presented in this paper is the implementation of a number of methods for controlling ${}^{\text{beam}}A_{LR}$ ’s at a level that will allow achieving the requirements of Eqs. (3).

In this paper we describe the Flash:Ti laser and the accompanying optics system for the polarized electron source. The Flash:Ti system was originally designed and commissioned in 1993 [4,10] and has seen extensive upgrades in preparation for E-158. Table 1 summarizes the parameters of the Flash:Ti laser beam for E-158. Likewise, the polarization and transport optics have also seen

Table 1

Parameters of the Flash:Ti laser beam as it ran for E-158 Physics Run I. The position jitter at the photocathode is measured on the electron beam but is dominated by laser jitter. The other entries are measured directly on the laser beam

Wavelength	805 nm ^a
Bandwidth	0.7 nm FWHM
Repetition rate	120 Hz
Pulse length	270 ns ^b
Pulse energy	60 μJ ^c
Circular polarization	99.8%
Energy jitter	0.5% rms
Position jitter at photocathode	< 70 μm rms ^d

^aTunable over 750–850 nm.

^bTunable over 50–370 ns.

^cTypical operating energy. The maximum available energy is 600 μJ in a 370-ns pulse.

^dFor 1 cm $1/e^2$ diameter.

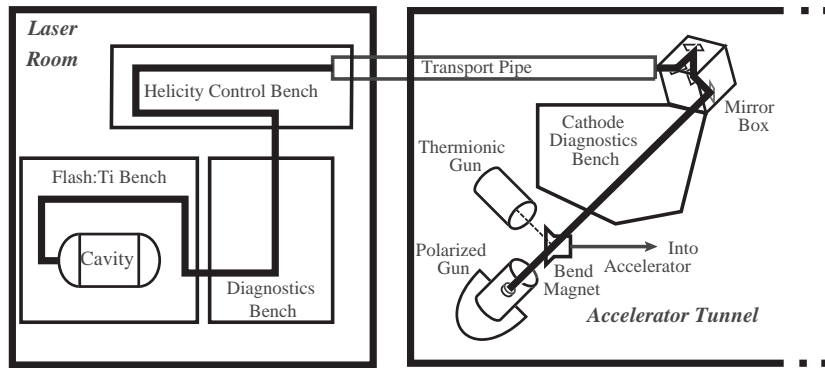


Fig. 1. An overview of the Polarized Electron Source as it is configured for E-158.

significant upgrades. The focus of these upgrades has been to improve the suppression and control of $^{beam}A_{LR}$'s. An overview of the polarized source laser and optics systems as they are configured for E-158 is illustrated in Fig. 1. The laser and optics systems are housed in an environmentally controlled room outside of the accelerator tunnel. The “Flash:Ti Bench” holds the laser cavity and pulse-shaping optics. The “Diagnostics Bench” has photodiodes for monitoring the laser’s intensity and temporal profile and a monochromator for measuring its wavelength. The “Helicity Control Bench” houses the optics for controlling the polarization state of the beam and for suppressing $^{beam}A_{LR}$'s. The laser light is delivered through a 20-m transport pipe to the accelerator tunnel where it crosses the “Cathode Diagnostics Bench” and is directed onto the cathode of the polarized gun. The “Cathode Diagnostics Bench” holds optics for setting the position and size of the beam spot on the cathode and an auxiliary diagnostic line. The photoelectrons emitted by the cathode are bent through 38° and enter the accelerator.

The heart of the polarized electron source is its photocathode. A new gradient-doped strained GaAsP cathode was installed prior to E-158’s 2002 physics running. This cathode, which is more fully described in Ref. [11], was developed for the Next Linear Collider (NLC) project [12]. NLC requires roughly 2.5 times more charge than E-158 in a 270-ns pulse and $> \sim 80\%$ electron polarization [5]. With the available laser power, this cathode can yield a charge of 2×10^{12} electrons in 100 ns. This is significantly more charge than is

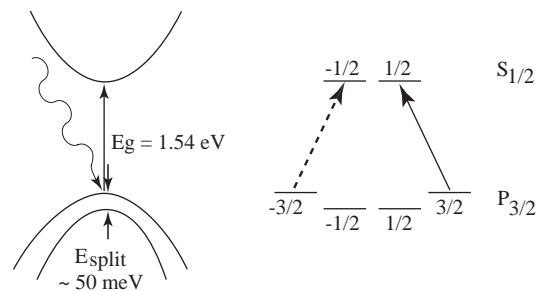


Fig. 2. A diagram of the bandgap and energy levels for strained GaAsP. The arrows indicate the allowed transitions for right- and left-helicity photons of $\lambda = 805$ nm. Adapted from Ref. [16].

required by E-158 (and significantly more than yielded by the previous cathode), providing additional flexibility in optimizing the optics system. In order to provide an electron beam polarization as high as $\sim 80\%$, a strain is applied to the active layer of the cathode to break the degeneracy of the $P_{3/2}$ energy levels as illustrated in Fig. 2. However, the amount of strain varies in direction with respect to the crystalline lattice. This variation induces a “QE anisotropy” in the cathode, whereby the quantum efficiency (QE) of the cathode becomes dependent on the orientation of the linear polarization of incident laser light, with a typical analyzing power of 5–15% [13]. The QE anisotropy is a dominant ingredient contributing to $^{beam}A_{LR}$'s and its effects are discussed in Section 4.

The relationship between the helicity of the laser beam and the helicity of the resulting polarized electron beam can be determined by considering the bandgap diagram for GaAsP, shown in Fig. 2.

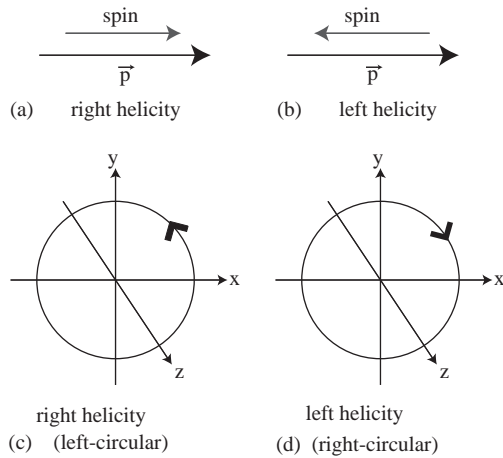


Fig. 3. Conventions used for electron beam helicity and laser beam polarization. (a) and (b) define right- (left-) helicity photon and electron beams as having the particle spin aligned (antialigned) with the particle momentum. (c) and (d) show the commonly used optics convention. The arrows on the polarization ellipses indicate increasing time.

The laser light pumps electrons from the $P_{3/2}$ valence band into the $S_{1/2}$ conduction band. Right-helicity laser light excites electrons into the $m_J = -\frac{1}{2}$ state in the conduction band. Because we operate the cathode in reflection mode (the emitted electrons move in the direction opposite of the incoming laser light), the extracted electrons are also right-helicity. Similarly, left-helicity laser light excites electrons into the $m_J = +\frac{1}{2}$ state, and in reflection yields left-helicity electrons. In this paper we define the handedness of the photon and electron beams according to their helicity [14] as shown in Fig. 3.¹

The operating wavelength and required bandwidth of the Flash:Ti are determined by the photoemission properties of the cathode. Fig. 4 shows, as a function of wavelength, the cathode QE and the polarization of the photoemitted electrons for the cathode used during E-158 Physics Run I. As shown in Table 1, we have chosen an operating wavelength of 805 nm to obtain maximum polarization, and the Flash:Ti's 0.7 nm FWHM bandwidth is narrow enough to

¹This convention results in right- (left-) helicity photons corresponding to left- (right-) circular polarization photons in the commonly used optics convention given in Ref. [15].

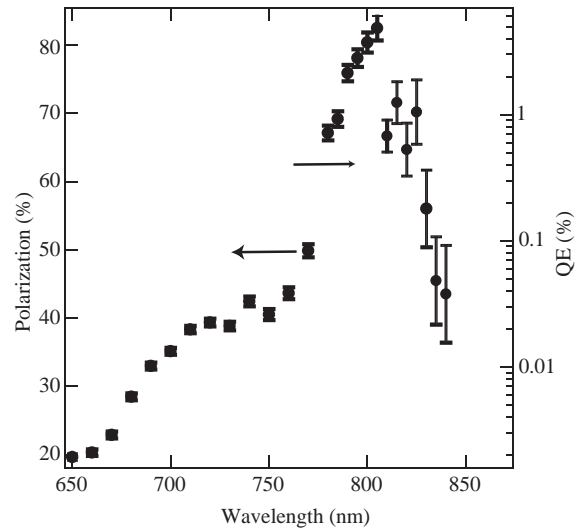


Fig. 4. Electron polarization and cathode QE as a function of wavelength. This data is from a different sample of the same GaAsP wafer as the cathode installed prior to E-158 physics running. Reprinted from Ref. [11].

ensure that all of the laser power is used to generate electrons at the peak polarization.

A particular focus of this paper is on the parts of the optical system that are responsible for producing a circularly polarized laser beam and for suppressing and controlling $^{beam}A_{LR}$'s. Beam asymmetries originate in the source optics and in the laser beam's interaction with the cathode. Asymmetries arise most importantly from imperfections in the laser beam's circular polarization but also appear to arise from helicity-correlated beam-steering effects associated with the polarization optics. In order to achieve a high degree of circular polarization, we use a linear polarizer and a pair of Pockels cells on the Helicity Control Bench. These elements provide control over the laser-beam polarization and provide the ability to switch between helicity states on a pulse-by-pulse basis. To achieve further suppression of $^{beam}A_{LR}$'s, a number of features are built into the optical system. These features include

- (i) optimization of the beam spot size and waist location at the polarization Pockels cells;
- (ii) imaging of the polarization Pockels cells onto the photocathode;

- (iii) active feedbacks to null A_I , $D_{X(Y)}$, and $D_{X'(Y')}$;
- (iv) an insertable half-wave plate as a second, slow means to reverse the laser helicity; and
- (v) the ability to toggle between two beam expanders which provide a magnification of equal magnitude and opposite sign to reverse certain contributions to $D_{X(Y)}$ and $D_{X'(Y')}$.

In addition to passive optimization of the system, active feedbacks are useful for several reasons. First, drifts in A_I are observed at the 100-ppm level. Second, it is impossible to passively set up the system to null $^{beam}A_{LR}$'s with the required precision for lack of statistics during the setup period, so the active feedbacks provide a means of ensuring convergence to zero. Finally, for A_I it is important to take advantage of the ability of an active feedback to suppress the mean value of the quantity being fed back on faster than one would expect from counting statistics (“ $1/N$ scaling”).

This paper includes performance results for the laser and optics system from three runs: T-437, a test-beam run in November 2000 which commissioned the polarized source for E-158; an E-158 engineering run in January-May 2001; and E-158 Physics Run I in April-May 2002. Table 2 summarizes changes in key parameters of the laser beam between runs. The wavelength was changed prior to Physics Run I to accommodate the new cathode. In addition, a few results are presented from the Gun Test Laboratory, a test facility which reproduces the first few meters of the beam line.

Sections 2 and 3 of this paper discuss the design and implementation of the Flash:Ti laser system and the accompanying optics system, progressing in sequence from the laser cavity to the photocathode. Section 4 discusses how $^{beam}A_{LR}$'s can arise and notes their relevance to the SLAC source

Table 2

Summary of changes in key operating parameters of the Flash:Ti laser between E-158-related runs

Run	Laser Rate (Hz)	Wavelength (nm)	Energy jitter (%)
T-437	60	852	1.0
2001 Engineering	60	852	1.5
Physics Run I	120	805	0.5

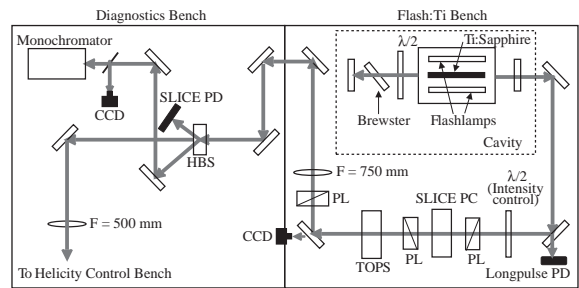


Fig. 5. Schematic of the laser cavity and the optical layout of the Flash:Ti and Diagnostics Benches ($\lambda/2$: half-wave plate, PD: photodiode, PL: polarizer, PC: Pockels cell, HBS: holographic beam sampler).

and E-158. Section 5 discusses how the laser polarization and transport optical systems are configured and optimized to suppress $^{beam}A_{LR}$'s and presents results from T-437.

2. The Flash:Ti laser system

This section discusses the design and operation of the Flash:Ti laser cavity, the Flash:Ti cooling flow system, the Flash:Ti modulator, the pulse shaping and intensity control optics, and the laser beam diagnostics. The Flash:Ti laser was largely designed and built at SLAC and is unique for its low jitter, long pulse length, and high repetition rate capability. Performance results from the recent E-158 engineering and physics runs are presented.

2.1. Flash:Ti laser cavity

The Flash:Ti pump chamber was designed at SLAC and constructed for us by Big Sky Laser Technologies.² A schematic of the laser cavity is depicted in Fig. 5. The rod-shaped Ti:Sapphire crystal is pumped by two flashlamps, each of which is associated with an elliptically shaped reflector. The original commercial silver coatings of the reflectors and pump chamber end plates have been replaced by rhodium. This change substantially increased their mechanical and chemical surface durability and eliminated the need to

²Big Sky Laser Technologies, Bozeman, MT, USA.

purge the pump chamber with nitrogen during flashlamp changes or other maintenance work. The pump chamber parts can be exposed to air while they are handled without the risk of corrosion. Two cylindrical flashlamps³ are used for this system. The flashlamp tubes have the following specifications: ID 4.8 mm, OD 5.98 mm, 7.6-in. arc length, Ce-doped quartz walls, and 450 Torr Xe filling. The output of the flashlamps is focused on the center of a 4-mm diameter 0.1%-doped Ti:Sapphire laser rod⁴ of 6.4-in. length. The rod, flashlamps, and pump chamber are cooled by a closed loop of ultra-pure water. The rod flow tube⁵ surrounds the laser rod and its material acts as a UV filter to prevent excessive solarization of the Ti:Sapphire material.

We achieve maximum laser cavity output power while maintaining low pulse-to-pulse jitter by using a one-meter-long cavity formed by an 85%-reflectivity planar output coupler and a 99.9%-reflectivity end mirror with a 2-m concave curvature. Both mirrors have narrow-band dielectric coatings centered at the operating wavelength (800 nm or 850 nm). A single quartz quarter-wave plate of ~ 1.3 mm thickness acts as both a Brewster plate and a birefringent tuner. It is mounted to allow for both horizontal rotation and rotation about the axis normal to its surface. In the horizontal plane the plate is set to the Brewster angle of $\sim 57^\circ$. The effective refractive index of the quartz plate depends on the angle between the electric field vector and the optical orientation of the quartz plate. We achieve birefringent wavelength tuning by rotating the quartz plate about the axis normal to its surface. This optimizes the transmission for the desired output wavelength of 805 nm (852 nm for T-437 and the 2001 Engineering Run) with a bandwidth of ~ 0.7 nm (FWHM). A half-wave plate located between the laser head and the Brewster plate compensates for the arbitrary orientation of the Ti:Sapphire laser rod and thereby guarantees that p-polarization trans-

mission is maximized through the Brewster plate. Recent modifications of the laser head assembly procedure allow installation of the laser rod with control of its crystallographic orientation. This eliminates the need for the half-wave plate inside the cavity and further improves the performance of the cavity stability. Preliminary measurements in SLAC's laser development laboratory indicate a pulse-to-pulse jitter of $\sim 0.3\%$ rms. The equivalent modification of the laser head used at the polarized electron source is planned for the next E-158 physics run.

2.1.1. Thermal lensing

Pumping the Ti:Sapphire rod with flashlamps leads to a strong thermal-lensing effect [17]. To investigate the power of the thermal lens for our system, the beam spot has been analyzed at relevant locations along the beam path under typical running conditions. A set of measurements is shown in Fig. 6. The lengths of the minor and major axes of the ellipse formed by the laser spot decrease with distance from the cavity center and increase again after the focal waist has been reached. The measurements indicate a focus at ~ 1.1 m from the center of the cavity. Compared to the curvature of the resonator mirrors, the thermal lens is the dominating optic. To optimize the laser stability, thermal lensing has been

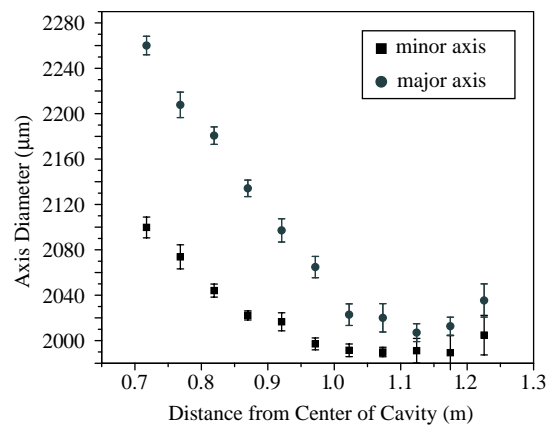


Fig. 6. Focusing of the laser beam due to thermal lensing at a laser wavelength of 805 nm and a flashlamp voltage of 8 kV. The dimensions of the laser spot ellipse are measured at the $1/e^2$ level.

³Model L8061E, T J Sales Associates Inc., ILC Technology Inc., Denville, NJ, USA.

⁴Union Carbide Crystal Products, Washougal, WA, USA.

⁵KTF-2 fluorescent converter, Kigre, Inc., Hilton Head, SC, USA.

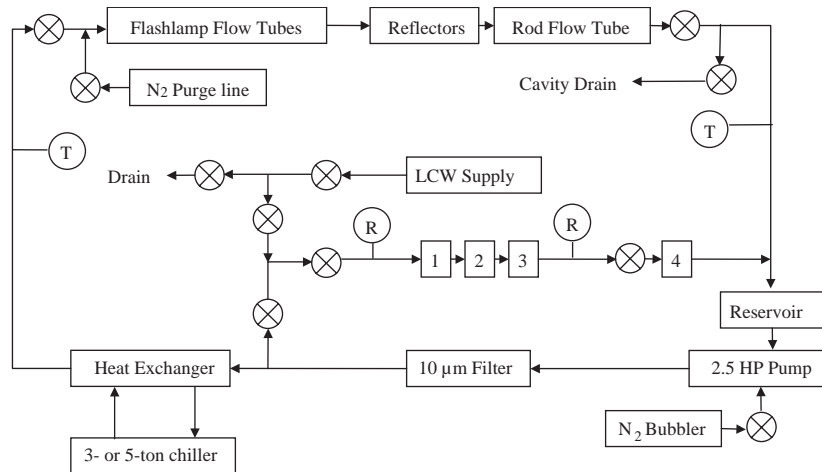


Fig. 7. Cooling water system components and water flow, including resistivity sensors (Ⓡ), temperature sensors (Ⓣ), valves (⊗), on-site low conductivity water (LCW), oxygen removal cartridge (1), activated carbon-organics filter (2), mixed bed deionizer (3), and submicron filter (4).

considered for end mirror selection and mirror spacing.

2.1.2. Flash:Ti cooling flow system

The cooling water flow system is a closed loop and can be refilled from on-site low-conductivity water. Fig. 7 shows a schematic of the water flow system. The system is designed to ensure a constant temperature of 76°F and nearly inert water conditions. The main loop is chilled by a heat exchanger and operates at a flow rate of 2.5 GPM. Ultra-pure water quality ($> 15 \text{ M}\Omega$) is established by a 1-GPM polishing loop which contains a 0.2 µm particle filter, a deionization filter, an organic filter, and an oxygen filter. A nitrogen bubbler significantly reduces the partial pressure of oxygen in the reservoir, minimizing the amount of oxygen dissolved in the water. This was of particular importance when the silver-coated reflectors were in use. The cooling water constantly flows through a 10-µm particle filter and a heat exchanger. Either a 3-ton or a 5-ton chiller can be used to provide cooling for the heat exchanger. Interlocks are connected to water flow, resistivity, and temperature sensors mounted near the laser head. The interlocks shut off the laser power supply if the sensor values move out of tolerance. For flashlamp changes the laser head

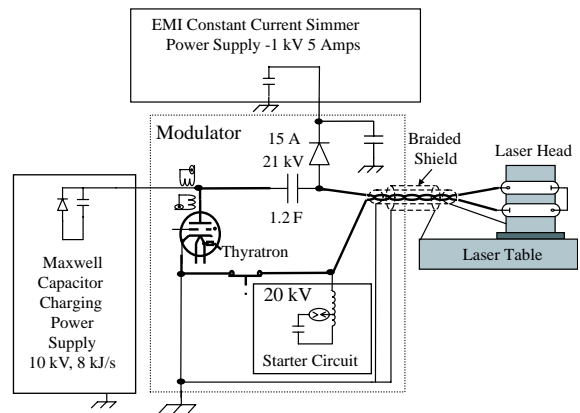


Fig. 8. Schematic circuit diagram of the Flash:Ti power supply.

can be drained and purged by a separate N_2 supply.

2.1.3. Flash:Ti modulator

The modulator (Fig. 8) was designed and built by SLAC personnel and provides the high-voltage pulse needed to fire the flashlamps. A 1.2-µF capacitor charges from a 10-kV, 8-kJ/s power supply.⁶ Upon ignition of a thyatron, the capacitor discharges through the two flashlamps in series. This produces an over-damped electrical

⁶CCDS 810TI, Maxwell Technologies, San Diego, CA, USA.

pulse whose characteristics are set by the capacitance of the capacitor and the stray inductance and resistance of the circuit components. The pulse has a peak current of 1 kA and a duration of 22 μ s. Between pulses, a current through the flashlamps is maintained by a “simmer” power supply.⁷ The simmer current reduces the high voltage needed for conduction in the lamps and thereby extends their lifetime.

2.2. Intensity control and pulse shaping

Immediately following the laser cavity on the Flash:Ti bench in Fig. 5 are optics dedicated to controlling the laser pulse’s energy, length, and temporal profile. Located between a pair of crossed polarizers, the “SLICE” Pockels cell is used to control the laser pulse’s energy and pulse length. The “start” trigger for the SLICE Pockels cell is set at the beginning of the low-jitter section of the laser pulse (see Fig. 13b). The duration of the sliced pulse is set by its “stop” trigger. Typical sliced pulse lengths are 50–370 ns. The SLICE Pockels cell is driven by a commercial high-voltage pulser.⁸ The amplitude of the high-voltage pulse controls the intensity of the laser pulse. We use the SLICE amplitude as the control device of a feedback system to stabilize the intensity of the electron beam. This feedback provides compensation for the slow decrease in cathode QE during its 3-day cesiation cycle as well as the slow degradation of the flashlamps’ efficiency during their lifetime. The half-wave plate located upstream of the SLICE Pockels cell provides a means of limiting the maximum sliced laser power to a level that is safe for accelerator operation.

We shape the laser pulse’s temporal profile using a Pockels cell–polarizer pair (TOPS, TOP-hat Pulse Shaper, shown schematically in Fig. 9) installed downstream of the SLICE Pockels cell. This shaping is used to compensate for beam loading and to achieve a small energy spread on the electron beam as described in Section 4.5.2. TOPS is a SLAC-built pulse-shaping Pockels cell

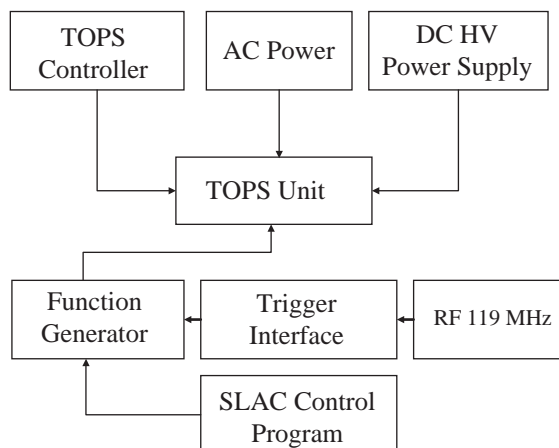


Fig. 9. Schematic of the TOP-hat Pulse Shaper electronics. The TOPS unit is installed on the Flash:Ti Bench (see Fig. 5) and contains the TOPS Pockels cell.

system driven by a Stanford Research Systems (SRS) DS345 30-MHz synthesized function generator. The SRS DS345 synthesized function generator has been modified internally. It uses the SLAC 119-MHz source as an oscillator. Power for the Pockels cell is supplied by a SLAC-built DC power supply. Control power for the TOPS system is supplied by the TOPS controller unit. The reference signal, which controls the Pockels cell, comes from the function generator. The function generator is integrated into the SLAC Control Program (SCP) through its GPIB interface. Remote control is achieved via an Experimental Physics and Industrial Control System (EPICS) user interface. The function generator allows one to generate an arbitrary waveform in 25-ns steps. A typical pulse profile is shown in Fig. 10. Using TOPS to compensate for beam loading and minimize each pulse’s energy spread is discussed further in Section 4.5.2.

2.3. Diagnostics

The laser beam is folded at multiple locations using broadband NIR-coated (near-infrared) high-reflectivity mirrors. We use leakage light through these mirrors or a sampled beam for diagnostic purposes. We routinely monitor laser intensity, jitter, wavelength and spot size. The locations of

⁷ Model 1000TS, EMI, Neptune, NJ, USA.

⁸ Model PVX-3110, Directed Energy, Inc., Fort Collins, CO, USA.

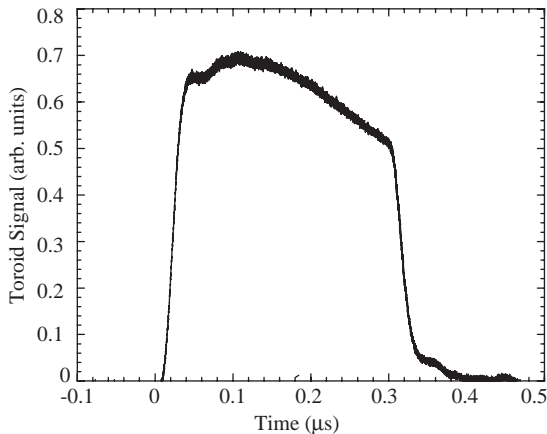


Fig. 10. Electron beam temporal profile resulting from using TOPS for beam-loading compensation.

the diagnostics are shown in Fig. 5. One photodiode installed upstream of the pulse-shaping optics monitors the Flash:Ti laser output (Long-pulse PD). A holographic beam sampler⁹ downstream of the pulse-shaping optics supplies two one-percent samples of the laser beam. One sample is used to monitor the intensity of the sliced pulse (SLICE PD). The second sample is focused onto a scanning monochromator for wavelength measurements or can be used to image the beam spot onto a CCD camera.

2.4. Laser performance

We summarize below the performance of the upgraded Flash:Ti laser system during recent running. We briefly review the laser's performance during T-437 and the 2001 Engineering Run, and then focus on its performance during Physics Run I. The performance of the laser system for the earlier runs is more fully described in Ref. [18]. The operating parameters of the laser system for Physics Run I are summarized in Table 1.

2.4.1. Flash:Ti performance during T-437 and the E-158 Engineering Run

T-437 and the E-158 2001 Engineering Run preceded the Flash:Ti cavity optimization and

thermal lensing studies. In addition, the cathode used for those runs required a wavelength of 852 nm for maximum electron polarization, causing the laser to operate fairly far from the gain maximum for Ti:Sapphire. We achieved a laser power of ~ 20 mJ in a 15- μ s laser pulse with the laser cavity tuned to this wavelength. The SLICE Pockels cell described in Section 2.2 was set to slice a 130-ns pulse (370 ns for T-437) out of the area of highest stability, resulting in a pulse of 1.5% rms intensity jitter (1.0% rms for T-437). The pulse energy was ~ 175 μ J for these conditions during the Engineering Run.

2.4.2. Flash:Ti performance during Physics Run I

A number of modifications improved the performance of the laser system for E-158 Physics Run I. First, the new photocathode requires a laser wavelength of 805 nm for peak electron polarization. At 805 nm the laser operates closer to the gain maximum of the Ti:Sapphire laser crystal, yielding a significant enhancement of laser performance. Furthermore, the consideration of thermal lensing described in Section 2.1.1 and appropriate end mirror selection were essential for improved performance. We also began to study the dependence of energy jitter on the laser power supply high voltage and the current of the switching thyatron. These were then optimized to minimize the laser's energy jitter. As the flashlamps and thyatron age they require small adjustments of the thyatron reservoir voltage.

Slow drifts in laser power and stability caused by humidity and temperature variations are minimized by appropriate air conditioning and humidity control. The temperature and humidity in the laser room are stable at $23.0 \pm 0.1^\circ\text{C}$ rms and $35 \pm 1\%$ rms, respectively. Figs. 11 and 12 show the stability of the temperature and humidity in the Laser Room which houses the polarized source laser and optics systems.

Typical cavity output power at 805 nm is ~ 45 mJ. Pulse slicing provides a pulse of 50–370 ns with a maximum energy of ~ 600 μ J per pulse (in 370 ns). During typical physics running, the laser pulse provided ~ 60 μ J in 270 ns in order to generate an electron beam pulse of $\sim 6 \times 10^{11}$ electrons/spill. Figs. 13a and b show the

⁹Gentec Electro-Optics, Quebec, QC, Canada.

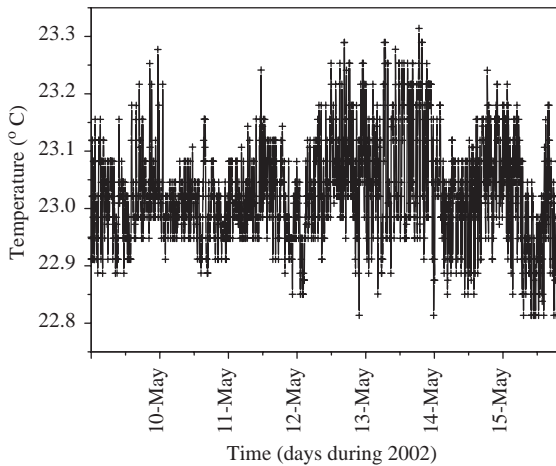


Fig. 11. Temperature stability of the Laser Room housing the polarized source laser and optics systems over a one-week time period.

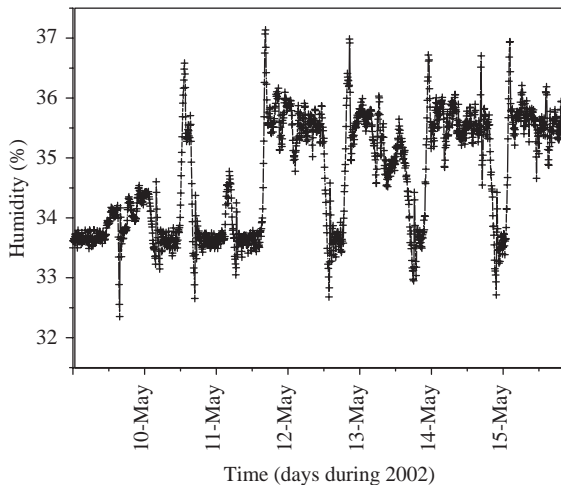


Fig. 12. Humidity stability of the Laser Room housing the polarized source laser and optics systems over a one-week time period.

temporal shape and the stability of the 15- μ s laser pulse for a 100-pulse sample. Also indicated in Fig. 13b is the area of slicing, located at the point in time at which the laser energy jitter is at a minimum. The spatial profile of the laser beam, measured on the Diagnostics Bench and shown in Fig. 13c, indicates the multimodal structure of the laser pulse. Multimodal operation of the laser is necessary in order to generate the 15- μ s pulse from

which 50–370 ns can be sliced with a flat-top profile. Fig. 10 shows the temporal profile of the electron beam at the first fast toroid following the cathode. Its profile reflects the profile of the sliced laser beam after it has been shaped by TOPS in order to compensate for beam-loading effects.

A pulse stability of $\sim 0.5\%$ rms was maintained throughout the run. A time history of the intensity jitter in the electron beam for a typical one-week period as measured by the first toroid downstream of the cathode (toroid 488) is shown in Fig. 14. The stability of the laser and electron beam intensities at 120 Hz as measured at the SLICE photodiode and toroid 488 are shown in Figs. 15a and b, respectively. Fig. 15c shows the pulse-to-pulse jitter of the polarized electron beam at toroid AB01 60 located at the end of the accelerator near the target. The high degree of correlation between toroid 488 and toroid AB01 60, shown in Fig. 16, demonstrates the importance of a highly stable electron source. Almost no additional instabilities in the intensity are introduced throughout the two-mile-long accelerator.

The maintenance of the laser system during the E-158 runs (5 months continuous operation at 60 Hz for the Engineering Run and 5 months for Physics Run I at a mix of 60 and 120 Hz) consists of flashlamp changes every $\sim 1.45 \times 10^8$ laser pulses (28 days at 60 Hz and 14 days at 120 Hz) and cooling water system filter changes every 6 months. Changing the flashlamps requires one hour and can often be scheduled to occur during other planned interruptions to beam delivery, making the impact of laser system maintenance on E-158's running efficiency negligible. We observe no significant drop in laser performance due to the aging of flashlamps or water filters.

3. Helicity control bench and transport optics to cathode

In this section we describe the optics that follow the laser and pulse-shaping systems. These optics circularly polarize the laser beam in a manner that permits selecting the helicity in a pseudorandom sequence on a pulse-by-pulse basis. The circularly polarized light is then transported to the cathode

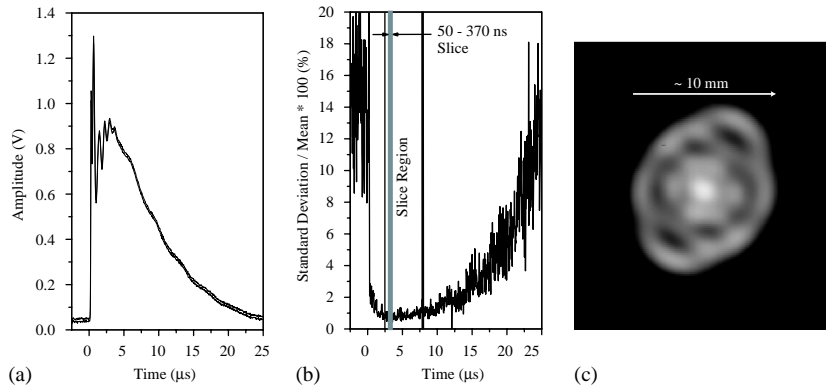


Fig. 13. (a) Photodiode signal of the Flash:Ti laser pulse. The two traces form an envelope about a sample of 100 measured pulses, indicating the pulse-to-pulse stability of the laser’s temporal profile. (b) Energy jitter as a function of time within the pulse. The SLICE Pockels cell is used to select the 50–370 ns region of lowest energy jitter, marked by the vertical lines. (c) The spatial profile of the sliced pulse.

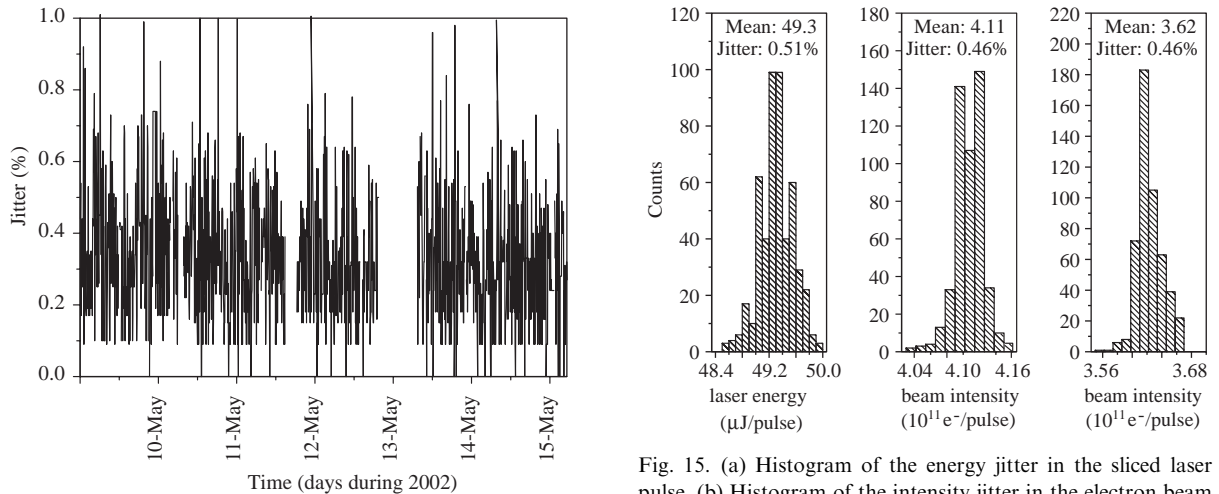


Fig. 14. Intensity jitter of the electron beam at the first toroid following the cathode over a one-week time period. Each point on the plot represents the rms of 10 sampled pulses.

Fig. 15. (a) Histogram of the energy jitter in the sliced laser pulse. (b) Histogram of the intensity jitter in the electron beam in the injector. (c) Histogram of the intensity jitter in the electron beam at the end of the accelerator.

and care is taken to minimize distortions in the laser polarization. As mentioned below (and discussed in detail in Section 4), small distortions generate significant amounts of linear polarization and ultimately contribute to helicity-correlated asymmetries.

3.1. Circular polarization

The polarization optics, shown in Fig. 17, are designed to generate highly circularly polarized

light of either helicity while minimizing $^{beam}A_{LR}$ ’s. The “Cleanup Polarizer” and the “Circular Polarization” (CP) and “Phase Shift” (PS) Pockels cells collectively determine the polarization of the beam.¹⁰ The Cleanup Polarizer also functions to combine the YLF:Ti beam used to generate

¹⁰ All three Pockels cells on the Helicity Control Bench (CP, PS, and IA) are 20-mm-aperture Cleveland Crystals model QX2035, specified to be windowless, to be parallel to better than 0.5 arcminute, and to be broadband AR-coated centered at 800 nm. Cleveland Crystals, Inc., 676 Alpha Dr., Highland Hts., OH 44143, USA.

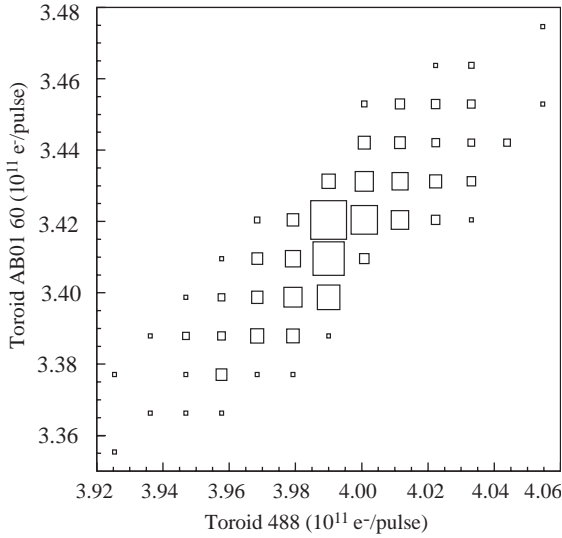


Fig. 16. Correlation plot of raw intensities as measured by toroid 488, located in the injector, and toroid AB01 60, located between the Linac and the E-158 target. The size of each square is proportional to the number of counts in its bin.

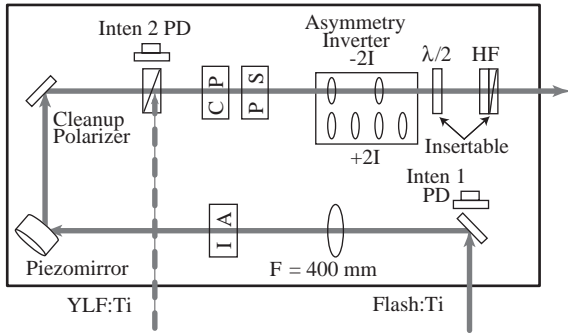


Fig. 17. The helicity control bench contains the optics for control of the laser beam’s polarization and $^{beam}A_{LR}$ ’s.

electrons for the PEP rings¹¹ with the Flash:Ti beam so that they share a common path through the remaining transport optics. The CP cell acts as a quarter-wave plate with its fast axis at 45° from the horizontal. The sign of its retardation can be chosen on a pulse-by-pulse basis, generating circularly polarized light of either helicity. Its

quarter-wave voltage is approximately 2.7 kV. Adjusting its voltage from the quarter-wave setting allows the CP cell to compensate for linear polarization along the horizontal and vertical axes that arises from either residual birefringence in the Pockels cell or phase shifts in the optics between the Pockels cells and the photocathode. The PS cell, with a vertical fast axis, is pulsed at low voltages ($\lesssim 150$ V) and is used to compensate for residual linear polarization along the axes at $\pm 45^\circ$. The phase shift $\delta_{CP(PS)}$ induced by the CP (PS) cell is given by the relation

$$\delta_{CP(PS)} = \frac{\pi}{V_{\lambda/2}} V_{CP(PS)}, \quad (4)$$

where $V_{\lambda/2}$ is the voltage required for half-wave retardation (typically ~ 5.4 kV) and $V_{CP(PS)}$ is the voltage across the CP (PS) cell.

3.1.1. Polarization analysis

To understand the function of the CP and PS cells, it is useful to develop expressions for the polarization of the laser beam in terms of the phase shifts induced by the CP and PS cells. The electric field of a 100% polarized laser beam can be written as

$$\begin{aligned} \vec{E} &= E_0(\cos \theta \cdot \hat{x} + e^{i\phi} \sin \theta \cdot \hat{y}) e^{i(kz - \omega t)} \\ &= \begin{bmatrix} \cos \theta \\ e^{i\phi} \sin \theta \end{bmatrix}, \end{aligned} \quad (5)$$

where the vector expression is the Jones matrix notation [20]. A useful method for characterizing the polarization of the beam utilizes the Stokes parameters. If we assume that the beam is totally polarized and normalize the Stokes parameters to the intensity we then have

$$\begin{aligned} S_1 &= \cos 2\theta = (X - Y)/(X + Y), \\ S_2 &= \sin 2\theta \cos \phi = (U - V)/(U + V), \\ S_3^H &= \sin 2\theta \sin \phi = (R^H - L^H)/(R^H + L^H), \\ (S_1^2 + S_2^2) + (S_3^H)^2 &= L^2 + C^2 = 1, \end{aligned} \quad (6)$$

where S_1 is a measure of linear polarization along the horizontal and vertical axes, S_2 is a measure of linear polarization along the axes at $\pm 45^\circ$ to the vertical, S_3^H is a measure of the degree of circular polarization, X and Y represent intensities projected along the horizontal and vertical axes, U

¹¹ For E-158’s Physics Run I, it shared accelerator pulses with the BaBar experiment that utilized the PEP storage rings [19]. The BaBar experiment does not utilize the beam polarization.

and V represent intensities projected along the axes at $\pm 45^\circ$ to the vertical, and R^H and L^H represent intensities projected onto a decomposition into right- and left-helicity circularly polarized light. The superscript “H” is to indicate that we refer to the circular polarization in terms of its helicity for consistency with the particle physics definition, and S_3^H is defined such that it is +1 for right-helicity circular polarization. Two parameters, S_1 and S_2 , are required to completely describe the linear polarization state of the beam. We see from the last line of Eqs. (6) that the linear and circular polarization components are constrained to add in quadrature to a value of one. One implication is that for a reasonably well circularly polarized beam, a small phase shift may have a negligible effect on the magnitude of the circular polarization while simultaneously inducing a large linear polarization. For instance, a perfectly circularly polarized beam at 805 nm which acquires a 2-nm phase shift passing through a thin low-stress window will have a circular polarization of 99.988% and a linear polarization of 1.6%.

The SLAC polarized source optical system includes elements such as the CP and PS Pockels cells, a half-wave plate, and additional optical elements that may each possess a small amount of birefringence. These components can be well approximated as different cases of a unitary Jones matrix for a rotated retardation plate [20]:

$$J_{\text{RET}} = \begin{bmatrix} \cos^2 \gamma + e^{i\delta} \sin^2 \gamma & (1 - e^{i\delta}) \sin \gamma \cos \gamma \\ (1 - e^{i\delta}) \sin \gamma \cos \gamma & \sin^2 \gamma + e^{i\delta} \cos^2 \gamma \end{bmatrix}. \quad (7)$$

Here, γ is the angle between the retarder’s fast axis and the horizontal axis and δ is the retardation induced between the fast and slow axes.

The Cleanup Polarizer is oriented to transmit horizontally linearly polarized light; thus the initial electric vector can be represented as

$$\vec{E}_i = \begin{bmatrix} 1 \\ 0 \end{bmatrix}. \quad (8)$$

The CP cell has its fast axis at 45° from the horizontal ($\gamma = \pi/4$), induces a retardation δ_{CP} ,

and can be represented by the matrix

$$J_{\text{CP}} = \frac{1}{2} \begin{bmatrix} 1 + e^{i\delta_{\text{CP}}} & 1 - e^{i\delta_{\text{CP}}} \\ 1 - e^{i\delta_{\text{CP}}} & 1 + e^{i\delta_{\text{CP}}} \end{bmatrix}. \quad (9)$$

The PS cell has its fast axis vertical ($\gamma = \pi/2$), induces a retardation δ_{PS} , and can be represented by the matrix

$$J_{\text{PS}} = \begin{bmatrix} e^{i\delta_{\text{PS}}} & 0 \\ 0 & 1 \end{bmatrix}. \quad (10)$$

Calculating the state of the polarization vector immediately following the PS cell and multiplying both components by an additional phase shift in order to write the vector in a convenient form yields

$$\vec{E}_f = J_{\text{PS}} \cdot J_{\text{CP}} \cdot \vec{E}_i = \begin{bmatrix} \cos \delta_{\text{CP}}/2 \\ e^{-i(\frac{\pi}{2} + \delta_{\text{PS}})} \sin \delta_{\text{CP}}/2 \end{bmatrix}. \quad (11)$$

This optical configuration allows the generation of arbitrary elliptically polarized light. Comparing Eqs. (5) and (11), we see that δ_{CP} determines the relative amplitude of the x and y components of the electric field, and δ_{PS} determines their relative phase. Writing down the Stokes parameters for the light leaving the PS cell, we have

$$\begin{aligned} S_1 &= \cos \delta_{\text{CP}}, \\ S_2 &= -\sin \delta_{\text{CP}} \sin \delta_{\text{PS}}, \\ S_3^H &= -\sin \delta_{\text{CP}} \cos \delta_{\text{PS}}. \end{aligned} \quad (12)$$

As we indicated earlier, δ_{CP} is set to values close to $\pm \pi/2$ and δ_{PS} is set to values close to 0. For these values, the Stokes parameter S_1 is sensitive to small changes in δ_{CP} , while S_2 is sensitive to small changes in δ_{PS} . Utilizing the Cleanup Polarizer and CP and PS cells in this configuration allows us to generate a laser beam of arbitrary elliptical polarization. A convenient feature of this configuration is that any residual linear polarization can be decomposed into components that are separately adjustable by the CP cell (S_1) and the PS cell (S_2).

3.1.2. Pockels cell setup

It is important to be able to properly align the Pockels cells with respect to the laser beam and to choose the portion of the crystal through which

the beam passes. To this end, we choose mounts for the Pockels cells that are adjustable in pitch, yaw, and roll and allow translation along both axes perpendicular to the beam. The Pockels cells are initially aligned for pitch and yaw between crossed polarizers (the Cleanup Polarizer and an auxiliary analyzer), first adding the CP cell and recovering extinction, and then adding the PS cell. The orientation of the Pockels cell fast and slow axes can be determined by then pulsing them one at a time at a high voltage (~ 2 kV) and adjusting the roll angle until extinction is recovered. In this configuration, either the fast or slow axis is now parallel to the upstream polarizer. The CP cell is then rotated by 45° ; its orientation is verified and set more precisely later. The PS cell is left in this orientation.

At this point, the analyzer is removed and the Helicity Filter¹² (HF) is used to check the alignment and set the initial Pockels cell voltages. The HF consists of a linear polarizer and a quarter-wave plate fixed in orientation so that it transmits right-helicity light and extinguishes left-helicity light. The nominal quarter-wave voltages for each helicity are set by sweeping the CP cell through the range $\pm(1500\text{--}3900\text{ V})$ in 11 steps, measuring the transmitted light intensity, and fitting a parabola to the results. Similarly, the nominal PS voltages are determined by setting the CP quarter-wave voltage for each state and sweeping the PS cell from -1500 V to $+1500\text{ V}$ in 11 steps, measuring the transmitted light intensity, and again fitting a parabola to the results. To be satisfied with the alignment, we require that the extinction ratio between transmitted and extinguished states be greater than 1000:1, that the sum of the CP right- and left-helicity voltages be below 100 V, and that the difference of the PS right- and left-helicity voltages be below 100 V. The difference between the PS voltages is very sensitive to the alignment of the CP cell roll angle and provides the best means of verifying that it is properly oriented. If the PS cell voltages are greater than 100 V apart, the CP and PS cells are set to their left-helicity voltages so that they are extinguished by the HF, and the roll angle

of the CP cell is adjusted to minimize transmission. Then the voltage scans are repeated. Requiring an extinction ratio of $\geq 1000:1$ implies a circular polarization of $\geq 99.8\%$ and an unpolarized component of $\leq 0.2\%$. An additional check of the voltages for right-helicity light, which are measured above in transmission, can be made by using the insertable half-wave plate mounted just upstream of the HF. This allows us to measure the voltages for right-helicity light in extinction. Finally, we check the quality of the laser beam polarization on the photocathode. We do this by letting the beam strike the cathode and measuring the intensity asymmetry as the Pockels cell voltages are varied from their nominal values. This procedure is described in more detail in Section 5.1.1 and allows us to adjust the CP and PS cell voltages to compensate for residual birefringence in the optics between them and the photocathode. A final cross check on the laser beam polarization is a scan of the Pockels cell voltages while measuring the electron beam polarization. The only available electron beam polarimeter is the Møller polarimeter in End Station A, so this check can only be conducted while E-158 is running. Typical operating voltages for the CP and PS cells are given in Table 5, Section 5.1.1.

The laser spot size and collimation at the CP and PS cells are also important parameters of the setup. We observe that by minimizing the diameter of the laser beam at the CP and PS cells we can reduce our sensitivity to spatial variation in the retardation they induce. However, because the Pockels cells are naturally birefringent,¹³ it is important to keep the beam well collimated passing through them for two reasons: to ensure that all rays receive an equal retardation and to minimize the correlation between position and angle within the beam. The beam size and divergence at the CP and PS cells are set by the three lenses on the Flash:Ti, Diagnostics, and Helicity Control benches (Figs. 5 and 17). The lenses' focal lengths and locations (listed in

¹²Meadowlark Optics, Frederick, Colorado, USA.

¹³The optic axis has $n_e = 1.4638$ and the transverse plane has $n_o = 1.5021$ at $\lambda = 694\text{ nm}$.

Table 3) are chosen to yield a beam waist of approximately 1 mm rms at the CP and PS cells.

3.1.3. *Insertable half-wave plates*

Two remotely insertable zeroth-order half-wave plates in the optics system following the polarization optics can be used to introduce a slow reversal of the laser helicity. Such a reversal is very useful for suppressing certain classes of false asymmetries, as is discussed in Section 5.4. One half-wave plate is located on the Helicity Control Bench

(Fig. 17), where it is also useful for setting the initial Pockels cell voltages with the HF. The second half-wave plate is located on the Cathode Diagnostics Bench (Fig. 18).

3.2. *Laser transport optics and Cathode Diagnostics Bench*

We describe next the optical system between the polarization optics and the cathode. These optics image the CP cell onto the cathode while

Table 3

Lens locations (z loc.) and focal lengths (f) used to control beam size at CP and PS cells and imaging of CP cell onto cathode. Locations of the CP and PS cells are also included

z loc. (m)	Location	Part number	f (mm)	Purpose
1.691	Flash:Ti Bench	Newport KPX121	750	Beam Size, Collimation at CP Cell
4.319	Diagnostics Bench	Newport KPX118	500	
5.479	Hel. Con. Bench	Newport KPX115	400	
6.434	Hel. Con. Bench	CP Cell		
6.616	Hel. Con. Bench	PS Cell		
6.670	Hel. Con. Bench	Newport KBX061	88.3	Asym. Inv. “-” State
6.968	Hel. Con. Bench	Newport KBX076	200	
6.629	Hel. Con. Bench	Newport KBX142	50.2	Asym. Inv. “+” State
6.758	Hel. Con. Bench	Newport KBX148	75.6	
6.850	Hel. Con. Bench	Newport KBX142	50.2	
6.979	Hel. Con. Bench	Newport KBX148	75.6	
19.298	Transport Pipe	CVI PLCX-50.8-3863.0-C	7500	Imaging
28.595	Cath. Diag. Bench	Newport KBC085	-75	
28.636	Cath. Diag. Bench	Newport KPX187	100	

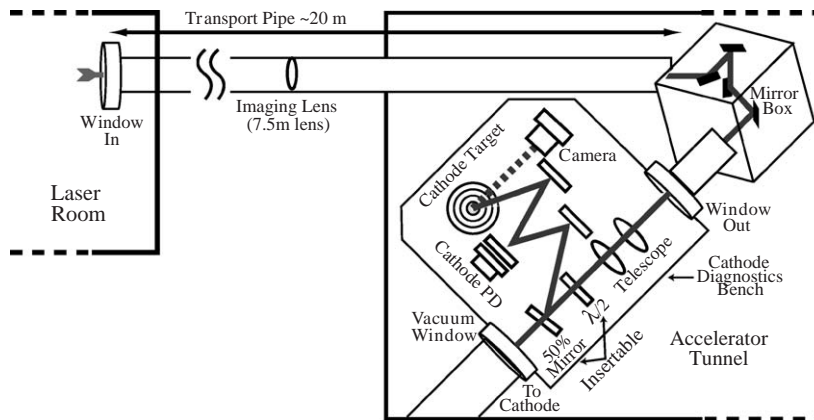


Fig. 18. The optical transport system and the Cathode Diagnostics Bench.

preserving the circular polarization of the beam. An “Asymmetry Inverter” consisting of two beam expanders with magnifications of equal magnitude and opposite sign (see Fig. 17) can be toggled between two positions to provide some cancellation for helicity-correlated changes in the laser beam position and angle. We used the software packages PARAXIA and ZEMAX to model gaussian beam propagation through the transport optics and to design the transport optics.

3.2.1. Imaging

We image the CP cell onto the cathode in order to minimize the contribution of any helicity-correlated steering arising from the CP cell. The imaging optics consist of the 7.5-m lens in the Transport Pipe and the telescope on the Cathode Diagnostics Bench (shown in Fig. 18 and listed in Table 3). The imaging optics are designed to bring the laser beam through a waist between the telescope and the cathode to avoid clipping in the 14-mm-diameter pipe that leads from the Cathode Diagnostics Bench to the cathode.

3.2.2. Asymmetry Inverter

The “Asymmetry Inverter” consists of two beam expanders on a translation stage as shown in Fig. 17. The effect of the Asymmetry Inverter on an optics ray can be described by $|\tilde{x}\rangle = M|x\rangle$, or equivalently

$$\begin{bmatrix} \tilde{x} \\ \tilde{x}' \end{bmatrix} = \begin{bmatrix} M_{11} & M_{12} \\ M_{21} & M_{22} \end{bmatrix} \begin{bmatrix} x \\ x' \end{bmatrix}, \quad (13)$$

where x (x') is the position (angle = dx/dz) of the optics ray entering the Asymmetry Inverter, \tilde{x} (\tilde{x}') is the position (angle) of the optics ray exiting the Asymmetry Inverter, and M is the transport matrix characterizing the Asymmetry Inverter. We designed the “+” and “−” optics to yield

$$M^{\pm} = \begin{bmatrix} \pm 2.25 & 0 \\ 0 & \pm 0.44 \end{bmatrix}. \quad (14)$$

Thus, the rays leaving the Asymmetry Inverter satisfy

$$|\tilde{x}\rangle^{-} = -|\tilde{x}\rangle^{+}. \quad (15)$$

The magnification of 2.25 is needed to assist in the beam transport to the cathode. Taking equal amounts of physics data in the two Asymmetry Inverter configurations allows for cancellation of certain contributions to the $^{\text{beam}}A_{\text{LR}}$'s and is discussed in Section 5.4.2.

3.2.3. Preserving circular polarization

The transported laser beam must retain a high degree of circular polarization. We employ several strategies to achieve this. First, we minimize the number of optical elements in the transport system by placing the laser beam diagnostics in the auxiliary diagnostic line accessed by the insertable 50% mirror. Second, the four mirrors in the Mirror Box are arranged in two helicity-compensating pairs, for which the bounces within each pair interchange ‘s’ and ‘p’ polarizations. Thus, the difference in phase shifts and losses between the ‘s’ and ‘p’ polarizations for a given mirror are cancelled between the members of each pair. Care was taken to make certain that the four mirrors all came from the same coating run.¹⁴ Finally, the transport pipe, which has historically been held under vacuum as part of a Class-IV laser containment system, is being used at atmospheric pressure for E-158 in order to minimize stress-induced birefringence in its end windows. Alternate arrangements have been made to ensure the integrity of the transport pipe for laser safety purposes.

3.3. Helicity control and data acquisition

The beam helicity is controlled by the “Polarization MONitor” (PMON) system. PMON's interaction with the optics hardware and the DAQs is shown in schematic form in Fig. 19. PMON is a set of SLAC-built custom electronics that generates a pseudorandom sequence of polarization states (“polbits”) using a 33-bit shift register algorithm as described in Ref. [21] (We implemented the pseudo-random helicity sequence according to the method described on pp. 437–442.) The fast, pseudorandom helicity sequence

¹⁴The mirrors are CVI TLM2-825-45-2037, specified to be from the same spindle and same coating run. CVI Laser Corporation, Albuquerque, NM, USA.

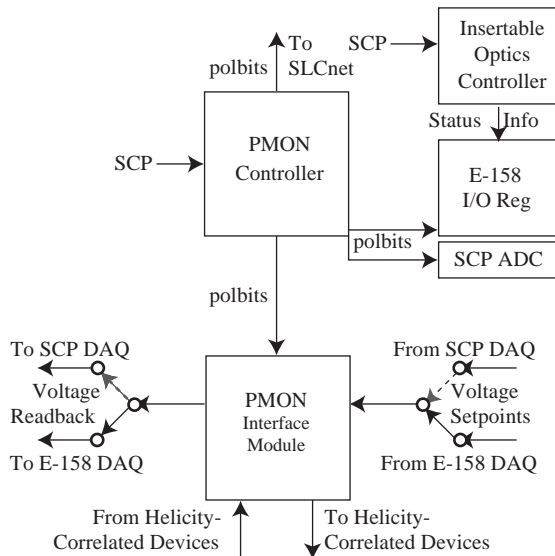


Fig. 19. A schematic of the Polarization MONitor (PMON) electronics. Control of the helicity-correlated devices can be switched between the SCP and E-158 DAQs by swapping the “Voltage Setpoints” and “Voltage Readback” cables at the PMON Interface Module. Additional copies of the polarization states (polbits) are available to an ADC read out by the SCP DAQ and to an E-158 I/O Register during commissioning but are eliminated during physics running.

reduces the experiment’s sensitivity to low-frequency noise and slow drifts in the experimental apparatus. At 120 Hz, this sequence repeats approximately once every two years. Because the dominant noise in the electronic environment surrounding the accelerator is at 60 Hz, we choose to treat the 120-Hz triggering as two separate 60-Hz time slots. We do this by imposing a quadruplet structure on the helicity sequence in which two consecutive pulses have randomly chosen helicities and the subsequent two pulses are chosen to be their complements. For example, a possible sequence could be “LRRL LLRR.” In the data analysis, asymmetries are calculated for each pair of events, where pairs are formed between the first and third members of the quadruplet, and between the second and fourth members. In this way we calculate pairwise asymmetries between pulses that are at the same phase with respect to the 60-Hz noise. The pseudorandom sequence also provides a means of error checking in the offline analysis. Observing

the helicity state of 33 consecutive pairs allows one to predict the state of future pairs. Comparing the predicted state with the actual state transmitted to the DAQ can be used to look for data acquisition errors. PMON determines the pulse sequence, sets the appropriate voltages for all helicity-correlated devices (the CP, PS, and IA Pockels cells and the piezomirror), and distributes the helicity information and pulse identification number to the DAQs.

PMON interacts with two DAQs in order to control the helicity-correlated devices. For testing and commissioning the source optics, we use PMON with the SLC Control Program (SCP). For test beams and physics running, PMON works with the E-158 DAQ to control the optics. Switching between the two DAQ systems is done by swapping a pair of cables at the PMON Interface Module that are used for the setting and readback of voltages for the helicity-correlated devices. SCP is also used to control which algorithm the PMON Controller uses to generate the helicity sequence. Five sequences are available: the pseudorandom sequence described above, an alternating left/right sequence, all left-helicity pulses, all right-helicity pulses, and all no-helicity pulses (for which none of the helicity-correlated devices are operated). The “Insertable Optics Controller” is a SLAC-built module which receives control signals from SCP and sends the appropriate voltage levels to the insertable optical elements. It also sends status information to the E-158 I/O Register.

Three techniques are implemented in PMON to prevent the transmission of helicity information to the DAQs from introducing false asymmetries via electronic cross talk. First, PMON delays the transmission of helicity information by one pulse. This delay destroys the correlation between the actual beam helicity and the helicity information received by the DAQ. Second, PMON converts the helicity information from a digital signal to an RF signal before transmitting it to the experiment over “SLCnet”, a dedicated copper transmission line. A PMON Receiver module in the E-158 DAQ decodes the RF signal. Third, additional copies of the polarization information that are available as analog voltage levels during commissioning of the SCP and E-158 DAQs are eliminated for physics running.

3.4. Helicity-correlated feedback hardware

Three active feedback loops are used to further suppress $^{\text{beam}}A_{\text{LR}}$'s. In addition to the passive means of suppression, active feedback on the intensity asymmetry and position differences is necessary to ensure that they converge to values below those listed in Eq. (3). One feedback loop (the “IA loop”) balances A_I between the two helicity states. This is accomplished by using the “Intensity Asymmetry” (IA) Pockels cell, located upstream of the Cleanup Polarizer (see Fig. 17). A second feedback loop, the “Phase Feedback”, keeps the corrections generated by the IA loop small by adjusting the voltages applied to the polarization Pockels cells. A third feedback loop (the “POS loop”) compensates for $D_{X(Y)}$ and $D_{X'(Y')}$. This is accomplished by the “piezomirror”, a standard 1-in. diameter mirror attached to a piezoelectric mount. The IA, POS, and Phase Feedback loops are discussed in more detail in Section 5.3.

4. Sources of helicity-correlated electron beam asymmetries ($^{\text{beam}}A_{\text{LR}}$'s)

This section discusses sources of helicity-correlated beam asymmetries. The most important source of beam asymmetries is the interaction of imperfections in the laser beam's circular polarization with the cathode's QE anisotropy, and this subject is the focus of this section. Additional effects and their relative importance for the SLAC source are briefly discussed at the end.

4.1. Derivation of the polarization-induced transport asymmetry

The primary mechanism for generating a helicity-correlated asymmetry in the intensity of the polarized electron beam, A_I , is a coupling between helicity-correlated changes in the orientation of residual linear polarization in the laser beam and the cathode's QE anisotropy. The linear polarization components are a consequence of residual birefringence in the CP and PS cells and in the optics between them and the cathode. This

residual birefringence is significant: a typical low-birefringence window produces a phase shift per unit thickness of 5 nm/cm. The strained GaAs cathode's QE anisotropy provides a large analyzing power for incident linear polarization, typically on the order of 5–15% [13]. Uncorrected, a 5-nm phase shift can produce a helicity-correlated variation in electron beam intensity at the level of 0.4%, four orders of magnitude larger than the experimental requirement. Similar polarization-related effects have sometimes been referred to Ref. [22] as PITA (Polarization-Induced Transport Asymmetry) effects and are often a dominant source of $^{\text{beam}}A_{\text{LR}}$'s. We derive an expression for A_I for the case of the SLAC polarized electron source optics, identify the relevant phases, and examine the implications for controlling $^{\text{beam}}A_{\text{LR}}$'s. We also find that if the residual linear polarization of the laser beam varies spatially, it can give rise to helicity-correlated position and spot-size differences. We note that while in the analysis below the only analyzing power is a transport element in the optics system, the QE anisotropy of the cathode behaves formally in the same way.

We can understand the origin of A_I by considering a system (as described in Section 3.1) comprised of horizontally polarized light incident in turn on the CP cell, the PS cell, and an asymmetric transport element. The final electric vector can be computed by multiplying the initial electric vector by the appropriate matrices:

$$\vec{E}_f = J_{\text{AT}} \cdot J_{\text{PS}} \cdot J_{\text{CP}} \cdot \vec{E}_i, \quad (16)$$

where J_{CP} and J_{PS} are given by Eqs. (9) and (10) and J_{AT} is an asymmetric transport element which provides an analyzing power that is sensitive to the orientation of linear polarization and does not introduce any depolarization. Assuming the asymmetric transport element has transmission coefficients $T_{x'}$ and $T_{y'}$ along some axes x' and y' , we have

$$J_{\text{AT}} = \begin{bmatrix} T + \frac{\varepsilon}{2} \cos 2\theta & \frac{\varepsilon}{2} \sin 2\theta \\ \frac{\varepsilon}{2} \sin 2\theta & T - \frac{\varepsilon}{2} \cos 2\theta \end{bmatrix}, \quad (17)$$

where $T = (T_{x'} + T_{y'})/2$, $\varepsilon = T_{x'} - T_{y'}$, and θ is the angle between x' and the horizontal axis. The

difference in transport efficiency along x' and y' is taken to be small ($\varepsilon \ll T$). Forming the intensity,

$$\begin{aligned} I &= \vec{E}_f^* \cdot \vec{E}_f \\ &= T^2 + \frac{\varepsilon^2}{4} + \varepsilon T \cos \delta_{\text{CP}} \cos 2\theta \\ &\quad - \varepsilon T \sin \delta_{\text{CP}} \sin \delta_{\text{PS}} \sin 2\theta, \end{aligned} \quad (18)$$

we see that the final intensity of the beam is modulated by the phase shifts induced by the CP and PS cells and the orientation of the asymmetric transport element. We allow the CP and PS cells to induce retardations that provide a fully general description of elliptically polarized light. We choose a particular way to write them, however, so that the asymmetry has a simple form:

$$\begin{aligned} \delta_{\text{CP}}^{\text{R}} &= -\left(\frac{\pi}{2} + \alpha_1\right) - \Delta_1, \\ \delta_{\text{CP}}^{\text{L}} &= +\left(\frac{\pi}{2} + \alpha_1\right) - \Delta_1, \end{aligned} \quad (19)$$

$$\delta_{\text{PS}}^{\text{R}} = -\alpha_2 - \Delta_2, \quad \delta_{\text{PS}}^{\text{L}} = +\alpha_2 - \Delta_2,$$

where the superscripts R, L indicate right- and left-helicity light and the imperfect phase shifts have been parameterized in terms of “symmetric” (α) and “antisymmetric” (Δ) pieces such that $\alpha_1 = \Delta_1 = \alpha_2 = \Delta_2 = 0$ corresponds to perfectly circularly polarized light. We give the phases from the CP cell a subscript “1” because Stokes parameter S_1 is particularly sensitive to δ_{CP} . Similarly, the phases induced by the PS cell carry a subscript “2” to emphasize that Stokes parameter S_2 is particularly sensitive to δ_{PS} . These sensitivities are evident from the Stokes vector for the light following the PS cell in this parameterization (where the small-angle approximation is made):

$$\begin{aligned} S_1^{\text{R}} &= -\alpha_1 - \Delta_1, & S_1^{\text{L}} &= -\alpha_1 + \Delta_1, \\ S_2^{\text{R}} &= -\alpha_2 - \Delta_2, & S_2^{\text{L}} &= -\alpha_2 + \Delta_2, \\ S_3^{\text{H,R}} &= +1, & S_3^{\text{H,L}} &= -1. \end{aligned} \quad (20)$$

The reason for the names “symmetric” and “antisymmetric” is apparent from Fig. 20. A nonzero α phase shift (Figs. 20a and b) turns circular polarization into elliptical polarization for which both helicities have the same major and minor axes, i.e., the phase shift affects the two polarization ellipses symmetrically. A nonzero Δ

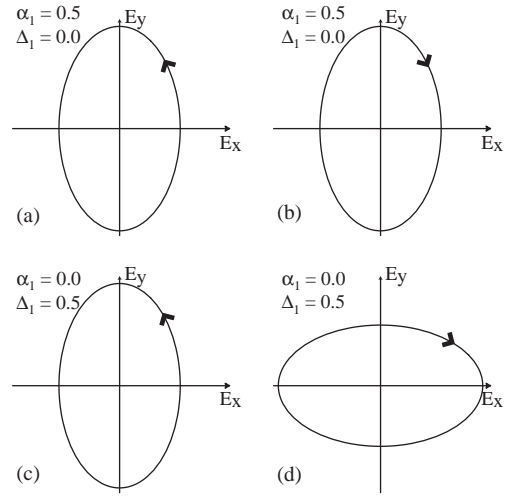


Fig. 20. (a) and (b) Polarization ellipses generated for right- and left-helicity light, respectively, allowing α_1 to be nonzero. (c) and (d) Polarization ellipses generated for right- and left-helicity light, respectively, allowing Δ_1 to be nonzero. In each case, the other phases in Eqs. (19) are set to zero. The arrows indicate the direction of increasing time.

phase (Figs. 20c and d), however, results in elliptical polarization for which the two polarization ellipses have their major and minor axes interchanged, an antisymmetric behavior.

The parameterization given in Eqs. (19) gives a completely general description of the elliptical polarization reaching the cathode, where additional phase shifts from components downstream of the CP and PS cells (providing they impose unitary transformations on the polarization vector) can be included as additional contributions to the α 's and Δ 's. Two special cases, the addition of a slightly birefringent optic and the addition of an imperfect half-wave plate, are discussed below in Section 4.4; in those cases we separate out from the α 's and Δ 's the contributions made by those optics in order to make explicit the helicity-correlated effects they induce.

Before calculating A_1 , we can argue that to first order, only the antisymmetric phase shifts Δ_1 and Δ_2 contribute to it. From Eqs. (20), we see that $S_1^{\text{R}} - S_1^{\text{L}} = -2\Delta_1$ and $S_2^{\text{R}} - S_2^{\text{L}} = -2\Delta_2$. The helicity-correlated difference in the amount of linear polarization depends solely on the antisymmetric phases. That this can give rise to A_1 can be seen by

considering again the ellipses in Fig. 20. If one imagines that the polarization ellipses are propagated through an asymmetric transport element with greater transmission along the vertical axis than the horizontal, it is clear that the ellipses with symmetric phase shifts are transmitted with equal intensity while the ellipses with antisymmetric phase shifts are not.

Finally, we insert Eqs. (19) into Eq. (18) and calculate A_1 . We use the small-angle approximation and only keep terms that are first order in phase shifts and first order in ε :

$$\begin{aligned} A_1 &= \frac{I(\delta_{\text{CP}}^{\text{R}}, \delta_{\text{PS}}^{\text{R}}) - I(\delta_{\text{CP}}^{\text{L}}, \delta_{\text{PS}}^{\text{L}})}{I(\delta_{\text{CP}}^{\text{R}}, \delta_{\text{PS}}^{\text{R}}) + I(\delta_{\text{CP}}^{\text{L}}, \delta_{\text{PS}}^{\text{L}})} \\ &= -\frac{\varepsilon}{T} [(\Delta_1 - \Delta_1^0) \cos 2\theta \\ &\quad + (\Delta_2 - \Delta_2^0) \sin 2\theta]. \end{aligned} \quad (21)$$

We allow that residual birefringence in the Pockels cells or the optics downstream of them may introduce offsets by including the terms Δ_1^0 and Δ_2^0 . Note that birefringence in downstream optics can only contribute antisymmetric (Δ -type) phase shifts. The formalism above assumes that the asymmetric transport element is a component of the optical system. Examples would include any optical element that is not exactly normal to the beam. However, Eq. (21) remains valid if the optical analyzing power is replaced by a cathode with a QE anisotropy. The strained GaAs cathodes in use at SLAC provide the dominant analyzing power in the system.

4.2. PITA slopes

Note that A_1 depends linearly on the two antisymmetric phase shifts, Δ_1 and Δ_2 . This allows us to define two ‘‘PITA slopes’’ m_1 and m_2 that are easily measurable and characterize the sensitivity to residual linear polarization of a given optical system and analyzer. The PITA slopes play a central role in our techniques for minimizing beam A_{LR} 's. In practice, it is convenient to express the asymmetry formula in terms of these obser-

ables:

$$\begin{aligned} m_1 &= -\frac{\varepsilon}{T} \cos 2\theta, \\ m_2 &= -\frac{\varepsilon}{T} \sin 2\theta, \\ A_1 &= m_1(\Delta_1 - \Delta_1^0) + m_2(\Delta_2 - \Delta_2^0). \end{aligned} \quad (22)$$

The phases Δ_1 and Δ_2 can be converted to voltages using Eq. (4). By adjusting the voltages on the CP and PS cells in an antisymmetric fashion, one can adjust the size of either the Stokes 1 or the Stokes 2 components, and thus the size of A_1 . For instance, suppose one optimizes the laser circular polarization after the PS cell (using the HF to maximize or minimize the transmitted light) and finds that the CP cell voltages should initially be set to $V_1^{\text{R}} = +2700$ V and $V_1^{\text{L}} = -2700$ V. To measure the CP cell's PITA slope, one applies offset voltages Δ_1 and measures the resulting A_1 as shown in Fig. 21. For $\Delta_1 = +200$ V, we have $V_1^{\text{R}} = +2900$ V and $V_1^{\text{L}} = -2500$ V in this example. Once the PITA slopes are measured and A_1 is measured for $\Delta_1 = \Delta_2 = 0$, offset voltages for Δ_1 and Δ_2 can be applied to null A_1 . This procedure is further described in Section 5.

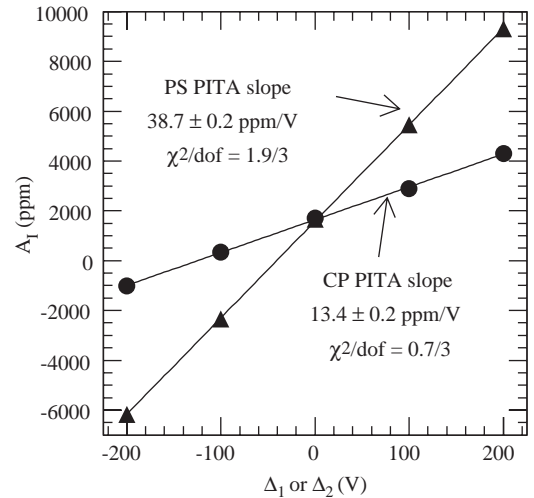


Fig. 21. PITA slopes for both the CP and PS cells from T-437. Slopes are plotted in terms of ppm of intensity asymmetry per volt of antisymmetric offset voltage applied to the Pockels cells and are typical values for strained GaAs cathodes. Reprinted from Ref. [9].

4.3. Spatial variation of birefringence

We have seen that A_I is directly proportional to $\Delta_1 - \Delta_1^0$ and $\Delta_2 - \Delta_2^0$. We have assumed that if an optical element introduced a phase shift Δ , the phase shift is the same regardless of the point on the face of the element through which the light passed. However, it is possible for the birefringence to vary across the face of the optical element. If we allow that the residual birefringences Δ_1^0 and Δ_2^0 may have a spatial dependence to them, then it follows that A_I also has a spatial dependence. A spatially varying A_I opens the possibility of higher-order helicity-correlated

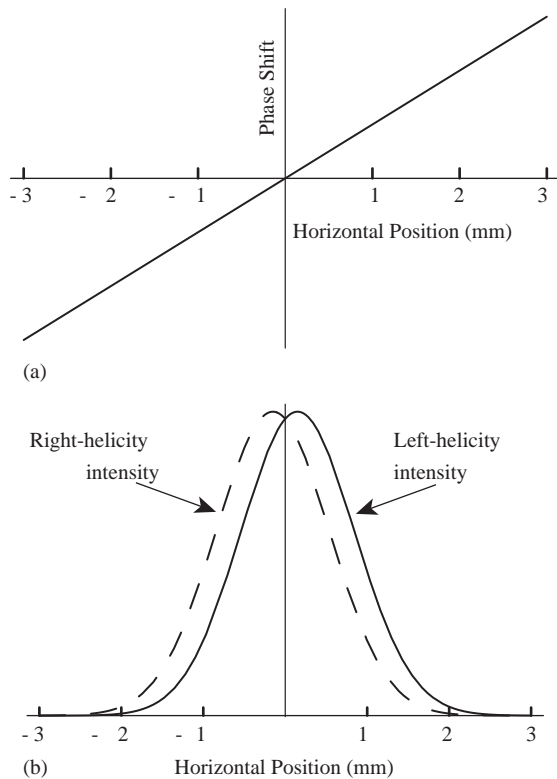


Fig. 22. Demonstration of the effect of a linear gradient in the phase across the face of the laser beam on the resulting spatial intensity profile of the electron beam. (a) The linear gradient in phase, exaggerated to demonstrate the effect. (b) The resulting intensity profiles for right- and left-helicity electron beams, assuming the incident laser beam had a gaussian profile. The gradient shifts the centroids of the right- and left-helicity beams in opposite directions, generating a helicity-correlated position difference.

asymmetries. For instance, a laser beam with a Δ_1^0 varying linearly in x as in Fig. 22a produces an electron beam with a linearly varying A_I . This variation has the effect of shifting the centroids of the right- and left-helicity electron beams in opposite directions as illustrated in Fig. 22b and yields an electron beam with a helicity-correlated horizontal position difference. Such effects are certainly present in the Pockels cells and are likely present at some level in the downstream optics as well.

A spatially varying Δ retardation is one of the dominant sources of higher-order (position, spot size, and spot shape) helicity-correlated asymmetries in the spatial profile of the electron beam. A convenient way to characterize the spatially varying phase shift is via “moments” similar to the moments of a statistical distribution. Each moment can then be connected to a particular A_{LR}^{beam} . The zeroth moment (the average phase shift across the beam) gives rise to A_I . The first moment is related to the gradient in phase shift across the beam and gives rise to $D_{X(Y)}$. The second moment is related to the curvature of the phase shift across the beam and gives rise to spot size differences. Similarly, higher-order moments can be related to higher-order helicity-correlated asymmetries in the beam profile. Note from Eq. (22) that the sensitivity of the electron beam to spatial variations in Δ_1^0 and Δ_2^0 scales with m_1 and m_2 , respectively. We discuss characterizing and minimizing such effects further in Section 5.1.2.

4.4. Vacuum window birefringence and half-wave plate cancellation

As we consider how to suppress A_{LR}^{beam} 's arising from residual linear polarization, it is useful to separate out of the offset terms Δ_1^0 and Δ_2^0 the contributions that arise from the insertable half-wave plate used for slow helicity reversal and the vacuum window at the entrance to the polarized electron gun. The vacuum window possesses a significant stress-induced birefringence and is unavoidably downstream of the half-wave plate and the Asymmetry Inverter, making it difficult to arrange cancellations of helicity-correlated asymmetries that arise from it. For the remainder of the paper, we redefine Δ_1^0 and Δ_2^0 to

exclude the residual birefringence associated with the vacuum window and the insertable half-wave plate, each of which we consider separately. We model the vacuum window as a retardation plate with a small retardation β and an arbitrary orientation angle ρ measured from the horizontal axis. The vacuum window can then be represented as

$$J_{\text{VW}} = \begin{bmatrix} \cos^2 \rho + e^{i\beta} \sin^2 \rho & (1 - e^{i\beta}) \sin \rho \cos \rho \\ (1 - e^{i\beta}) \sin \rho \cos \rho & \sin^2 \rho + e^{i\beta} \cos^2 \rho \end{bmatrix}. \quad (23)$$

The final electric field vector including the vacuum window is

$$\vec{E}_f = J_{\text{AT}} \cdot J_{\text{VW}} \cdot J_{\text{PS}} \cdot J_{\text{CP}} \cdot \vec{E}_i. \quad (24)$$

The vacuum window contribution, having been separated out of A_1^0 and A_2^0 , manifests itself as a third term in the asymmetry equation:

$$A_I = -\frac{\varepsilon}{T} [(A_1 - A_1^0) \cos 2\theta + (A_2 - A_2^0) \sin 2\theta + \beta \sin(2\theta - 2\rho)]. \quad (25)$$

Next we consider the insertion of the half-wave plate used for slow helicity reversal, as discussed in Sections 3.1.3 and 5.4.1. Here we focus on how the half-wave plate manipulates residual linear polarization. We want to understand to what degree a cancellation of position and spot size differences can be achieved if they arise from spatial variations in the residual birefringence of particular optical elements.

We assume that downstream of the PS cell we have an imperfect half-wave plate followed by the vacuum window. The half-wave plate is allowed an arbitrary orientation ψ and a deviation γ from perfect half-wave retardation and can be represented as

$$J_{\text{HW}} = \begin{bmatrix} \cos^2 \psi + e^{i(\pi+\gamma)} \sin^2 \psi & (1 - e^{i(\pi+\gamma)}) \sin \psi \cos \psi \\ (1 - e^{i(\pi+\gamma)}) \sin \psi \cos \psi & e^{i(\pi+\gamma)} \cos^2 \psi + \sin^2 \psi \end{bmatrix}. \quad (26)$$

The final electric vector is calculated as

$$\vec{E}_f = J_{\text{AT}} \cdot J_{\text{VW}} \cdot J_{\text{HW}} \cdot J_{\text{PS}} \cdot J_{\text{CP}} \cdot \vec{E}_i, \quad (27)$$

and the resulting intensity asymmetry is

$$A_I = -\frac{\varepsilon}{T} [(A_1 - A_1^0) \cos(2\theta - 4\psi) - (A_2 - A_2^0) \sin(2\theta - 4\psi) - \beta \sin(2\theta - 2\rho) - \gamma \sin(2\theta - 2\psi)]. \quad (28)$$

We compare this result to Eq. (25), bearing in mind that the coefficients multiplying each term (A_1^0 , A_2^0 , β , and γ) may have a spatial dependence that could give rise to helicity-correlated position or spot size differences. Comparing the first two terms of each equation, which include the contributions of all optics upstream of the half-wave plate, we see that they have acquired both a relative minus sign and a dependence on the orientation of the half-wave plate. We gain some freedom to choose the PITA slopes by appropriately orienting the half-wave plate, but their values cannot be chosen independently. The optimal cancellation of position and spot size differences would be gained by inserting the half-wave plate in an orientation such that the PITA slopes are unchanged, but the relative minus sign prevents that. However, if one can arrange for one PITA slope to be much larger in magnitude than the other, then one can orient the half-wave plate to preserve the large PITA slope and perhaps still achieve a reasonable cancellation of effects arising from the upstream optics. Unfortunately, this procedure requires control over the orientation of the cathode’s analyzing power and such control is impractical.

Comparing the third terms of Eqs. (25) and (28), we see that the vacuum window contribution flips sign with insertion of the half-wave plate. The sign flip prevents any cancellation of $A_{\text{LR}}^{\text{beam}}$ ’s arising from optics downstream of the half-wave plate, motivating us to place the half-wave plate as far downstream as possible.

The half-wave plate itself introduces a fourth term that is proportional to the deviation of its retardation from π . To the extent that this term is significant, it poses an obvious problem for arranging a cancellation.

In summary, higher-order effects are not preserved but change in a complex way with insertion of the half-wave plate, resulting in a decrease in the amount of cancellation. One further strategy that

can be pursued is to measure ${}^{\text{beam}}A_{\text{LR}}$'s for a number of half-wave plate orientations and empirically determine which provides the best cancellation, but again this is not feasible because the half-wave plate is not readily accessible. None of these complications pose a problem for minimizing A_{I} , however: one simply measures the new PITA slopes and adjusts Δ_1 and Δ_2 accordingly as is discussed more later.

A second option for using a half-wave plate insertion to generate a slow helicity reversal is to insert the half-wave plate between the Clean-up Polarizer and the CP cell. By inserting the half-wave plate with its fast axis at 45° to the horizontal, the initial linear polarization is rotated from horizontal to vertical and the sense of the circular polarization generated by the CP cell is reversed. The half-wave plate matrix for this case is given by Eq. (26) with $\psi = 45^\circ$. The final electric vector is calculated as

$$\vec{E}_f = J_{\text{AT}} \cdot J_{\text{VW}} \cdot J_{\text{PS}} \cdot J_{\text{CP}} \cdot J_{\text{HW}} \cdot \vec{E}_i, \quad (29)$$

and A_{I} becomes

$$A_{\text{I}} = -\frac{\varepsilon}{T} [-(\Delta_1 - \Delta_1^0) \cos 2\theta - (\Delta_2 - \Delta_2^0) \sin 2\theta - \beta \sin(2\theta - 2\rho) + \gamma \cos 2\theta]. \quad (30)$$

The upstream half-wave plate inverts the sign of each of the first three terms relative to Eq. (25).

Using the half-wave plate in this configuration is guaranteed to flip the sign of any ${}^{\text{beam}}A_{\text{LR}}$'s arising from spatial variation in birefringence; no cancellation is gained. We choose to use a half-wave plate placed as far downstream as possible, immediately before the vacuum window on the polarized gun, to gain the best cancellation possible, accepting that the cancellation is imperfect.

4.5. Additional sources of ${}^{\text{beam}}A_{\text{LR}}$'s

In this section we review other possible mechanisms for generating ${}^{\text{beam}}A_{\text{LR}}$'s which we have identified. Table 4 summarizes mechanisms for generating ${}^{\text{beam}}A_{\text{LR}}$'s. The first two rows of the table summarize the effects discussed in the bulk of this section; the remaining rows are discussed briefly below.

4.5.1. Steering/lensing

Studies of helicity-correlated asymmetries arising from the helicity-flipping Pockels cell were made in preparation for the Bates ^{12}C experiment [23]. They clearly demonstrated that the Pockels cell produced helicity-correlated lensing or steering differences and that imaging could be used to suppress these differences. While exhaustive studies of helicity-correlated lensing and steering

Table 4

Sources of ${}^{\text{beam}}A_{\text{LR}}$'s. The second column indicates which ${}^{\text{beam}}A_{\text{LR}}$'s can be affected (intensity asymmetry I, position (and angle) difference P, spot size difference S, or energy asymmetry E) and the third column indicates the relative importance of this effect for the SLAC source. The fourth and fifth columns indicate if some cancellation of the effect is achieved by toggling the half-wave plate or the Asymmetry Inverter optics

Effect	${}^{\text{beam}}A_{\text{LR}}$'s	Significance	$\lambda/2$ Cancel	AI Cancel
Residual linear polarization coupling to QE anisotropy ^a	I	Dominant	NO	NO
Birefringence Gradients	PS	Dominant	Complex	Position YES
Steering/lensing	PS	Large	YES	Position YES
Beam loading	E	Large	NO	NO
Collimation and spot size	IPS	Medium	Complex	Position YES
QE Anisotropy gradients	PS	Medium	NO	NO
QE Gradient	I	Small	Unknown	Unknown
Electronic Cross Talk	IPSE	Small	YES	NO
Etalon	I	Negligible	NO	NO

^aThe coupling between residual linear polarization in the laser beam and the cathode QE anisotropy results in the dominant contribution to A_{I} . It is also a dominant source of position and spot size differences and of the energy asymmetry via spatial gradients and beam loading (listed separately).

differences have not yet been carried out on the SLAC system, we use a similar model of Pockels cell and have seen significant evidence for the presence of such effects in a variety of measurements. Uncontrolled, we suspect that they have the potential to contribute to $^{\text{beam}}A_{\text{LR}}$'s at a level comparable to or even greater than birefringence gradients. We estimate that by imaging the CP cell to the cathode we have reduced the effective lever arm from ~ 25 m to ~ 30 cm, thereby strongly suppressing any helicity-correlated lensing or steering differences that may be present. While it is difficult to untangle the relative contributions of lensing and birefringence gradient effects, we believe that imaging has suppressed lensing sufficiently that it is comparable to or smaller than the birefringence gradient effects. When we have isolated effects that can be interpreted as lensing in laser beam measurements, we have observed that the effects cancel with the half-wave plate insertion. In addition, we expect that the Asymmetry Inverter also provides a cancellation of position differences.

4.5.2. Beam loading

The primary mechanism for introducing a helicity-correlated energy asymmetry, A_E , into the electron beam is through “beam loading”. The electrons early in a pulse absorb power from an accelerating cavity as it accelerates them. Electrons later in the pulse therefore find less power available to accelerate them. If the electron pulse's temporal profile were flat, the later electrons would be accelerated less, creating an energy spread along the length of the pulse. In addition, a further time dependence to the power available for acceleration is imposed by the time structure of the RF voltage applied to the cavities. We compensate for this beam-loading effect and the curvature of the applied RF voltage by shaping the laser pulse's intensity profile with TOPS as described in Section 2.2. The optimal temporal profile is sloped, with its intensity decreasing with time. The average beam loading (over the length of the pulse) is 5%, and the energy spread is reduced to 0.1% by the pulse shaping and other accelerator tuning techniques [19]. Beam loading introduces an anticorrelation between the intensity and the

energy of the beam: we would expect that the 0.5% intensity jitter during 2002 Physics Run I should drive an energy jitter of 0.025%. The energy jitter was typically measured to be 0.03% during the run. To the extent that the jitter in the beam energy is in fact driven by jitter in the beam intensity, A_E tracks A_I and benefits from the performance of the IA feedback loop described below. If we achieve our goal of $A_I < 2 \times 10^{-7}$ then we should also achieve our goal of $A_E < 2 \times 10^{-8}$, providing other mechanisms do not contribute significantly.

4.5.3. Collimation and Spot Size at CP and PS Cells

As discussed in Section 3.1.2, a converging or diverging laser beam traversing a Pockels cell can acquire a gradient in its retardation, leading to helicity-correlated position or shape differences similar to those produced by a birefringence gradient. Placing a beam waist at the CP and PS cells reduces the correlation between position and angle, suppressing these effects. Increasing the beam diameter also reduces this effect but increases the sensitivity to birefringence-gradient effects. We compromise by placing a beam waist at the CP and PS cells with a size of 1 mmrms.

4.5.4. QE Anisotropy gradients

Since we have observed that spatial variations in Δ_1 and Δ_2 lead to significant helicity-correlated position and spot size differences, it is natural to ask whether similar effects can arise from spatial variations in the other parameters of Eq. (21), the analyzing power ε/T and the analyzer orientation θ . We speculate that the physical mechanism underlying the observation that position differences depend on the choice of Δ_1 and Δ_2 (Section 5.1.1) might be a manifestation of such variations. If this is the case, then we can say that gradients in the cathode strain are a noticeable effect but clearly not the dominant effect in the SLAC system. It is likely that suppressing Δ_1 and Δ_2 also suppresses $^{\text{beam}}A_{\text{LR}}$'s arising from these variations.

4.5.5. QE Gradients

If the cathode's QE varies across its surface, helicity-correlated position differences can generate an intensity asymmetry. This effect is believed

to be small for the SLAC source, where the QE typically varies across the cathode by less than a factor of two over the illuminated region (~ 1 cm diameter) and position differences at the cathode are typically < 2 μm .

4.5.6. Electronic cross talk

Electronic cross talk between various necessary helicity-correlated signals and the DAQ can cause a mismeasurement of $^{\text{beam}}A_{\text{LR}}$'s and the detector asymmetry. Cross talk can be caused by coupling between either the transmission of the polarization state information or the high voltage pulse applied to the CP cell (which acts as an antenna) and ground loops in the DAQ. The DAQ was carefully designed to avoid ground loops and we take the steps described in Section 3.3 to eliminate the polarization-state information as a problem. Any residual effects are sensitive to cancellation by the half-wave plate.

4.5.7. Etalon effects

Certain bench studies we conducted using an unwedged Pockels cell led us to consider the possibility that a Pockels cell with parallel faces can behave as a Fabry-Perot etalon. A careful analysis of such a system reveals that it is capable of producing rather large intensity asymmetries (as large as 10^{-3} for a Pockels cell without AR coatings) on the laser beam, provided that the line width of the laser beam is small compared to the free spectral range of the Pockels cell etalon (~ 3 GHz). This, however, proves not to be the case for the SLAC system, for which the Flash:Ti laser has a line width of ~ 300 GHz.

The mechanisms for generating $^{\text{beam}}A_{\text{LR}}$'s that are most important for the SLAC source are QE anisotropy coupling to residual birefringence and birefringence gradients, steering/lensing effects, and beam loading. When no effort is made to control them, at the cathode these effects lead to a charge asymmetry on the order of 1000 ppm and position differences on the order of several microns. The next section discusses how we control these effects.

It is worth noting here that while these particular mechanisms are the most important at SLAC, they may not be the same as those that

dominate for other sources. Particular properties of the SLAC source that may influence which mechanisms are important include the particular model of Pockels cell in use (Cleveland Crystals QX2035), the particular cathode used (strained GaAs for T-437 and the 2001 engineering run; gradient-doped strained GaAsP for 2002 Physics Run I), the long physical distance between the polarization optics and the cathode (~ 25 m), the large diameter of the laser spot on the cathode (1 cm $1/e^2$ diameter), and the sensitivity of the accelerator to beam loading.

5. Minimization of $^{\text{beam}}A_{\text{LR}}$'s

We have adopted a number of strategies for designing the polarized source optics system that are specifically aimed at minimizing $^{\text{beam}}A_{\text{LR}}$'s. Passive strategies include careful selection and setup of the CP and PS Pockels cells, imaging of the CP cell onto the cathode, and shaping of the laser pulse's temporal profile to compensate for beam-loading effects (discussed in Section 4.5.2). Active strategies include feedbacks on A_I and $D_{X(Y)}$. Finally, introducing slow reversals of helicity-correlated asymmetries with respect to the physics asymmetry generates cancellations and provides a tool for studying systematic errors. Each of these strategies is described in detail in the following subsections. We finish this section by presenting results on the control of helicity-correlated asymmetries from T-437.

We are motivated to minimize $^{\text{beam}}A_{\text{LR}}$'s via passive means as well as possible before using active feedbacks for two reasons. First, an active feedback on a particular $^{\text{beam}}A_{\text{LR}}$ can generate helicity-correlated asymmetries in other $^{\text{beam}}A_{\text{LR}}$'s as a side effect. Second, minimizing the $^{\text{beam}}A_{\text{LR}}$'s we can control is also likely to suppress higher-order $^{\text{beam}}A_{\text{LR}}$'s that we cannot directly control and for which we have no active feedbacks. Another strategy is to monitor the higher-order moments of the electron beam's spatial intensity profile. We are able to measure the beam's spatial intensity profile with a wire array located just upstream of the E-158 target. These measurements allow us to determine whether higher-order

beam A_{LR} 's are present in the electron beam at a significant level.

5.1. Optimizing the CP and PS cells and the laser beam polarization

We optimize the CP and PS cells by selecting them for uniformity of retardation, orienting them relative to the beam carefully, setting their voltages to maximize the circular polarization after the PS cell, and then adjusting their voltages to minimize A_I on the electron beam. The basic setup of the polarization optics is discussed in Section 3.1. Here we discuss those aspects of the setup that are specifically related to suppressing A_{LR} 's.

5.1.1. Measuring the PITA slopes and correcting the intensity asymmetry

As was discussed in Section 4.2, the PITA slopes characterize the sensitivity of a particular optical system and cathode to the presence of small linear polarization components and provide a key tool for minimizing A_I . We determine the PITA slope for the CP cell by first measuring A_I on the electron beam as we vary Δ_1 in five steps over the range ± 200 V (or $\sim \pm 7^\circ$, see Eq. (4)) and then fitting a line to the resulting data. Similarly varying Δ_2 yields the PS cell PITA slope. The PITA slopes

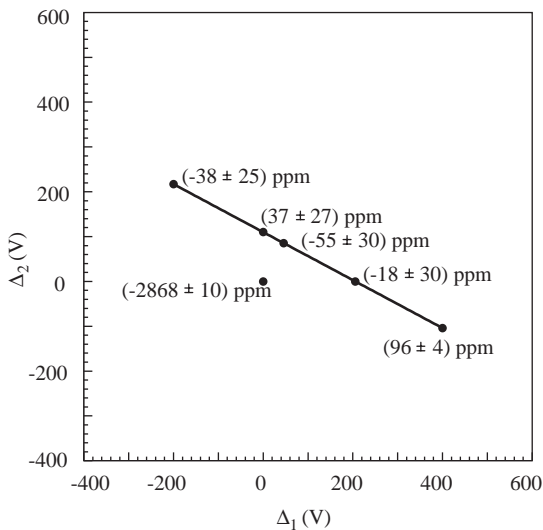


Fig. 23. Electron beam intensity asymmetry measured along the $A_I = 0$ line and at $A_1 = A_2 = 0$.

for T-437 are shown in Fig. 21. We can then define a “voltage space” representing a two-dimensional plane whose x - and y -axes correspond to Δ_1 and Δ_2 . Considering again Eq. (22), we see that if we set the left-hand-side equal to zero, we define a line in this voltage space along which the intensity asymmetry is zero, the “ $A_I = 0$ line.” As was discussed in Section 3, the voltages determined for the CP and PS cells using the Helicity Filter need to be adjusted to compensate for phase shifts in the optics downstream of them. This adjustment is equivalent to moving onto the $A_I = 0$ line. The $A_I = 0$ line can be clearly seen in Fig. 23. These data were taken in the Gun Test Laboratory (on a different cathode than those used for the E-158 runs), which reproduces the first several meters of the accelerator. The point of large A_I at the origin is the intensity asymmetry measured using the nominal voltages determined via the Helicity Filter. Its value of -2868 ppm is typical and is due to a combination of alignment and voltage errors and birefringence in the vacuum window. We have to choose a particular point on the line as optimal, and our strategy is to move toward the $A_I = 0$ line in a perpendicular fashion in order to change the laser beam polarization by the minimum amount necessary to zero A_I . The required Δ_1 and Δ_2 are then determined by

$$\Delta_1 = -\frac{A_I \cdot m_1}{m_1^2 + m_2^2}, \quad \Delta_2 = -\frac{A_I \cdot m_2}{m_1^2 + m_2^2} \quad (31)$$

where A_I is the measured intensity asymmetry that needs to be corrected. This procedure allows us to reduce the intensity asymmetry below 100 ppm as part of the passive setup.

We verify that this is a good choice of voltages by performing a similar scan of Δ_1 and Δ_2 and showing that the voltages which maximize the electron beam’s polarization agree with those found by using Eqs. (31). This check requires that the electron beam can be brought into End Station A in order to use the Møller polarimeter located there. Fig. 24 shows an example of such a study. In Fig. 24, the electron beam polarization is measured as a function of Δ_2 , with $\Delta_1 = 0$. The peak polarization is found to be at an offset voltage of $\Delta_2 = (-15 \pm 32)$ V, which is consistent with the values found by using Eq. (31) to move onto the

$A_1 = 0$ line. Table 5 summarizes typical operating voltages for the CP and PS cells as measured with the HF scans and after either using the PITA slopes to null A_1 or using the Møller polarimeter to measure the peak electron beam polarization.

It is also interesting to note that the position differences are typically sensitive to the choice of location along the $A_1 = 0$ line, as demonstrated in Fig. 25. These data were taken in the Gun Test Laboratory concurrent with the data shown in Fig. 23. Here, D_X and D_Y are plotted as a function of Δ_1 , with Δ_2 correspondingly set to null A_1 . The physical mechanism underlying this behavior is not understood, although the sensitivity of position differences to the choice of Δ_1 and Δ_2 has been observed to depend on the ratio of m_1 to m_2 and on the choice of cathode. One possibility is that this observation is caused by variations in the magnitude or orientation of the analyzing power across the face of the cathode (QE anisotropy

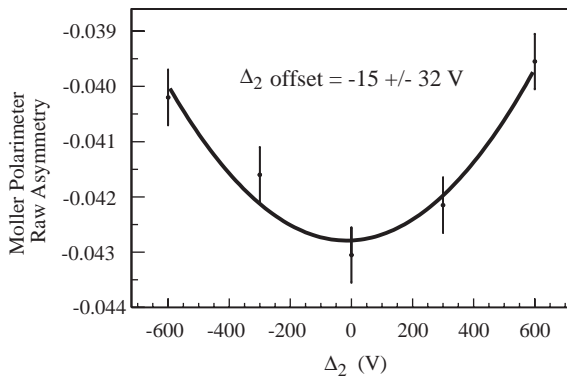


Fig. 24. Electron beam polarization as a function of PS cell offset Δ_2 . The CP cell offset $\Delta_1 = 0$ V. A parabola is fit to the data to approximate the $\cos(\pi \cdot \Delta_2 / V_{\lambda/2})$ dependence for $\Delta_2 \ll V_{\lambda/2}$.

gradients). In most cases, the dependence of $D_{X(Y)}$ on the choice of Δ_1 and Δ_2 was observed to be too small to provide a useful tool for minimizing $D_{X(Y)}$. This fact also suggests that the mechanism which gives rise to this dependence is not one of the dominant mechanisms for generating beam A_{LR} 's in the SLAC system.

5.1.2. Selection and setup of Pockels cells

The presence of spatially varying residual birefringence in the Pockels cells makes the selection of the Pockels cells and the setup of the beam through them important for suppressing

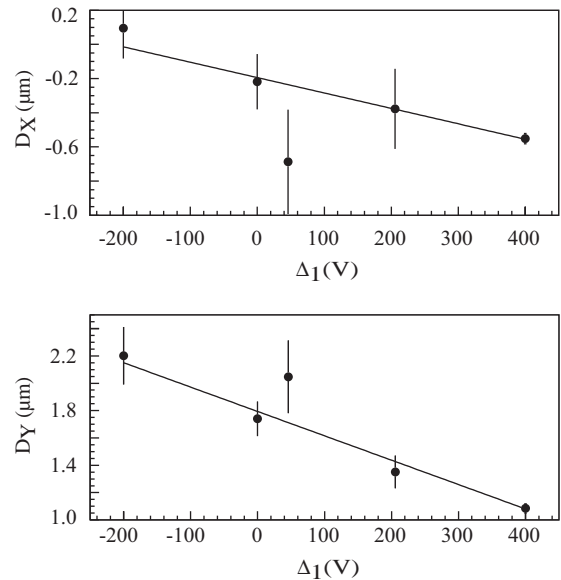


Fig. 25. Electron beam position differences as a function of Δ_1 as Δ_1 and Δ_2 are simultaneously adjusted to slide along the $A_1 = 0$ line.

Table 5

Typical operating voltages for the CP and PS cells for production of right- and left-helicity light for E-158 2002 Physics Run I

	CP Right	CP Left	PS Right	PS Left
HF Scan	2607 V	-2732 V	-5 V	-9 V
$\lambda/2$ OUT Null IA	2574	-2765	-5	-9
$\lambda/2$ OUT Polarimeter	2582 ± 40	-2757 ± 40	-20 ± 32	-24 ± 32
$\lambda/2$ IN Null IA	2736	-2603	-105	-109
$\lambda/2$ IN Polarimeter	2667 ± 39	-2672 ± 39	-159 ± 35	-163 ± 35

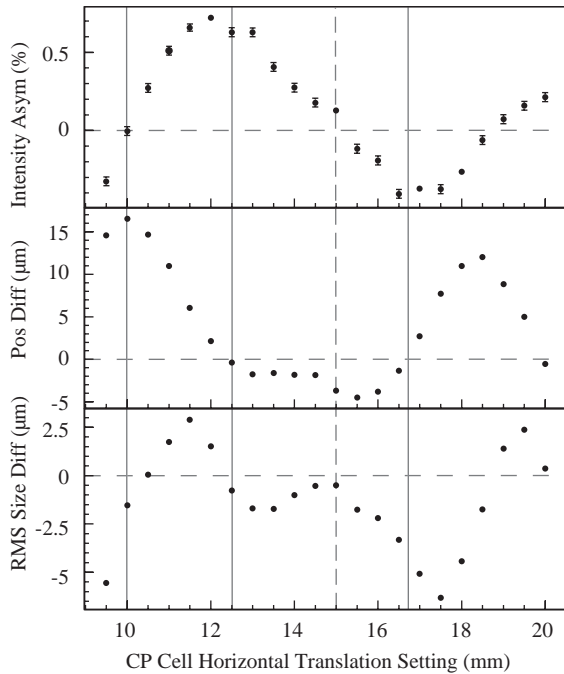


Fig. 26. (a) The helicity-correlated intensity asymmetry measured on the laser beam as a function of the Pockels cell's position as the Pockels cell is translated horizontally and the laser beam remains stationary. (b) Laser spot horizontal position difference vs. Pockels cell position. (c) Laser spot horizontal size difference vs. Pockels cell position. The dashed vertical line indicates the position at which the laser beam is centered on the Pockels cell. The solid vertical lines mark positions discussed in the text.

helicity-correlated position and spot size differences. We studied the residual birefringence in six QX2035 and one QX1020 Pockels cells and found that the peak-to-peak change in the residual birefringence across them varied between ~ 1.5 and 7 nm, depending on the Pockels cell. A typical study of a Pockels cell, made in the Gun Test Laboratory, is shown in Fig. 26. The measurements are made by placing a linear polarizer immediately after the Pockels cell in order to maximize the analyzing power.¹⁵ By orienting the

polarizer at 45° to the Pockels cell's fast axis, we gain maximum sensitivity to variations in its residual birefringence. The beam is detected by a linear array photodiode.¹⁶ Twelve elements in the central portion of the array are instrumented, alternating instrumented and uninstrumented elements, providing a total detection area of $6.45 \text{ mm} \times 6.44 \text{ mm}$ with 50% coverage. The resulting signals are analyzed to determine the helicity-correlated intensity asymmetry and, along a single axis, the helicity-correlated position and spot size differences. The position difference is obtained by computing the weighted mean of the position for each helicity according to $\bar{x}^{\text{R(L)}} = \sum_i (I_i^{\text{R(L)}} x_i^{\text{R(L)}}) / \sum_i I_i^{\text{R(L)}}$ where x_i is the position of the i th element and $I_i^{\text{R(L)}}$ is the intensity measured by the i th element for right- (left-) helicity pulses. The spot size difference is similarly calculated as the difference between the *rms*'s for right- and left-helicity pulses. The detector can be rotated by 90° to measure position and spot size differences along the other axis. The detector is placed immediately after the polarizer in order to minimize the lever arm over which helicity-correlated lensing or steering differences can operate.

For the particular study shown in Fig. 26, the polarizer was oriented to transmit vertically polarized light (yielding a PITA slope $m_1 = 550 \text{ ppm/V}$), the PS cell was removed, and the laser beam had a sigma of 1 mm. The laser beam remained fixed in position while the CP cell was translated horizontally. The three plots in Fig. 26, from top to bottom, show the intensity asymmetry, horizontal position difference, and horizontal size difference on the laser beam as a function of the horizontal position of the CP cell. Based on the analysis given in Section 4, we interpret the variation in the intensity asymmetry as a spatial variation in the magnitude of the CP cell's residual birefringence. The peak-to-peak variation in the intensity asymmetry of 1.1% corresponds to a peak-to-peak variation in the phase shift of 1.5 nm, consistent with the expected level of residual birefringence variation for this model of Pockels cell. There is a clear though imperfect correlation between the slope of the

¹⁵In the case of a polarizer, the asymmetry expression must be modified because the polarizer does not satisfy the assumption $\varepsilon \ll T$. The asymmetry becomes $A_1 = -4\varepsilon T / (\varepsilon^2 + 4T^2) [(A_1 - A_1^0) \cos 2\theta + (A_2 - A_2^0) \sin 2\theta]$.

¹⁶Model A2V-76, UDT Sensors Inc., Hawthorne, CA, USA.

intensity asymmetry curve and the size of the position difference: at a horizontal setting of 10, for instance, the intensity asymmetry reaches its maximal positive slope and the position difference also reaches an extremum. Likewise, the position differences cross through zero at two points, 12.5 and 16.7, where the slope of the intensity asymmetry curve is near zero. A similar imperfect correlation can be identified between the curvature of the intensity asymmetry curve and the size of the spot size difference. For example, the spot size difference reaches extrema of opposite signs at horizontal settings of 11.5 and 17.5, points where the intensity asymmetry exhibits relatively large degrees of curvature of opposite signs.

The $^{\text{beam}}A_{\text{LR}}$'s generated by birefringence gradients scale with the magnitude of the PITA slope; considering typical 18–50 ppm/V PITA slopes arising from the analyzing power of the cathode and taking into account a factor of 2.5 magnification in spot size from the CP cell to the cathode, this Pockels cell would yield position differences as large as 1.3–3.8 μm and spot size differences as large as 0.5–1.5 μm on the electron beam.

We chose the two QX2035 Pockels cells with the smallest gradients in birefringence and least curvature to use as the CP and PS cells. We placed them on two-axis translation stages in order to be able to optimize in situ the points on the crystals through which the laser beam passes. Because the gradients across these two Pockels cells are significantly smaller than those observed on other cells and the cathode used during 2002 Physics Run I has an analyzing power that is a factor of two smaller than the previous cathode, the sensitivity of $^{\text{beam}}A_{\text{LR}}$'s to their translation is significantly reduced. In addition, the contributions to $^{\text{beam}}A_{\text{LR}}$'s from these two Pockels cells are relatively small when they are centered on the beam (similar to the Pockels cell scan shown in Fig. 26). We decided to run with them centered on the beam for 2002 Physics Run I.

5.2. Imaging

As discussed in Section 4.5.1, we image the CP cell onto the cathode to minimize helicity-correlated lensing or steering differences that may arise

from its high-voltage operation. The location of the image point is most sensitive to the setting of the telescope on the Cathode Diagnostics Bench. The downstream lens of that telescope is adjustable in x , y , and z , allowing us to set the beam size and position on the cathode and thereby dictating the location of the object point on the Helicity Control Bench. We replaced the previous $3' \times 1'$ Helicity Control Bench with a $6' \times 1.3'$ bench to allow some freedom of movement to locate the CP cell at the object point. The new cathode described in the introduction gives us additional flexibility to choose the laser spot size on the cathode. Full illumination of the 20-mm-diameter cathode is no longer needed to achieve the required electron beam current. By reducing the spot size to ~ 1 cm for the $1/e^2$ diameter, we place the object point within ~ 30 cm of the CP cell and also improve the electron beam properties and transmission. The remotely insertable 50% mirror at the exit of the Cathode Laser Diagnostics Bench redirects the beam into a diagnostic line that has the same length as the distance between the mirror and the cathode. The Cathode Target provides an image of the beam as it appears on the cathode and is an extremely useful diagnostic, in particular for understanding the imaging of the beam and for measuring the position dependence of the cathode's QE. We determine the location of the object point by placing a wire-mesh screen¹⁷ in the beam near the CP cell and moving it along the beam axis while studying the quality of the image on the Cathode Target. Figs. 27a and b show the quality of the image with the wire mesh placed immediately downstream of the CP cell for the two states of the asymmetry inverter. Fig. 27c shows the quality of the image at the object point, approximately 30 cm from the CP cell. This 30 cm lever arm is a significant reduction from the ~ 25 m actual distance between the CP cell and the cathode. The object point is observed to be the same for both states of the Asymmetry Inverter.

¹⁷ Actually, two wire-mesh screens of differing wire thickness and mesh size.

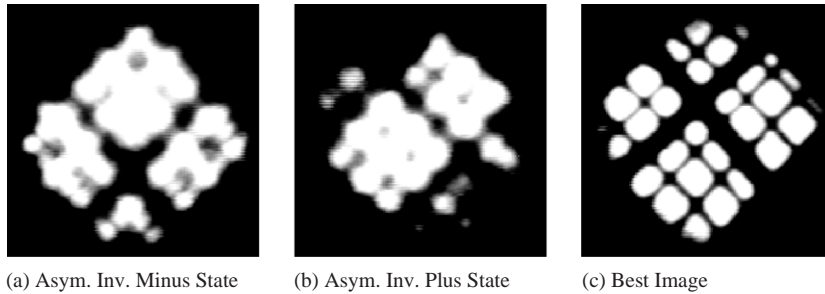


Fig. 27. Quality of imaging of the CP cell for each state of the Asymmetry Inverter and at the optimal location, approximately 30 cm from the CP cell.

5.3. Active feedbacks on $^{\text{beam}}A_{\text{LR}}$'s

Active feedbacks on A_1 and $D_{X(Y)}$ provide additional suppression of these helicity-correlated asymmetries beyond what is achieved by the polarization optimization procedures and imaging. The implementations of the IA, POS, and Phase Feedback loops are described in the following subsections. The hardware for the feedback loops is described above in Section 3.4. First, we outline the general algorithm and discuss $1/N$ scaling. Performance results for the feedback loops from T-437 are discussed in Section 5.5.

The IA and POS loops utilize measurements from low-energy (1-GeV) electron beam diagnostics and act on the laser beam. Additional independent diagnostics at both low and high (45 GeV) energy are used to monitor the performance of the feedback loops and to measure $^{\text{beam}}A_{\text{LR}}$'s at the E-158 target. We choose to generate the measurements for the feedback loops from beam diagnostics at low energy in order to minimize coupling between the various $^{\text{beam}}A_{\text{LR}}$'s as a result of beam loading, residual dispersion, and wakefield effects in the accelerator.

5.3.1. Feedback algorithm and $1/N$ scaling

The feedback loops each require three ingredients: a control device capable of being driven in a helicity-correlated fashion, the optical system and cathode which generate $^{\text{beam}}A_{\text{LR}}$'s, and a set of diagnostic devices on the electron beam to measure $^{\text{beam}}A_{\text{LR}}$'s. The measured beam asymmetry (or difference, in the case of position) can be represented as a sum of the contributions from

each part of the loop,

$$A_{\text{beam}} = A_{\text{ctrl}} + A_{\text{opt}} + A_{\text{stat}}, \quad (32)$$

where A_{ctrl} is the asymmetry induced by the control device, A_{opt} is the helicity-correlated asymmetry caused by the optics and cathode, and A_{stat} is the contribution from statistical jitter in the measured electron beam parameter. The asymmetry is averaged over a “minirun” of M pulse pairs (where each pair consists of one pulse of each helicity) and then a correction is applied on the following minirun according to the general algorithm

$$\begin{aligned} A_{\text{ctrl}}^1 &= 0, \\ A_{\text{ctrl}}^n &= A_{\text{ctrl}}^{n-1} - gA_{\text{beam}}^{n-1}, \end{aligned} \quad (33)$$

where “ g ” is the gain of the loop and “ n ” is the number of the minirun.

An active feedback loop can cause the central value to converge to zero faster than one would naively expect based on a knowledge of the jitter in the measurement and the available statistics. Consider an ideal feedback loop, in which the control device has perfect resolution, a unity gain is chosen, A_{opt} is constant, and the statistical jitter in the beam parameter contributes a noise asymmetry A_{stat} for each minirun. The noise asymmetry contribution has a width σ_{stat} . Then allowing the feedback to run for N miniruns, the algorithm outlined above generates the following

behavior:

$$\begin{aligned}
A_{\text{ctrl}}^1 &= 0, \\
A_{\text{ctrl}}^2 &= A_{\text{ctrl}}^1 - A_{\text{beam}}^1, \\
&= -A_{\text{opt}} - A_{\text{stat}}^1, \\
&\vdots \\
A_{\text{ctrl}}^N &= A_{\text{ctrl}}^{N-1} - A_{\text{beam}}^{N-1}, \\
&= -A_{\text{opt}} - A_{\text{stat}}^{N-1}, \\
\\
A_{\text{beam}}^1 &= A_{\text{ctrl}}^1 + A_{\text{opt}} + A_{\text{stat}}^1, \\
A_{\text{beam}}^2 &= A_{\text{ctrl}}^2 + A_{\text{opt}} + A_{\text{stat}}^2, \\
&= -A_{\text{stat}}^1 + A_{\text{stat}}^2, \\
&\vdots \\
A_{\text{beam}}^N &= A_{\text{ctrl}}^N + A_{\text{opt}} + A_{\text{stat}}^N, \\
&= -A_{\text{stat}}^{N-1} + A_{\text{stat}}^N.
\end{aligned} \tag{34}$$

Averaging the N miniruns then yields

$$\begin{aligned}
\bar{A} &= \frac{1}{N} \sum_{n=1}^N A_{\text{beam}}^n \\
&= \frac{1}{N} (A_{\text{opt}} + A_{\text{stat}}^1 - A_{\text{stat}}^1 + A_{\text{stat}}^2 - \dots \\
&\quad - A_{\text{stat}}^{N-1} + A_{\text{stat}}^N) \\
&= \frac{1}{N} (A_{\text{opt}} + A_{\text{stat}}^N)
\end{aligned} \tag{35}$$

The active nature of the feedback arranges a cancellation of the contributions to the asymmetry arising from statistical jitter for all miniruns except the last. We see that the mean measured asymmetry scales as $(A_{\text{opt}} + A_{\text{stat}}^N)/N$. We refer to this as “ $1/N$ scaling”, in contrast with the normal statistical behavior in the absence of feedback for which the mean measured asymmetry scales as $A_{\text{opt}} + \sigma_{\text{stat}}/\sqrt{N}$.

5.3.2. Intensity asymmetry feedback

The IA loop is responsible for ensuring that A_1 converges to zero and that it does so rapidly enough to meet the requirements of equations (3) within the available statistics. Because the intensity jitter is ~ 0.3 – 1.0% , there are not necessarily enough statistics ($\sim 3 \times 10^8$ pairs) in the experiment to ensure that the final asymmetry meets E-158’s requirement of $A_1 < 2 \times 10^{-7}$, so we require

that the IA loop provide sufficient $1/N$ scaling to achieve this requirement.

The IA Pockels cell controls the loop by introducing into the laser beam a helicity-correlated phase shift which the Cleanup Polarizer transforms into the desired intensity asymmetry correction. The transmission through the Cleanup Polarizer is given by

$$T = \cos^2 \left(\frac{V - V_0^{\text{IA}}}{V_{\lambda/2}^{\text{IA}}} \frac{\pi}{2} \right), \tag{36}$$

where T is the transmission, V_0^{IA} is an offset voltage which arises from residual birefringence or misalignment, and $V_{\lambda/2}^{\text{IA}}$ is the half-wave voltage of the IA cell. We reduce our sensitivity to drifts in V_0^{IA} by running both states nominally at 99% transmission. Doing so also has the effect of reducing the amplitude of helicity-correlated voltage changes. The feedback is initialized with both left and right states at the bias voltage V_B that yields a bias transmission $T_B = 99\%$,

$$\begin{aligned}
A_{\text{IA}}^1 &= 0, \\
V_{\text{R}}^1 &= V_B, \\
V_{\text{L}}^1 &= V_B.
\end{aligned} \tag{37}$$

We apply a correction by increasing the attenuation on the appropriate state according to

$$A_{\text{IA}}^n = A_{\text{IA}}^{n-1} - A_1^{n-1} \tag{38}$$

IF $A_{\text{IA}}^n \leq 0$ THEN

$$V_{\text{L}}^n = V_{\lambda/2} \frac{2}{\pi} \sin^{-1} \left[\left(1 - T_B \frac{1 - A_{\text{IA}}^n}{1 + A_{\text{IA}}^n} \right)^{1/2} \right] + V_0,$$

$$V_{\text{R}}^n = V_B,$$

ELSE

$$V_{\text{L}}^n = V_B,$$

$$V_{\text{R}}^n = V_{\lambda/2} \frac{2}{\pi} \sin^{-1} \left[\left(1 - T_B \frac{1 + A_{\text{IA}}^n}{1 - A_{\text{IA}}^n} \right)^{1/2} \right] + V_0,$$

where A_{IA}^n is the asymmetry induced by the IA loop during minirun n and $V_{\text{R(L)}}^n$ is the voltage applied to the IA cell for right- (left-) helicity pulses to induce that asymmetry. The gain has been set equal to one. The IA cell has a half-wave

voltage of ~ 5800 V and can be driven to 750 V, yielding a range of asymmetry correction on the order of $\pm 3\%$, much larger than the typical induced correction of $(1 - 5) \times 10^{-4}$.

A number of factors limit the $1/N$ scaling we can achieve with the IA loop. The ultimate limiting factor is the finite resolution of the beam current monitors, which in our case is typically 25 ppm/pair, negligible compared to the $\sim 0.5\%$ intensity jitter. The more severe limitation on $1/N$ scaling for our system comes from the fact that while we are running the feedback at 1 GeV, the important measurement of A_1 for the experiment is the one made in front of the E-158 target, two miles downstream. Beam losses in the accelerator can add a new source of intensity jitter at a potentially significant level. We are currently evaluating whether this source of jitter is small enough to allow adequate scaling of A_1 and are considering using a current monitor at 45 GeV for the feedback. In addition, matching the data set used in the offline analysis to that used by the feedback to generate $1/N$ scaling in the online analysis is a solvable but nontrivial challenge. We should also note that to achieve full $1/N$ scaling one must run with a unity gain.

5.3.3. Phase feedback

As is discussed in Section 4, the dominant source of A_1 is the interaction between phase shifts in the optics and the cathode's analyzing power. Phase Feedback refers to a second layer of feedback on A_1 which averages over the IA loop correction for a number of miniruns (typically 30) and then adjusts the CP and PS cell voltages to null the IA loop correction. This procedure provides compensation for drifts in the residual birefringence of the Pockels cells and the optics downstream of them that can cause the IA loop correction to wander at the 100-ppm level. We adjust the CP and PS voltages by an amount proportional to the average asymmetry induced by the IA cell over the last N miniruns, A_{ind} , according to the prescription of Eqs. (31) with A_1 replaced by $-A_{\text{ind}}$. In principle, the Phase Feedback can be used alone to null A_1 , but using two layers of feedback provides flexibility. The IA

loop can be run on a short time scale to take advantage of $1/N$ scaling, while the Phase Feedback can be run on a longer time scale that is appropriate for keeping the IA loop correction small. The IA loop alone typically applies a correction at the 100-ppm level, which is three orders of magnitude larger than the physics asymmetry. The Phase Feedback is capable of reducing the IA loop correction to the few ppm level when averaged over several days.

5.3.4. Position difference feedback

E-158 requires that the helicity-correlated position differences $D_{X(Y)}$ be below 10 nm averaged over several months of data taking. The position differences are typically several microns at the cathode when no effort is made to control them; with various optimizations (choice of Pockels cells, translation of Pockels cells, choice of operating voltages, and imaging) we achieve $D_{X(Y)}$ as small as 0.5–1.0 μm . We also observe approximately an order of magnitude reduction in $D_{X(Y)}$ between the cathode and the E-158 target. This is due in part to a drop in spot size from a 2.5-mm sigma at the cathode to 1 mm at the target. The remainder comes from emittance growth due to synchrotron radiation emission. The emittance growth causes the spot size to increase, and the additional magnetic focusing required further suppresses the phase space available for $D_{X(Y)}$. The goal is to achieve 1–2 orders of magnitude of suppression of $D_{X(Y)}$ from an active feedback system. The position jitter at the E-158 target is typically $\lesssim 50$ μm per pair so it should be possible to achieve a statistical error on $D_{X(Y)}$ of a few nm averaged over the entire run. The statistical error bar will be small enough that additional suppression from $1/N$ scaling is not necessary. We use the POS loop to suppress both $D_{X(Y)}$ and $D_{X'(Y')}$ simultaneously. We can use one feedback on the laser beam to suppress two effects on the electron beam because they are not linearly independent. There should only be position differences at the cathode; angle differences at the E-158 target arise because the cathode is not imaged onto it by the electron beam optics.

The piezomirror is the control device for the POS loop. It is a standard 1-in. diameter mirror

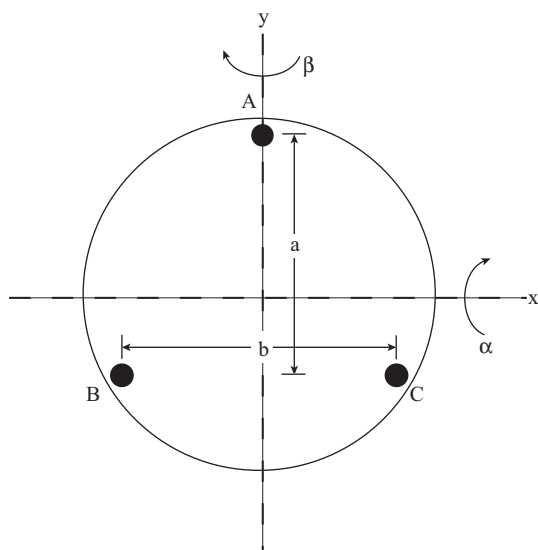


Fig. 28. A schematic of the piezomirror. The points labelled A, B, and C are the three piezo stacks. The geometric factors a ($= 10.4$ mm) and b ($= 12.0$ mm) are relevant for determining the rotation angles α and β about the x - and y -axis, respectively.

attached to a Physik Instrumente model S-311.10¹⁸ piezoelectric mount. A schematic of its operation is shown in Fig. 28. This unit has three piezoelectric stacks that can be pulsed individually up to 100 V. The points A , B , and C represent the three piezo stacks. The independent operation of the three stacks gives the freedom to translate the face of the mount up to $6 \mu\text{m}$, or to tilt in an arbitrary direction by up to $600 \mu\text{rad}$. The angles α and β represent tilt about the x - and y -axis, respectively. Pure tilts about the x - and y -axis can be achieved by applying voltages to A , B , and C according to

$$\alpha = \frac{A - \frac{1}{2}(B + C)}{a},$$

$$\beta = \frac{B - C}{b},$$

$$A + B + C = 0, \quad (39)$$

where A , B , and C are given in millimeters of expansion. The constraint that A , B , and C sum to zero implies that the piezomirror undergoes a pure tilt, with no translation. When the feedback is

initialized, it produces zero correction for the first minirun, and the voltages are set to

$$D_{Xpz}^1 = 0 \text{ nm}, \quad D_{Ypz}^1 = 0 \text{ nm},$$

$$A_L^1 = 0 \text{ V}, \quad B_L^1 = 0 \text{ V}, \quad C_L^1 = 0 \text{ V},$$

$$A_R^1 = 0 \text{ V}, \quad B_R^1 = 0 \text{ V}, \quad C_R^1 = 0 \text{ V}, \quad (40)$$

where D_{Xpz}^1 and D_{Ypz}^1 are the position differences being induced by the POS loop on the first minirun and now $A_{R(L)}^1$, $B_{R(L)}^1$, and $C_{R(L)}^1$ are given in volts. For subsequent miniruns, the induced position differences and piezomirror voltages evolve according to

$$D_{Xpz}^n = D_{Xpz}^{n-1} - D_X^{n-1}, \quad D_{Ypz}^n = D_{Ypz}^{n-1} - D_Y^{n-1},$$

$$A_L^n = -A_R^n = \frac{a}{3l} D_{Ypz}^n \times 1.67 \times 10^4 \text{ (V/mm)},$$

$$B_L^n = -B_R^n$$

$$= \frac{1}{4l} \left(b D_{Xpz}^n - \frac{2}{3} a D_{Ypz}^n \right) \times 1.67 \times 10^4 \text{ (V/mm)},$$

$$C_L^n = -C_R^n$$

$$= \frac{1}{4l} \left(-b D_{Xpz}^n - \frac{2}{3} a D_{Ypz}^n \right) \times 1.67 \times 10^4 \text{ (V/mm)}, \quad (41)$$

where D_X^{n-1} and D_Y^{n-1} are the position differences measured on the $(n-1)$ th minirun, l is the effective lever arm from the piezomirror to the cathode, and the numerical factor is a conversion factor between voltage applied to a piezo stack and the resulting expansion.

The piezomirror provided a range at the cathode of $\pm 50 \mu\text{m}$ helicity-correlated displacement (measured on the electron beam), and a range of ± 4 (± 25) μm in x (y) at the 1-GeV beam diagnostics during T-437. The range has dropped to $\pm 20 \mu\text{m}$ at the cathode because of adjustment of the imaging optics and to $\sim \pm(1-2) \mu\text{m}$ at 1 GeV for the engineering and physics runs because of changes to the accelerator focusing lattice due to requirements for compatibility with other accelerator programs.

While the POS loop closes reliably using diagnostics at 100 keV, the constraints imposed on the electron optics by compatibility of multiple beams were severe enough that it was a challenge to make the POS loop work using 1-GeV

¹⁸Physik Instrumente GmbH and Co, Auf der Roemerstrasse D-76228 Karlsruhe/Palmbach, Germany.

diagnostics during 2002 Physics Run I. The primary issue was that the phase advances of the electron beam in x and y from the cathode to the 1-GeV diagnostics differed by $\sim 90^\circ$. This made it difficult to find a tune for the electron optics that gave linearly independent beam motion at 1 GeV for x - and y -tilts of the piezomirror. We chose to run the POS loop with a gain of 0.25 to reduce our sensitivity to poor orthogonality between the x - and y -tilts. We were free to choose the gain because we did not need $1/N$ scaling of the position differences.

5.4. Slow reversals and cancellations of $^{\text{beam}}A_{\text{LR}}$'s

It is useful to incorporate into the experiment certain “slow reversals” that change the sign of an effect with respect to its influence on the physics asymmetry. Such slow reversals serve two purposes: they generate cancellations of $^{\text{beam}}A_{\text{LR}}$'s and they provide a means of verifying our understanding of the measured detector asymmetry. Having multiple slow reversals allows us to study the quality of cancellation each reversal provides. If a single reversal yields the same central value for the physics asymmetry in both of its states then it provides a convincing cross check that false detector asymmetries (such as those arising from nonzero $^{\text{beam}}A_{\text{LR}}$'s or electronic cross talk) are well understood. However, if the two states disagree, it is difficult to quantify how to make a correction. Using multiple reversals provides a number of complementary cross checks, each of which is sensitive to different combinations of false asymmetries. Comparing the quality of agreement between states for each slow reversal may provide a measure of the uncertainty in the physics asymmetry.

Two types of reversal can be identified: those that are designed to reverse the sign of the physics asymmetry ($A_{\text{LR}}^{\text{Möller}}$) without changing any false asymmetries in the experiment, and those that are designed to reverse the sign of certain $^{\text{beam}}A_{\text{LR}}$'s without changing the physics asymmetry. We have implemented one reversal of each kind in the source optics system: the insertable half-wave plate provides a slow reversal of the physics asymmetry and the Asymmetry Inverter provides a slow reversal of position differences arising from the

polarization optics. These two reversals are discussed in more detail below.

Additional slow reversals can be implemented on the electron beam as well. A second means of physics reversal takes advantage of the energy dependence of the rate of g-2 precession of the beam polarization as the beam is brought around a bend and into End Station A. We run at two energies that each result in longitudinal polarization in End Station A. For a given electron helicity at the source, the two energies correspond to opposite helicities on target. It would also be useful to implement a second Asymmetry Inverter in the electron beam optics, but this has not yet been done.

5.4.1. Half-wave plate reversal

The half-wave plate is expected to provide cancellation of many classes of false asymmetries, including those arising from electronic cross talk and helicity-correlated lensing or steering differences from the CP cell. However, as is discussed in detail in Section 4.4, it is not straightforward to gain a cancellation of $^{\text{beam}}A_{\text{LR}}$'s arising from imperfections in the circular polarization of the laser beam. For physics running we use the insertable half-wave plate on the Cathode Diagnostics Bench because it is downstream of all other optics except the vacuum window on the electron gun. We toggle the state of the half-wave plate once every 48 h.

5.4.2. Asymmetry inverter reversal

Immediately downstream of the PS cell is the Asymmetry Inverter, which is described in Section 3.2.2. Switching between its “+” and “−” optics inverts both the position and angle of the outgoing optics rays. Averaging over all optics rays in the beam, any helicity-correlated position and angle differences resulting from the polarization optics should have opposite signs for the two Asymmetry Inverter states. We can see this by considering the helicity-correlated position and angle differences for the laser beam entering the Asymmetry Inverter, averaging over all its optics rays:

$$\begin{aligned} D_X &= \langle x \rangle_{\text{R}} - \langle x \rangle_{\text{L}} \\ D_{X'} &= \langle x' \rangle_{\text{R}} - \langle x' \rangle_{\text{L}}. \end{aligned} \quad (42)$$

Then for the laser beam exiting the Asymmetry Inverter, using Eq. (15) we expect

$$\begin{aligned} D_{\bar{X}}^+ &= -D_{\bar{X}}^- = 2.25D_X \\ D_{\bar{X}'}^+ &= -D_{\bar{X}'}^- = 0.44D_X'. \end{aligned} \quad (43)$$

Alternate running with equal amounts of physics data in the “+” and “-” modes should yield

$$\begin{aligned} D_{\bar{X}} &= D_{\bar{X}}^+ + D_{\bar{X}}^- = 0 \\ D_{\bar{X}'} &= D_{\bar{X}'}^+ + D_{\bar{X}'}^- = 0, \end{aligned} \quad (44)$$

cancelling any position and angle differences which arise from the polarization optics. However, the Asymmetry Inverter does not help with cancelling A_{LR}^{beam} 's arising from downstream optics, and it does not allow cancellation of spot size differences due to their even symmetry.

5.5. Measurements of A_{LR}^{beam} 's during T-437

Measurements of A_{LR}^{beam} 's were made during T-437 and are reported fully in Ref. [9]. T-437 was a one-week beam test in November 2000 which recommissioned the polarized electron source and commissioned the polarization optics, electron beam diagnostics, and SCP and E-158 DAQs that are used for controlling A_{LR}^{beam} 's. In particular, T-437 was an opportunity to commission the IA and POS loops, measure A_I and $D_{X(Y)}$, and study the effectiveness of the half-wave plate and Asymmetry Inverter cancellations. Here we summarize those results.

5.5.1. Measurements of A_I

We commissioned the IA loop and measured A_I during T-437. A pair of toroids at the 1-GeV point in the accelerator measured the beam current and A_I . The measurement from one toroid controlled the feedback while the second toroid provided an independent measurement that was used to evaluate the systematic error associated with the measurement and to determine the toroid resolution. We used miniruns of 2000 pairs in length, yielding a statistical error per minirun of $\sim 5 \times 10^{-4}$, based upon the ~ 0.6 – 0.8% intensity jitter at that time. Fig. 29a shows the performance of the IA loop during part of T-437. The mean value of A_I and an envelope representing the one-sigma

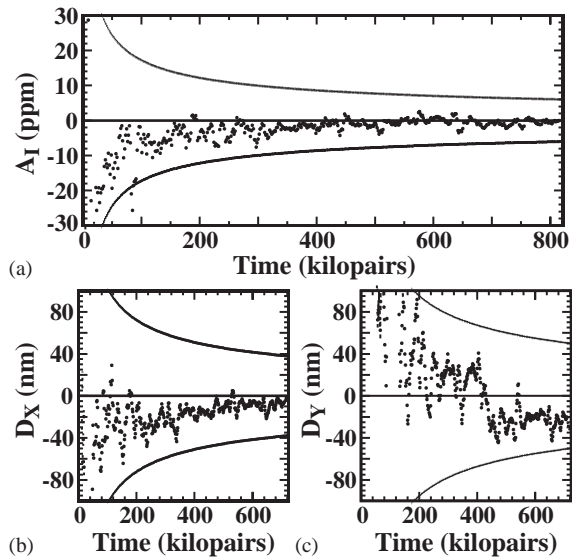


Fig. 29. Average values of A_I , D_X , and D_Y as a function of time during T-437. Reprinted from Ref. [9].

statistical error (assuming a zero systematic offset) are plotted as a function of time in units of the number of pulse pairs included in the average. For the entire T-437 test, we measured $A_I = 0.2 \pm 5.7$ ppm, where the error bar is the statistical error (i.e., the rms width of the intensity asymmetry distribution divided by the square root of the number of pairs in the distribution). The mean value of 0.2 ppm is consistent with the expected asymmetry of ~ 0.33 ppm assuming $1/N$ scaling. Further evidence for $1/N$ scaling can be seen in Fig. 29a, where the mean value of A_I rapidly acquires a value significantly less than the statistical error and wanders around zero. T-437 also demonstrated agreement between the two current monitors of 6 ± 12 ppb, where the error is determined by the toroid resolution.

5.5.2. Measurements of $D_{X(Y)}$

We also commissioned the POS loop and measured $D_{X(Y)}$ during T-437. For that test, we used three beam position monitors (BPMs) spaced at 1-m intervals and located at the 1-GeV point in the accelerator. The middle BPM was the control device for the feedback loop. The position differences measured by the upstream and downstream BPMs were used to predict the position

difference at the middle BPM and thereby provide an independent measurement that was used to evaluate the systematic error associated with the measurement and to determine the BPM resolution. We used a minirun length of 10,000 pulses. T-437 demonstrated that the POS loop closes, as shown in Figs. 29b and c. T-437 set a limit at the 20-nm level on the ability of the POS loop to make position differences small and was only limited by the available statistics. The corrections induced by the POS loop are tabulated in Table 7. The measurements at the middle (feedback) BPM were found to agree with the predicted value determined by the upstream and downstream BPMs to a level of 2 nm.

5.5.3. Half-wave plate cancellation

We toggled the state of the half-wave plate on the Cathode Diagnostics Bench every two hours during several shifts of T-437 and found that it provided some cancellation of $D_{X(Y)}$, as shown in Table 6. For this running period, the IA loop was under control of the SCP DAQ and used a toroid in the injector for its feedback device; the POS loop was not used. The cancellation yields approximately a factor of three reduction in y and an order of magnitude in x . However, the degree of cancellation is extremely sensitive to the details of the source setup, so this past performance cannot be taken as a strong indication of the quality of cancellation from the half-wave plate for future running. A new cathode, realignment of the CP and PS cells, and adjustment of the imaging optics all can affect the ability of the half-wave plate toggling procedure to cancel $D_{X(Y)}$.

5.5.4. Asymmetry inverter cancellation

A test of the Asymmetry Inverter during T-437 yielded encouraging results. Table 7 lists the corrections applied by the POS loop for runs in each state of the Asymmetry Inverter, along with their average. For these runs, both the IA and POS loops were used under the control of the E-158 DAQ. In the case of the y position differences, for which the correction applied by the POS loop was large, a significant degree of cancellation is seen. It should be noted that in both states the POS loop

Table 6

Half-wave plate cancellation results. The state of the half-wave plate was toggled every 2 h over several shifts. These results are the average measured position differences for that period of time. In calculating the weighted average of the half-wave plate “IN” and “OUT” results, the sign of the “OUT” data is flipped to reflect the reversal of the sign of the physics asymmetry. Reprinted from Ref. [9]

Asymmetry	$\lambda/2$ IN	$\lambda/2$ OUT	Weighted average
BPM 2 X	126 ± 12 nm	119 ± 11 nm	-7 ± 8 nm
BPM 2 Y	-1732 ± 57 nm	-581 ± 51 nm	-461 ± 38 nm

Table 7

Size of corrections applied by the POS loop for alternate states of the Asymmetry Inverter. Reprinted from Ref. [9]

Fdbk correction induced	-2I State	+2I State	Average
D_X Correction	262 ± 48 nm	-39 ± 71 nm	168 ± 40 nm
D_Y Correction	-862 ± 109 nm	1157 ± 130 nm	-29 ± 84 nm

maintained the measured values of $D_{X(Y)}$ at a level that was consistent with zero.

5.6. Performance of passive and active suppression strategies

We finish this section by comparing the performance of the passive optimization and the active feedbacks. The intensity asymmetry is initially 0.1–0.5% after setting the CP and PS cell voltages with the HF. Adjusting A_1 and A_2 manually to null it brings it to the 100-ppm level. The IA loop reduces A_1 by more than 2 orders of magnitude to $\ll 1$ ppm (for example, T-437 achieved $A_1 \sim 0.3$ ppm in a short run and was statistics-limited). The Phase Feedback can reduce the average IA loop correction to the few ppm level.

Helicity-correlated position differences are typically several microns prior to the passive optimization. Optimizing the Pockels cell and laser beam setup and imaging the CP cell onto the cathode reduce $D_{X(Y)}$ to 0.5–1.0 μm . The POS loop further reduces $D_{X(Y)}$ by ~ 2 orders of magnitude at the 1-GeV point in the accelerator (for example, T-437 achieved $D_{X(Y)} \sim 20$ nm and was statistics limited).

6. Conclusion

We have described the laser and optics systems for SLAC's polarized electron source for the E-158 parity violation experiment. This experiment seeks to measure a parity-violating right-left asymmetry with a statistical error of 8 parts per billion (ppb), and therefore requires systematic errors due to right-left beam asymmetries at the ppb level. The laser is a stable, high-power, high-repetition rate, low-maintenance flashlamp-pumped Ti:Sapphire. Polarized electrons of either helicity can be generated by flipping the helicity of the laser beam. The optics system has been extensively analyzed and optimized to minimize $^{beam}A_{LR}$'s. The primary sources of $^{beam}A_{LR}$'s are residual linear polarization in the laser beam interacting with the photocathode's QE anisotropy and, possibly, helicity-correlated steering by the CP cell. The techniques we employ to achieve this include careful selection and setup of the polarization Pockels cells, imaging of the CP Pockels cell onto the cathode, active feedbacks on the helicity-correlated intensity asymmetry and position differences, half-wave plate reversals of the beam helicity, and an Asymmetry Inverter to reverse position and angle differences. This system has been implemented for E-158's physics run in 2002; it will be used for an additional E-158 physics run and for a variety of polarized beam experiments thereafter.

Acknowledgements

This work was supported by Department of Energy contracts DE-AC03-76SF00515 (SLAC), DE-FG02-01ER41168 (University of Virginia), DE-FG02-90ER40557 (Princeton University), DE-FG02-88ER40415 (University of Massachusetts), and DE-FG02-84ER4016 (Syracuse University), and by National Science Foundation Grant No. PHY-72192 (California Institute of Technology).

References

[1] C.Y. Prescott, et al., Phys. Lett. B 84 (1979) 524.

- [2] P.C. Rowson, D. Su, S. Willocq, Ann. Rev. Nucl. Part. Sci. 51 (2001) 345 (see references contained therein).
- [3] E.W. Hughes, R. Voss, Ann. Rev. Nucl. Part. Sci. 49 (1999) 303 (see references contained therein).
- [4] R. Alley, et al., Nucl. Instr. and Meth. A 365 (1995) 1–27.
- [5] J.L. Turner, et al., A High Intensity Highly Polarized Electron Beam for High-Energy Physics. Presented at EPAC'02, SLAC-PUB-9235, June 2002.
- [6] A Precision Measurement of Parity Violation in Møller Scattering. SLAC Proposal E-158, 1997.
- [7] M. Woods, SLAC E158: An experiment to measure parity violation in Moller scattering. In American Institute of Physics Conference Proceedings, Vol. 549, 2000, pp. 910–12.
- [8] A. Czarnecki, W.J. Marciano, Phys. Rev. D 53 (1996) 1066–1072.
- [9] P.A. Mastromarino, et al., IEEE Trans. Nucl. Sci. NS-49 (2002) 1097–1105.
- [10] K.H. Witte, A Reliable Low Maintenance Flashlamp Pumped Ti:Sapphire Laser Operating at 120-PPS. Presented at Lasers '93, Lake Tahoe, NV, December 6–9, 1993.
- [11] T. Maruyama, et al., Nucl. Instr. and Meth. A 492 (2002) 199–211.
- [12] American Linear Collider Working Group (T. Abe and others), Linear Collider Resource Book for Snowmass 2001, SLAC-R-570, BNL-52627, CLNS-01-1729, FERMI-LAB-PUB-01-058-E, LBNL-47813, UCRL-ID-143810-DR, LC-REV-2001-074-US, 2001.
- [13] R.A. Mair, et al., Phys. Lett. A 212 (1996) 231.
- [14] F. Halzen, A. Martin, Quarks and Leptons, Wiley, New York, 1984, pp. 105,126.
- [15] M. Born, E. Wolf, Principles of Optics, 6th Edition, Cambridge University Press, Cambridge, UK, 1980, pp. 24–28.
- [16] P. Saez, et al., Polarization studies of strained GaAs photocathodes at the SLAC gun test laboratory, Talk given at 16th IEEE Particle Accelerator Conference (PAC 95) and International Conference on High Energy Accelerators (IUPAP), Dallas, Texas, 1–5 May, SLAC-PUB-6987, 1995.
- [17] A.E. Siegman, Lasers, University Science Books, Mill Valley, CA, 1986, pp. 842–845.
- [18] A. Brachmann, et al., SLAC's Polarized Electron Source Laser System for the E-158 Parity Violation Experiment, Proceedings of SPIE: Laser and Beam Control Technologies, Vol. 4632, 2002, p. 211.
- [19] F.-J. Decker, et al., Interlaced Beams of Unequal Energy and Pulse Length in the SLAC Linac for PEP-II and Experiment E-158. Presented at EPAC'02, June 2002. SLAC-PUB-9361.
- [20] E. Collett, Polarized Light, Marcel Dekker, Inc., New York, 1993.
- [21] P. Horowitz, W. Hill, The Art of Electronics, Cambridge University Press, Cambridge, 1980.
- [22] G.D. Cates, et al., Nucl. Instr. and Meth. A 278 (1989) 293–317.
- [23] K.S. Kumar, Parity Violation in Elastic Electron Carbon Scattering, Ph.D. Thesis, Syracuse University, 1990.