

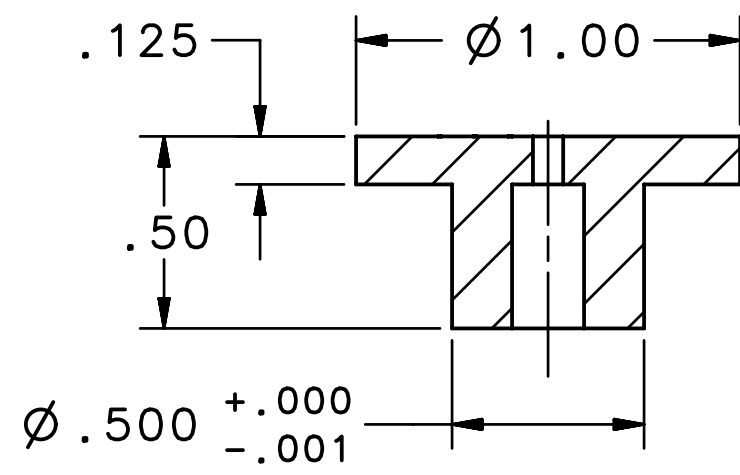
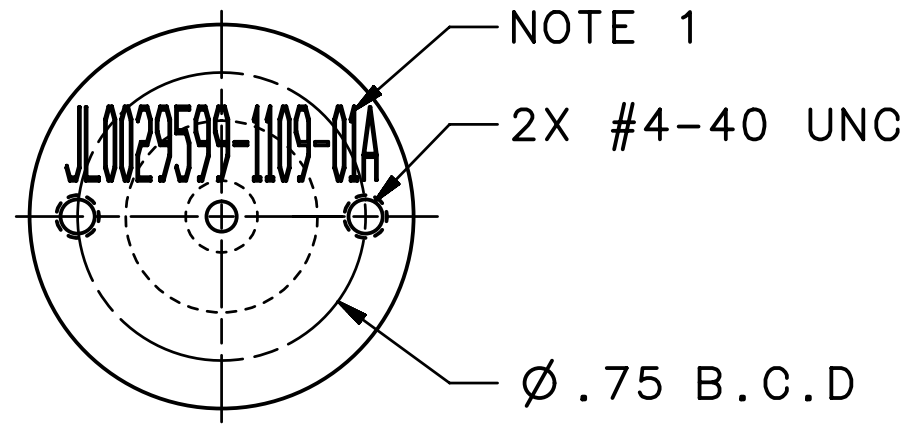
4

3

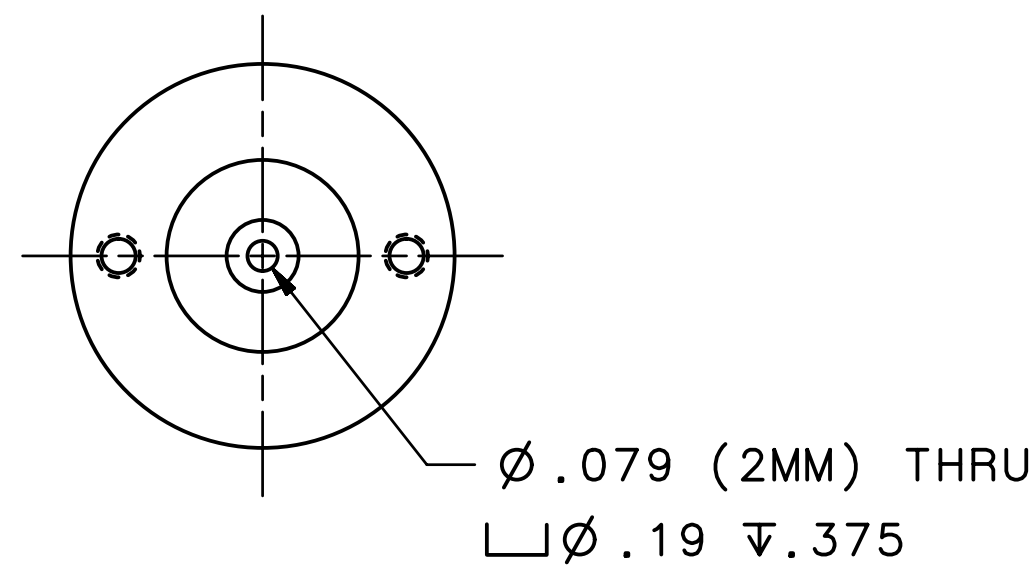
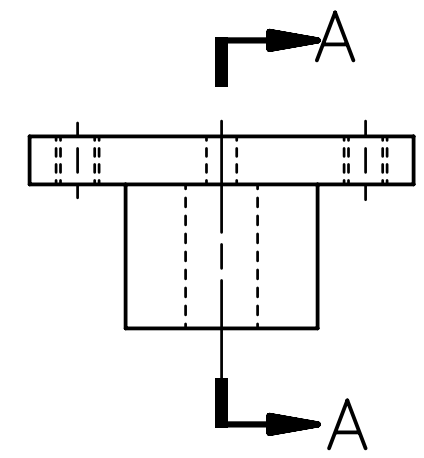
2

1

REVISION HISTORY		
ZONE	REV	DESCRIPTION
		DATE/REVISER



SECTION A-A



NOTES:

1. STAMP OR ETCH DRAWING NO. IN .19 HIGH CHARACTERS IN AREA SHOWN.
2. BREAK AND DEBURR ALL EDGES.

DIM & TOL PER ASME Y14.5 2009 UNLESS OTHERWISE SPECIFIED DIMENSIONS ARE IN INCHES TOLERANCES ARE: FRACTIONS    DECIMAL    ANGLES $\pm 1/8$ .X $\pm .1$ .XX $\pm .01$ .XXX $\pm .005$	MATERIAL	United States Department of Energy <b>Jefferson Lab</b> <small>Thomas Jefferson National Accelerator Facility</small> Newport News Virginia
	ALUMINUM 6061-T6	
THIRD ANGLE PROJECTION	FINISH 125 UNLESS MACHINED SURFACES <input checked="" type="checkbox"/> SURFACES UNLESS OTHERWISE NOTED DEBURR & BREAK ALL SHARP EDGES	ACC UITF MOTT POLARIMETER COLLIMATOR APERTURE, 2MM ID
	DO NOT SCALE DRAWING	SIZE DWG. NO. <b>C</b> JL0029599-1109-01A
DRAWN S.A. GREGORY DATE 11NOV21	SCALE 2:1 USED ON ASSY NO. N/A	SHEET 1 OF 1

4

3

2

1