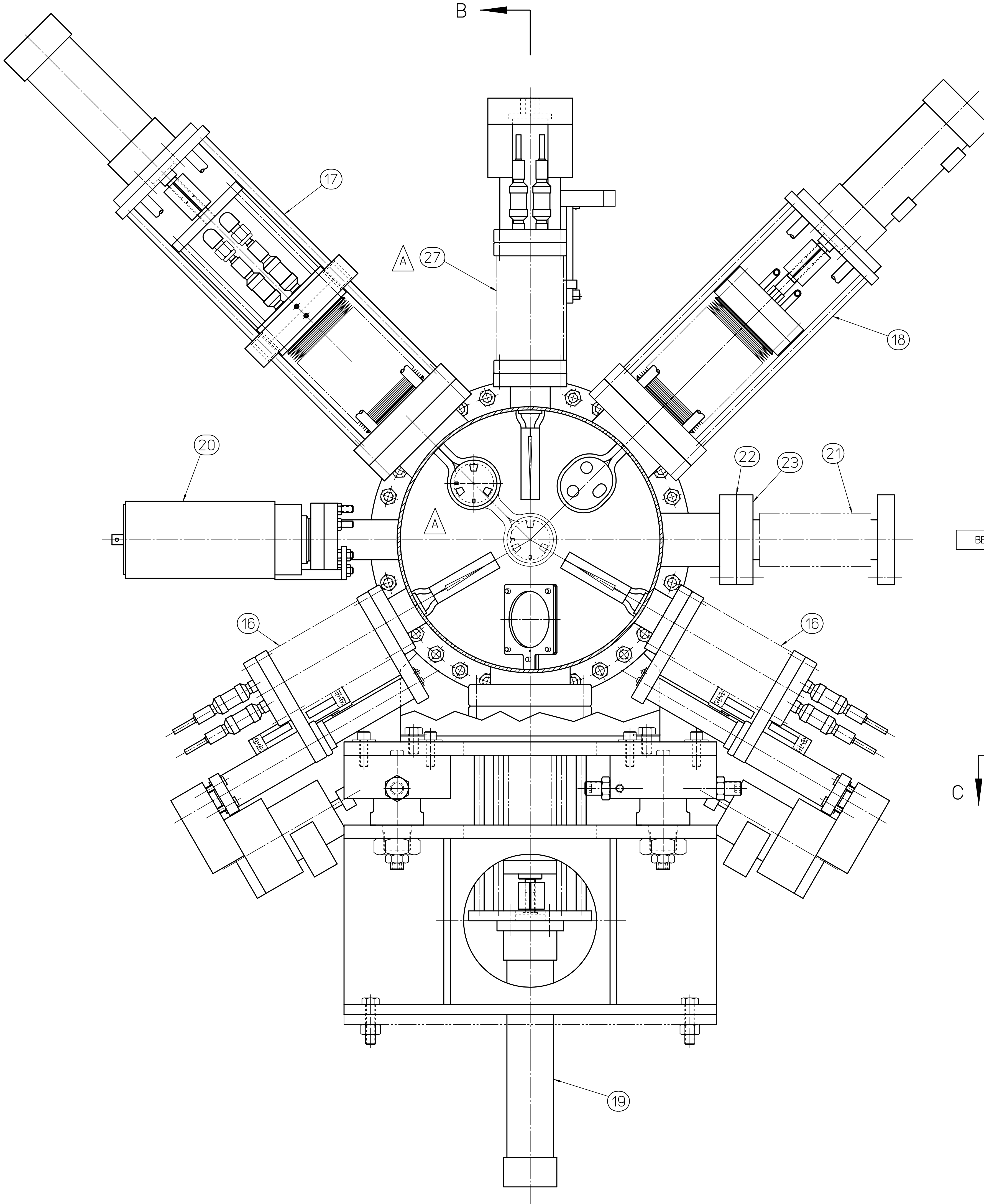
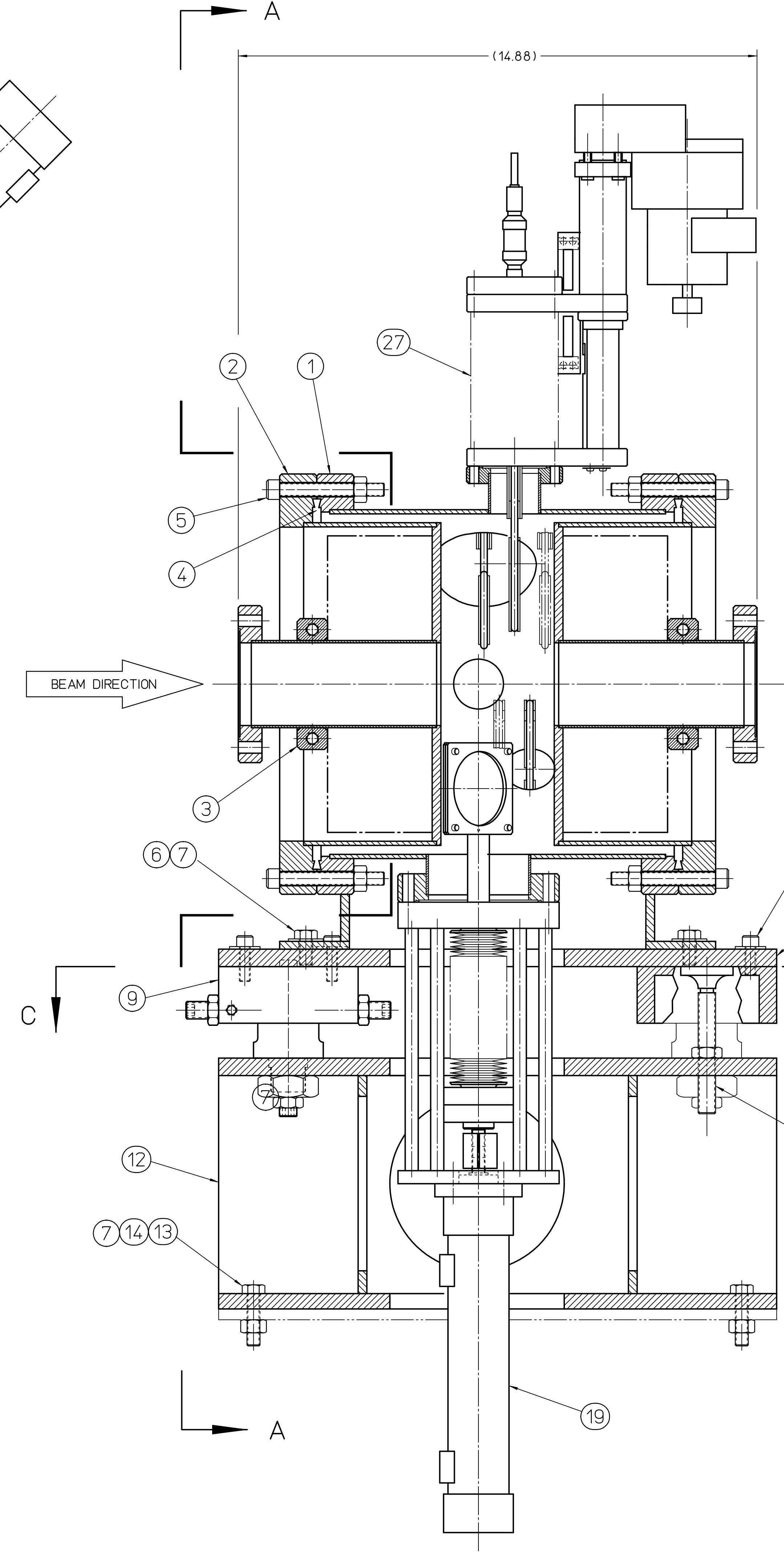


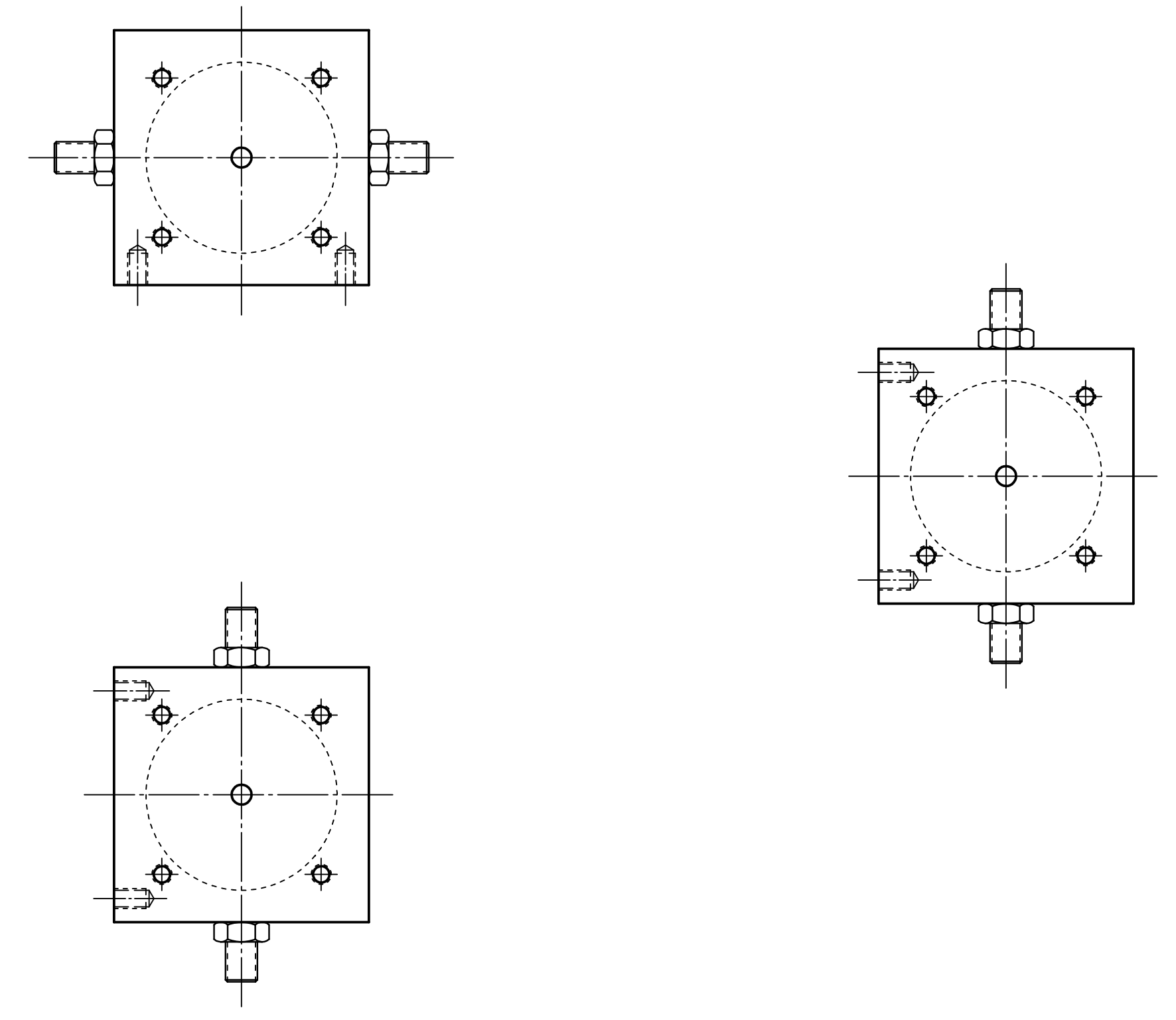
REVISIONS			DATE/REVISOR
ZONE	REV.	DESCRIPTION	
ALL	A	REVISED VIEWS TO REFLECT REVS TO ITEMS 16 & 17. REPLACED ONE ITEM 16 WITH NEW ITEM 27 AND REVISED VIEWS TO REFLECT CHANGE. DELETED ITEMS 24 - 26 AND REVISED AFFECTED VIEWS. DELETED NOTES 2 AND 3. REVISED NOTE 1.	06APR2017 K.H.S.



SECTION A-A
THRU OUTER CHAMBER SEGMENT
WITH INNER SEGMENT REMOVED



SECTION B-B



VIEW C-C
SHOWING ORIENTATION
OF ADJUSTER CAPS

NOTES

- AFTER FINAL ALIGNING OF MASTER SLIT (ITEM 17) AND VARIABLE SLITS (ITEMS 16 AND 27), TACK WELD SHEETS TO STRONGBACK BLOCKS.
- OFF-AXIS PORT ALIGNER PART OF VARIABLE SLIT SHALL BE USED TO ADJUST TRAVEL ANGLE OF SLIT.
- AFTER ADJUSTING VARIABLE SLIT TRAVEL ANGLE, ALIGNER CLAMPS (ITEMS 24, 25 AND 26) SHALL BE TIGHTENED TO LOCK ALIGNER IN PLACE AND TO TAKE LOADS OFF OF ALIGNER.

QTY	ITEM NO.	PART OR IDENTIFYING NO.	DESCRIPTION	MATERIAL SPECIFICATION	NOTES
1	27	58432-D-0985	VARIABLE SLIT ASSEMBLY - L.P.		
10	26	58432-B-0299	ALIGNER CLAMP TURNBUCKLE		
10	25	58432-B-0298	ALIGNER CLAMP LH		
10	24	58432-B-0297	ALIGNER CLAMP RH		
1	23	HPS P/N 100889064	BOLT SET .312-24 UNF-2A X 1.75 LONG	SILVER PLATED STAINLESS STEEL	
1	22	NOR-CAL P/N 2FC-200-3	GASKET FOR 3.38 OD FLANGE	OFHC COPPER	
1	21	NOR-CAL P/N 2FC-200-3	BELLOWS		
1	20	58432-D-0134	CAMERA		
1	19	58432-E-0260	BEAM VIEWER ASSEMBLY		
1	18	58432-E-0264	CENTRAL PLUG ASSEMBLY		
1	17	58432-D-0274	MASTER SLIT ASSEMBLY		
2	16	58432-D-0286	VARIABLE SLIT ASSEMBLY		
2	15	CARR LANE P/N CL-2-JFL	JIG FEET LEVELING	12L14 STEEL-ZINC PLATED	
4	14	CEBAF STOCK NO. 5310-14020	NUT, HEAVY HEX .38-16 UNC-2B	STAINLESS STEEL	
4	13	CEBAF STOCK NO. 5305-20280	SCREW, HEX HEAD .38-16 UNC-2A X 1.50 LONG	STAINLESS STEEL	
1	12	39200-E-0040	CHAMBER STAND		
6	11	CEBAF STOCK NO. 5310-64010	WASHER, FLAT .312	STAINLESS STEEL	
6	10	CEBAF STOCK NO. 5305-40310	SCREW, SOCKET HEAD CAP .312-18 UNC-2A X 1.00 LONG	STAINLESS STEEL	
3	9	22512-D-0027	ADJUSTMENT CARTRIDGE		
1	8	32900-C-0041	CHAMBER BASE PLATE		
8	7	CEBAF STOCK NO. 5310-64020	WASHER, FLAT .38	STAINLESS STEEL	
4	6	CEBAF STOCK NO. 5305-20250	SCREW, HEX HEAD .38-16 UNC-2A X .75 LONG	STAINLESS STEEL	
2	5	MDC P/N 190015	BOLT SET .38-24 UNF-2A X 3.00 LONG	STAINLESS STEEL	
2	4	FISONS P/N ZCU250	GASKET FOR 12.00 OD FLANGE	OFHC COPPER	
2	3	RULAND SP-40-A	SHAFT COLLAR	ALUMINUM	
2	2	32900-D-0061	INNER SEGMENT ASSEMBLY		
1	1	32900-D-0065	OUTER SEGMENT ASSEMBLY		

PARTS LIST

CADD ID. NO. /wbs/3/39200/0e0066

APPROVALS: KARL SMITH 7OCT93

CHECKED: D. MACHE 10/18/93

APPROVED: [Signature]

CONST. RELEASE: C.K. SINCLAIR 10/18/93

DATE: 10/18/93

SIZE: DWG. NO. 39200-E-0066

REV. A

DO NOT SCALE DRAWING

USED ON ASSY NO. 39200-E-0033 SHEET 1 OF 1

39200-E-0066 SHEET 1 REV. A