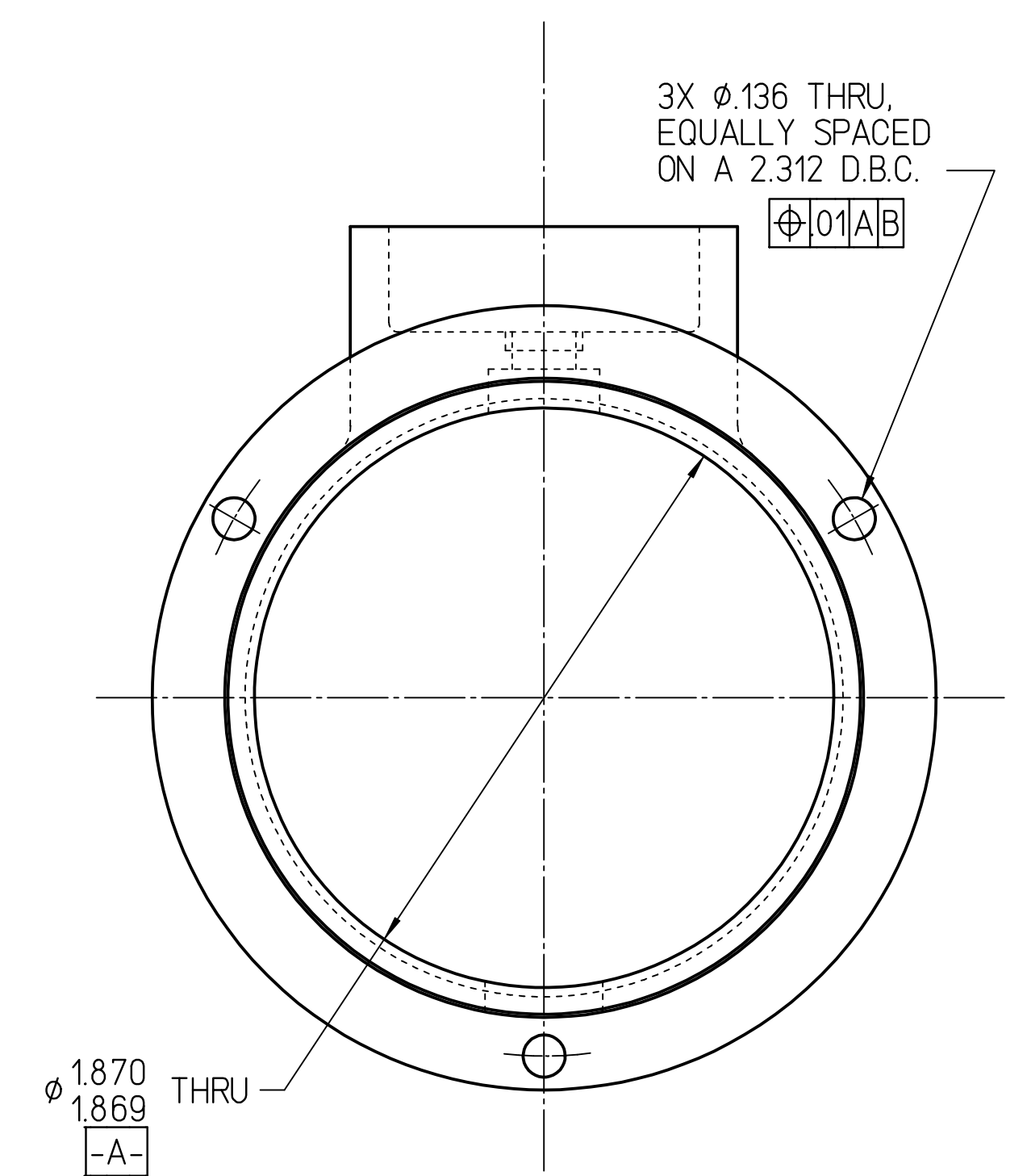
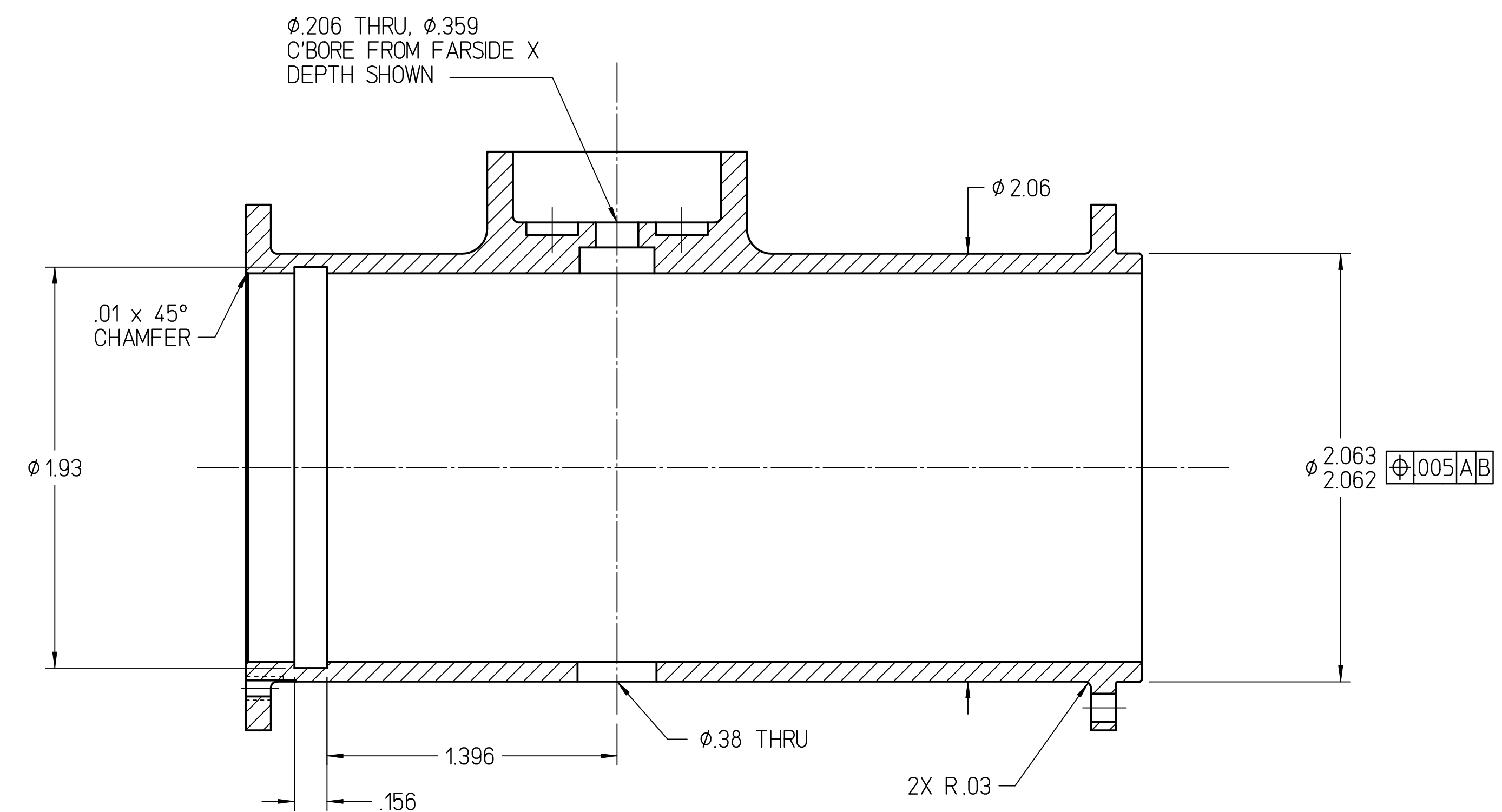
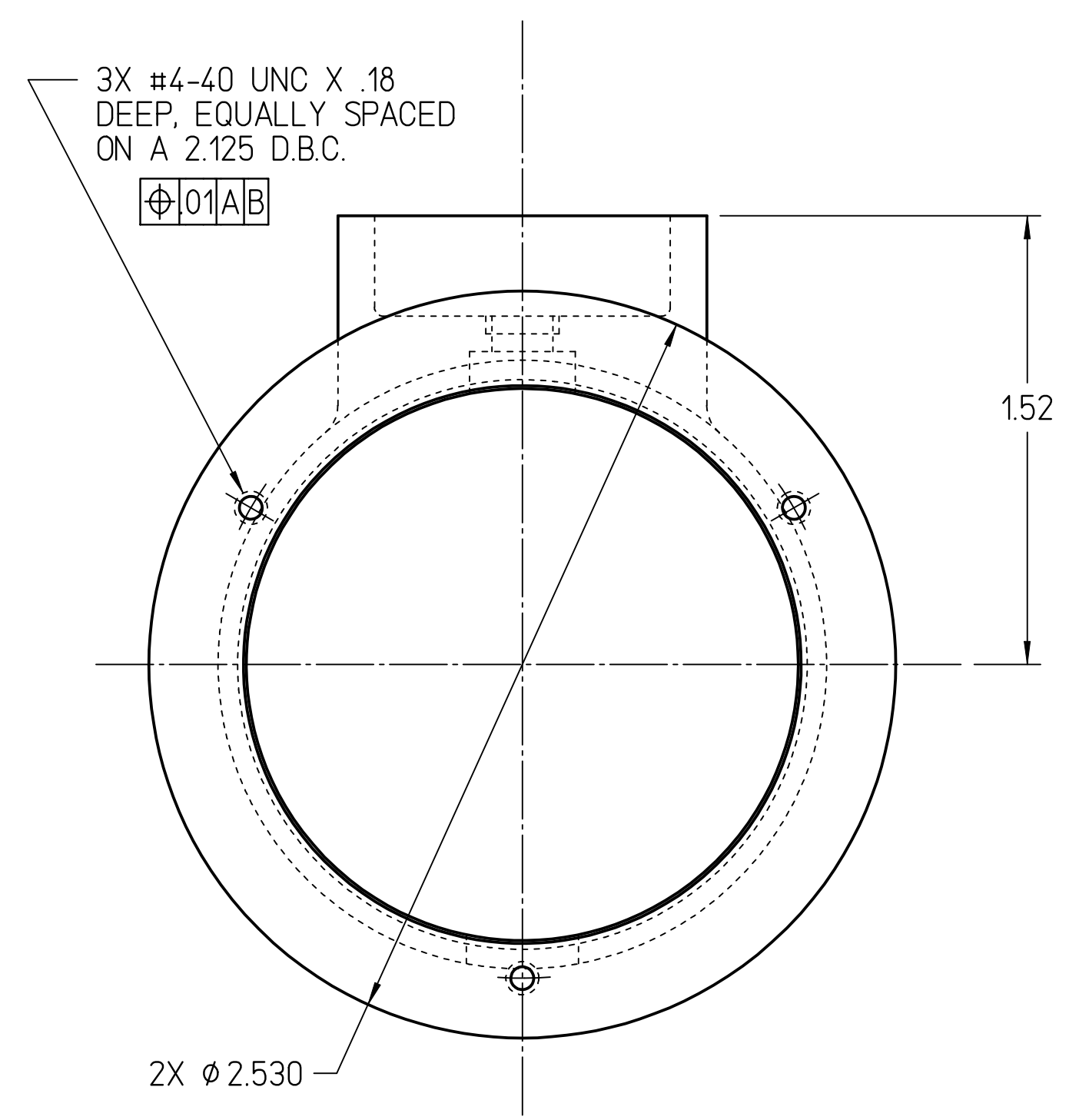
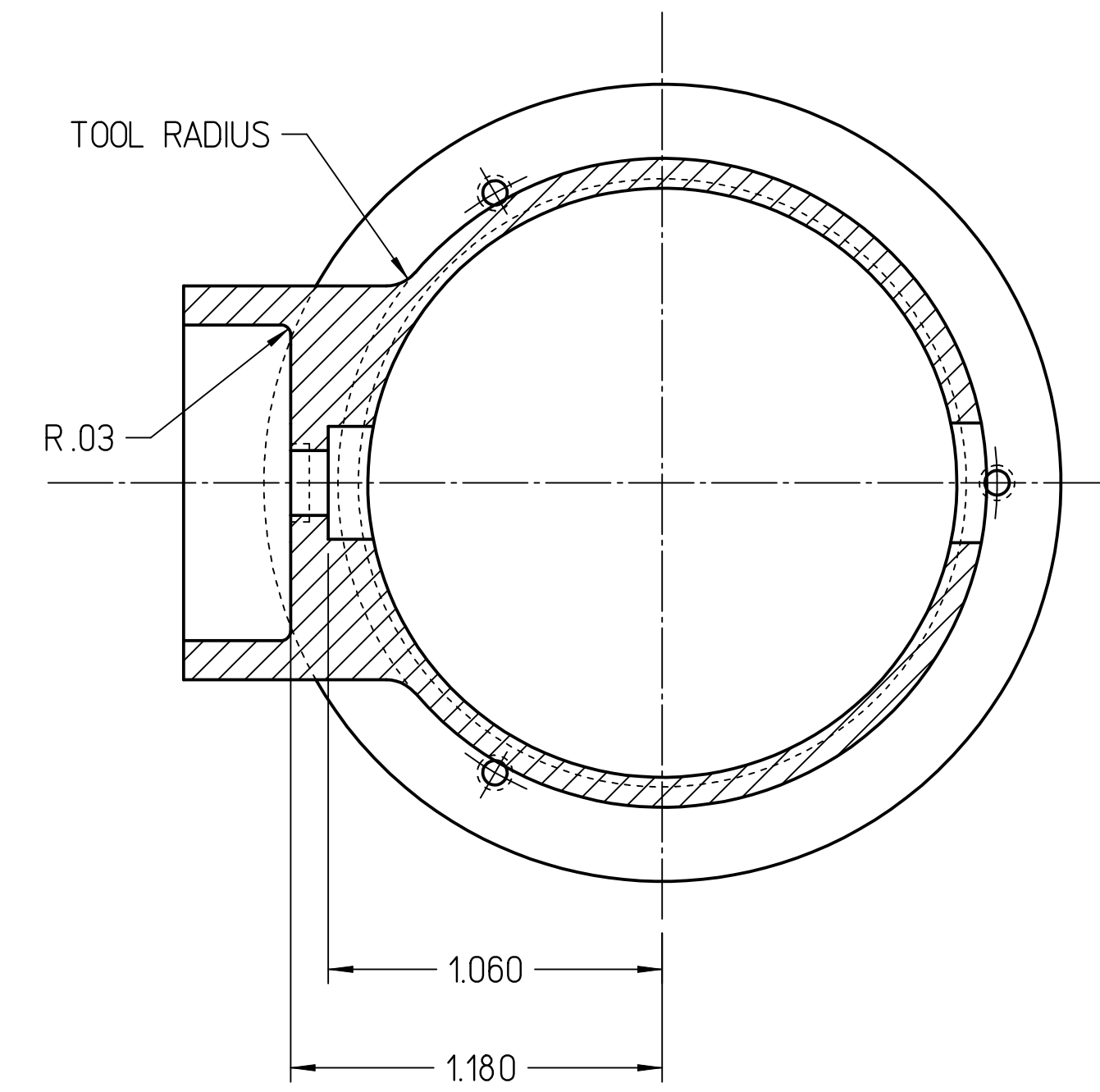
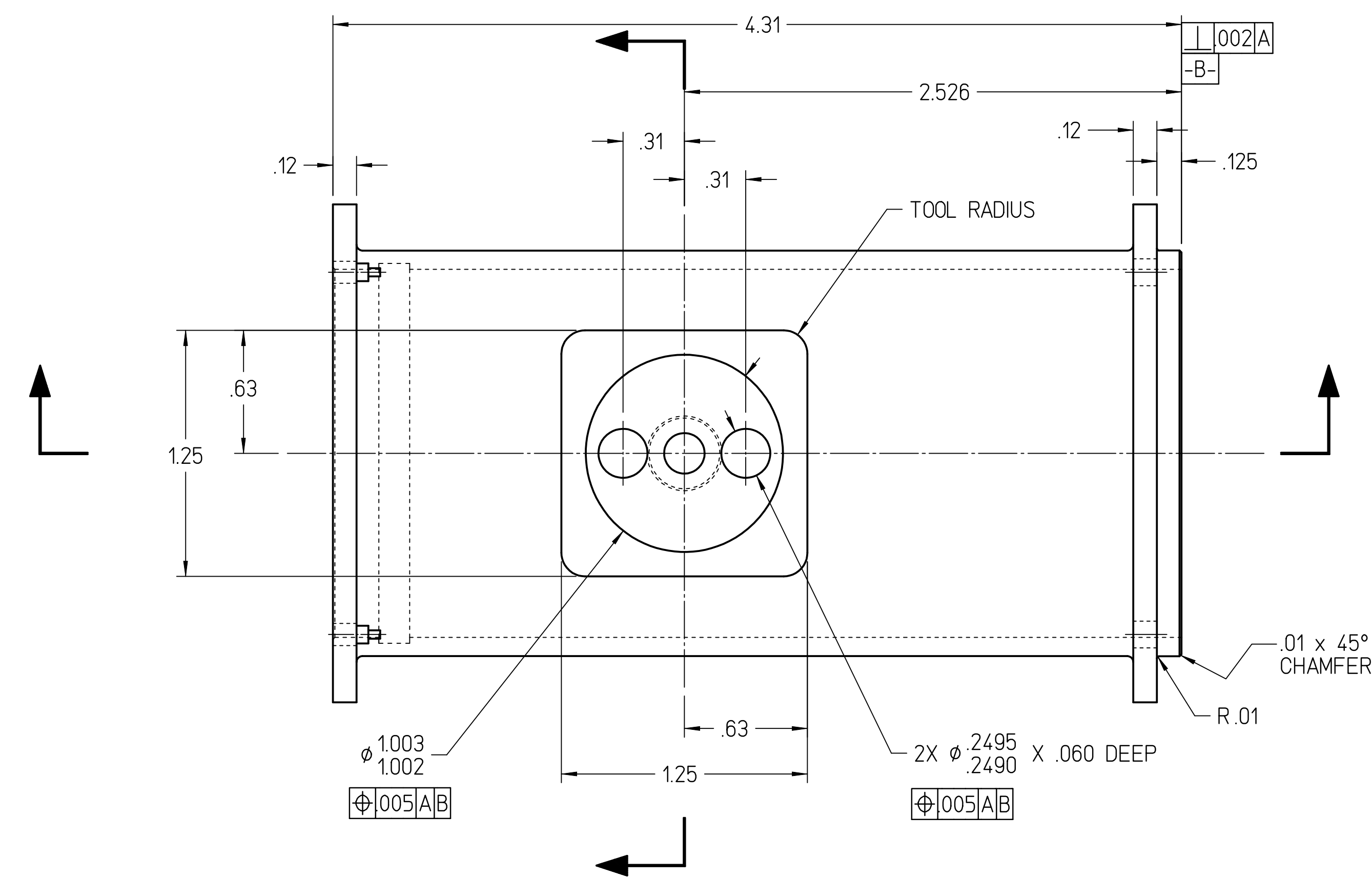


REVISION HISTORY				
ZONE	REV	DESCRIPTION	DATE	APPROVED



NOTES:

- USE THE FOLLOWING JLAB SPECIFICATIONS
 FABRICATION OF ULTRA HIGH VACUUM EQUIPMENT: #22631-S-001
 CLEANING AND HANDLING OF U.H.V. COMPONENTS: #22632-S-001

QTY REQD	ITEM NO.	PART OR IDENTIFYING NO.	NOMENCLATURE OR DESCRIPTION	MATERIAL SPECIFICATION	NOTES
PARTS LIST					
DOCUMENT CONTROL STAMP		DIM & TOL PER ASME Y14.5 UNLESS OTHERWISE SPECIFIED DIMENSIONS ARE IN INCHES TOLERANCES ARE: FRACTIONS DECIMAL ANGLES		TRACKING NO. N/A	
MATERIAL STAINLESS STEEL TYPE 316L		THIRD ANGLE PROJECTION		APPROVALS DATE	
FINISH MACHINED SURFACES DEBURR & BREAK ALL SHARP EDGES		63 UNLESS OTHERWISE NOTED		DRAWN D. MACHIE 14FEB12	
DO NOT SCALE DRAWING				CHECKED B. MATT POELKER 2/17/12	
				APPROVED B. MATT POELKER 2/17/12	
				APPROVED J. HANSKNECHT 2/17/12	
				U.S. Department of Energy Office of Science Jefferson Lab <small>Thomas Jefferson National Accelerator Facility</small> Operated by Jefferson Science Associates, LLC	
				ACC INJECTOR LOAD LOCK GUN SPHERICAL ELECTRODE MOUNT	
				SIZE DWG. NO. ACC-200-3000-0467 REV. - SCALE 2:1 USED ON ASSY NO. ACC-200-3000-0464 SHEET 1 OF 1	