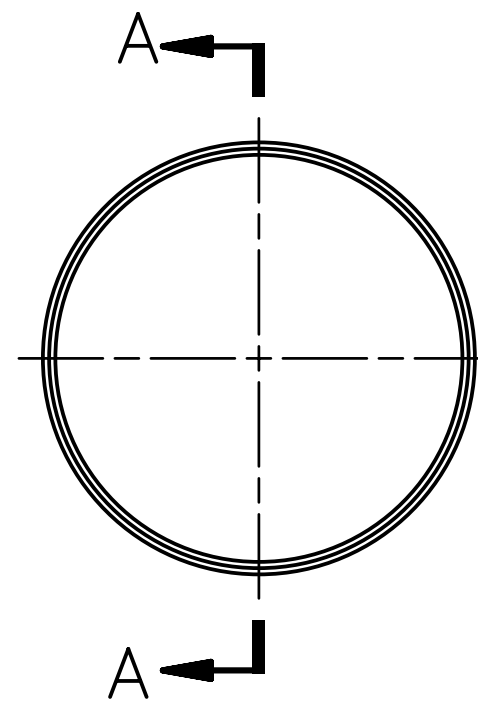
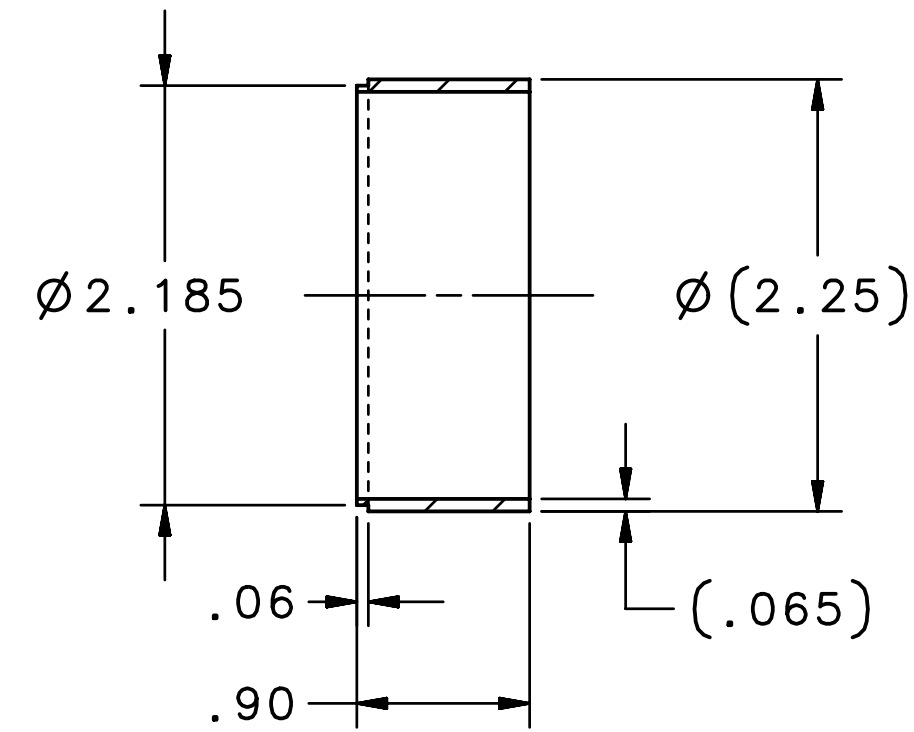


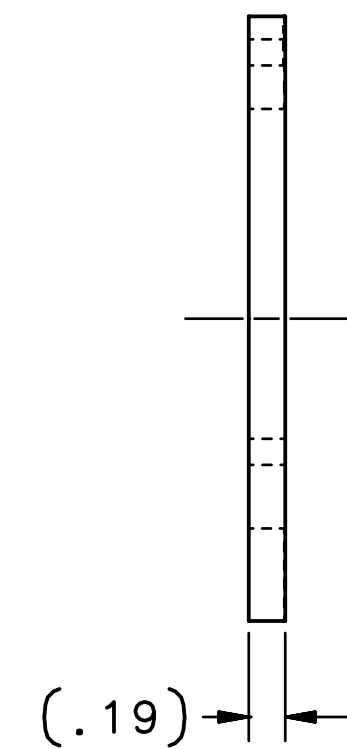
REVISION HISTORY		
ZONE	REV	DESCRIPTION
		DATE/REVISER



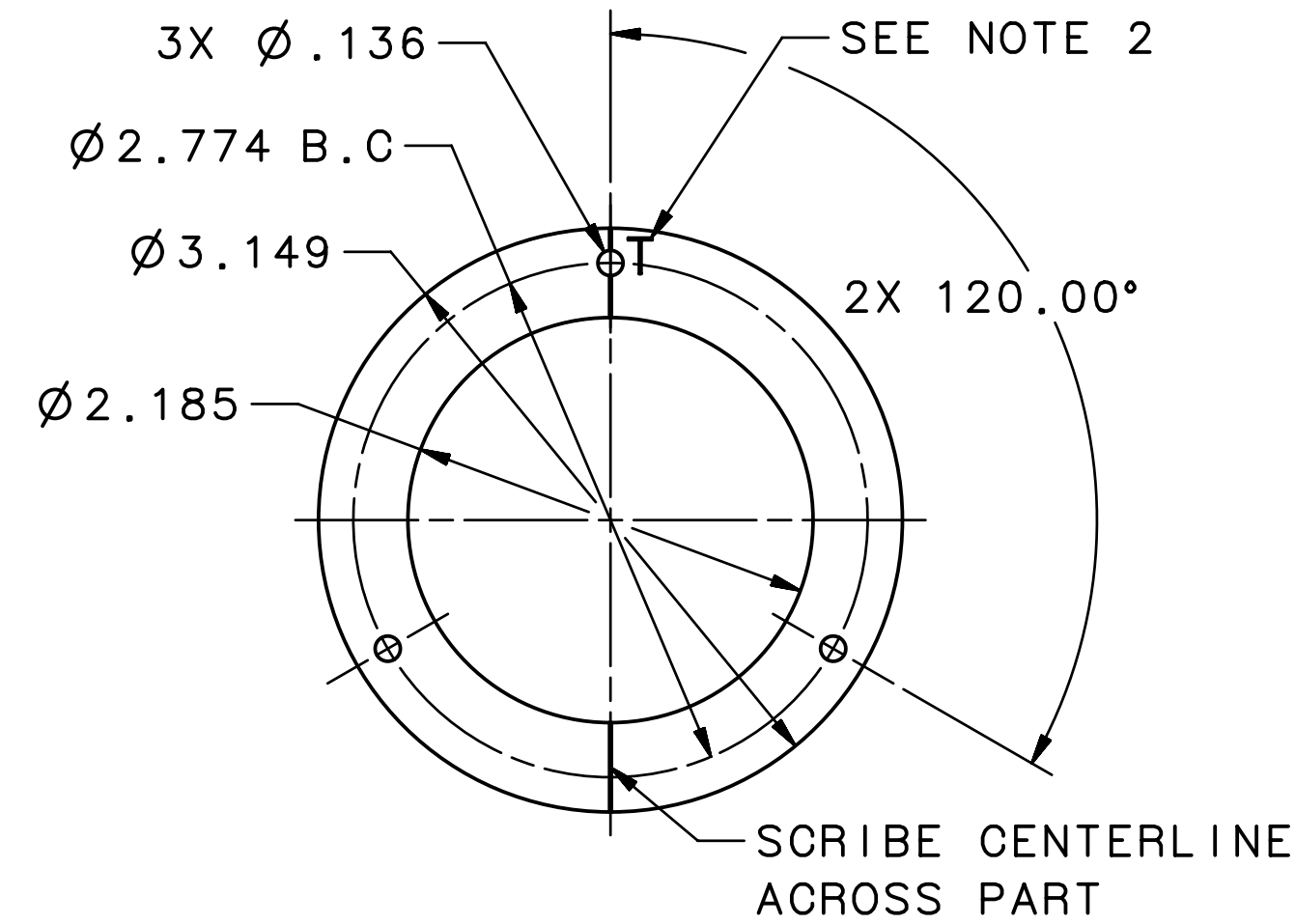
ITEM 1



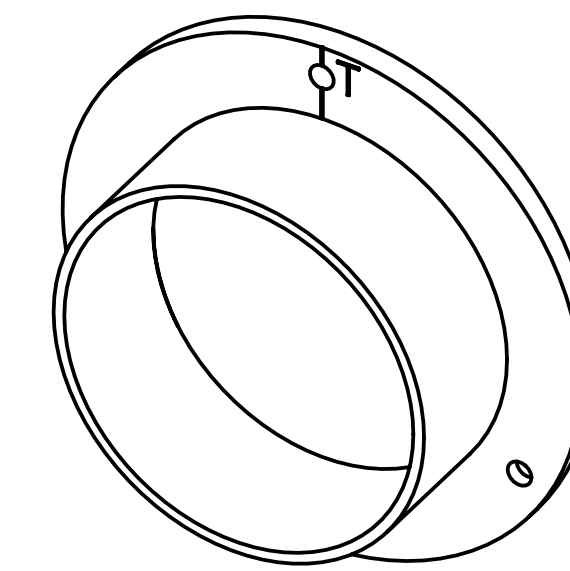
SECTION A-A



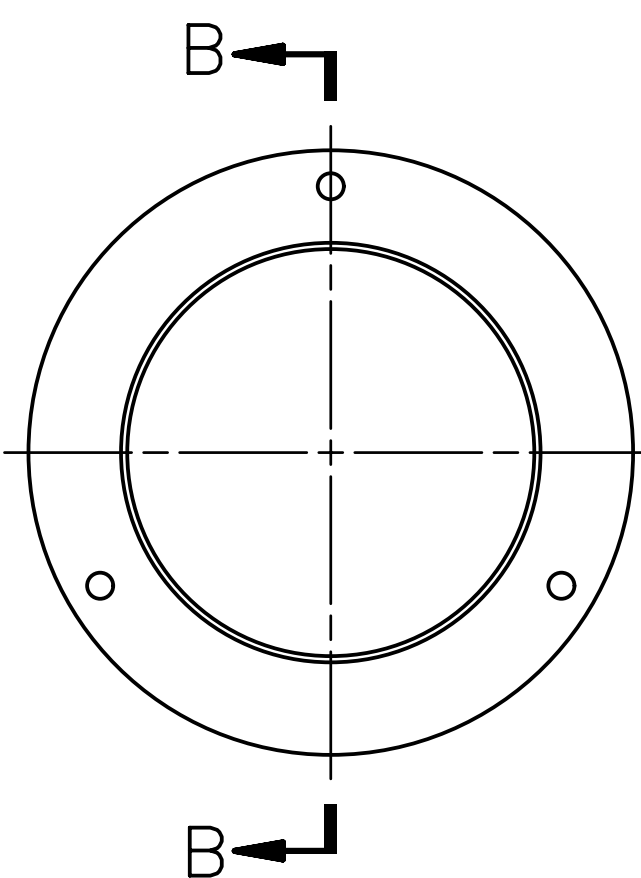
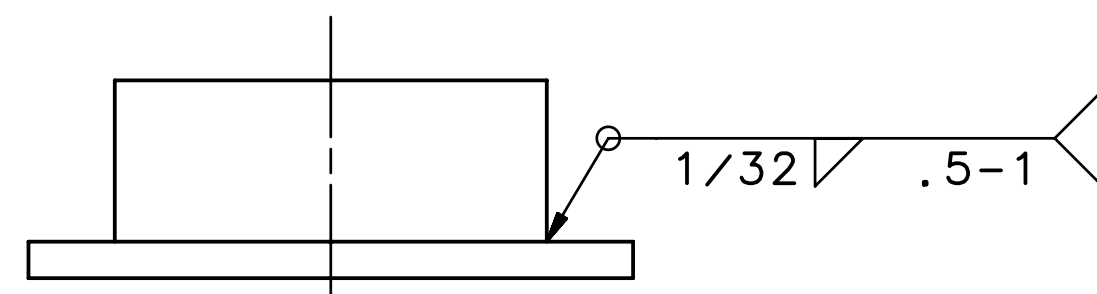
(.19)
THIS PART CAN BE AS THICK AS YOU NEED IT FOR FINAL MACHINING



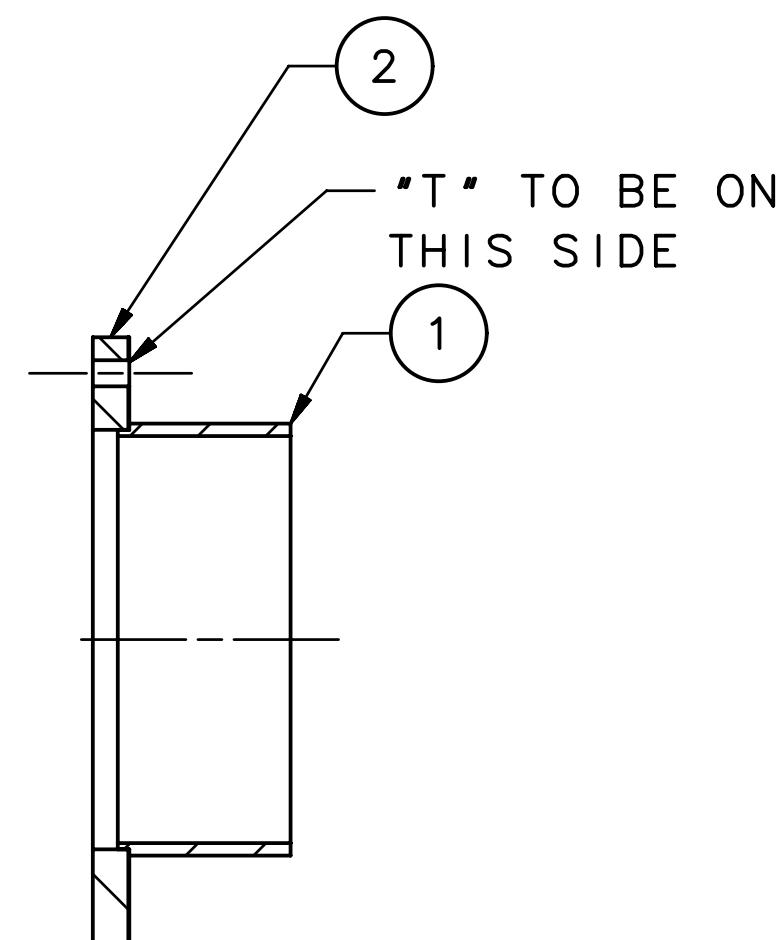
ITEM 2



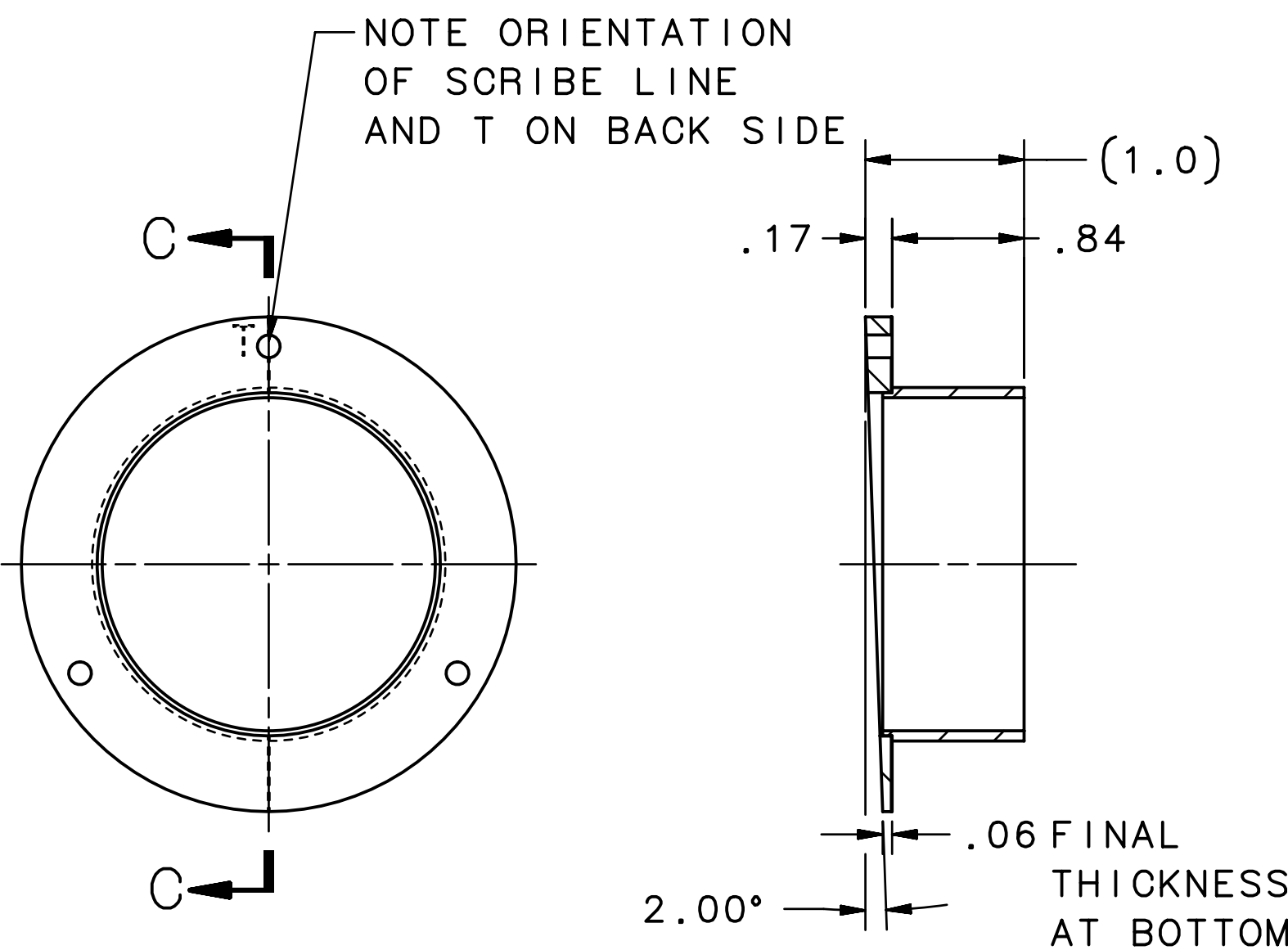
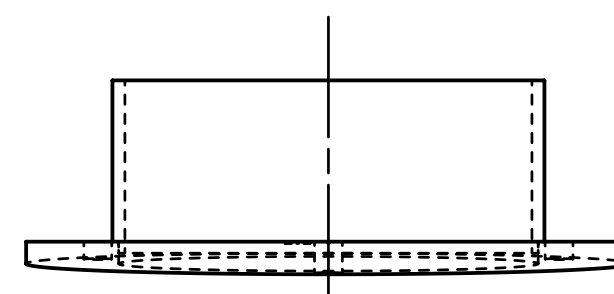
ISOMETRIC



WELD DETAIL



SECTION B-B



FINAL MACHINING DETAIL

SECTION C-C

NOTES:

- USE THE FOLLOWING JLAB SPECIFICATIONS:
FABRICATION OF UHV EQUIPMENT: #22631-S-001
CLEANING & HANDLING OF UHV COMPONENTS: #22632-S-001
- DEBURR AND BREAK ALL SHARP EDGES.
- "T" TO BE ENGRAVED OR ETCHED USING .19 HIGH CHARACTERS IN POSITION SHOWN.

QTY REQD	ITEM NO.	PART OR IDENTIFYING NO.	NOMENCLATURE OR DESCRIPTION	MATERIAL SPECIFICATION	NOTES
1	2	-02	PRE-MACHINED PLATE	STAINLESS STEEL 316	-
1	1	-01	TUBE, 2.25 OD X .065 WALL	STAINLESS STEEL 316L	-

DIM & TOL PER ASME Y14.5 2009. UNLESS OTHERWISE SPECIFIED DIMENSIONS ARE IN INCHES. TOLERANCES ARE: FRACTIONS ± 1/8 DECIMAL .XX ± .01 .XXX ± .005 ANGLES ± .50		MATERIAL SEE PARTS LIST		United States Department of Energy Jefferson Lab Thomas Jefferson National Accelerator Facility Newport News Virginia	
THIRD ANGLE PROJECTION		FINISH MACHINING SURFACES DEBURR & BREAK ALL SHARP EDGES		ACC INJECTOR LOAD LOCK GUN 2-DEG U.S. BORE SHIELD	
DO NOT SCALE DRAWING		UNLESS OTHERWISE NOTED		SIZE DWG. NO. JLO119495-0031	
DRAWN S.A. GREGORY		DATE 28MAR22		SCALE 1:1 USED ON ASSY NO. JLO119495-0030 SHEET 1 OF 1	