

* As found similar, but not identical to drawing. Appears modified for existing part.
 Not a critical part. Jk. 2/4/13

DWG. NO. 39300-B-0072	SHT. 1	REV. -	REVISIONS	APPROVED	CONST REL
			DESCRIPTION		

.06
 .13

3X 0.172 EQUALLY SPACED

Ø 4.25 ✓
 Ø 2.50
 Ø 2.880 2.975'
 Ø 3.875

QTY	ITEM	PART OR IDENTIFIED NO.	DESCRIPTION	SPECIFICATION	NOTES
PARTS LIST					
DIMENSIONS UNLESS OTHERWISE SPECIFIED ARE IN INCHES TOLERANCES ARE DECIMAL FRACTIONS .XXX ± .015 ± .12"		DAWG ID. NO.	APPROVALS	DATE	REV.
		/W/06/3/99000/00072	D. MACHIE	05/19/96	-
DRAWN BY: [Signature]		CHECKED BY: [Signature]		DATE: 06/19/96	REV. -
APPROVED BY: [Signature]		APPROVED BY: [Signature]		DATE: 06/19/96	REV. -
CONST RELEASE		CONST RELEASE		DATE: 06/19/96	REV. -
DO NOT SCALE DRAWING		DO NOT SCALE DRAWING		DATE: 06/19/96	REV. -
MATERIAL: ALUMINUM		MATERIAL: ALUMINUM		DATE: 06/19/96	REV. -
FINISH: 125 UNLESS OTHERWISE NOTED		FINISH: 125 UNLESS OTHERWISE NOTED		DATE: 06/19/96	REV. -
DEBURR & BREAK ALL SHARP EDGES		DEBURR & BREAK ALL SHARP EDGES		DATE: 06/19/96	REV. -

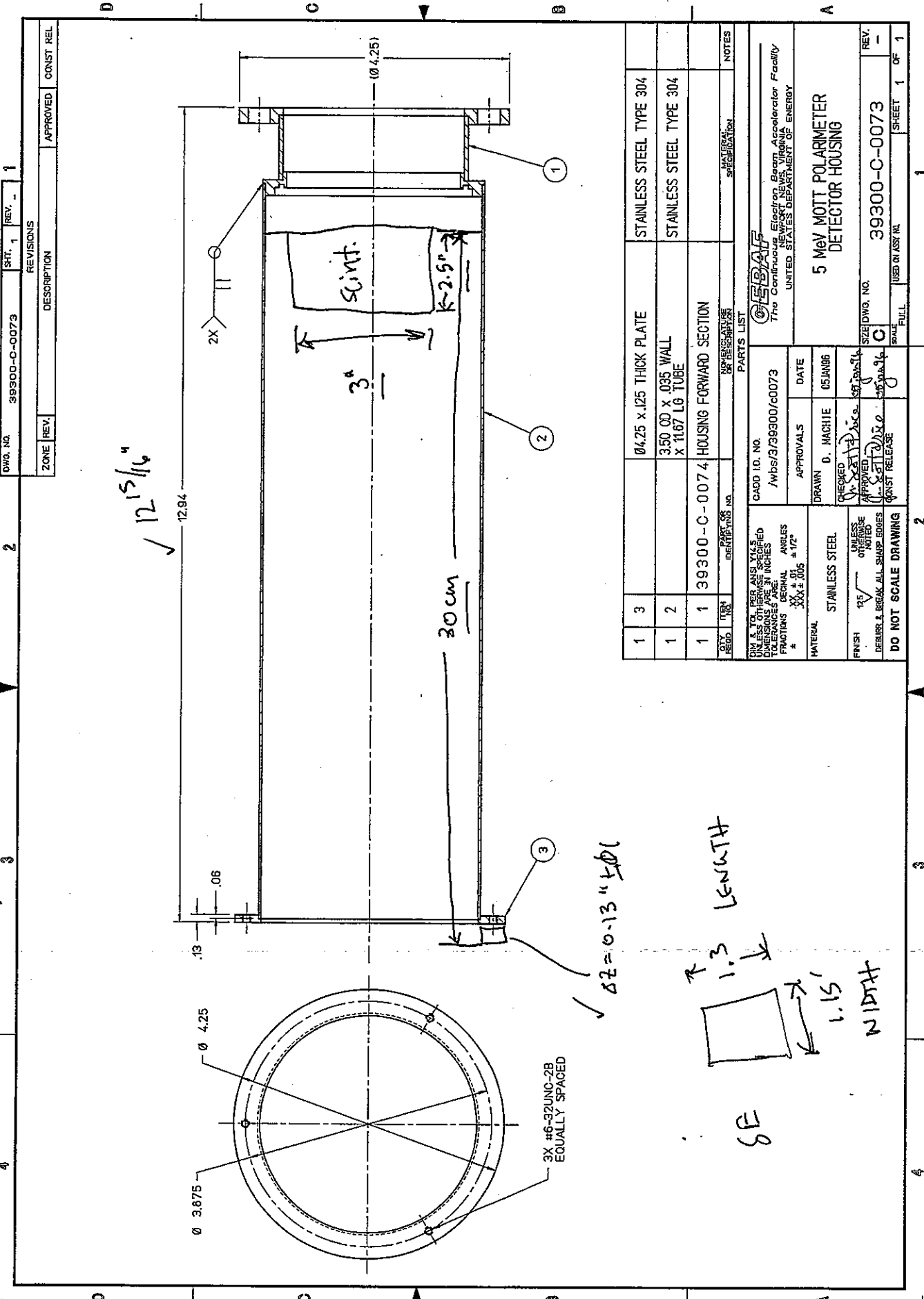
5 MeV MOTT POLARIMETER DETECTOR HOUSING END PLATE

39300-B-0072

SHEET 1 OF 1

looks to me sufficient.

A Drawing agrees w/ as-found. Notes indicate dimensions of E and relative location in the can. JT 2/4/13

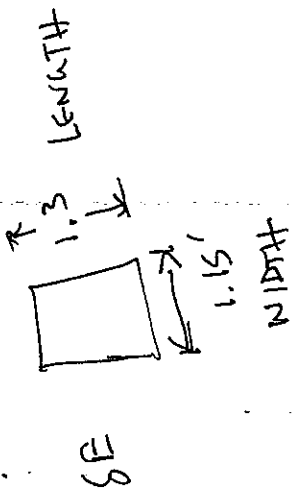


ITEM NO.	DESCRIPTION	QUANTITY	UNIT
1	3		04.25 x .125 THICK PLATE
1	2		3.50 OD X .035 WALL X 11.67 LG TUBE
1	1		39300-C-0074 HOUSING FORWARD SECTION

PARTS LIST		NOTES	
ITEM NO.	DESCRIPTION	ITEM NO.	DESCRIPTION
1	3	1	STAINLESS STEEL TYPE 304
1	2	1	STAINLESS STEEL TYPE 304
1	1		

DIM & TOL PER ANSI Y14.5 UNLESS OTHERWISE SPECIFIED TOLERANCES ARE IN INCHES FRACTIONS DECIMAL ANGLES .XXX ± .01 ± 17° .XXX ± .005		CAD ID. NO. /wds/3/39300/c0073
MATERIAL STAINLESS STEEL		APPROVALS DRAWN D. WACHIE DATE 05JAN06
FINISH 125 UNLESS OTHERWISE NOTED DEBUR & BREAK ALL SHARP EDGES		CHECKED APPROVED CONST RELEASE

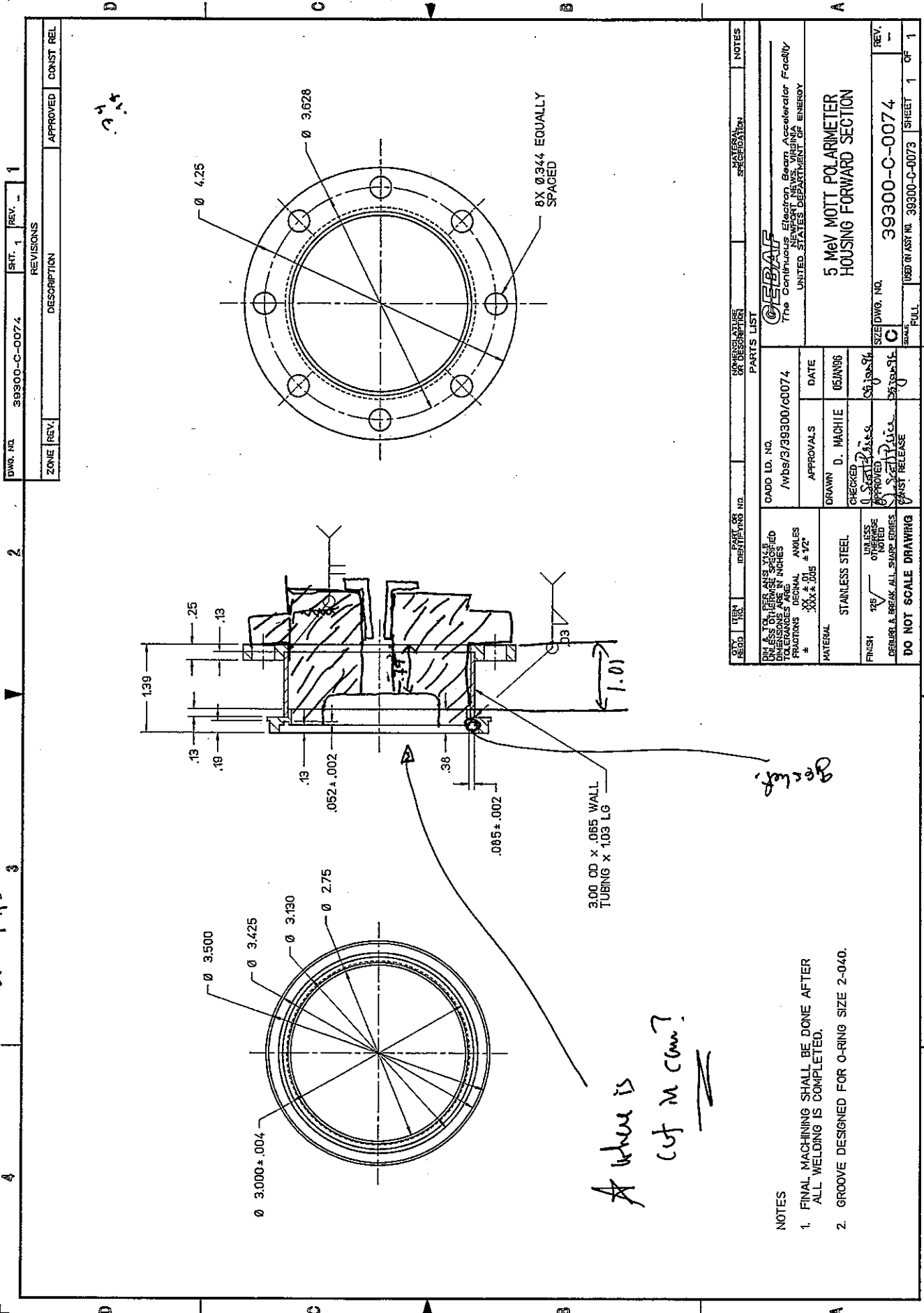
OGEBAF The Central Ohio Electron Beam Accelerator Facility NEWPORT NEWS, VIRGINIA UNITED STATES DEPARTMENT OF ENERGY	
5 MeV MOTT POLARIMETER DETECTOR HOUSING	SIZE DWG. NO. 39300-C-0073 SCALE C USED ON ASSY NO. SHEET 1 OF 1



Δ2 = 0.13" ± 0.01

✓ 12 13/16"

* Cut-out for ΔE is not shown. See 39300-0131 for penetration into open slot. Ju. 1/4/60



DWG. NO.	39300-C-0074	SHT. 1	REV. -
REVISIONS			
ZONE	REV.	DESCRIPTION	APPROVED
			CONST REL.

CITY		PART OR IDENTIFYING NO.		NUMBER AND DATE OF DESCRIPTION		MATERIAL SPECIFICATION		NOTES	
DIA. & TOL. PER ANS. Y&E UNLESS OTHERWISE SPECIFIED		CADD I.D. NO.		APPROVALS		DATE		PARTS LIST	
TOLERANCES ARE FRACTIONS DECIMAL ANGLES		/WBS/3/39300/60074		DRAWN D. MACHIE		05JUN60		5 MeV MOTT POLARIMETER HOUSING FORWARD SECTION	
# .001 ± .001 # 12" .002 ± .002				CHECKED		06JUN60		39300-C-0074	
MATERIAL STAINLESS STEEL				APPROVED		06JUN60		39300-C-0073	
FINISH 12/ UNLESS OTHERWISE SPECIFIED				CHECKED		06JUN60		1 OF 1	
DEBURR & BREAK ALL SHARP EDGES				APPROVED		06JUN60		1 OF 1	
DO NOT SCALE DRAWING				CHECKED		06JUN60		1 OF 1	

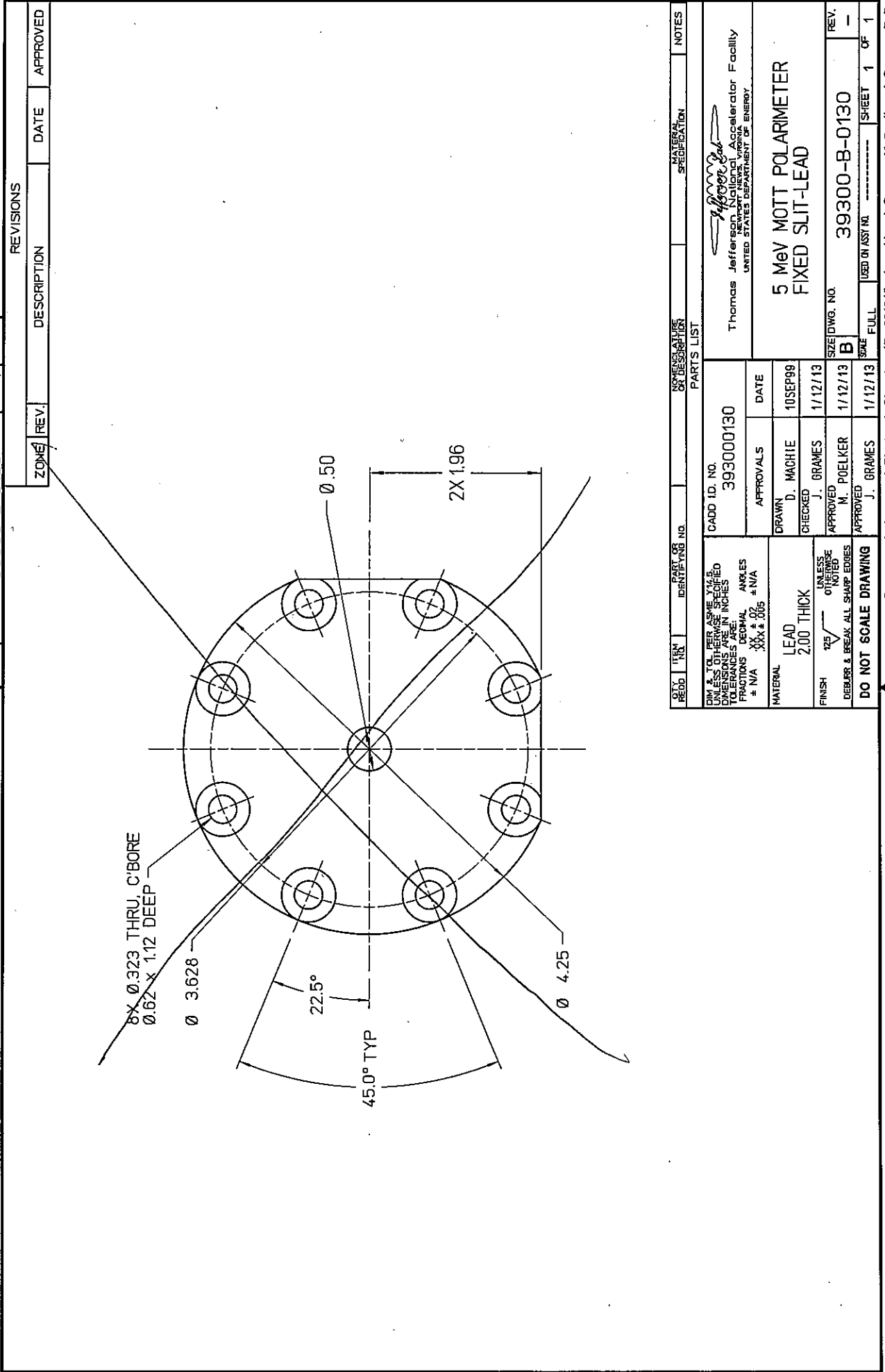
- NOTES
1. FINAL MACHINING SHALL BE DONE AFTER ALL WELDING IS COMPLETED.
 2. GROOVE DESIGNED FOR O-RING SIZE 2-040.

A where is cut in cam?

Beckley

★ Does not exist. Old part, will be moved to Pre-Jun 13 folder.

JLH 1/4/13



REVISIONS		
ZONE	REV.	DESCRIPTION

DATE	DATE	APPROVED

REV. NO.	DATE	DESCRIPTION	APPROVED

REV. NO.	DATE	DESCRIPTION	APPROVED

REV. NO.	DATE	DESCRIPTION	APPROVED

REV. NO.	DATE	DESCRIPTION	APPROVED

REV. NO.	DATE	DESCRIPTION	APPROVED

REV. NO.	DATE	DESCRIPTION	APPROVED

REV. NO.	DATE	DESCRIPTION	APPROVED

REV. NO.	DATE	DESCRIPTION	APPROVED

REV. NO.	DATE	DESCRIPTION	APPROVED

REV. NO.	DATE	DESCRIPTION	APPROVED

REV. NO.	DATE	DESCRIPTION	APPROVED

REV. NO.	DATE	DESCRIPTION	APPROVED

REV. NO.	DATE	DESCRIPTION	APPROVED

REV. NO.	DATE	DESCRIPTION	APPROVED

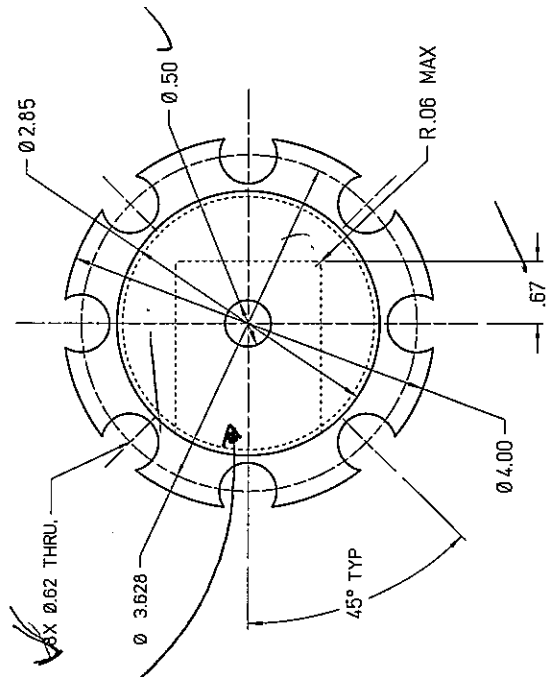
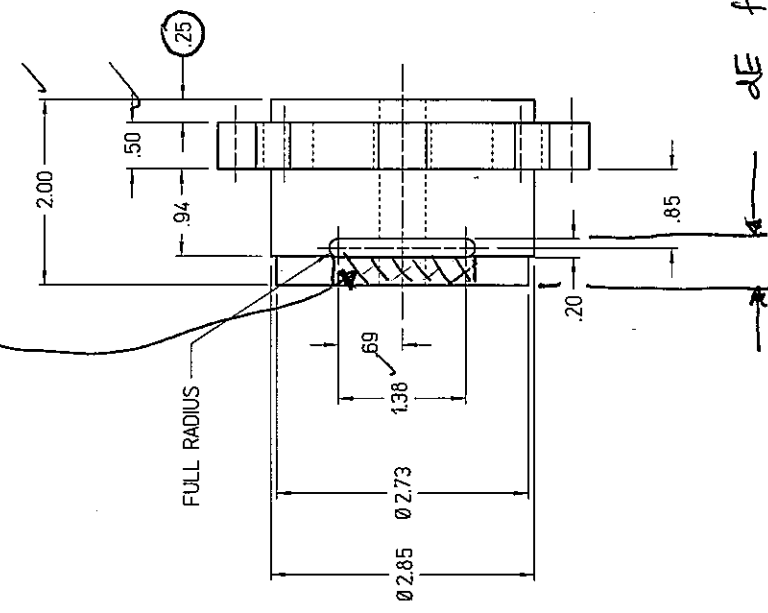
REV. NO.	DATE	DESCRIPTION	APPROVED

REV. NO.	DATE	DESCRIPTION	APPROVED

REV. NO.	DATE	DESCRIPTION	APPROVED

Document is Approved, Electronic Signature ID : 224345; signed by: J. Grames, M. Poelker, J. Grames, B. Paul

A Dimensions check ok, w/ exception that lead notch is fully cut away - 2/14/13



A dE fits in this 0.51" gap but where?

ZONE	REV.	DESCRIPTION	DATE	APPROVED

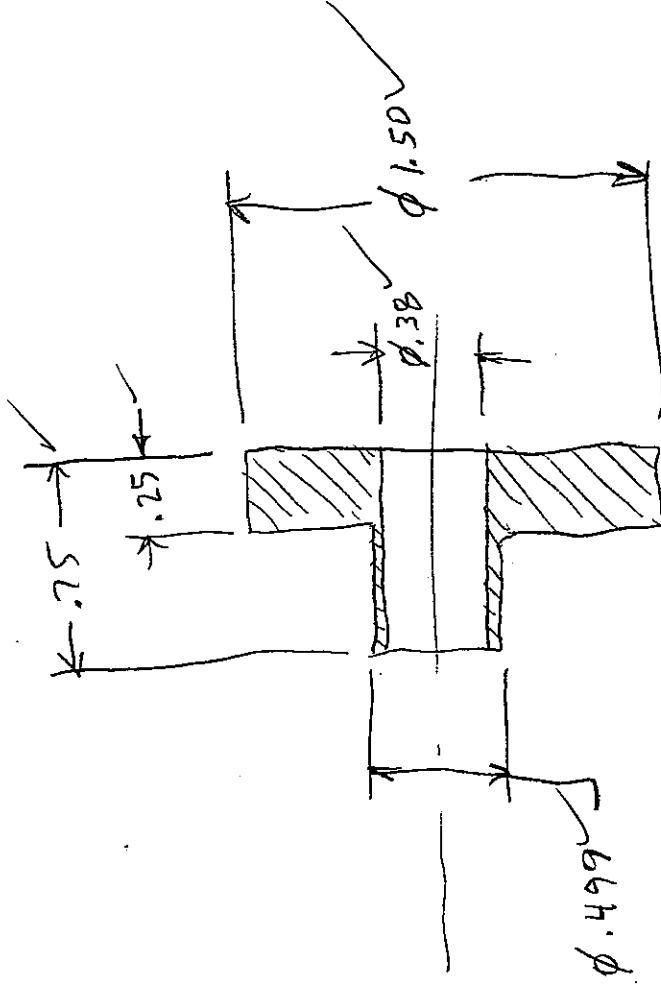
REV.	DATE	DESCRIPTION	APPROVED	DATE
1	1/12/13	ISSUED FOR FAB	J. GRAMES	1/12/13
2	1/12/13	ISSUED FOR FAB	J. GRAMES	1/12/13
3	1/12/13	ISSUED FOR FAB	J. GRAMES	1/12/13

UNLESS OTHERWISE SPECIFIED DIMENSIONS ARE IN INCHES TOLERANCES ARE: FRACTIONS DECIMALS ANGLES X.XX ±.005 X.X ±.01 X.XX ±.01	CAD ID. NO. 393000131	DATE 01NOV99	APPROVALS
MATERIAL LEAD	DRAWN D. MACHIE	CHECKED GRAMES	DATE 1/12/13
FINISH AS SUPPLIED	APPROVED H. POELKER	DATE 1/12/13	REV. 1
DESIGN & CHECK ALL SHEETS	APPROVED J. GRAMES	DATE 1/12/13	REV. 1
DO NOT SCALE DRAWING			

Thomas Jefferson National Accelerator Facility
 UNITED STATES DEPARTMENT OF ENERGY
 5 MeV MOTT POLARIMETER
 FIXED SLIT-LEAD

* checked ok

JA 2/19/13



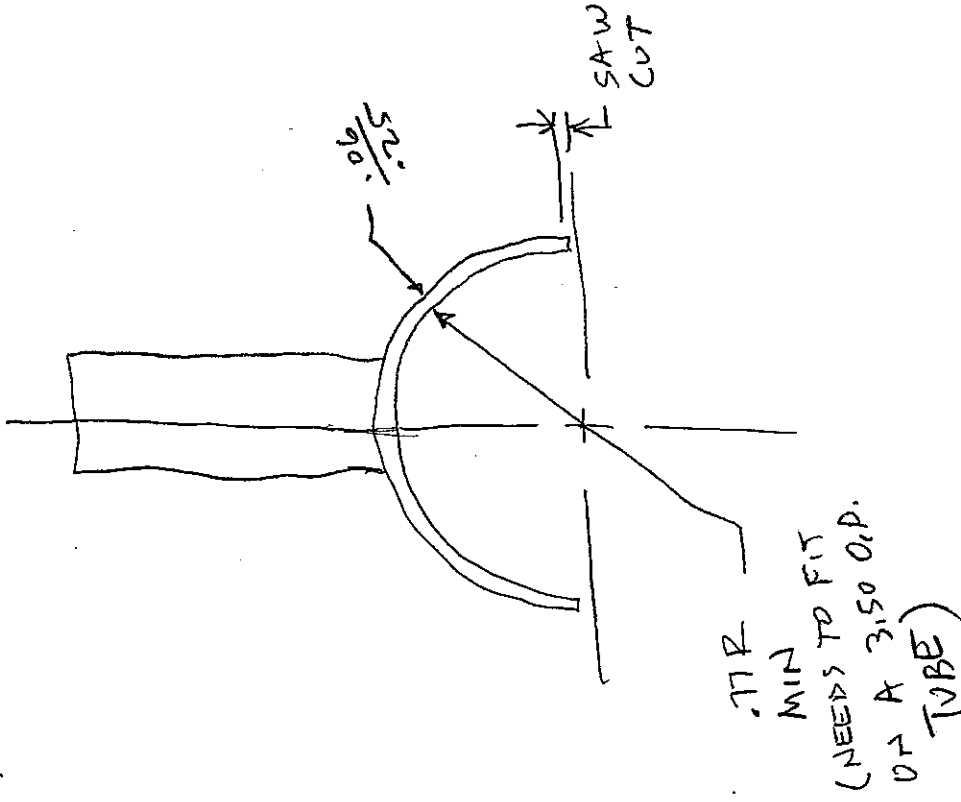
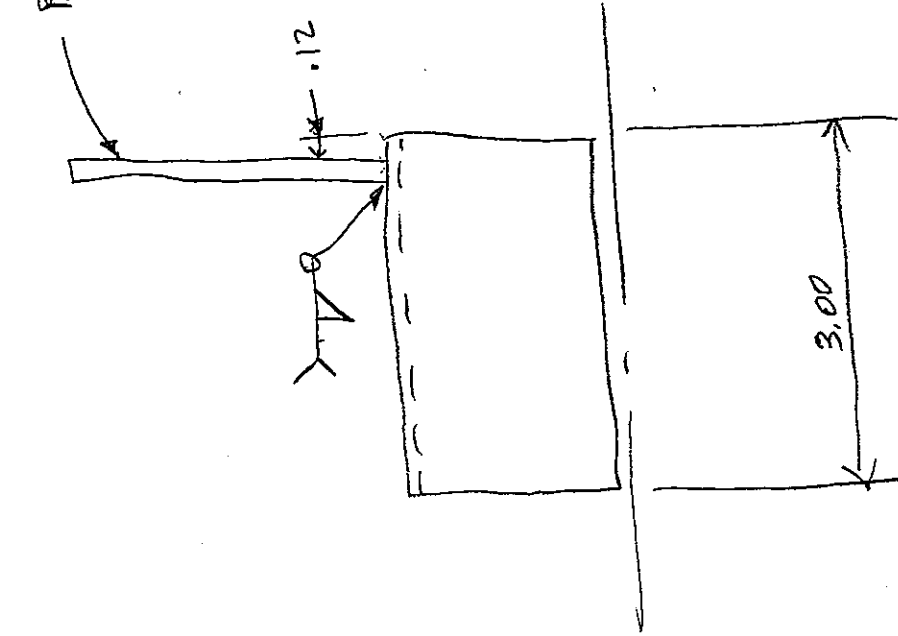
MATL: ALUM

QTY: 4 REQ'D

★ checked etc.

2/19/13
J.R.

BAR - .12 X 1.00 X 4.00 Lg



MATERIAL: STAINLESS STEEL OR ALUMINUM

QTY: 4 REQ'D

What is this gap?
Ju 2/1/13

Al windows.

10 mil ← verify.

Ports
* dwg

VAC.

AIR

* dwg. S.S. vac. chamber original

* dwg. Al sleeve.

* dwg. 1/8" extension

* dwg. Al. trumpet ladder new

ion pump.

last tube.

short tube

good physics.

- mult. sect.
- back. tuff

Al/S.S.?

Al sleeve

Al.

dwg# Collimator

cu?
Al?

window

handrest limit switch.

