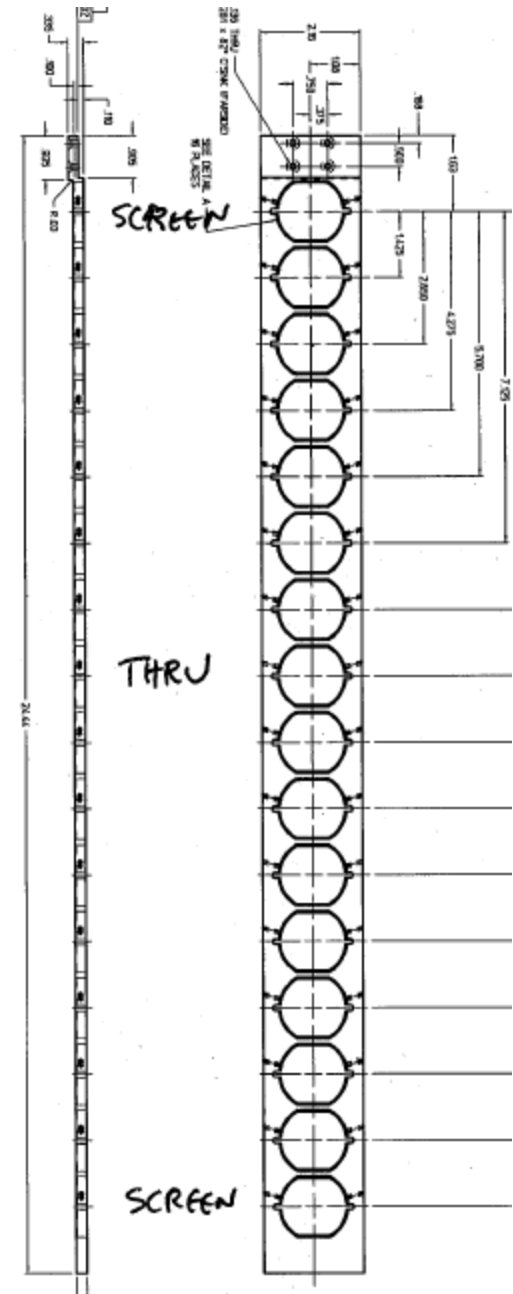


Target ladder

- ~~• (Jim) Clean Al ladder and viewscreen adapters~~
- ~~• (Joe/John) Unlock motor, swap ladder, rough alignment~~
- ~~• (John/Wes) Add final (extended) limit switch~~
- (Jim) Mount vacuum assembly in alignment lab (in progress)
- (Dahlberg) Fiducilize ladder yaw and vertical position of IN,OUT,targts (scheduled Monday 9/30)
- (Joe) Load gold targets (thru at center, 2 viewers at ends, remaining gold) (final step @ tunnel)

<u>Au(um)</u>	<u>#</u>	
0.050	(2)	✓
0.225	(2)	✓
0.350	(2)	✓
0.500	(1)	
0.625	(2)	
0.750	(3)	
0.870	(3)	
1.0	(2?)	
5.0	(1)	
15.0	(1)	



Target Video

- (Joe) Pre-existing video/light to be re-installed
- (Charlie) OTR calculation

Vacuum

- ~~(Joe/Jim) Replacement pump staged for next vent~~
- (Joe) Valve bugged closed until recovery $<1\text{E-}7$ torr

Detector

- (Riad/Marty) Close detector hut, baseline noise signal w/ accelerator off
- (Covert/Riad) High voltage ready?

DAQ/Screens

- (Joe) Control screens (magnets, viewers, ladder, high voltage, beam setup, old data analysis)
- (Riad) DAQ screens (scaler, FADC/TDC, analysis, display)

Dump plate

