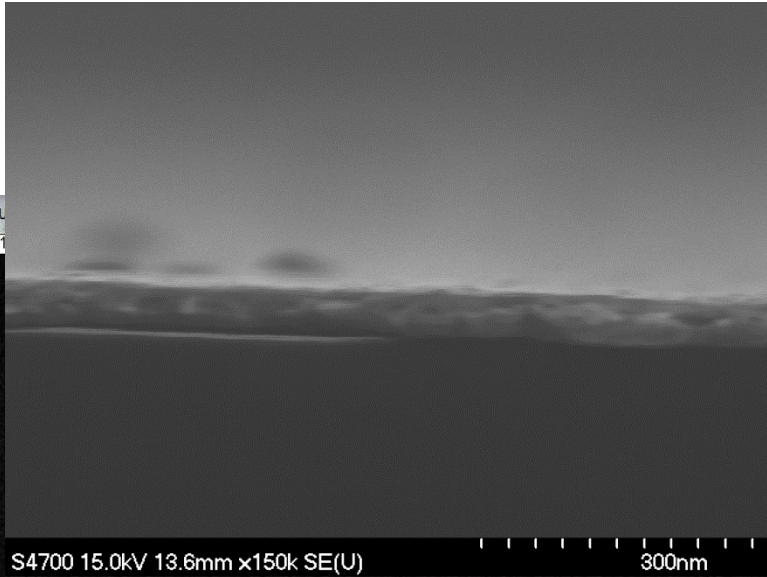


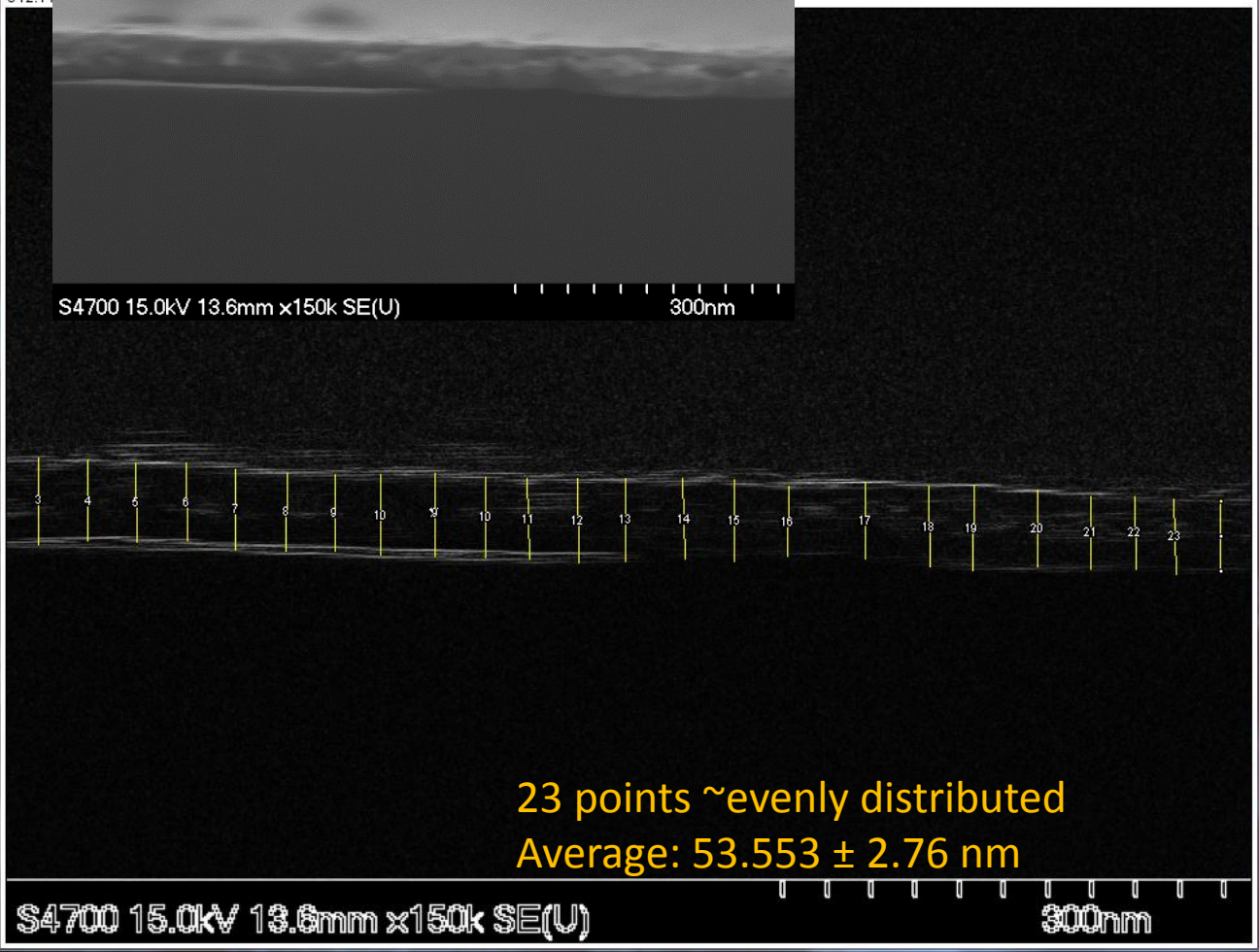
30 points evenly distributed
 Average: 0.792±0.021 microns

Results

File	Edit	Font	Results		
Label	Area	Perim.	Angle	Length	
10	0.002	0.772	-89.816	0.772	
11	0.002	0.781	-90	0.781	
12	0.002	0.788	-90	0.788	
13	0.002	0.778	-90	0.778	
14	0.002	0.778	-90	0.778	
15	0.002	0.775	-90	0.775	
16	0.002	0.788	-90	0.788	
17	0.002	0.788	-90	0.788	
18	0.002	0.778	-90	0.778	
19	0.002	0.772	-90	0.772	
20	0.002	0.778	-90	0.778	
21	0.002	0.778	-90	0.778	
22	0.002	0.795	-90	0.795	
23	0.002	0.765	-90	0.765	
24	0.002	0.785	-90	0.785	
25	0.002	0.785	-89.819	0.785	
26	0.002	0.828	-90	0.828	
27	0.002	0.838	-90	0.838	
28	0.002	0.838	-90	0.838	
29	0.002	0.801	-89.823	0.801	
30	0.002	0.781	-89.818	0.781	
31	Mean	0.002	0.792	-89.958	0.792
32	SD	5.066E-002	0.114	0.021	
33	Min	0.002	0.765	-90.182	0.765
34	Max	0.002	0.838	-89.628	0.838



Au
842.11



23 points ~evenly distributed
Average: 53.553 ± 2.76 nm

Results

File	Edit	Font	Results		
	Label	Area	Perim.	Angle	Length
3		35.492	53.516	-89.301	53.516
4		35.059	52.639	-89.284	52.639
5		36.357	54.386	-90	54.386
6		35.059	52.639	-91.432	52.639
7		34.626	51.754	-90	51.754
8		36.357	54.386	-90	54.386
9		37.223	56.140	-90	56.140
10		36.357	54.386	-90	54.386
11		36.357	54.414	-87.930	54.414
12		38.089	57.024	-88.683	57.024
13		37.223	56.140	-90	56.140
14		36.357	54.414	-87.930	54.414
15		36.790	55.263	-90	55.263
16		31.596	47.377	-91.591	47.377
17		34.626	51.754	-90	51.754
18		36.357	54.393	-89.310	54.393
19		38.089	57.024	-90.659	57.024
20		34.626	51.754	-90	51.754
21		32.895	49.123	-90	49.123
22		32.895	49.131	-89.236	49.131
23		33.760	50.907	-88.512	50.907
24	Mean	35.718	53.553	-89.733	53.553
25	SD	1.803	2.766	0.904	2.766
26	Min	31.596	47.377	-91.591	47.377
27	Max	38.954	58.772	-87.930	58.772