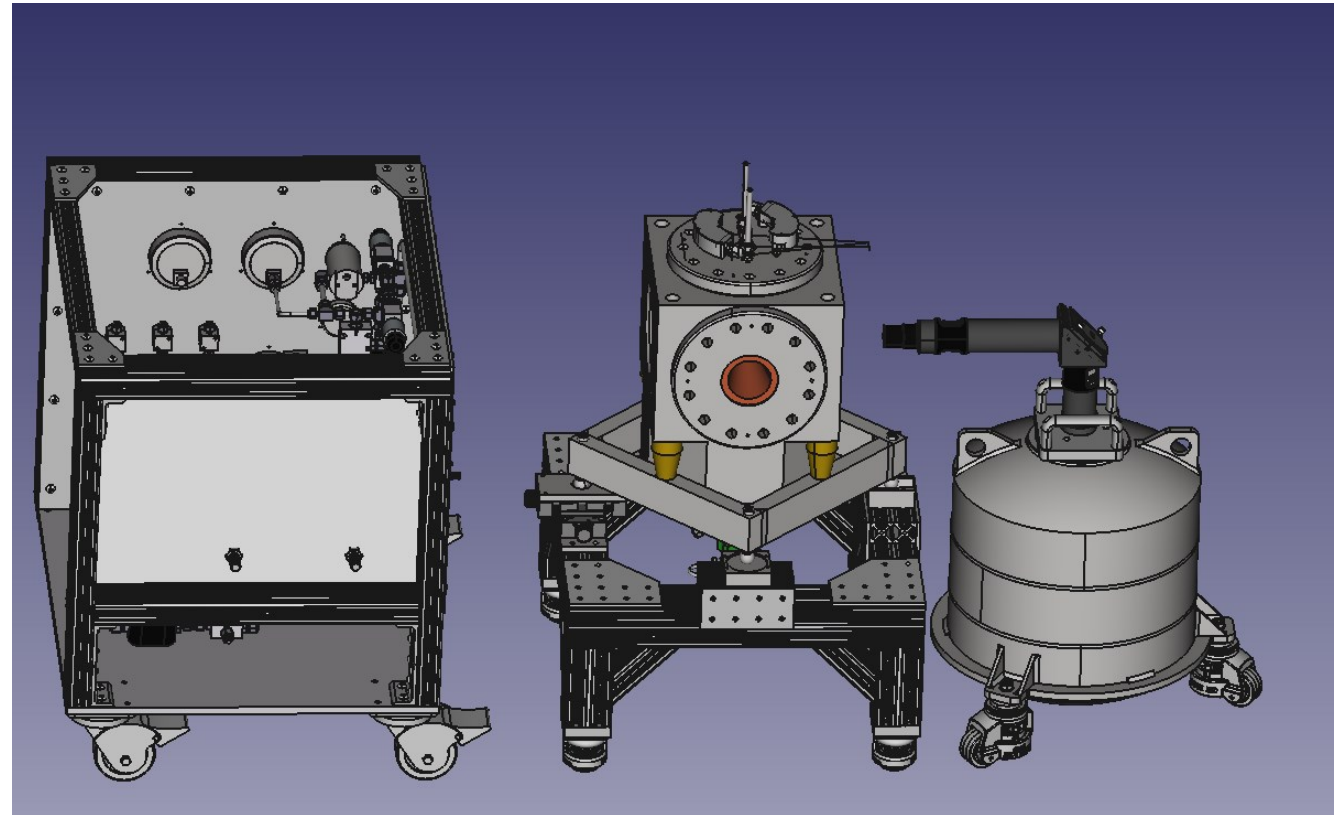


Bubble Update 12/22/2020

David Neto

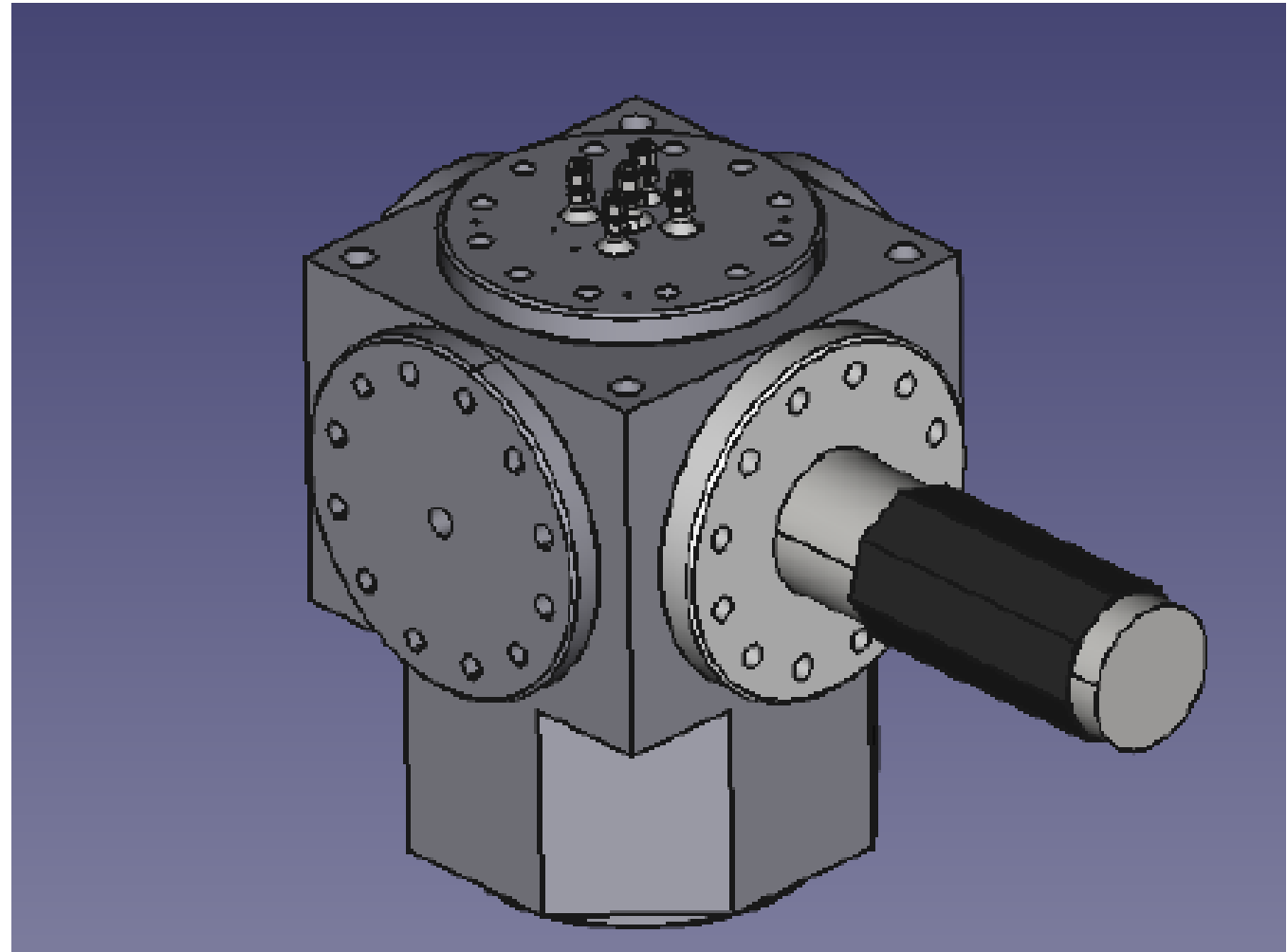
Brads Latest CAD Files

- Given (x,y,z) are relative to defined planes for each object. Not global as I thought 😞
- However, distances can manually be measured which is good enough moving forward



Whit's Geometry

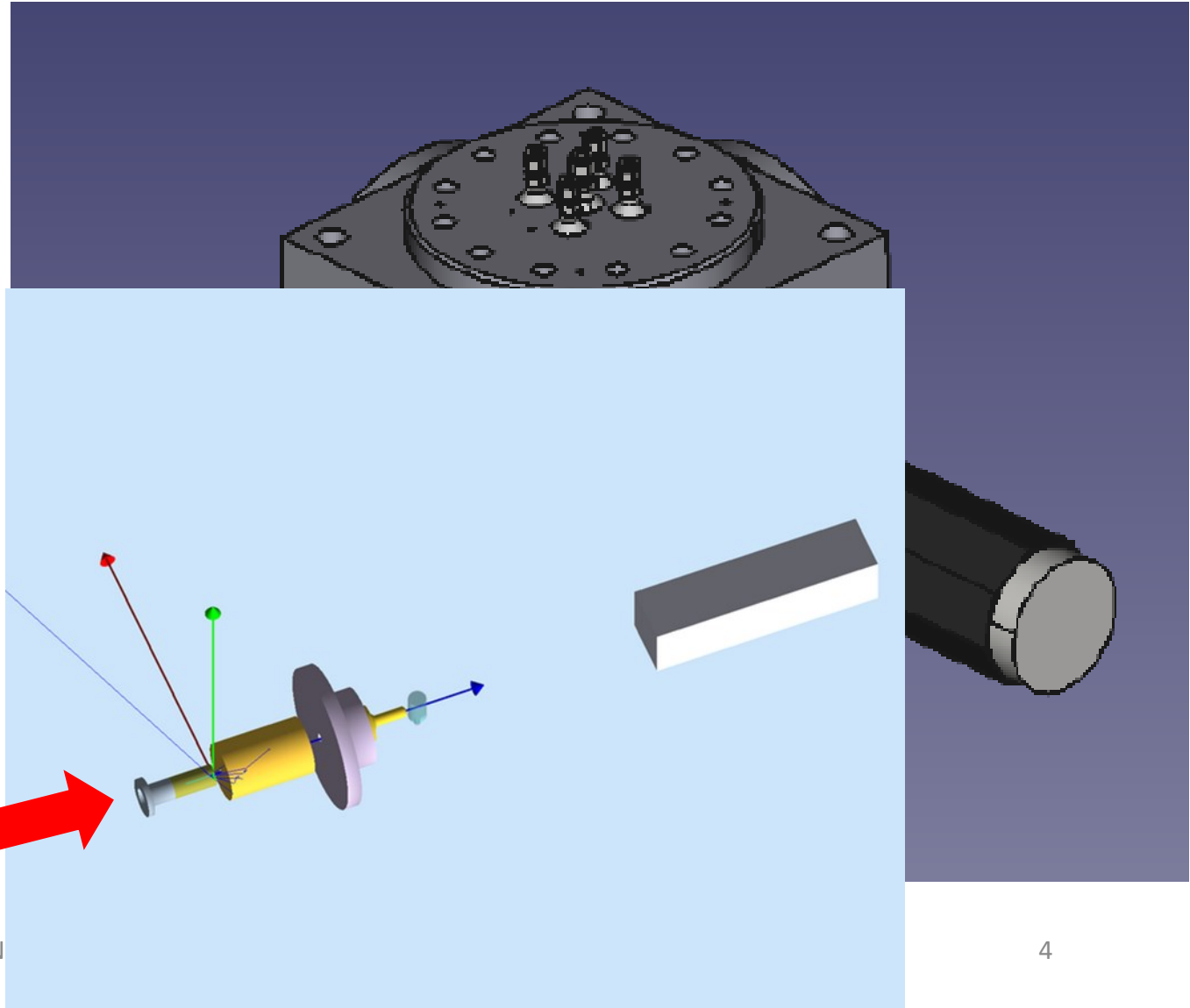
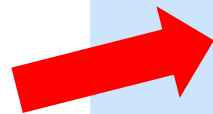
- From Whit's code we have 8 ply objects
 - Steel Structure
 - Entrance and Exit Flanges
 - Flange insert
 - Glass Cell and Kovar
 - Entrance and Exit Shims
 - Lead Pig
- Missing
 - Radiator
 - Collimator
 - Beam Dump



Whit's Geometry

- From Whit's code we have 8 ply objects
 - Steel Structure
 - Entrance and Exit Flanges
 - Flange insert
 - Glass Cell and Kovar
 - Entrance and Exit Shims
 - Lead Pig
- Missing
 - Radiator
 - Collimator
 - Beam Dump

These are
already setup
in old Geo



Using Two Geometries

master ▾

[detectors](#) / [forFun](#) / [fun.gcard](#)



maureeungaro making forFun example work

🔍 1 contributor

15 lines (9 sloc) | 366 Bytes

```
1 <gcard>
2
3     <option name="geometry" value="1000x800"/>
4
5     <detector name="sphere" factory="GDML"/>
6
7     <detector name="cad/" factory="CAD"/>
8
9     <option name="BEAM_P" value="proton, 1.0*GeV, 4*deg, 0*deg"/>
10
```

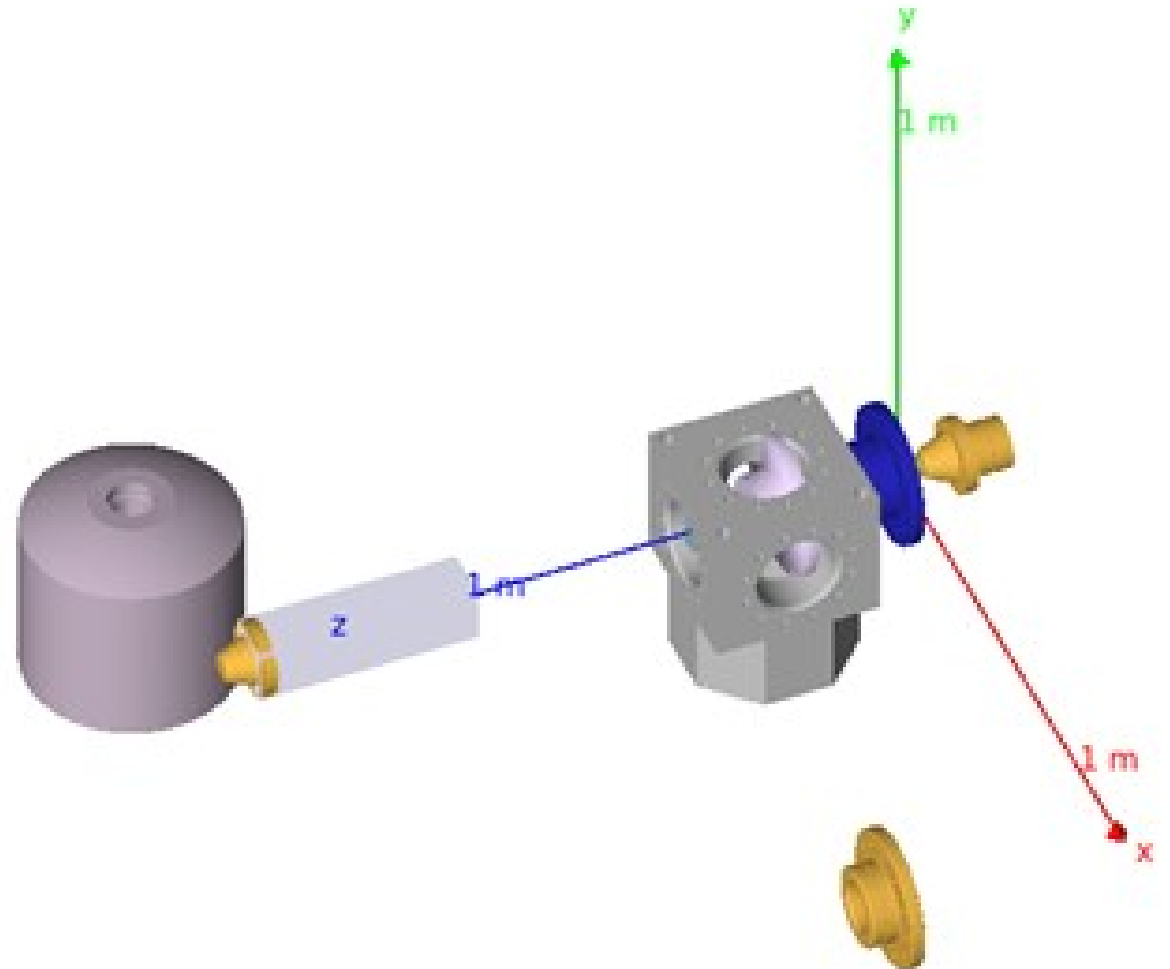
Using Two Geometries

```
<gcard>
  <detector name="cad/" factory="CAD"/>
  <detector name="bubble" factory="TEXT" variation="original"/>
  <option name="geometry" value="1400x1200"/>

  <option name="BEAM_P"          value="e-, 5.887*MeV, -3.58*mrad, 4.02*mrad"/>
  <option name="SPREAD_P"       value="0.00188*MeV, 0.358*mrad, 0.402*mrad"/>
  <option name="BEAM_V"        value="(0.095, 0.086, -5.)cm"/>
```

Using Two Geometries

```
<gcard>  
  <detector name="cad/" factory="C  
  <detector name="bubble" factory=  
  <option name="geometry" value="1  
  
  <option name="BEAM_P" va  
  <option name="SPREAD_P" va  
  <option name="BEAM_V" va
```



Moving Forward

- We have new geometry ready to go
 - Double check the validation distances
 - Distance of collimator to cell
 - Distance of radiator to cell
 - Etc...
 - Clean my directory up and prep to merge with the main Detectors repo
- For Batch Farm
 - Access to Accelerator group is for storage
 - 1E+9 Events ~ 1GB ROOT File
 - Going to call after this meeting to get this setup