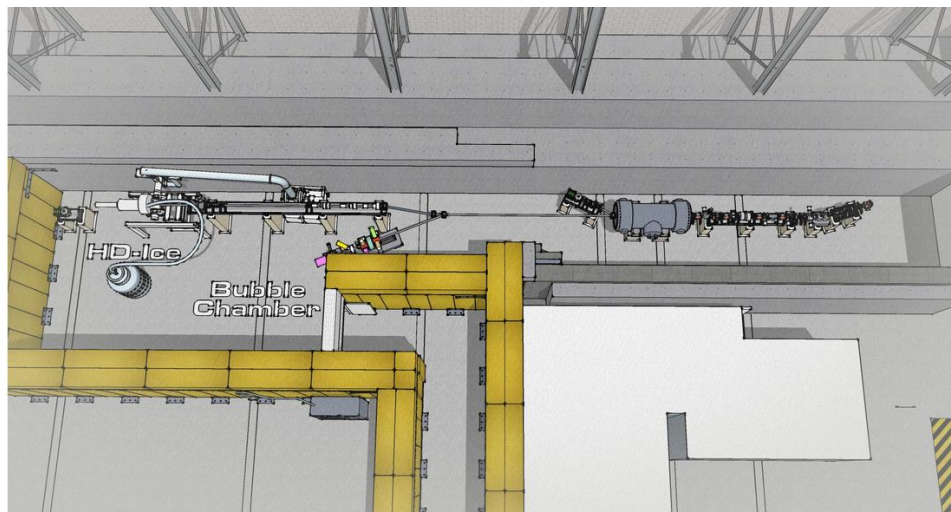
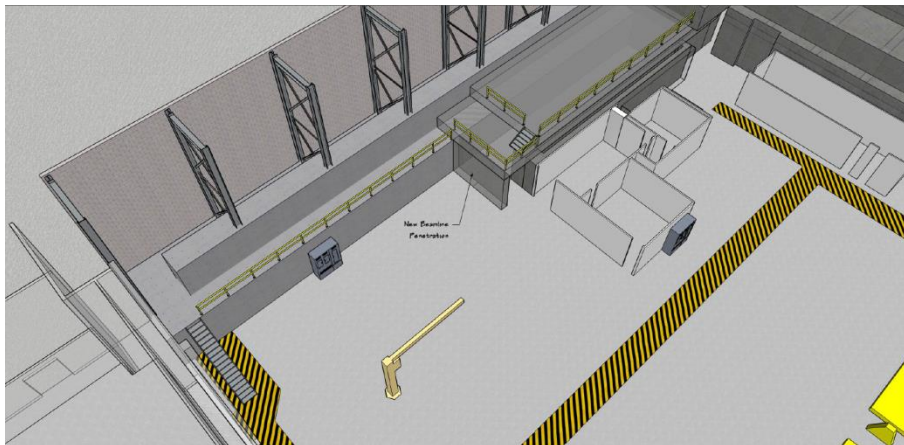
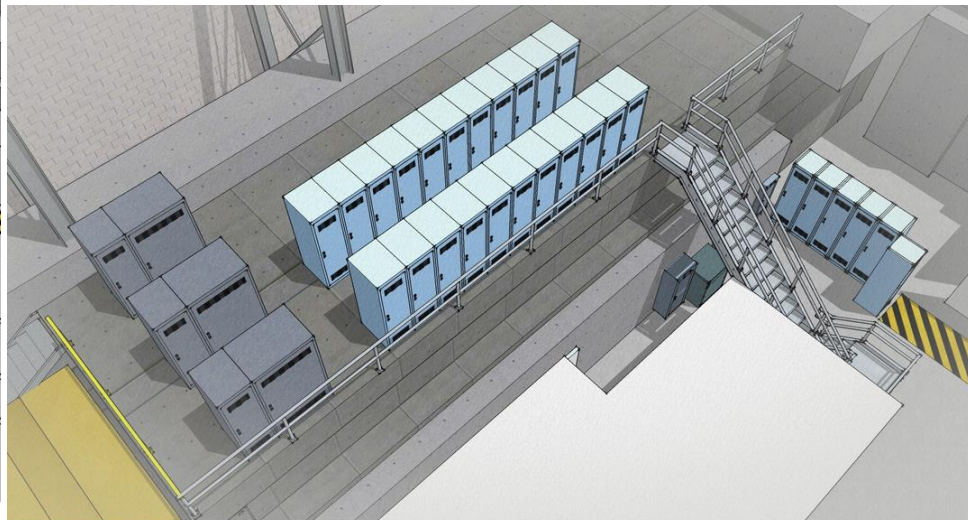


Need to finalize entry/exit

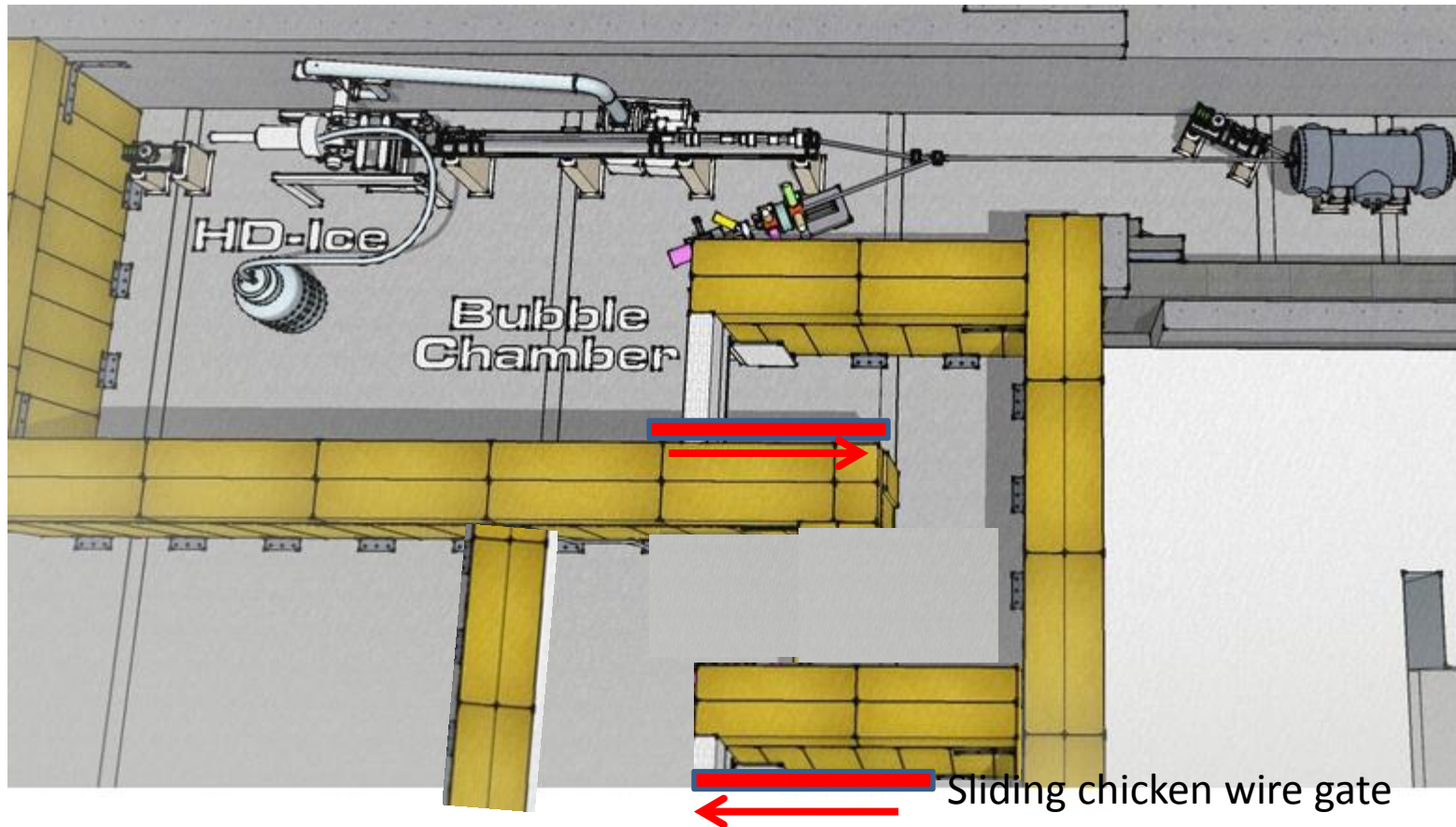


UITF as imagined



need to refine rack layout, AC power, add stairs

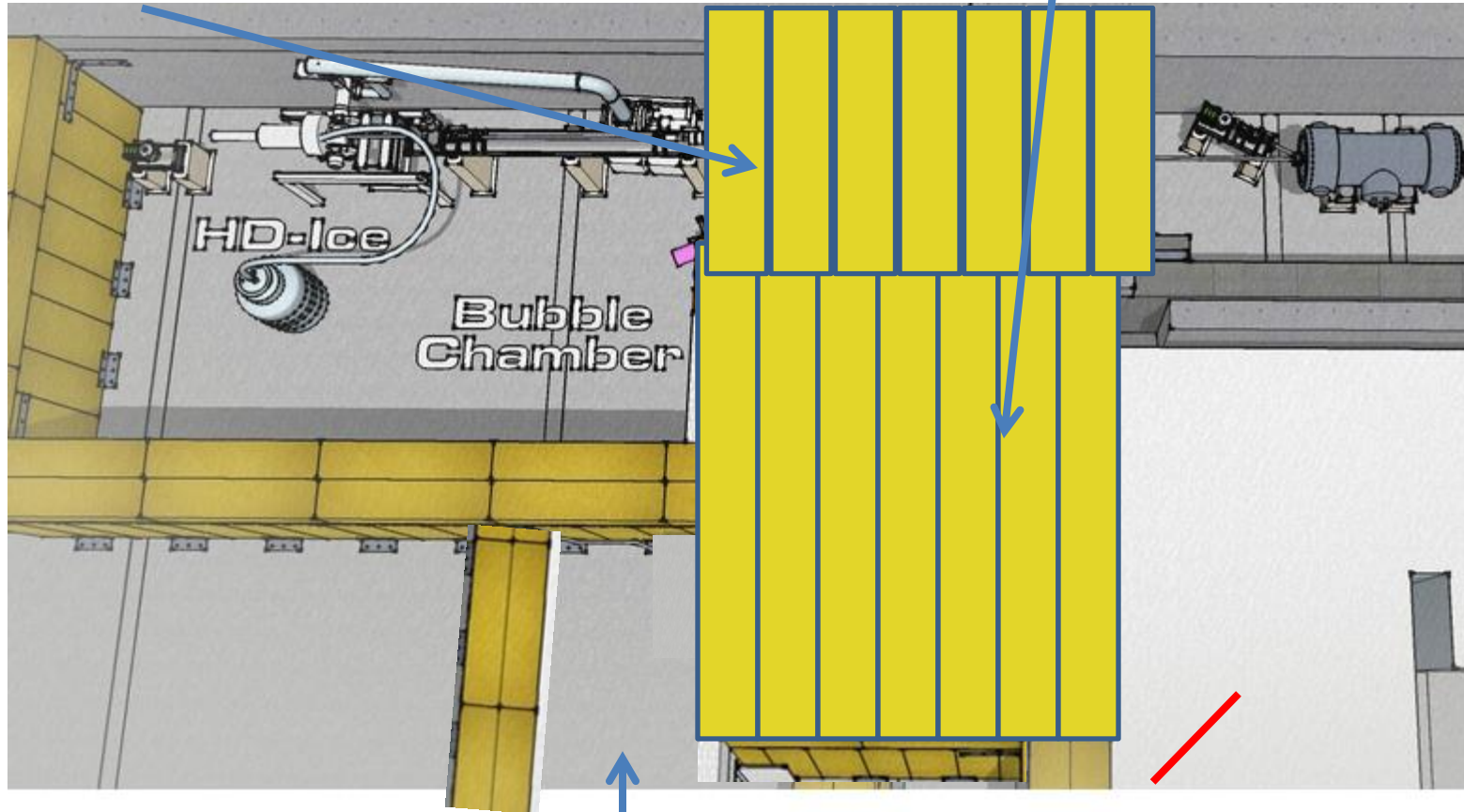
Vashek prefers the entry/exit shown below, over the one shown previous page



Ventilation concerns require chicken wire gate that slides across opening, and contacting a mag lock sensor for PSS. We can have two gates if required by Bob May. Of course, prefer just one...Christine Snetter to advise us re: life safety concerns

Need to be able to roll the big dewar through this labyrinth, Kevin to get dimensions but suspect 6' width to be adequate

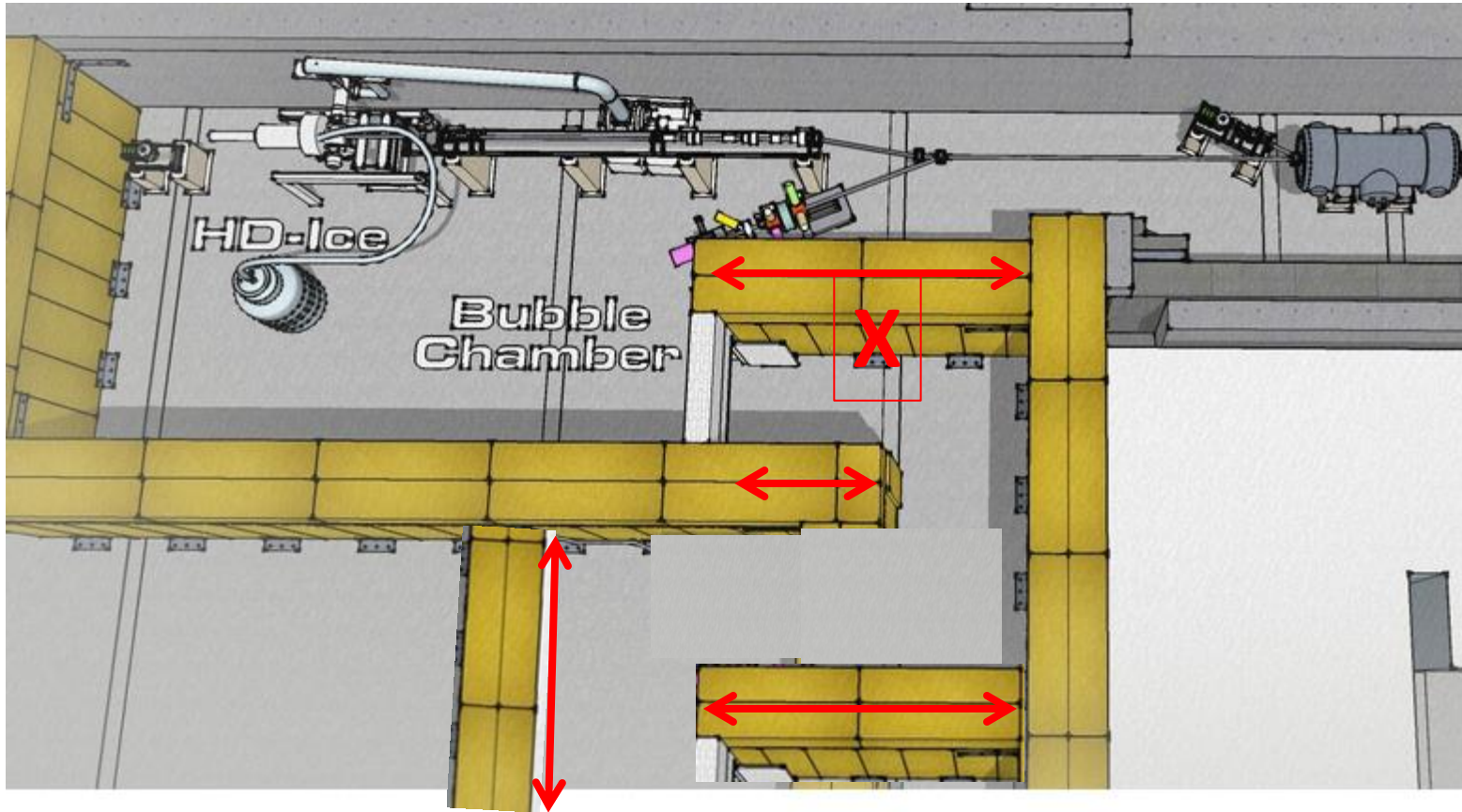
U shaped entry might make it easier to add ceiling. First use longer ceiling tiles to span the "U". Then use short ceiling tiles to span the width of original cave, like the three we will remove next week



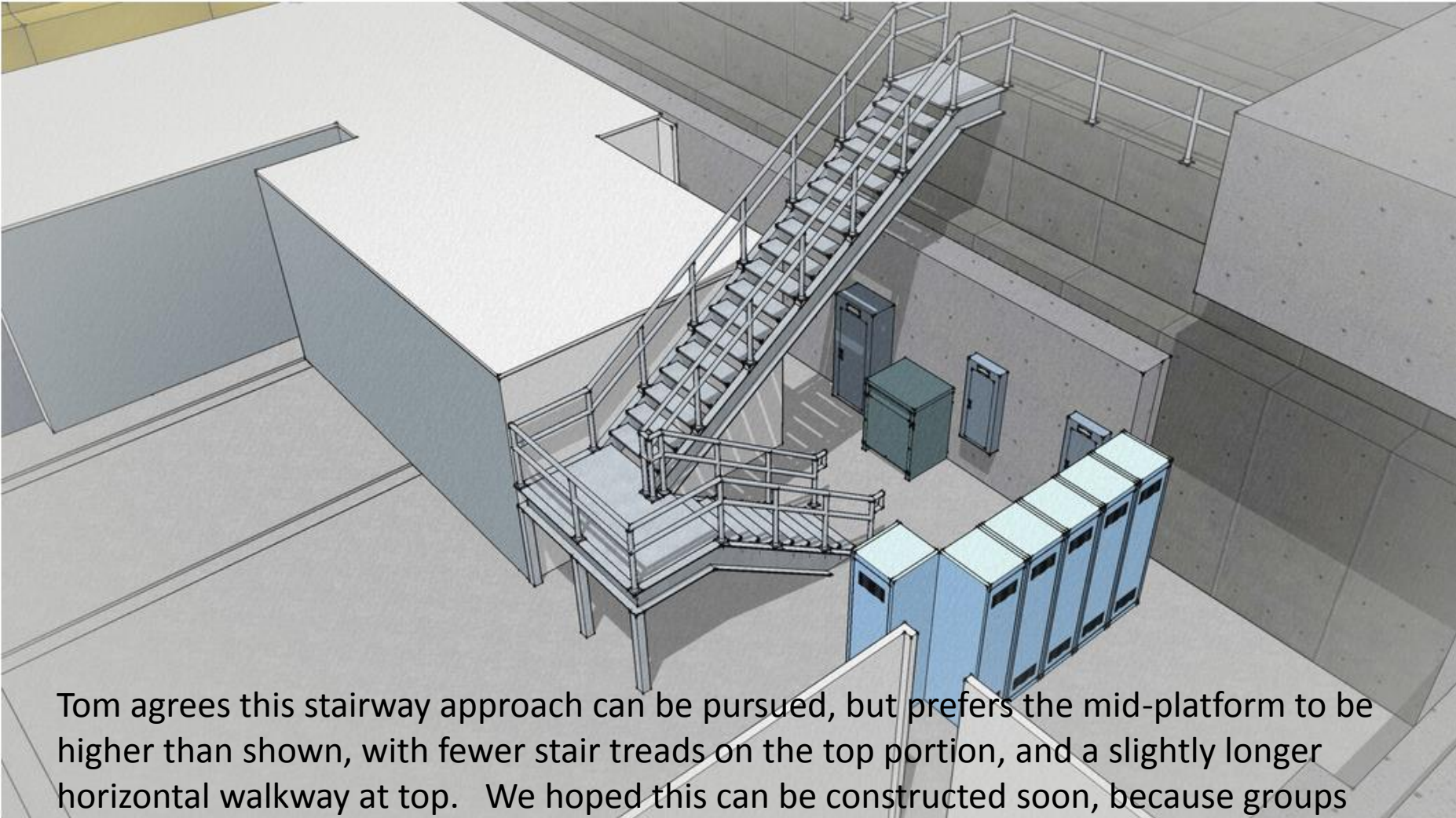
No Ceiling tiles required here

A door to control room can be added here

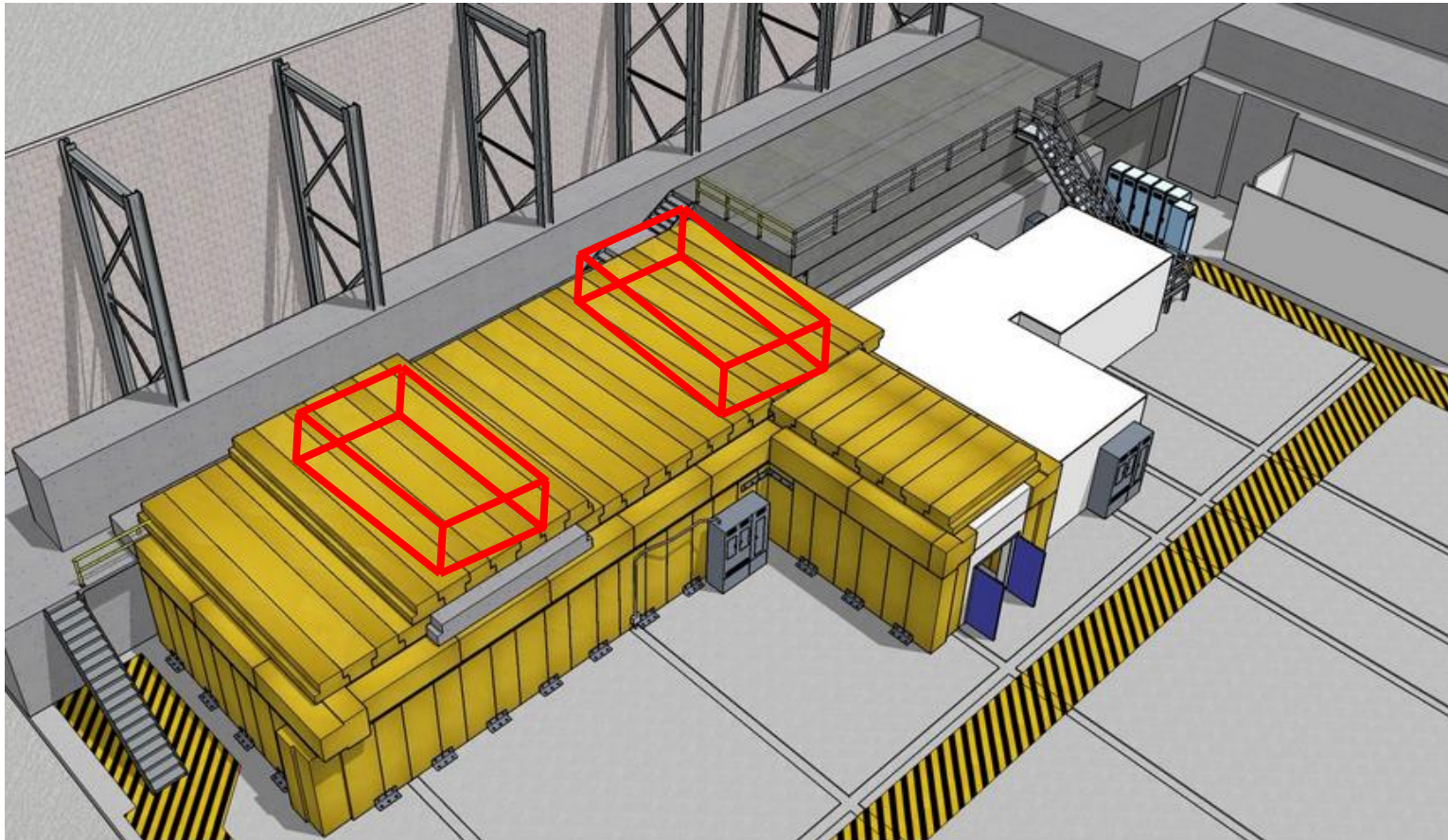
In return for extra space, Rolf can have all the space where I have my storage lockers now



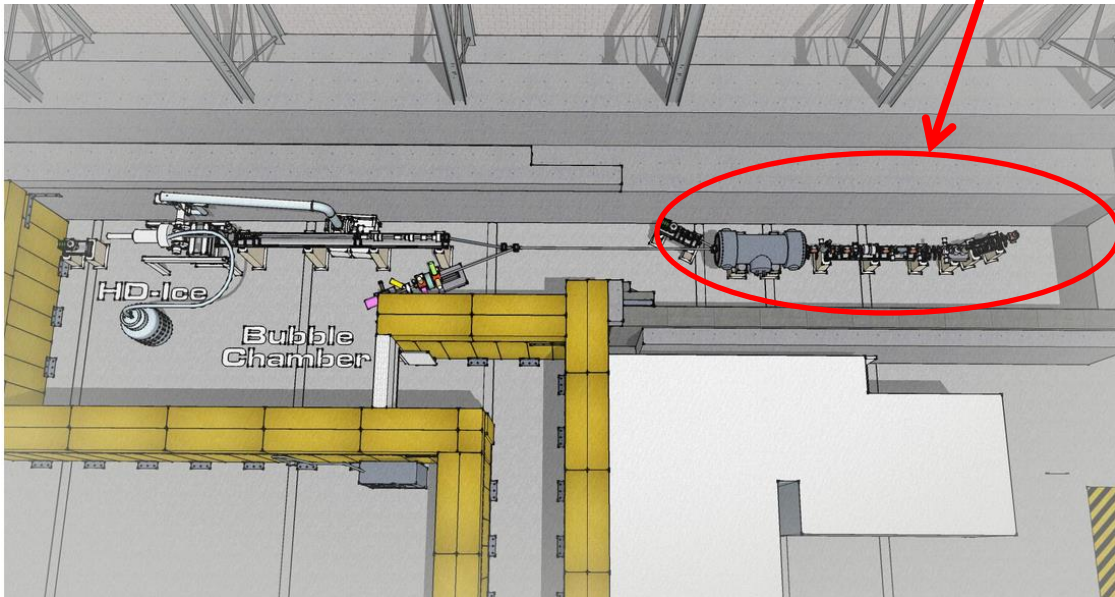
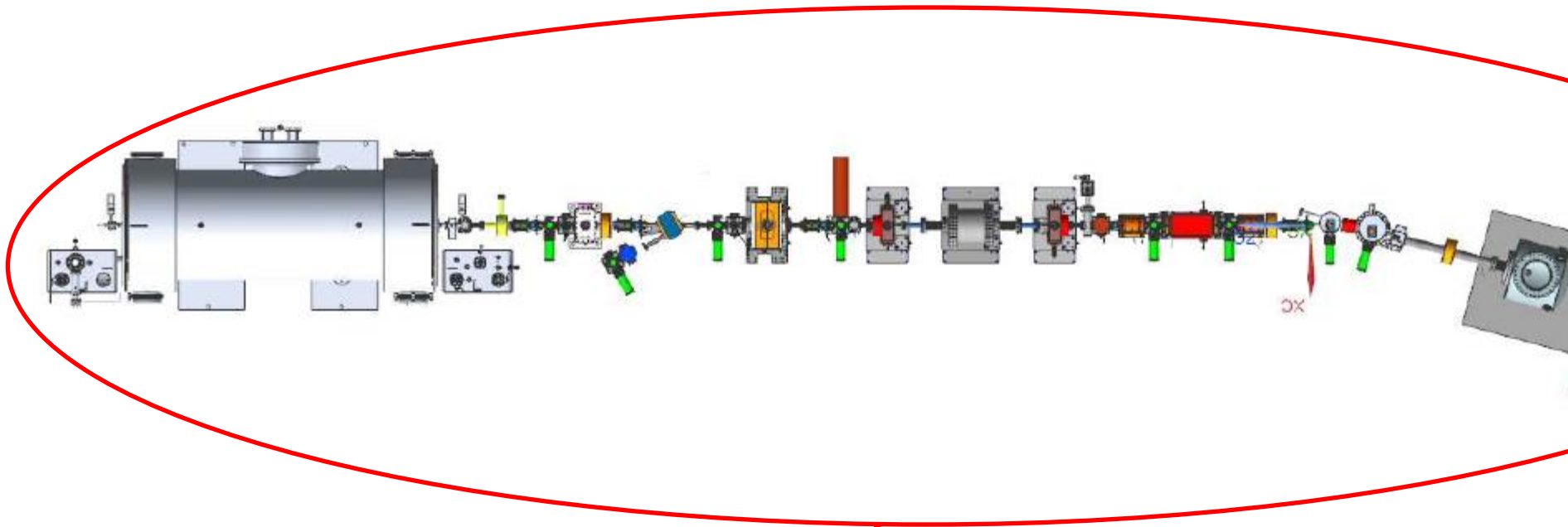
Assuming everyone agrees with this geometry, we need to work with Vashek to specify dimensions shown in red. I prefer dimension **X** to be as short as possible

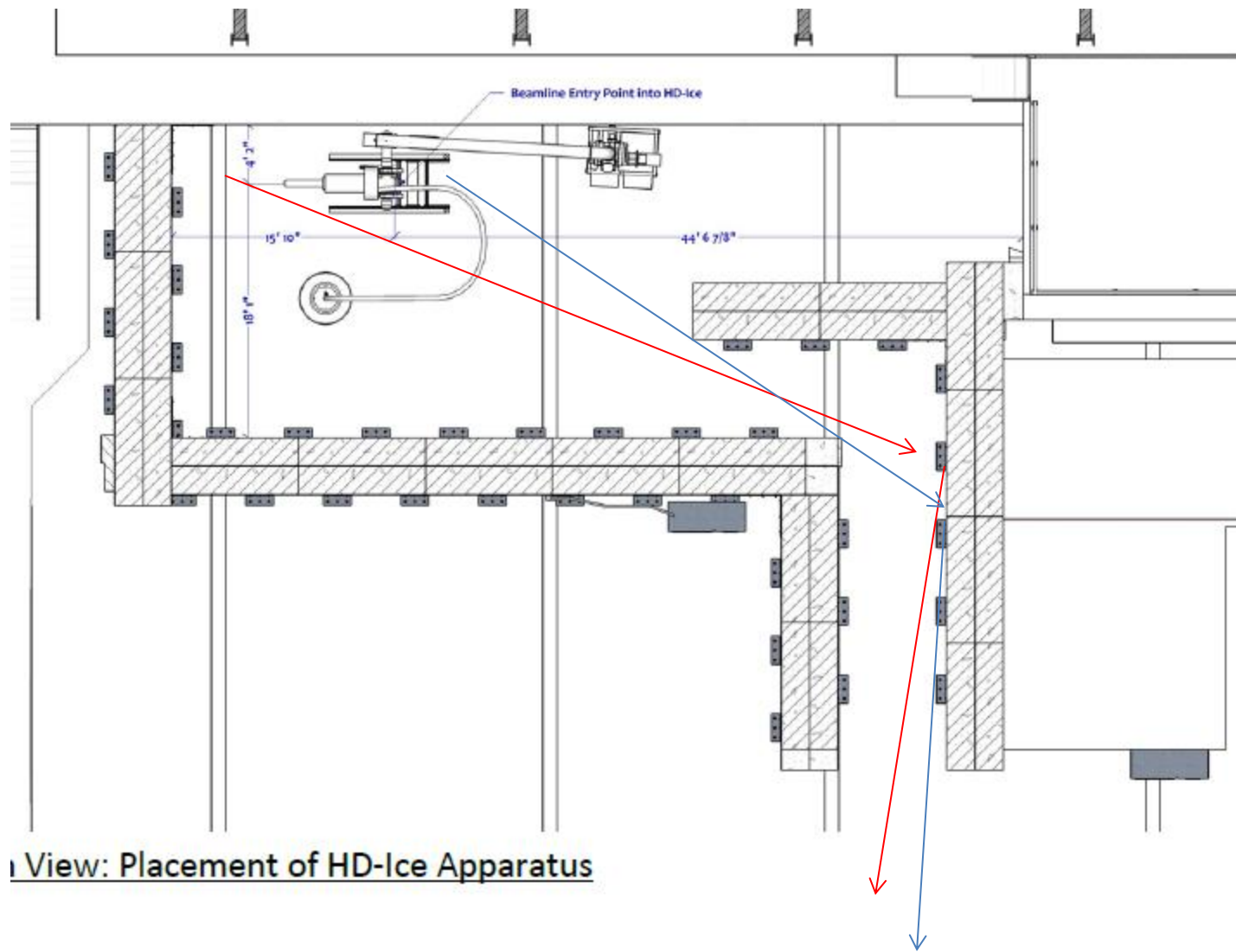


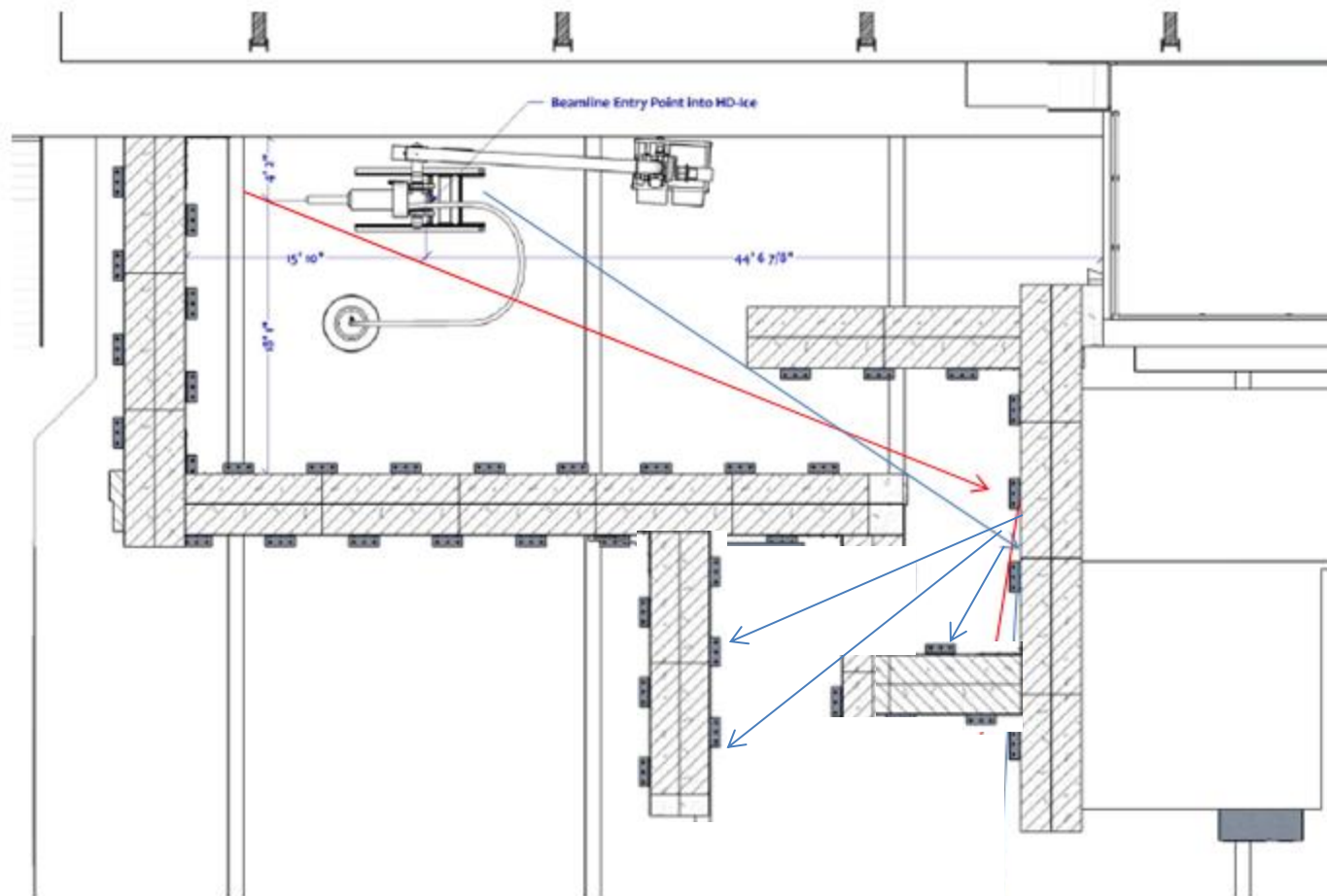
Tom agrees this stairway approach can be pursued, but prefers the mid-platform to be higher than shown, with fewer stair treads on the top portion, and a slightly longer horizontal walkway at top. We hoped this can be constructed soon, because groups need access to top of Cave1, including SRF and Hall B magnet people. Once the demo work happens at Cave1, we fear there will be no access to top of cave, despite the ladder that exists today (is the ladder for emergency use only?)



We mentioned to Tom and Suresh that toward the end of the project, we will need a moveable cage/platform that can be temporarily placed over the opening in Cave2, produced when the HDIce folks move the target in place. This platform with rails will make it easier for the guys to work on target without falling. We think it reasonable to assume the cage can live on top of UITF when not in use. Craned in place and craned away for storage







View: Placement of HD-Ice Apparatus