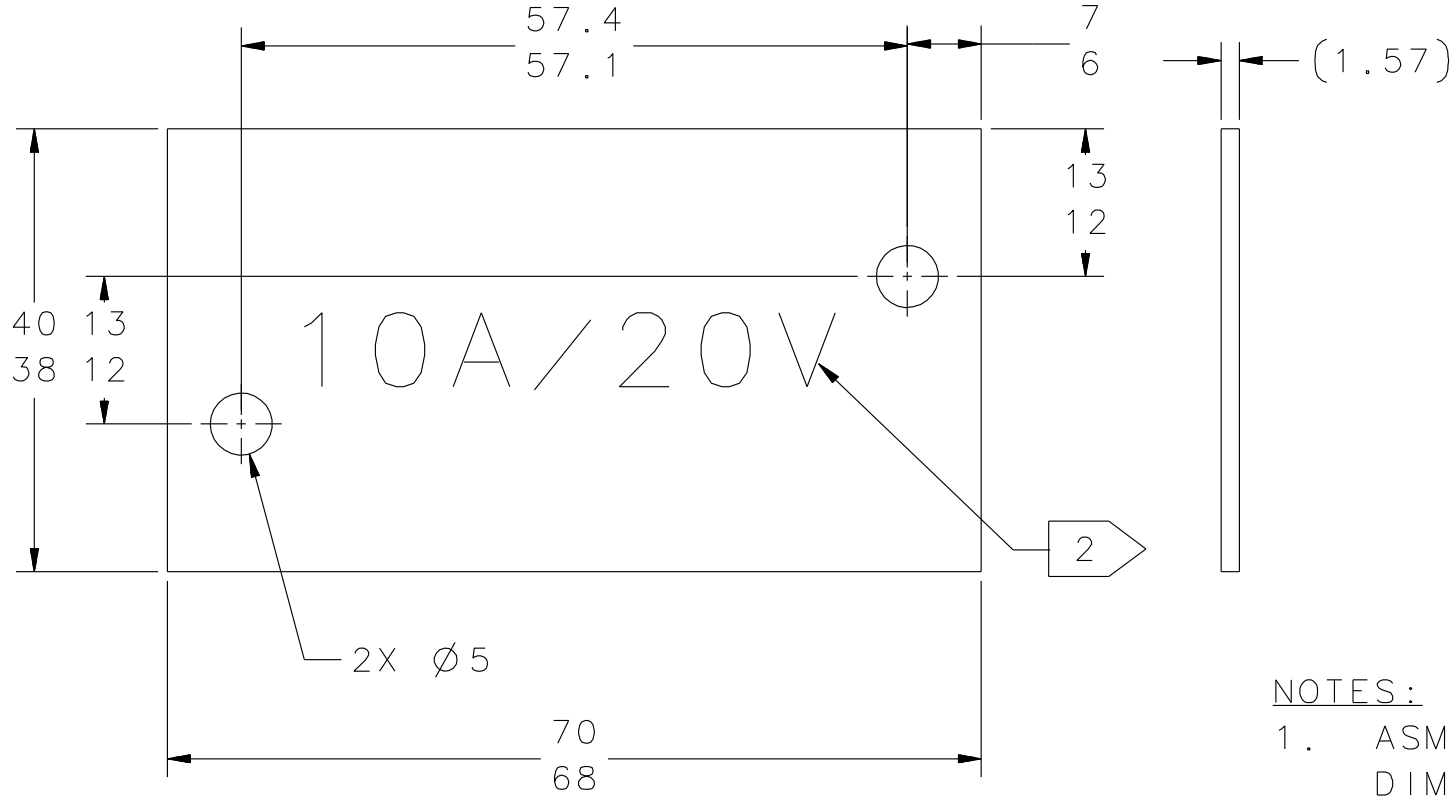



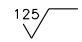
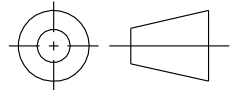
| REVISION HISTORY | | | |
|------------------|-------------|------|----------|
| REV | DESCRIPTION | DATE | APPROVED |



NOTES:

1. ASME Y14.5-2009 IS USED FOR ALL DIMENSIONING AND TOLERANCING. ALL DIMENSIONS IN MILLIMETERS UNLESS OTHERWISE NOTED.

2. STENCIL .50" HIGH CHARACTERS WITH RED PAINT.

| | | | | |
|---|--|------------------------------|--|--------------------------------------|
| <small>DIM & TOL PER ASME Y14.5 UNLESS OTHERWISE SPECIFIED DIMENSIONS ARE IN INCHES TOLERANCES ARE:</small> <small>FRACTIONS DECIMAL ANGLES</small> <small>± N/A .X ± .1 ± .50°</small> <small> .XX ± .01</small> <small> .XXX ± .005</small> | MATERIAL NEMA GRADE G-10 EPOXY RESIN .062" THK STOCK | | United States Department of Energy  Thomas Jefferson National Accelerator Facility Newport News Virginia | |
| | FINISH MACHINED SURFACES 125  UNLESS OTHERWISE NOTED DEBURR & BREAK ALL SHARP EDGES | | MAG CORRECTOR DL DL TERMINAL COVER | |
| THIRD ANGLE PROJECTION  | | DO NOT SCALE DRAWING | | |
| DRAWN S.A. GREGORY | | DATE 26FEB14 | | SIZE B |
| | | DWG. NO. JLO011326 | | REV. - |
| | | SCALE 2:1 | | USED ON ASSY NO. JLO008102 |
| | | SHEET 1 OF 1 | | |