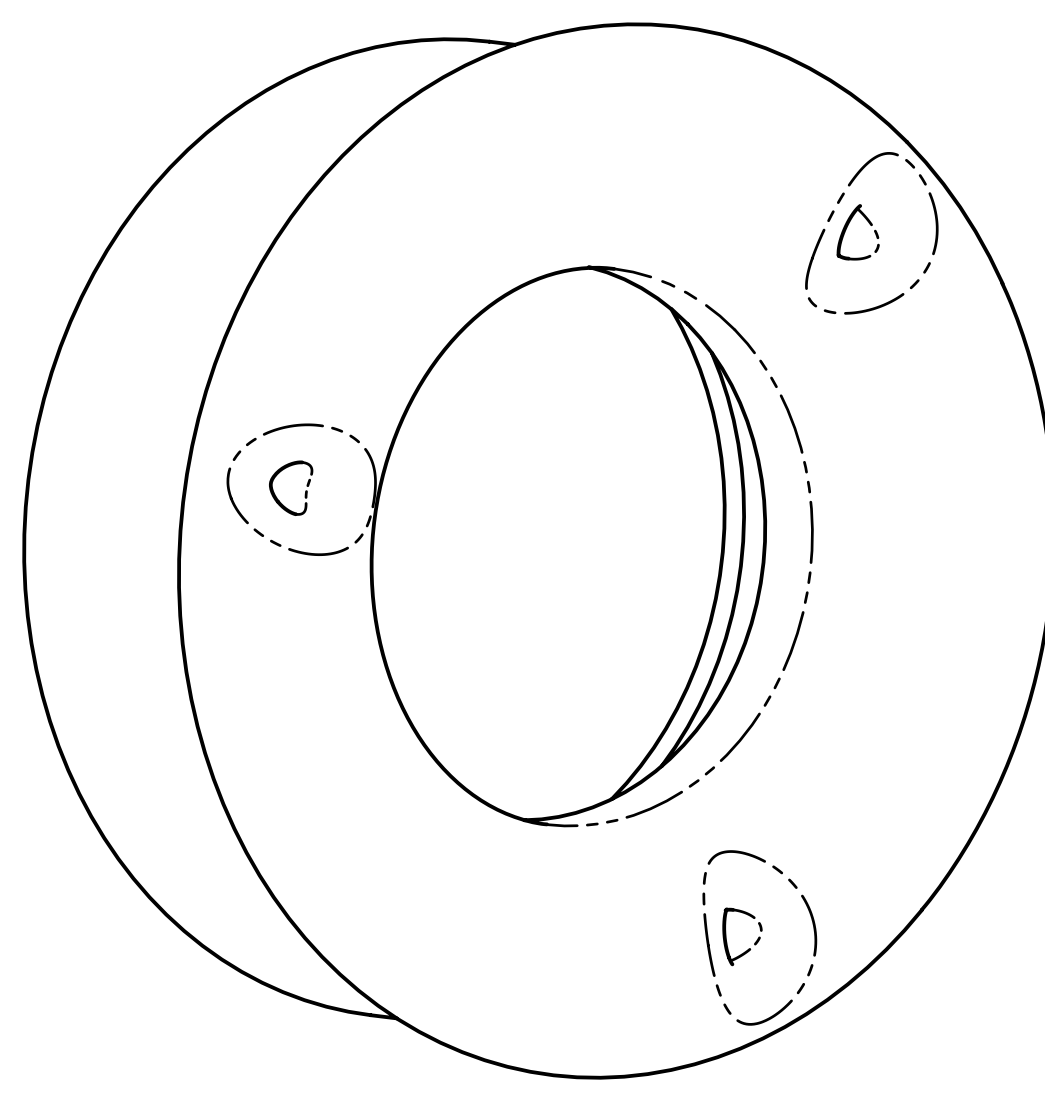
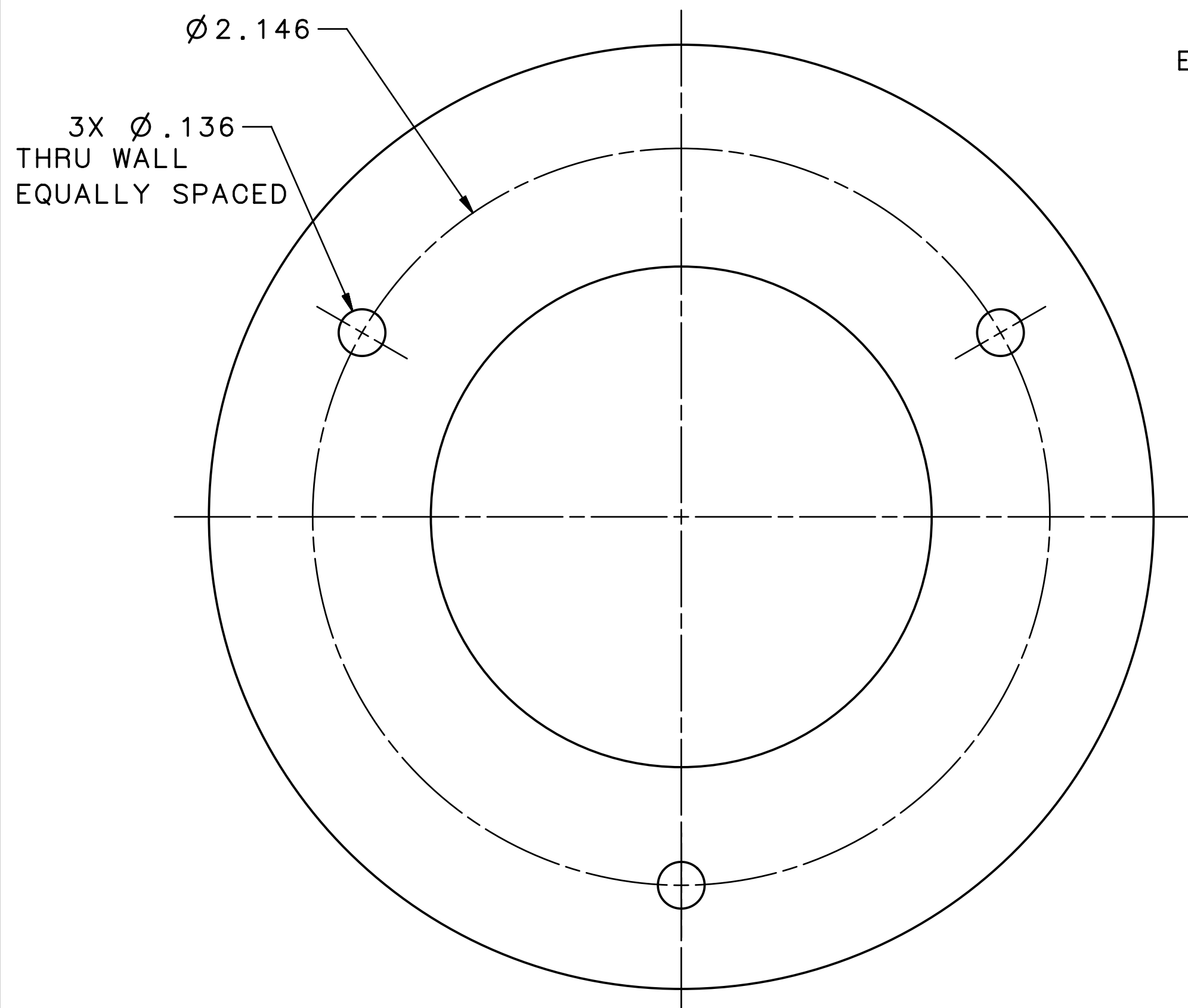


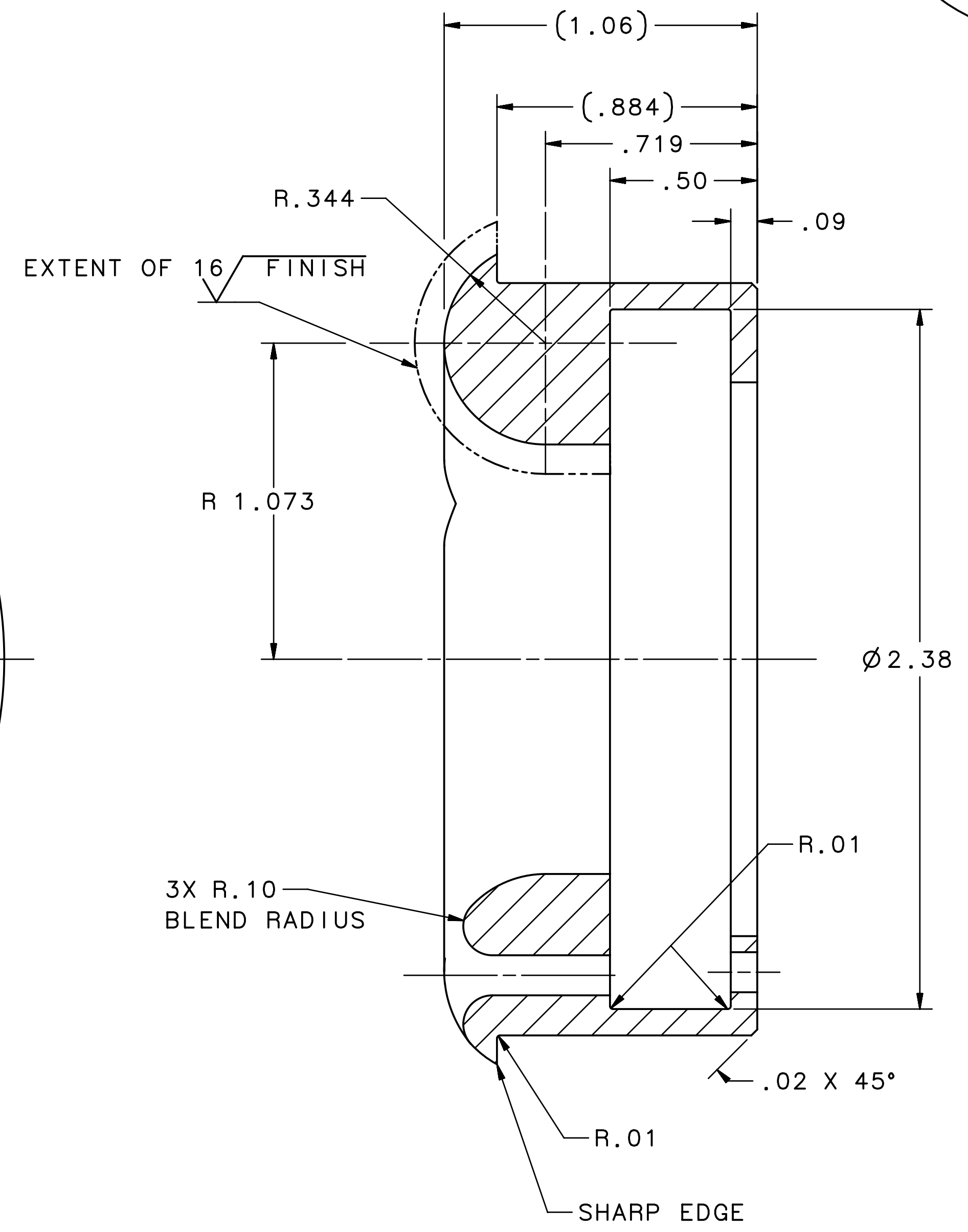
REVISION HISTORY			
ZONE	REV	DESCRIPTION	DATE/REVISER



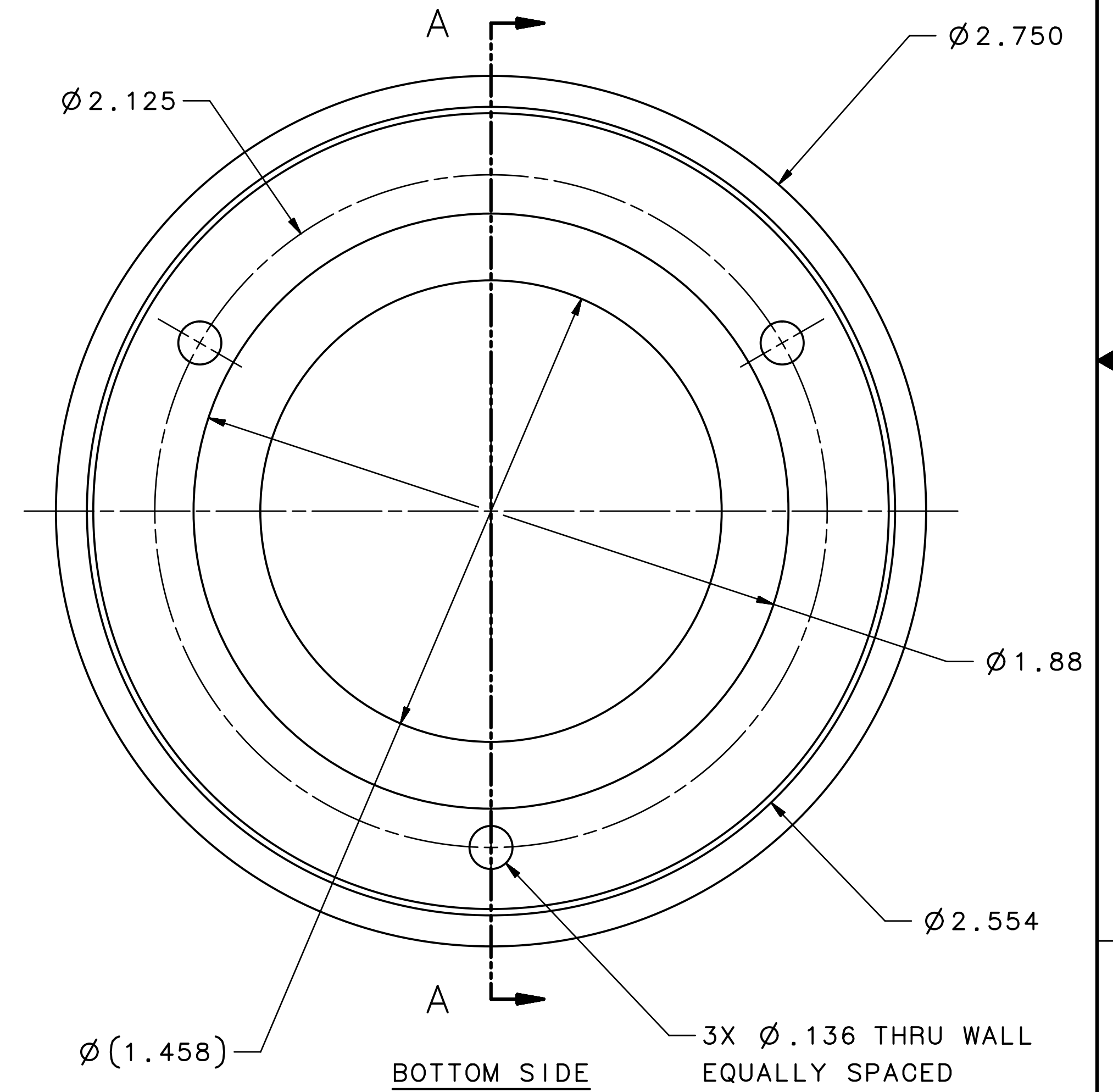
ISOMETRIC VIEW



TOP SIDE



SECTION A-A



BOTTOM SIDE

NOTES:

- USE THE FOLLOWING JLAB SPECIFICATIONS
 FABRICATION OF ULTRA HIGH VACUUM EQUIPMENT: #22631-S-001
 CLEANING AND HANDLING OF U.H.V. COMPONENTS: #22632-S-001

DIM & TOL PER ASME Y14.5 2009. UNLESS OTHERWISE SPECIFIED DIMENSIONS ARE IN INCHES. TOLERANCES ARE: FRACTIONS ± 1/8 DECIMAL .XX ± .01 .XXX ± .003 ANGLES ± .50°	MATERIAL STAINLESS STEEL TYPE 316L	United States Department of Energy Newport News Virginia
	FINISH MACHINE SURFACES DEBURR & BREAK ALL SHARP EDGES UNLESS OTHERWISE NOTED	ACC INJECTOR LOAD LOCK GUN ELECTRODE BACK END
THIRD ANGLE PROJECTION 	DO NOT SCALE DRAWING DRAWN F.W. SAPP DATE 10MAR2021	SIZE DWG. NO. D ACC2003000-0607 SCALE 3:1 USED ON ASSY NO. ACC-200-3000-0464 SHEET 1 OF 1