

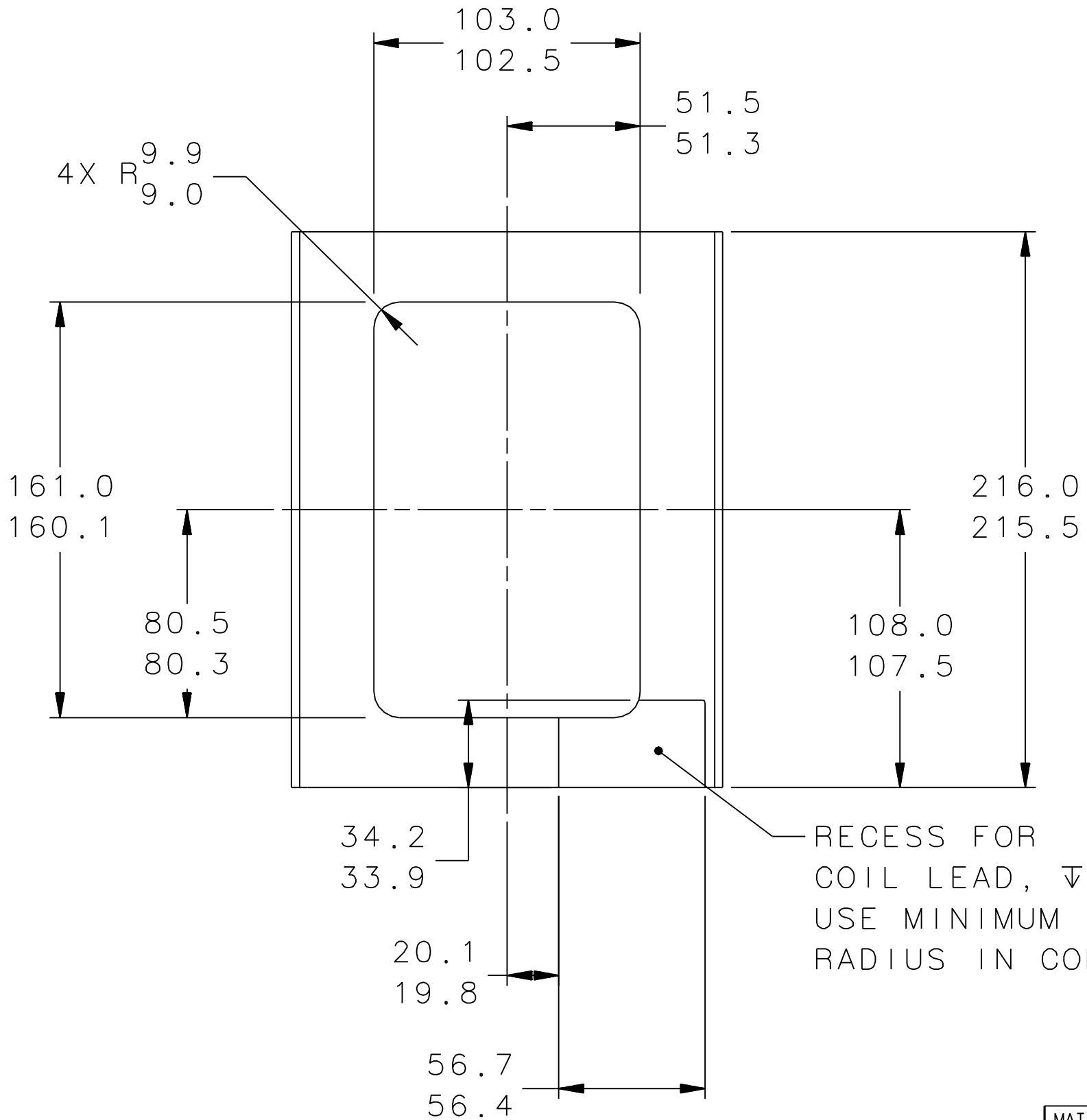
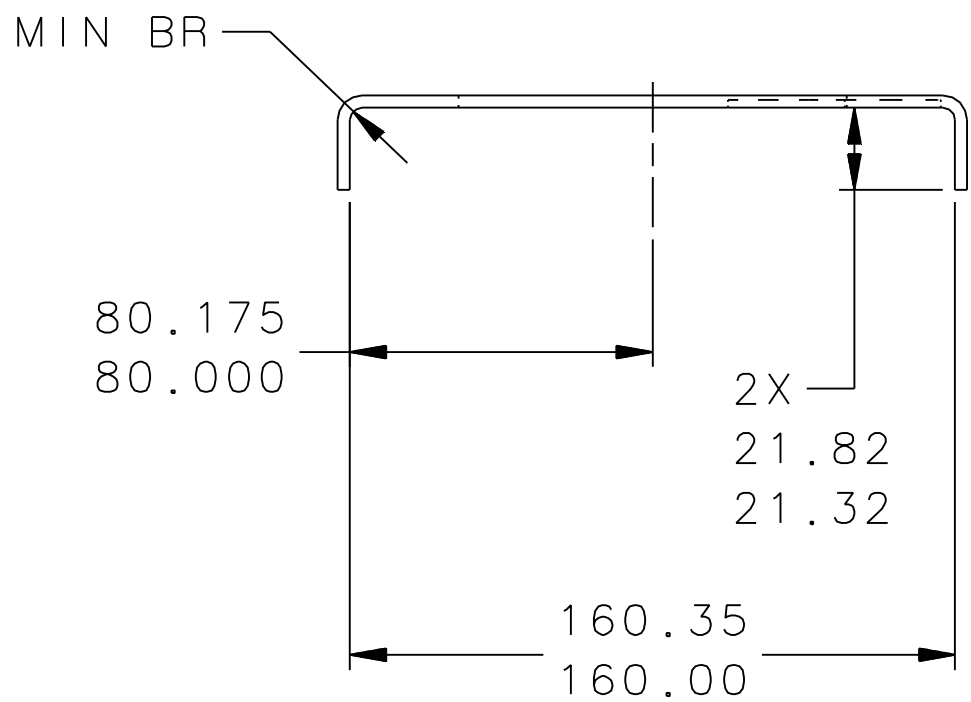
4

3

2

1

REVISION HISTORY				
ZONE	REV	DESCRIPTION	DATE	APPROVED



PRELIMINARY
03-26-14
REV 01

NOTES:

- ASME Y14.5-2009 IS USED FOR ALL DIMENSIONING AND TOLERANCING. ALL DIMENSIONS IN MILLIMETERS UNLESS OTHERWISE NOTED.

MATERIAL
0.125" COPPER SHEET
C11000 ASTM-B152

FINISH MACHINED SURFACES
DEBURR & BREAK ALL SHARP EDGES

UNLESS OTHERWISE NOTED

DO NOT SCALE DRAWING

DIM & TOL PER ASME Y14.5
UNLESS OTHERWISE SPECIFIED
DIMENSIONS ARE IN MILLIMETERS
TOLERANCES ARE:

FRACTIONS	DECIMAL	ANGLES
± N/A	.X ± .1 .XX ± .01 .XXX ± .005	± .50°

THIRD ANGLE PROJECTION

TRACKING NO. N/A	
APPROVALS	DATE
DRAWN S.A. GREGORY	03FEB14
CHECKED	
APPROVED	
APPROVED	

United States Department of Energy

Newport News Virginia

MAG CORRECTOR
DL
DL MAGNET COPPER PLATE

SIZE C	DWG. NO. JL0008882	REV. -
SCALE 1:2	USED ON ASSY NO. JL0008102	SHEET 1 OF 1