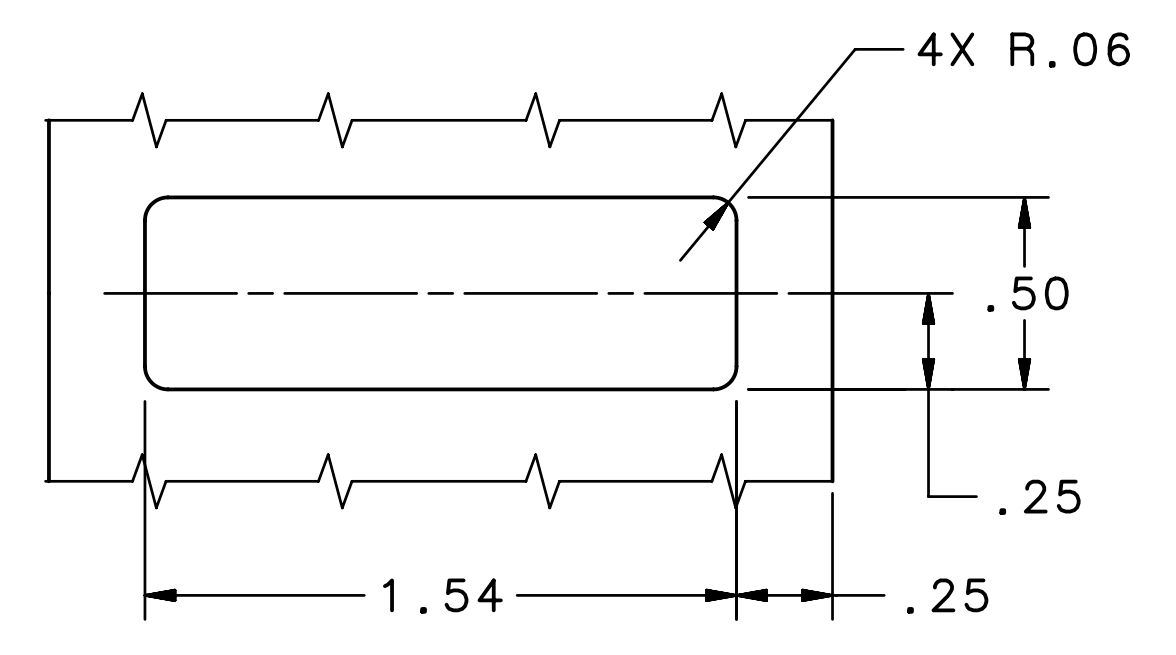
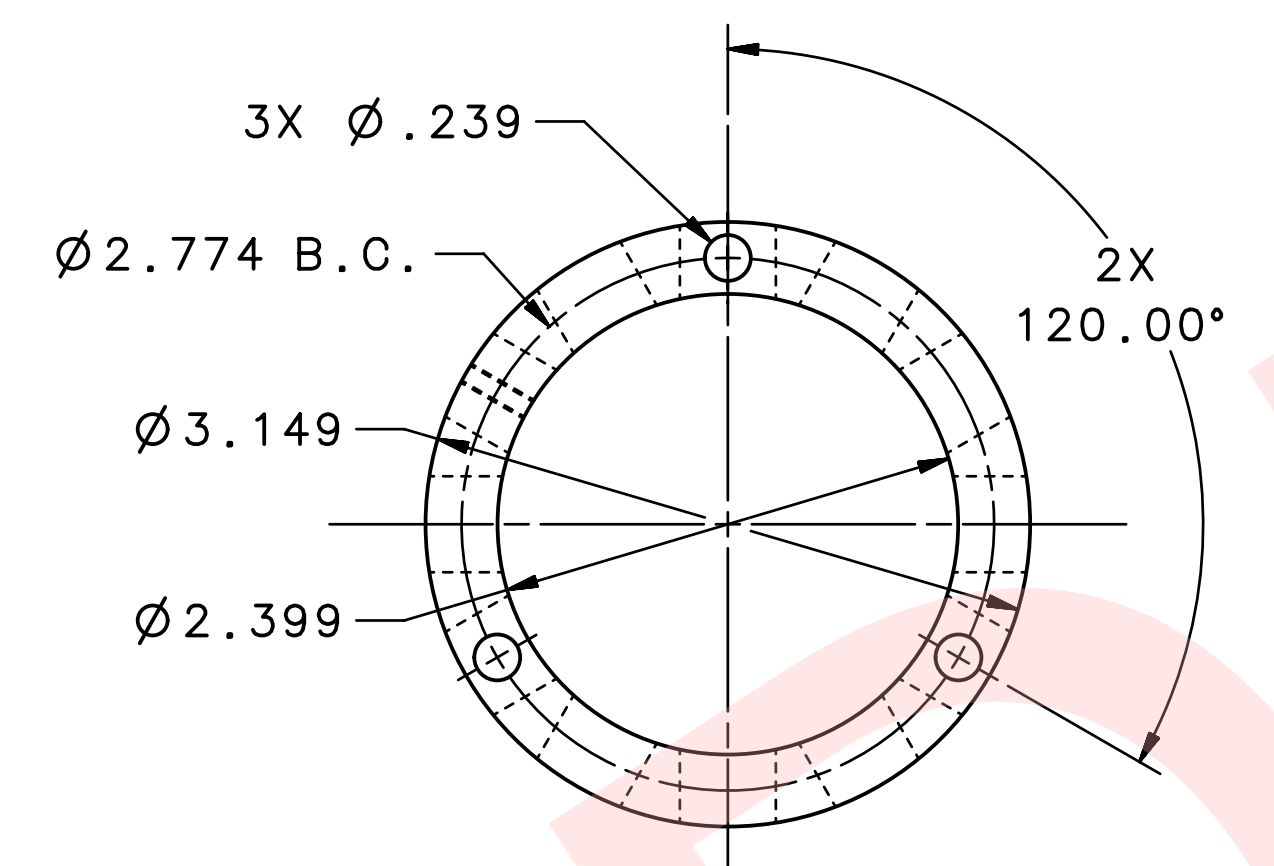
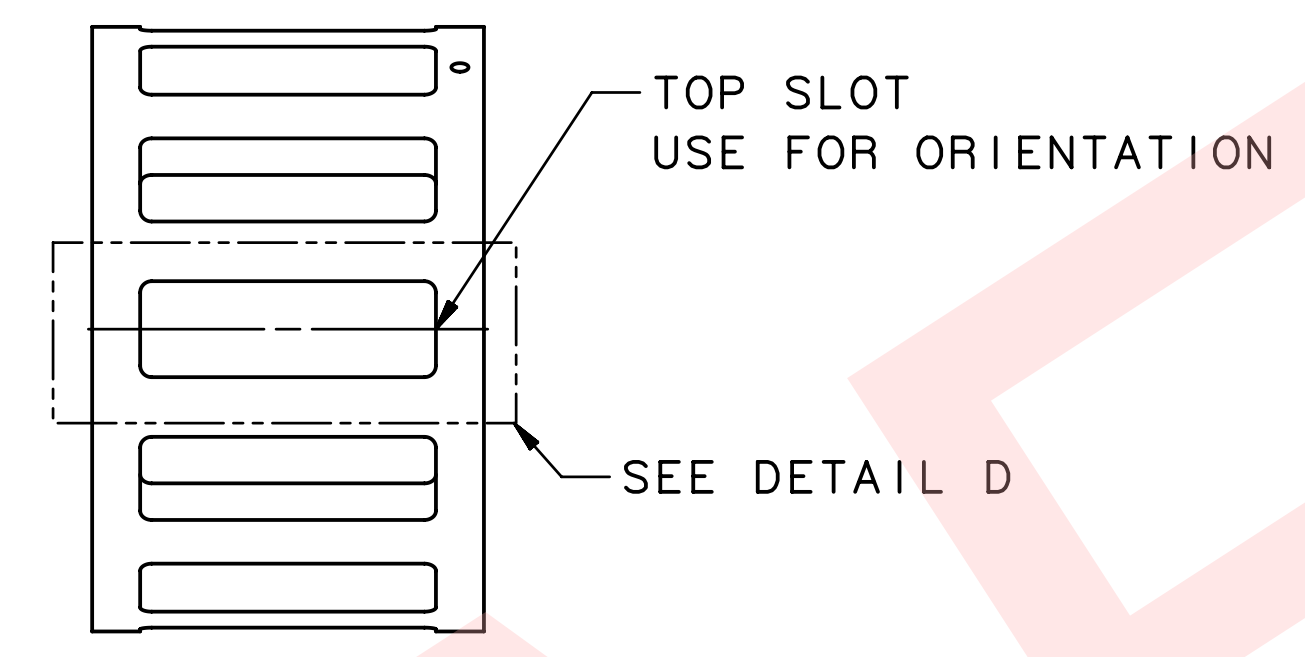


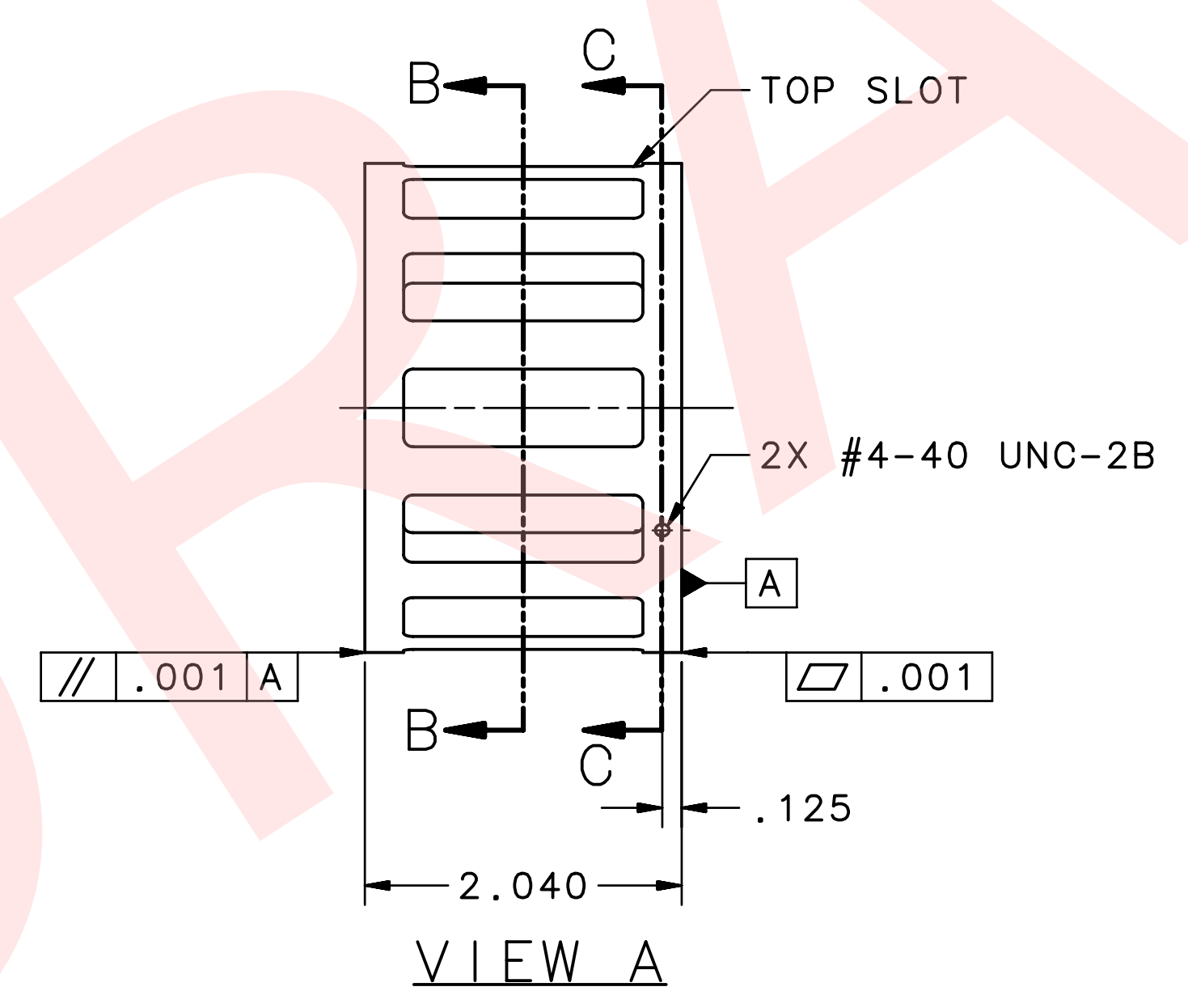
REVISION HISTORY			
ZONE	REV	DESCRIPTION	DATE/REVISER



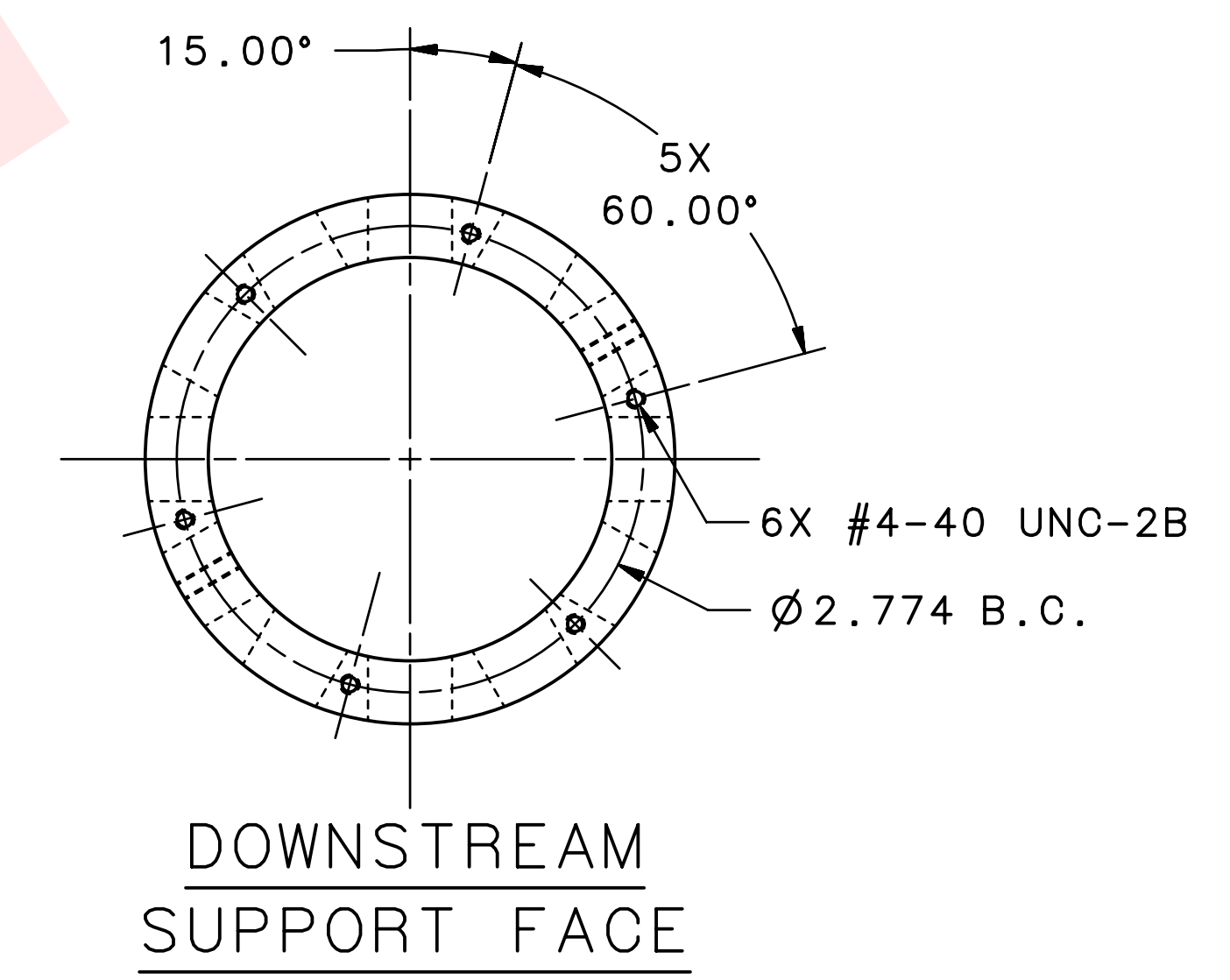
**DETAIL D**  
SLOT CUTOUT  
SCALE 2:1



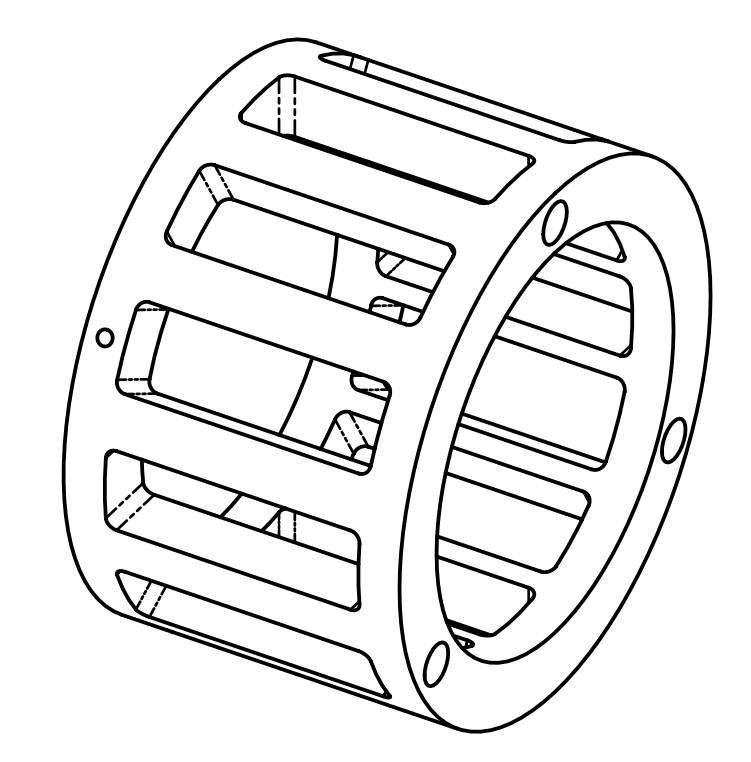
**UPSTREAM ANODE FACE**



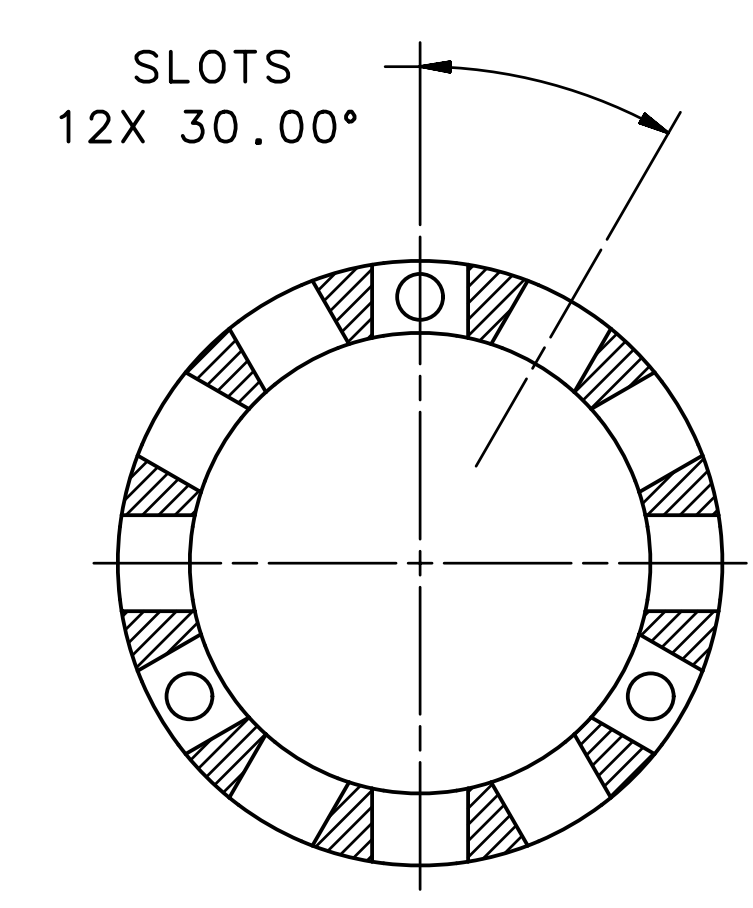
**VIEW A**



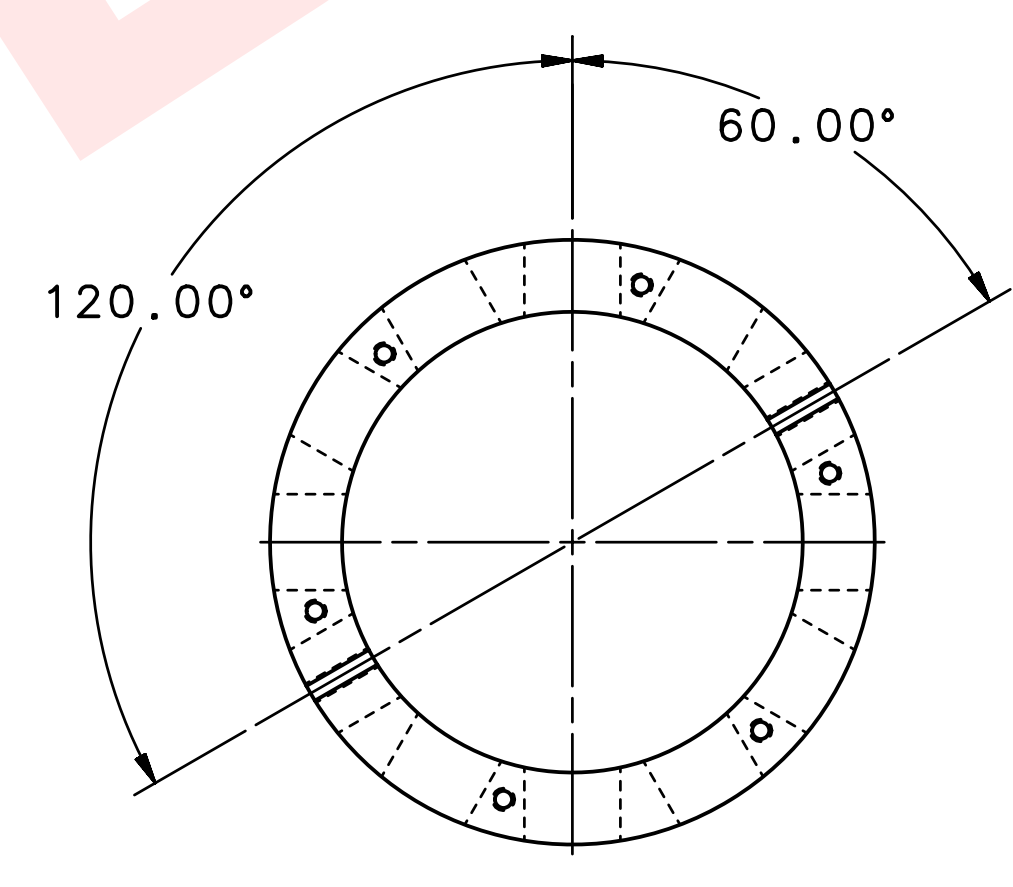
**DOWNSTREAM SUPPORT FACE**



**ISOMETRIC**



**SECTION B-B**



**SECTION C-C**  
SIDE TAPPED HOLES

**NOTES:**

- USE THE FOLLOWING JLAB SPECIFICATIONS:  
FABRICATION OF UHV EQUIPMENT: #22631-S-001  
CLEANING & HANDLING OF UHV COMPONENTS: #22632-S-001
- DEBURR AND BREAK ALL SHARP EDGES.

DIM & TOL PER ASME Y14.5 2009. UNLESS OTHERWISE SPECIFIED DIMENSIONS ARE IN INCHES. TOLERANCES ARE: FRACTIONS DECIMAL ANGLES ± 1/8 .X ±.1 ±.50 .XX ±.01 .XXX ±.005	MATERIAL	United States Department of Energy	Jefferson Lab Thomas Jefferson National Accelerator Facility	Newport News Virginia
	STAINLESS STEEL 316L	ACC INJECTOR LOAD LOCK GUN 12-SLOT ANODE STANDOFF		
THIRD ANGLE PROJECTION	FINISH 36 UNLESS OTHERWISE NOTED MACHINE SURFACES DEBURR & BREAK ALL SHARP EDGES	DO NOT SCALE DRAWING	SIZE DWG. NO. JL0119495-0035	REV. -
DRAWN S.A. GREGORY	DATE 22MAR22	SCALE 1:1	USED ON ASSY NO. JL0119495-0030	SHEET 1 OF 1