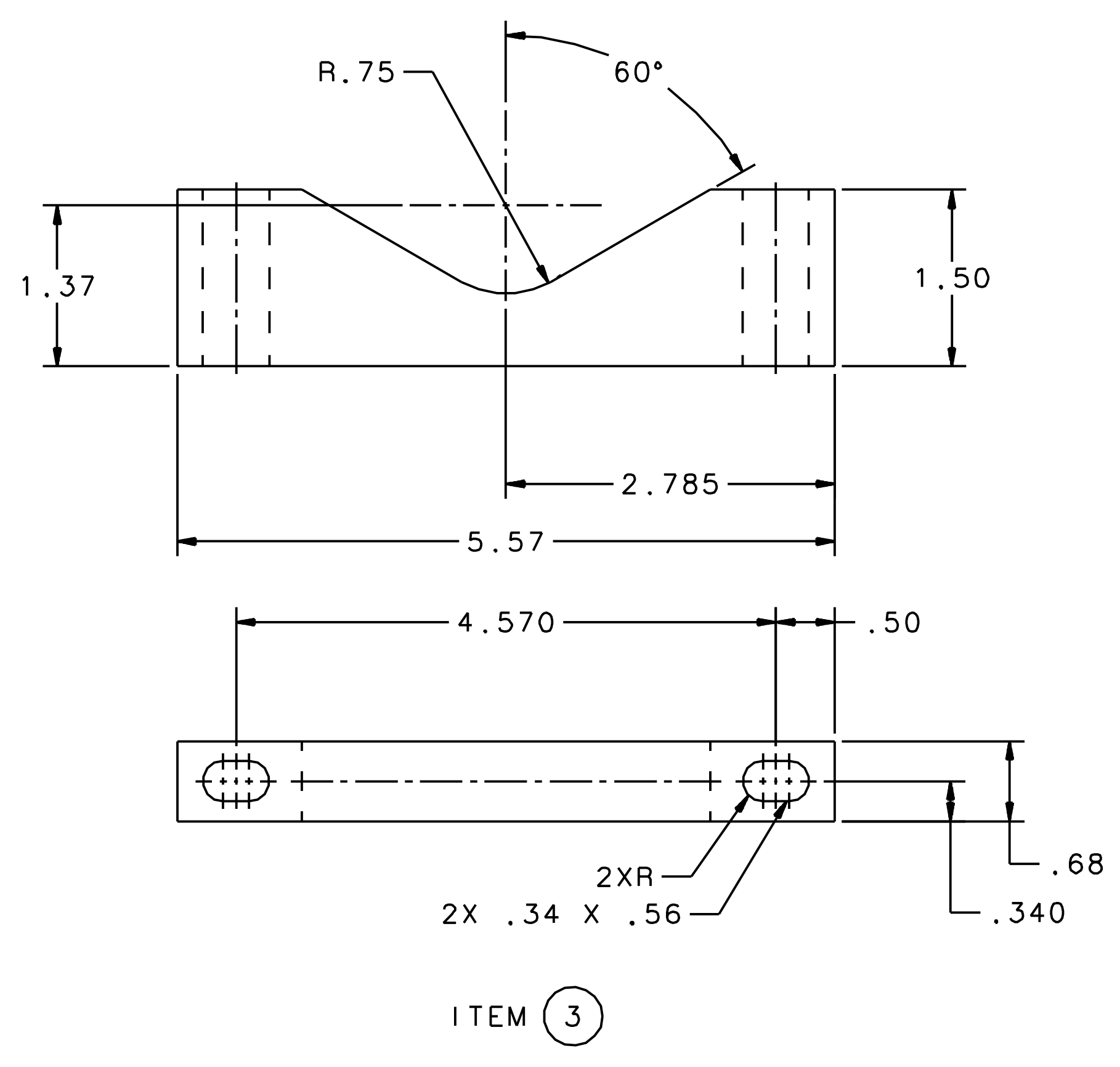


- NOTES:**
- ASME Y14.5-2009 IS USED FOR ALL DIMENSIONING AND TOLERANCING.
 - STAMP DRAWING NUMBER JL0015095 IN .38 MIN HIGH CHARACTERS IN AREA SHOWN.
 - SET SPRING PIN ITEM 17 .06 BELOW SURFACE.

QTY	ITEM NO	PART OR IDENTIFYING NO	NON-FINISH OR DESCRIPTION	MATERIAL	NOTES
2	18	-	HEX SOCKET HEAD CAP SCREW 1/4-20 UNC X 1.25 LG	ALUMINUM	-
1	17	MCMASTER-CARR P/N 92383A250	SPRING PIN 1/8 DIA X 3/8 LG	STAINLESS STEEL TYPE 18-8	-
12	16	-	FLAT WASHER 1/4 NOM DIA	ALUMINUM	-
6	16	-	FLAT WASHER 1/4 NOM DIA	STAINLESS STEEL TYPE 18-8	-
2	15	-	HEX JAM NUT, 1/4-20 UNC	SILICON BRONZE	-
12	14	-	HEX NUT, 1/4-20 UNC	ALUMINUM	-
4	13	-	HEX NUT, 1/4-20 UNC	SILICON BRONZE	-
3	12	MCMASTER-CARR PN 97381A303	SHOULDER SCREW 1/4 DIA X 1/2 LG, #10-24	ALUMINUM	-
4	11	-	HEX SOCKET HEAD CAP SCREW 1/4-20 UNC X 1.25 LG	STAINLESS STEEL TYPE 18-8	-
2	10	-	HEX SOCKET HEAD CAP SCREW 1/4-20 UNC X 5/8 LG	ALUMINUM	-
1	9	-	HEX SOCKET HEAD CAP SCREW 1/4-20 UNC X 2.50 LG	STAINLESS STEEL TYPE 18-8	-
4	8	-	THREADED ROD 1/4-20 UNC X 12.0 LG	ALUMINUM TYPE 6061	-
8	7	-	THREADED INSERT INTERNAL 1/4-20 UNC X 3/8 LG	NITRONIC 60	-
3	6	-	THREADED INSERT INTERNAL #10-24 UNC X 3/8 LG	NITRONIC 60	-
1	5	-	END BLOCK	ALUMINUM TYPE 6061	-
1	4	-	SCREW BLOCK	ALUMINUM TYPE 6061	-
4	3	-	4 OD CU COLLIMATOR SUPPORT BRACKET	ALUMINUM TYPE 6061	-
1	2	-	CU COLLIMATOR YAW PLATE	ALUMINUM TYPE 6061	-
1	1	-	CU COLLIMATOR MOUNT PLATE	ALUMINUM TYPE 6061	-



UNITED STATES DEPARTMENT OF ENERGY
Jefferson Lab
 Jefferson National Accelerator Facility
 Newport News, Virginia

ACC INJECTOR (DETAILS & ASSEMBLIES)
 BUBBLE CHAMBER
 CU COLLIMATOR MOUNTING ASSEMBLY

SIZE DWG NO JL0015095
 REV B

THIRD ANGLE PROJECTION
 FINISH UNLESS OTHERWISE SPECIFIED
 MACHINED SURFACES DEBURR & BREAK ALL SHARP EDGES
 DO NOT SCALE DRAWING
 DRAWN S.A. GREGORY DATE 09JUN14 SCALE 1:2
 SHEET 1 OF 1