



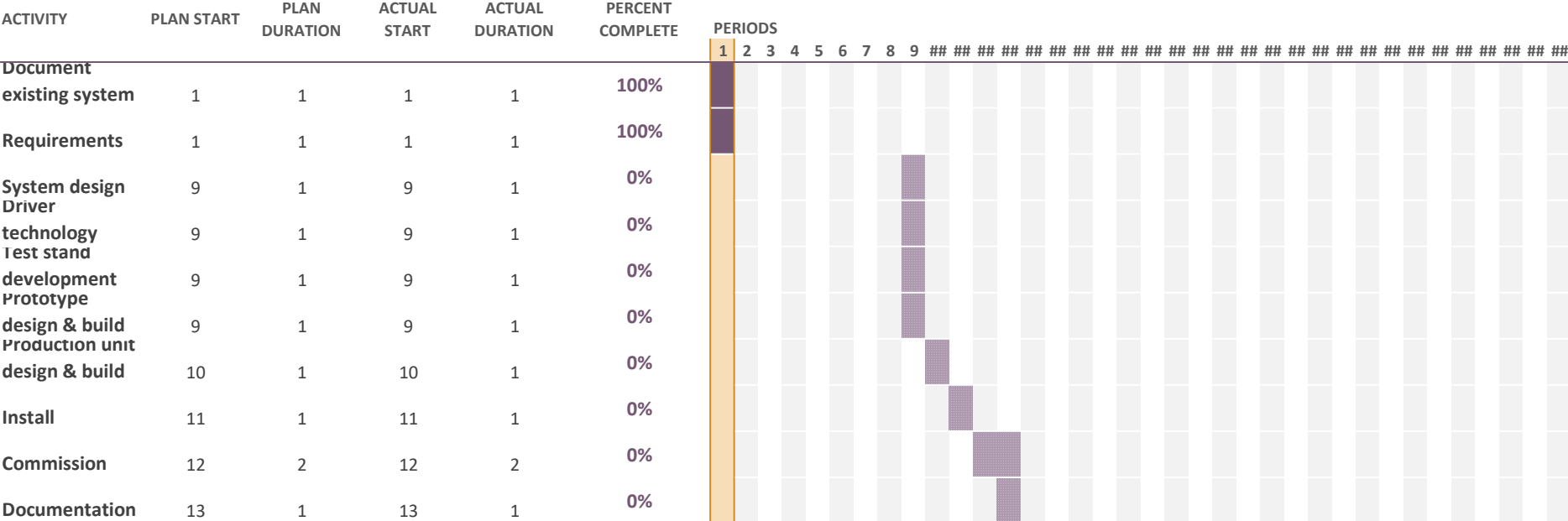


# RTP HV Driver

Select a period to highlight at right. A legend describing the charting follows.

Period Highlight: 1

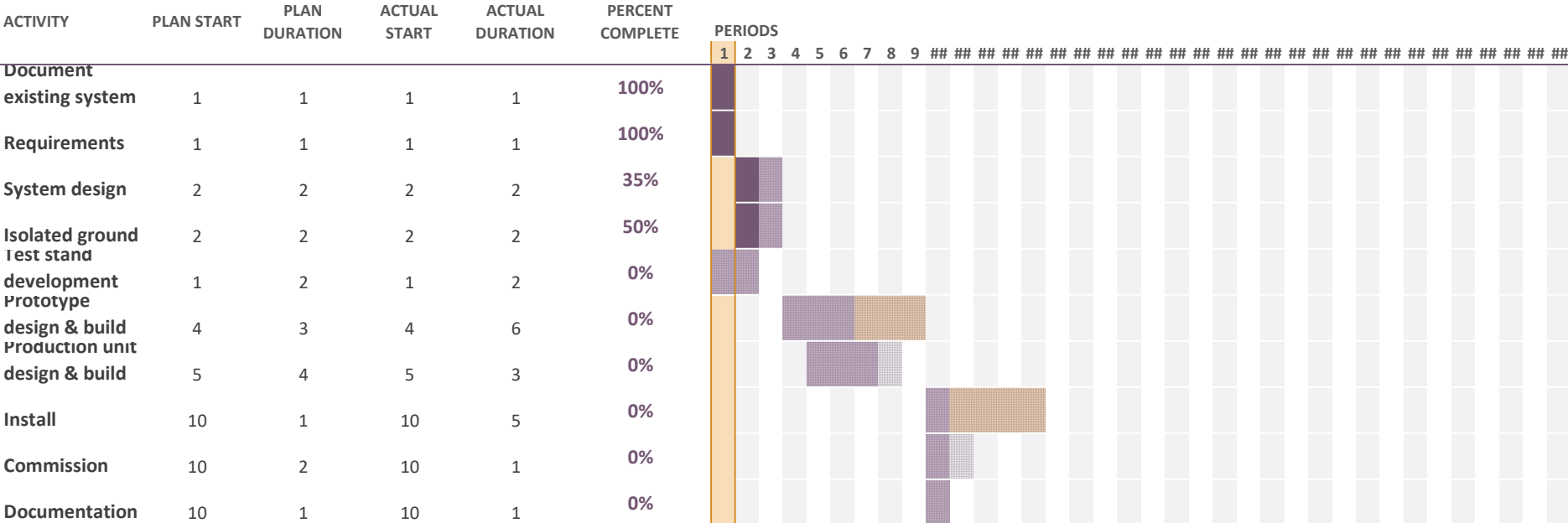
Plan Duration Actual Start % Complete Actual (beyond plan) % Complete (beyond pla



# IA HV Driver

Select a period to highlight at right. A legend describing the charting follows.

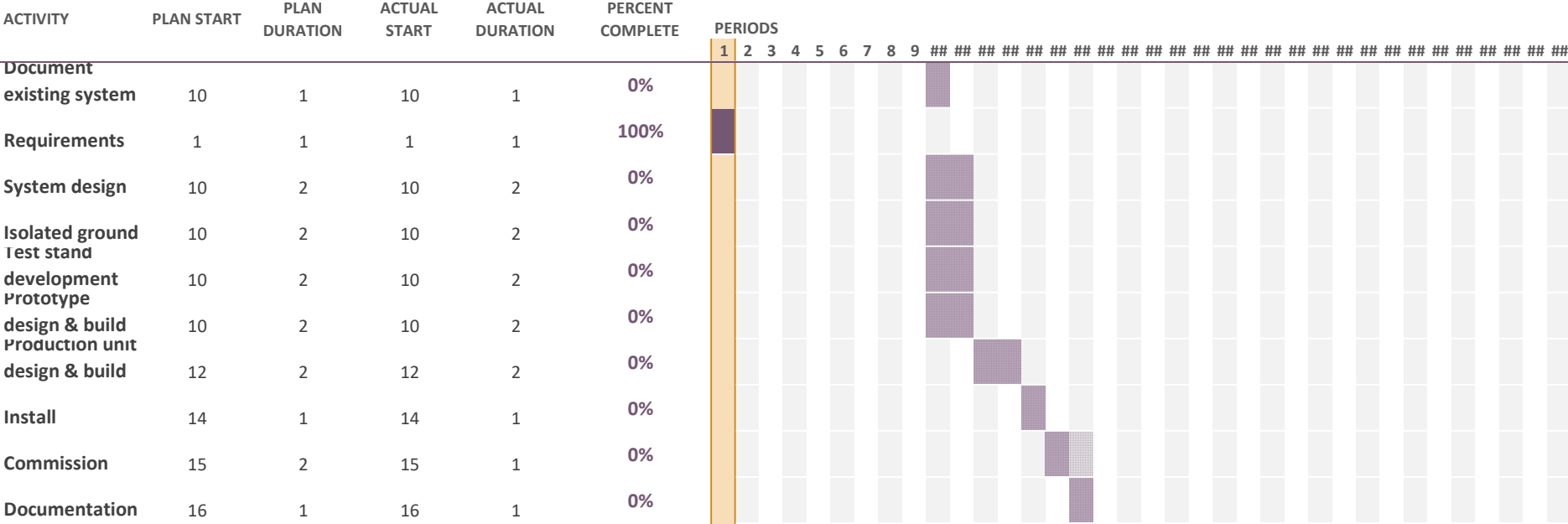
Period Highlight: 1 Plan Duration Actual Start % Complete Actual (beyond plan) % Complete (beyond pla



# Upgrade Helicity Magnets Control

Select a period to highlight at right. A legend describing the charting follows.

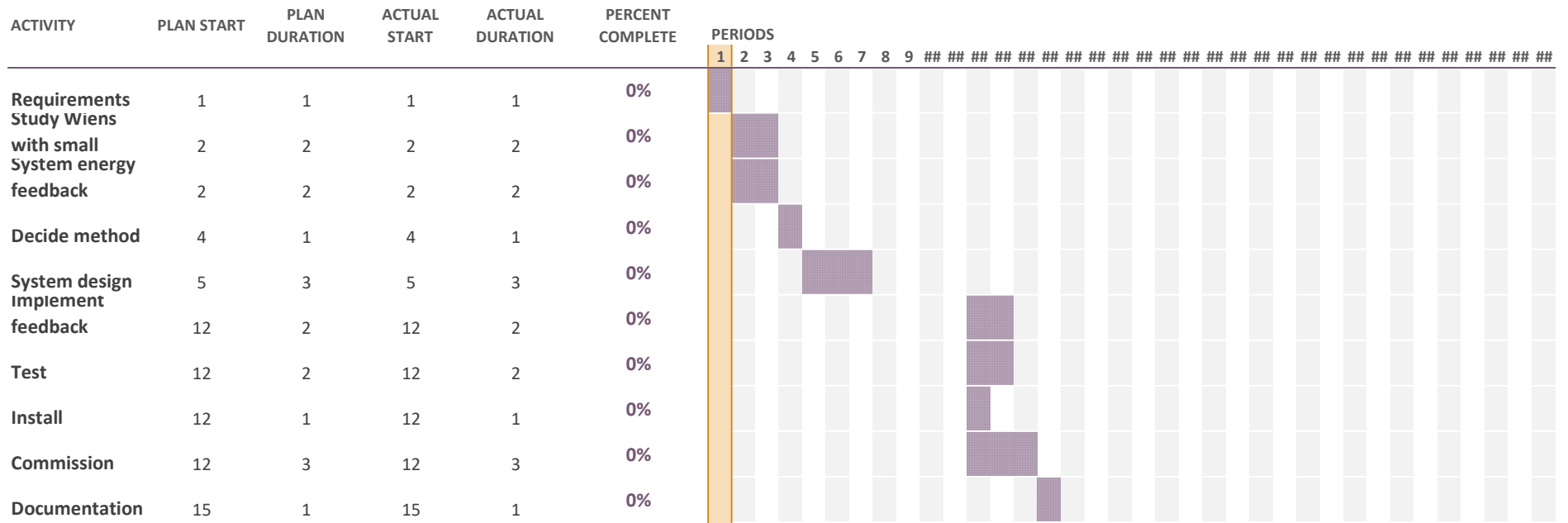
Period Highlight: 1
 Plan Duration 
  Actual Start 
  % Complete 
  Actual (beyond plan) 
  % Complete (beyond pla



# Feedback on Polarization Orientation

Select a period to highlight at right. A legend describing the charting follows.

Period Highlight: 1 Plan Duration Actual Start % Complete Actual (beyond plan) % Complete (beyond pla







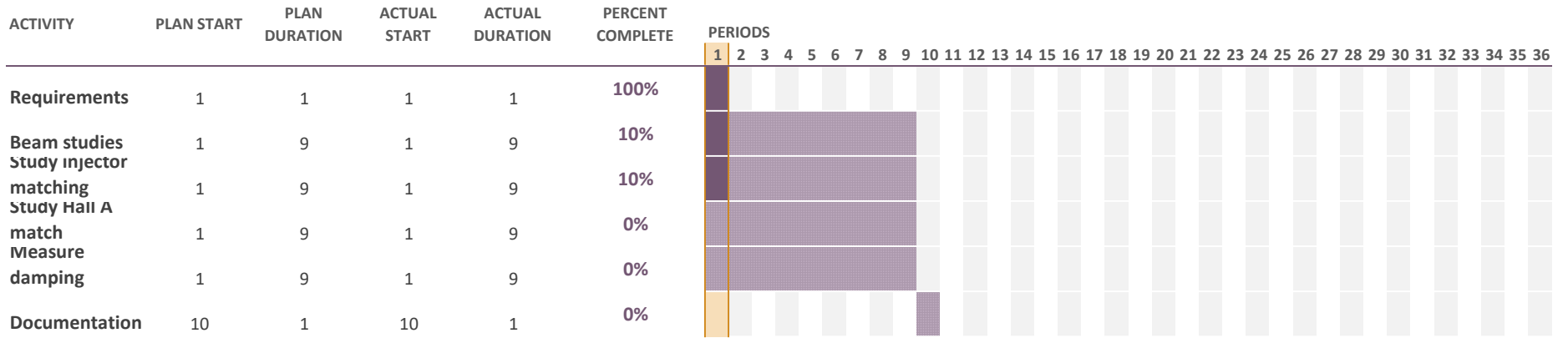


# Matching and Adiabatic Damping from 200 keV to Hall A

Select a period to highlight at right. A legend describing the charting follows.

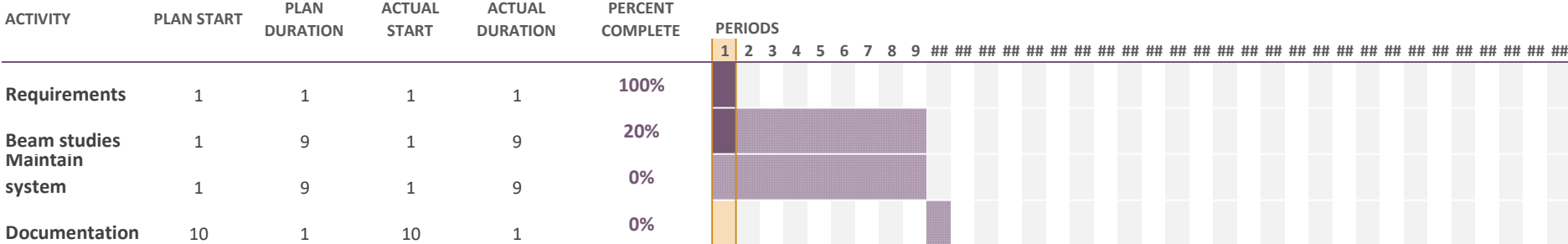
Period Highlight: 1

Plan Duration Actual Start % Complete Actual (beyond plan) % Complete (beyond pla



# Fast Feedback (FFB) System Resurrection

Select a period to highlight at right. A legend describing the charting follows. **Period Highlight:** 1  Plan Duration  Actual Start  % Complete  Actual (beyond plan)  % Complete (beyond pla



# Compton Polarimeter Setup

Select a period to highlight at right. A legend describing the charting follows.

Period Highlight: 1

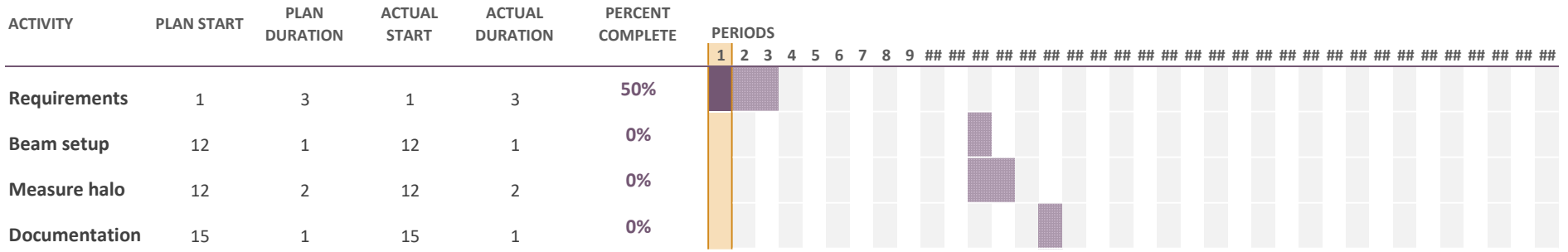
Plan Duration

Actual Start

% Complete

Actual (beyond plan)

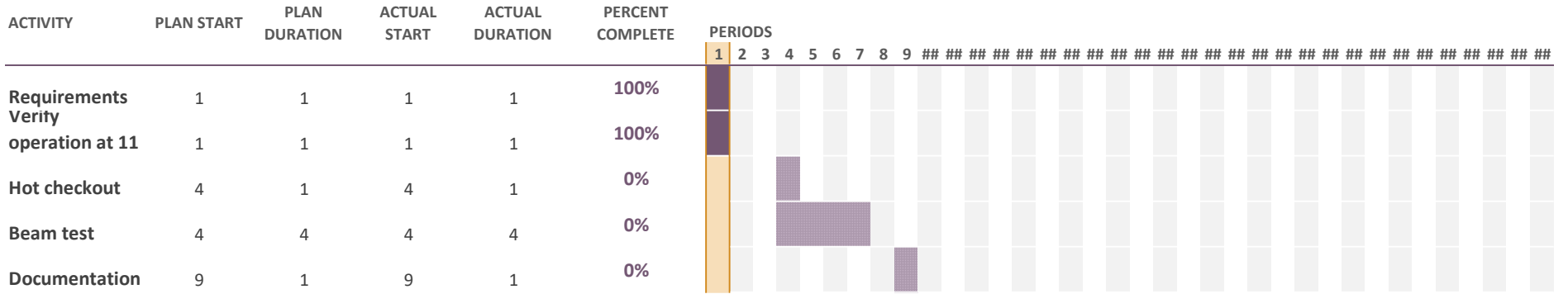
% Complete (beyond pla



# Beam Modulation

Select a period to highlight at right. A legend describing the charting follows.

Period Highlight: 1 Plan Duration Actual Start % Complete Actual (beyond plan) % Complete (beyond plan)

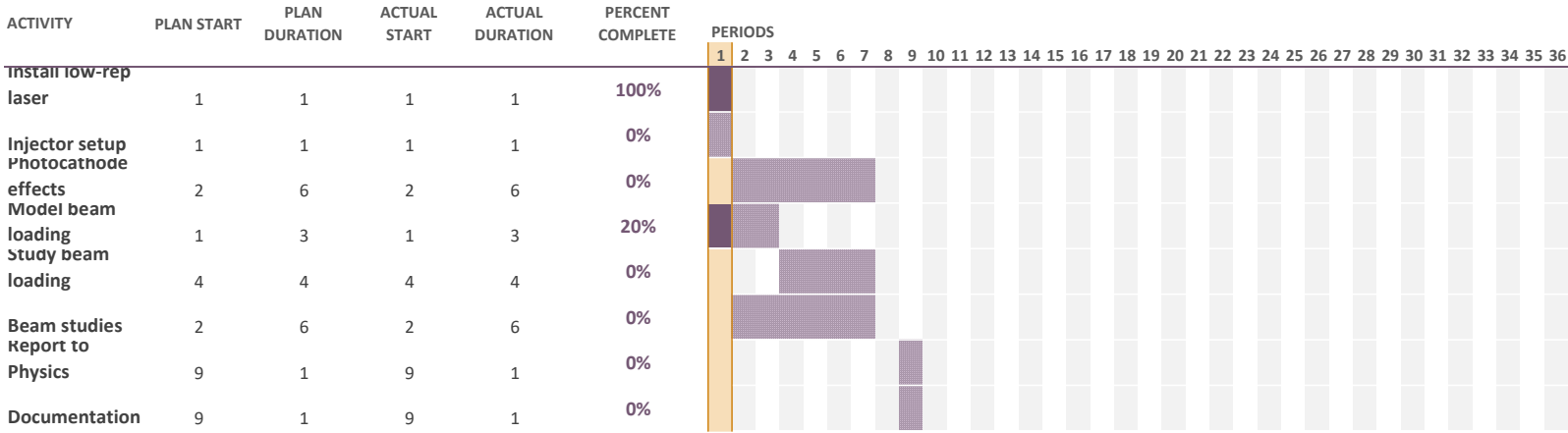




# Study Co-operation of MOLLER with K-long Experiment in Hall D

Select a period to highlight at right. A legend describing the charting follows. **Period Highlight:** 1

Plan Duration Actual Start % Complete Actual (beyond plan) % Complete (beyond pla

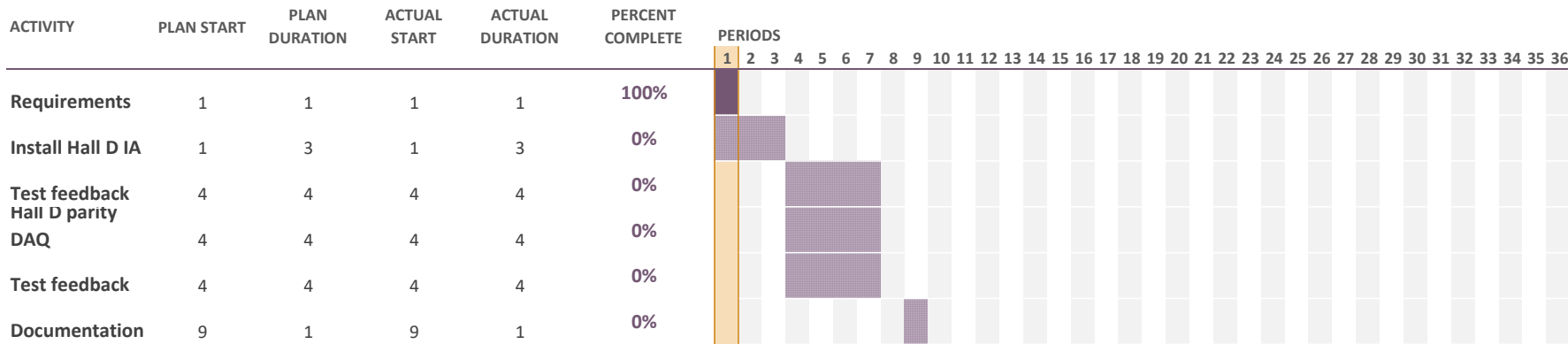


# Control of Charge Asymmetry on Halls B, C, and D Beams

Select a period to highlight at right. A legend describing the charting follows.

Period Highlight: 1

Plan Duration Actual Start % Complete Actual (beyond plan) % Complete (beyond pla

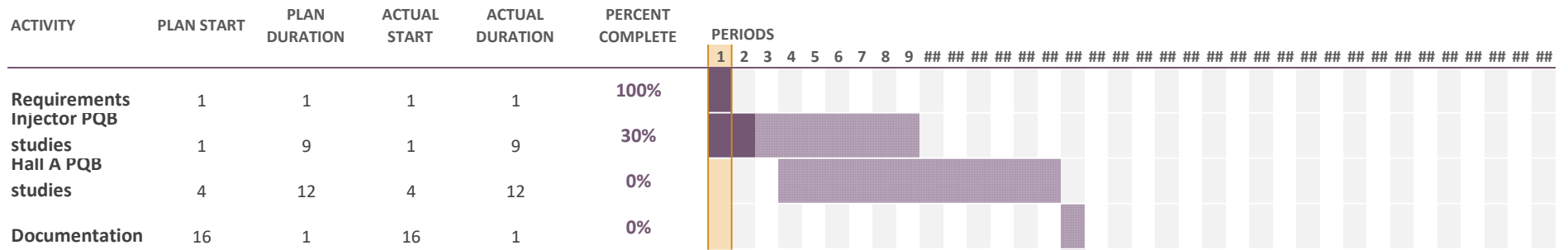


# Parity-Quality Beam (PQB) Studies in Injector and Hall

Select a period to highlight at right. A legend describing the charting follows.

Period Highlight: 1






Plan Duration Actual Start % Complete Actual (beyond plan) % Complete (beyond pla

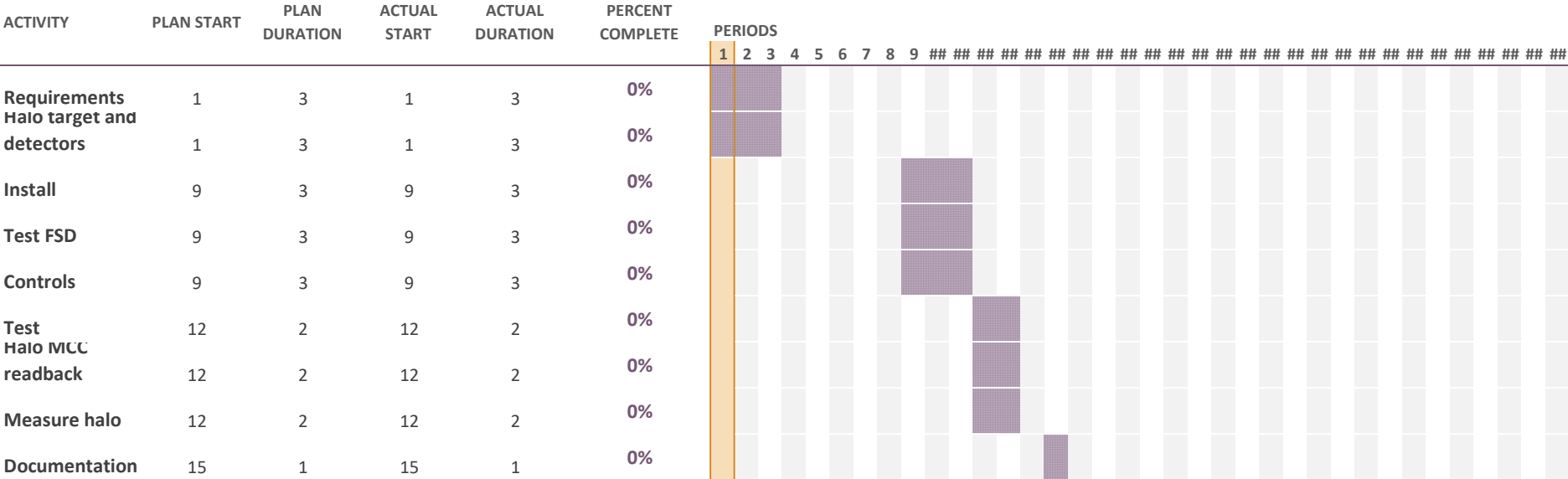




# Halo Monitors in Hall A

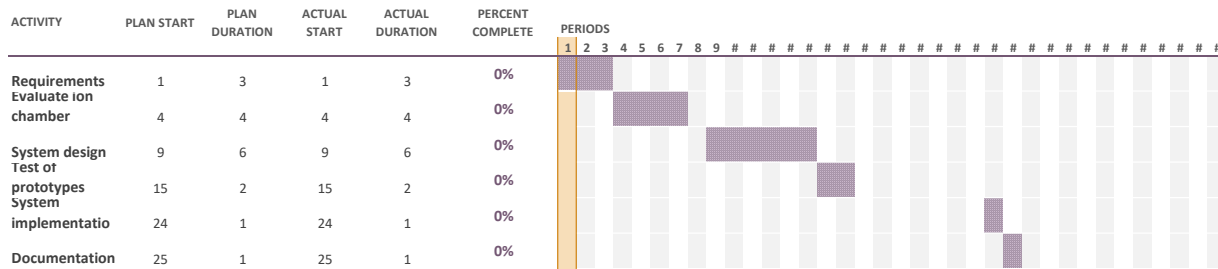
Select a period to highlight at right. A legend describing the charting follows.

Period Highlight: **1**  Plan Duration  Actual Start  % Complete  Actual (beyond plan)  % Complete (beyond pla



# Robust Beam Mis-steer Protection / Fast Shutdown Detectors in MOLLER Apparatus

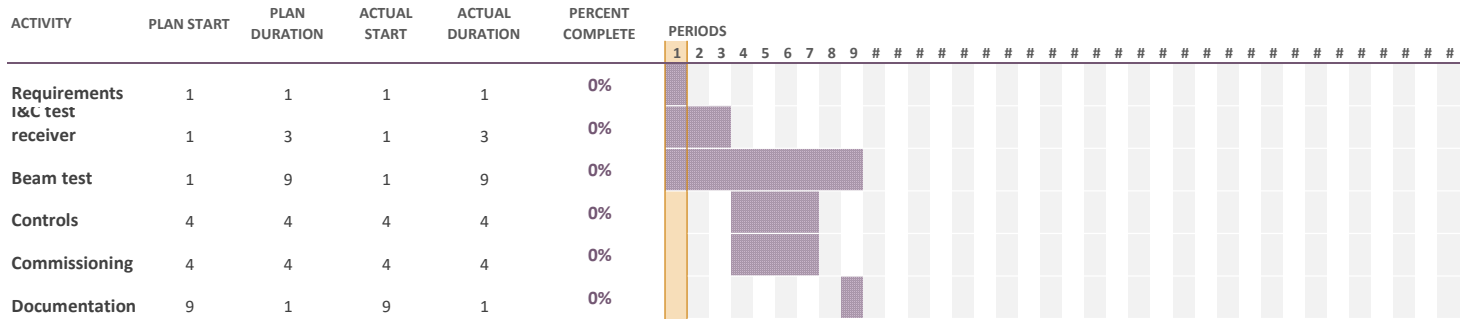
Select a period to highlight at right. A legend describing the charting follows. **Period Highlight:** 1



# New BPM Digital Receivers in Hall A line – instead of Sample/Hold cards

Select a period to highlight at right. A legend describing the charting follows.

Period Highlight: **1** | Plan Duration | Actual Start | % Complete | Actual (beyond plan) | % Complete (beyond pla



# New BCMs electronics in Hall A line

Select a period to highlight at right. A legend describing the charting follows.

Period Highlight: 1 Plan Duration Actual Start % Complete Actual (beyond plan) % Complete (beyond pla

