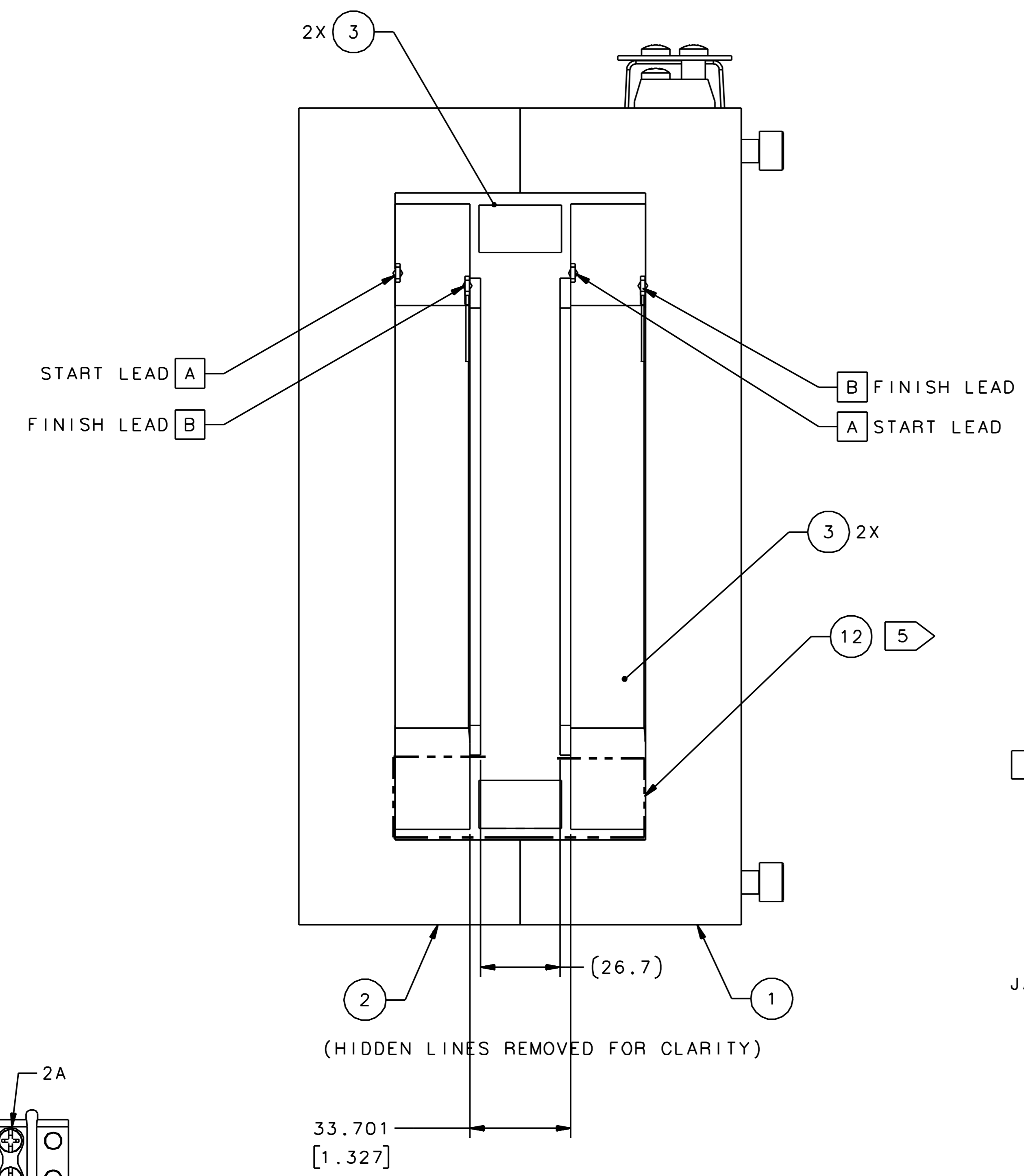
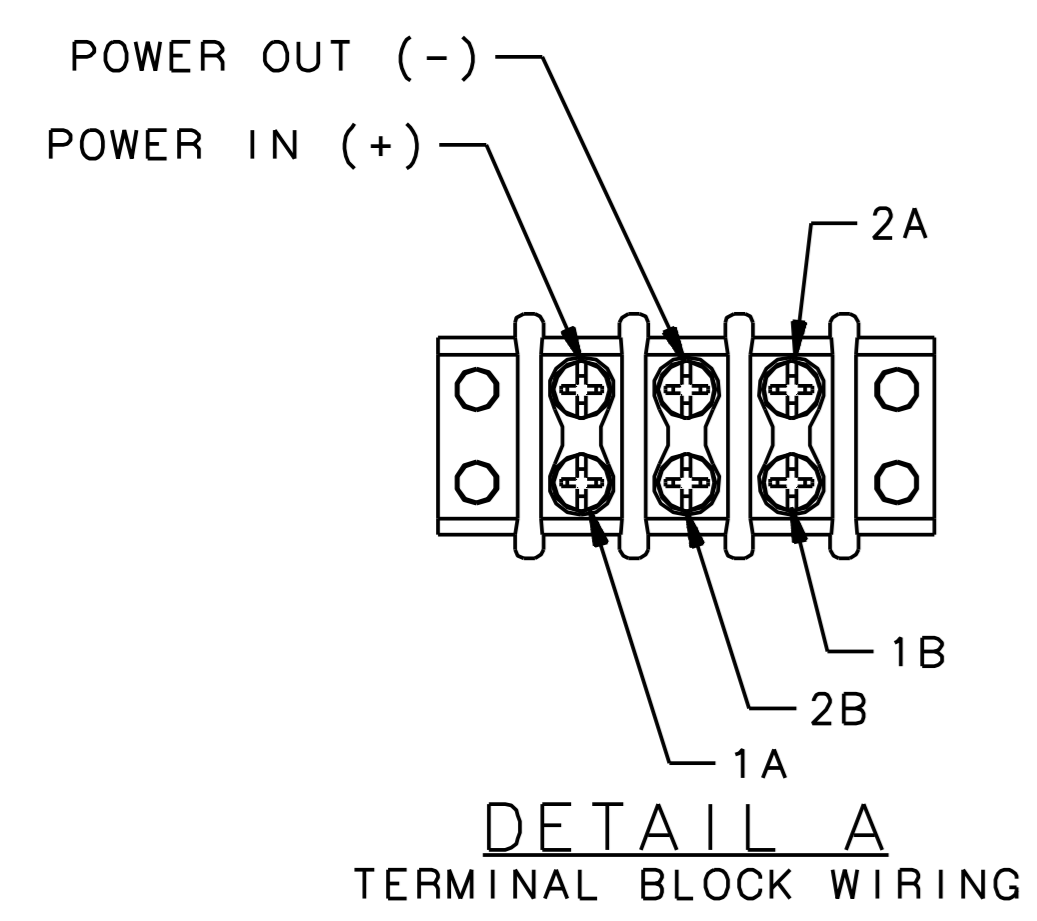


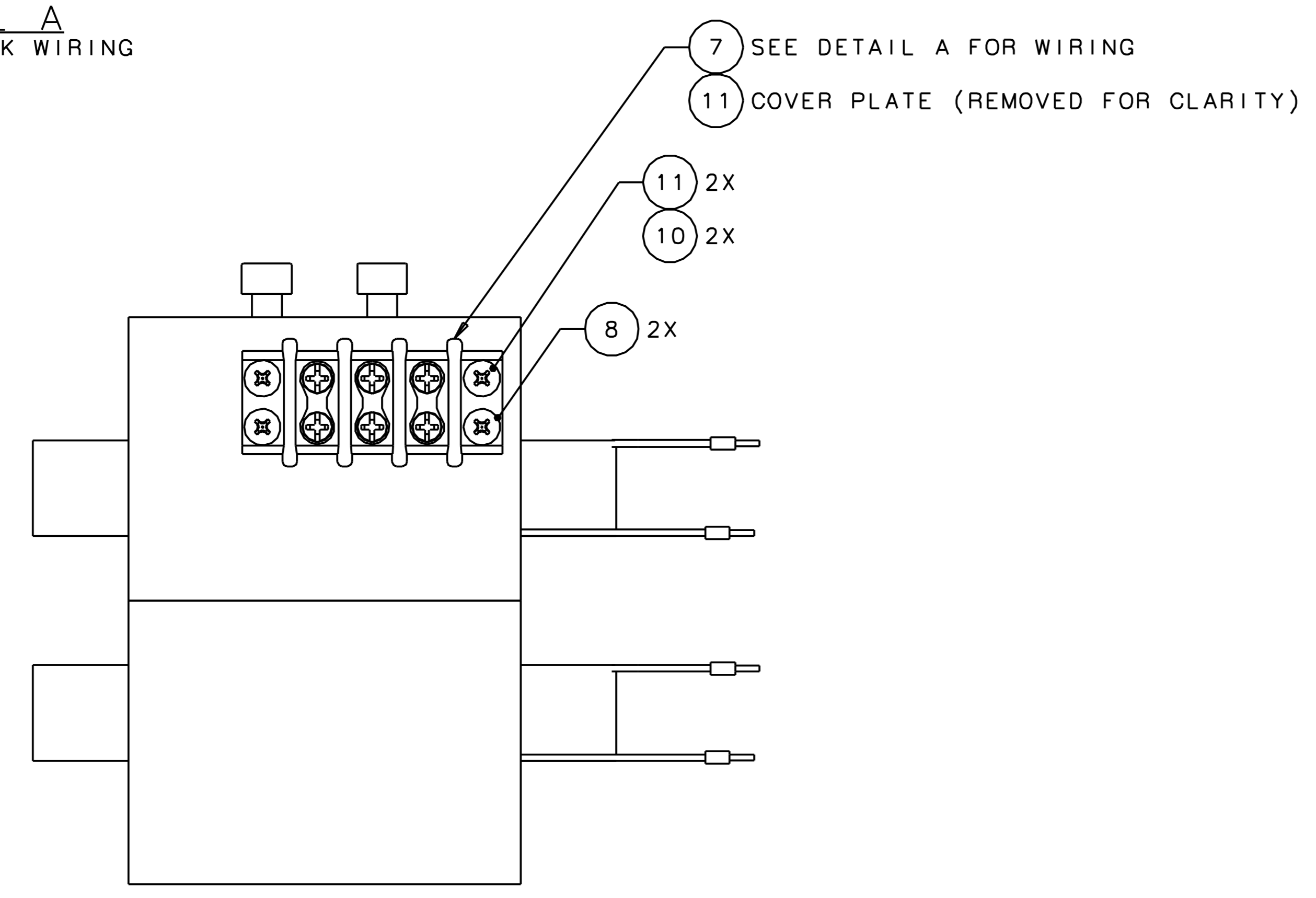
VIEW A



VIEW B



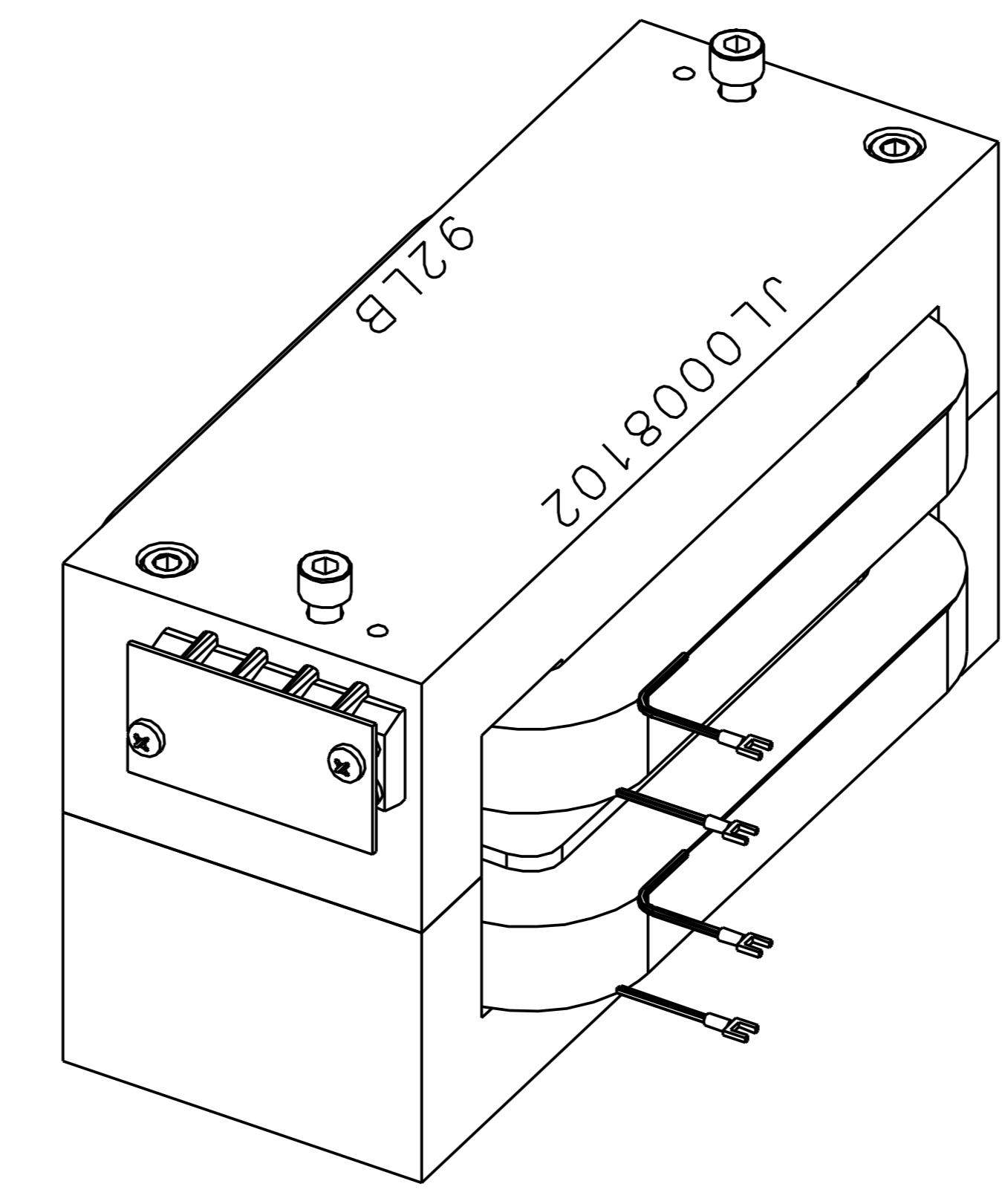
DETAIL A
TERMINAL BLOCK WIRING



PRELIMINARY
02-26-14
REV 03

NOTES:

- ASME Y14.5-2009 IS USED FOR ALL DIMENSIONING AND TOLERANCING.
- PRESS DOWEL PIN ITEM 4 INTO BOTTOM CORE ITEM 2, 10MM DEEP.
- LOCATE COIL SPACER BETWEEN COILS AT THE POSITION INDICATED ON THIS DRAWING. INSERT SPACERS & SHIMS ITEM 4 AS NEEDED.
- STENCIL MAGNET WEIGHT (92LB) AND PART NUMBER IN .50" HIGH CHARACTERS IN WHITE ENAMEL AS INDICATED.
- LINE CORE POCKETS WITH ONE LAYER ITEM 12.
- TORQUE TO 10 FT-LB.



ISOMETRIC
(NOT TO SCALE)

AR	ITEM NO	PART OR IDENTIFYING NO	QUANTITY	DESCRIPTION	MATERIAL SPECIFICATION	NOTES
	12	-	-	0.005" KAPTON TAPE	-	5
	2	11	-	PAN HEAD SCREW M5 X 0.8 X 25MM LG	DULL NICKEL PLATED STEEL	-
	1	10	JL0011326	DL TERMINAL COVER	-	-
	2	9	MCMASTER-CARR PN 92273A065	G10 SPACER 0.25 OD	G10	-
	2	8	-	PAN HEAD SCREW M5 X 0.8 X 16MM LG	DULL NICKEL PLATED STEEL	-
	1	7	MCMASTER-CARR PN 7527K83	3 CIRCUIT TERMINAL BLOCK	-	-
	2	6	-	HEX SOCKET HEAD CAP SCREW M8 X 1.25 X 80MM LG	DULL NICKEL PLATED STEEL	-
	2	5	-	HEX SOCKET HEAD CAP SCREW M8 X 1.25 X 75MM LG	DULL NICKEL PLATED STEEL	6
	2	4	MCMASTER-CARR PN 91595A356	DOWEL PIN 5MM DIA X 20MM LG	ALLOY STEEL	2
	2	3	JL0008751	DL COIL SPACER	-	-
	1	2	JL0008736	DL MAGNET CORE - BOTTOM	-	-
	1	1	JL0008098	DL MAGNET CORE - TOP	-	-

MATERIAL
SEE PARTS LIST

EACH SHEET OF MULTI-SHEET DRAWINGS SHALL ALWAYS HAVE THE SAME REVISION LEVEL.
UNLESS OTHERWISE SPECIFIED, DIMENSIONS ARE IN MILLIMETERS. DIMENSIONS ARE IN INCHES. FRACTIONS ARE 1/16, 1/8, 1/4, 3/8, 1/2, 5/8, 3/4, 7/8, 1, 1 1/8, 1 1/4, 1 1/2, 1 3/4, 2, 2 1/4, 2 1/2, 2 3/4, 3, 3 1/4, 3 1/2, 3 3/4, 4, 4 1/4, 4 1/2, 4 3/4, 5, 5 1/4, 5 1/2, 5 3/4, 6, 6 1/4, 6 1/2, 6 3/4, 7, 7 1/4, 7 1/2, 7 3/4, 8, 8 1/4, 8 1/2, 8 3/4, 9, 9 1/4, 9 1/2, 9 3/4, 10.

TRACKING NO	N/A	United States Department of Energy	Jefferson Lab Thomas Jefferson National Accelerator Facility	Norfolk Virginia
APPROVALS	DATE	MAG CORRECTOR DL DL MAGNET ASSEMBLY		
CHECKED	S.A. GREGORY	12/01/13	DRAWN	
APPROVED			SIZE (DWG NO)	REV
APPROVED			E	JL0008102
			SCALE	1:1
			ISO 64610	N/A
				SHEET 1 OF 1