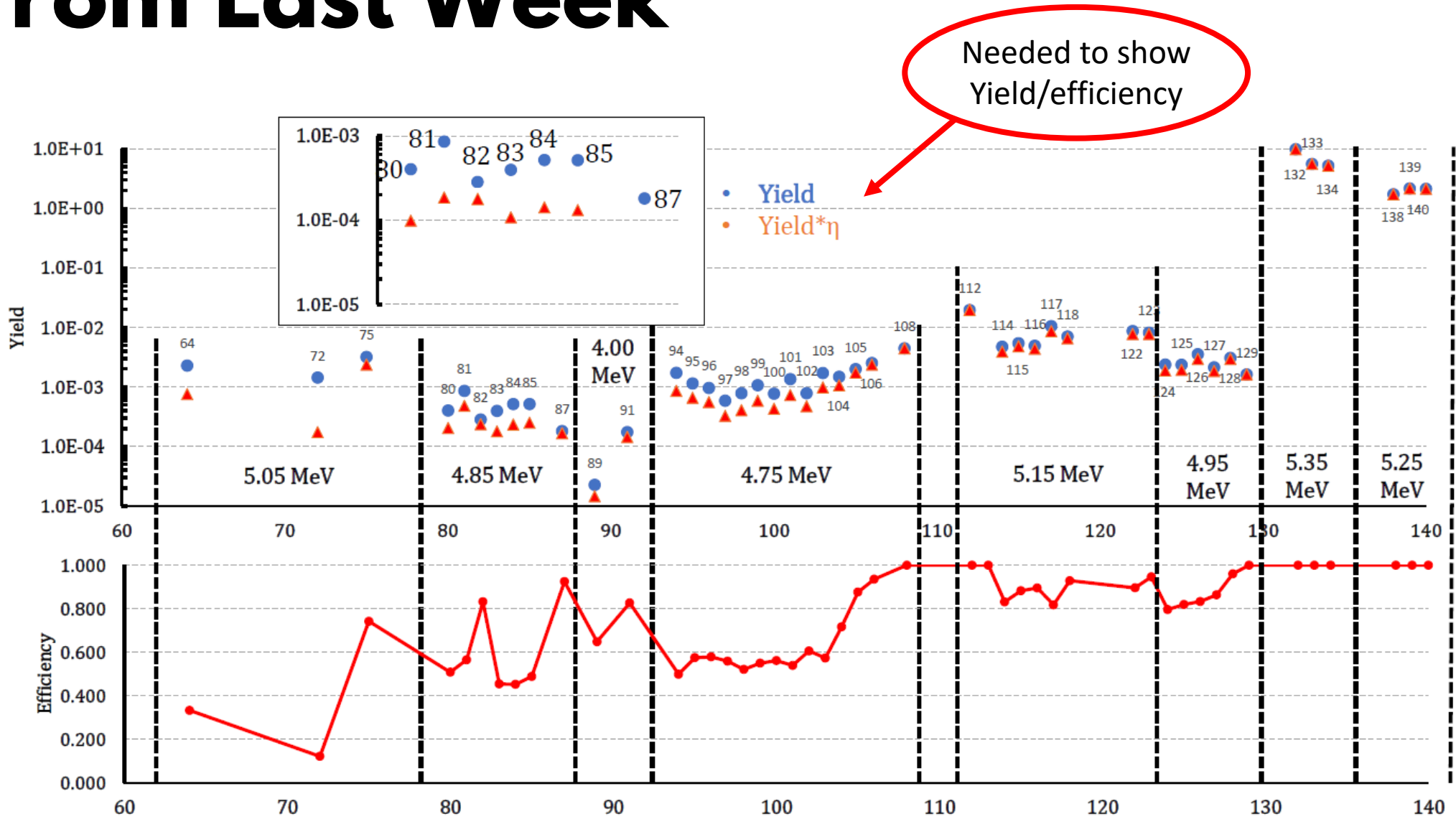


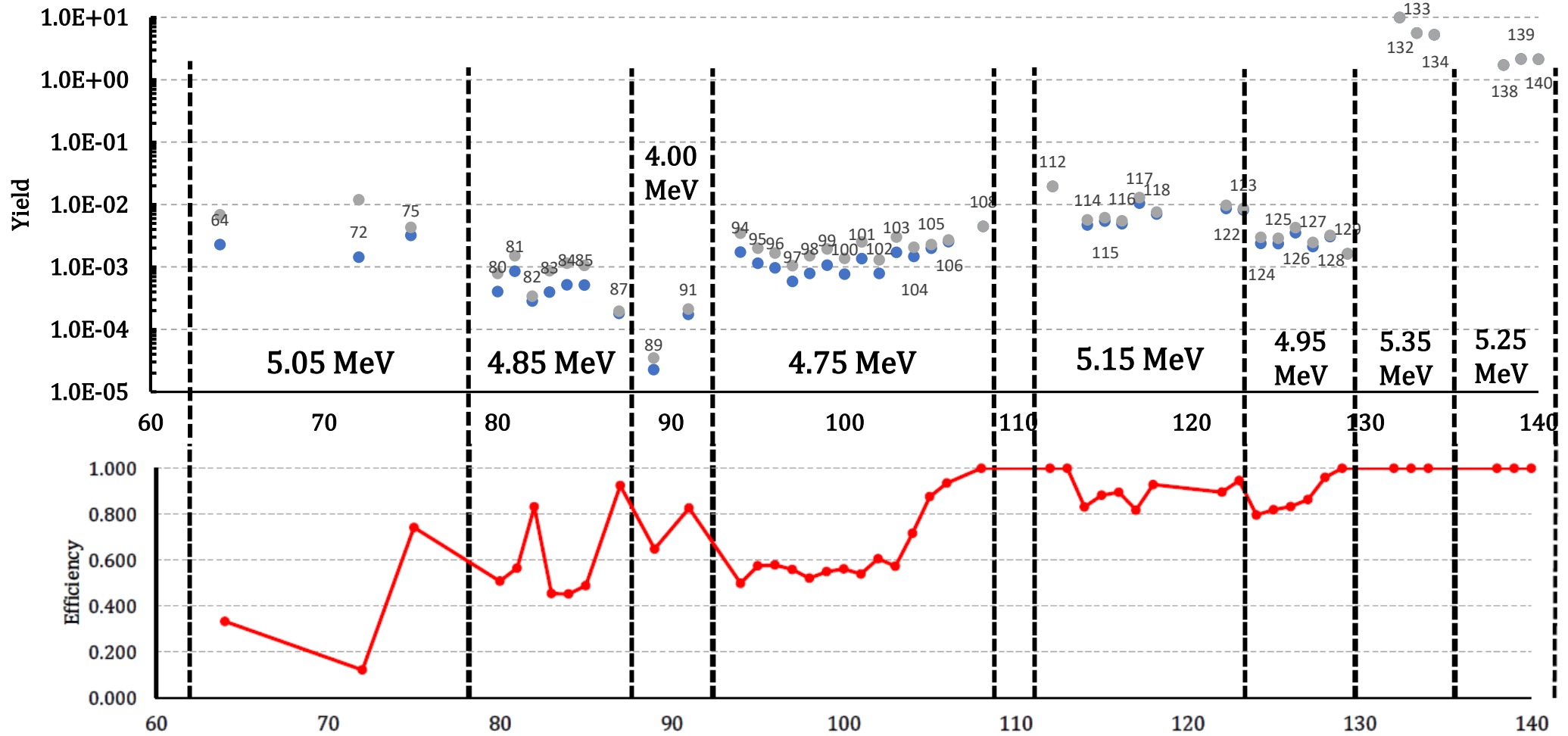
Bubble Update 07/16/2019

David Neto

From Last Week



From Last Week



Define upper and lower limits on Yield

- Include per run
 - Effect of efficiency
 - Statistical uncertainty in total, fiducial and background counts
 - Uncertainty in current (for testing just using 5%)
- Do weighted average of runs at given energy
- Include error bars in energy (± 50 KeV)

Note: Still in the middle of streamlining whole process (switch from spreadsheet to python) but this should be good for a rough sketch where we can still tweak things.

Preliminary Yield with limits

