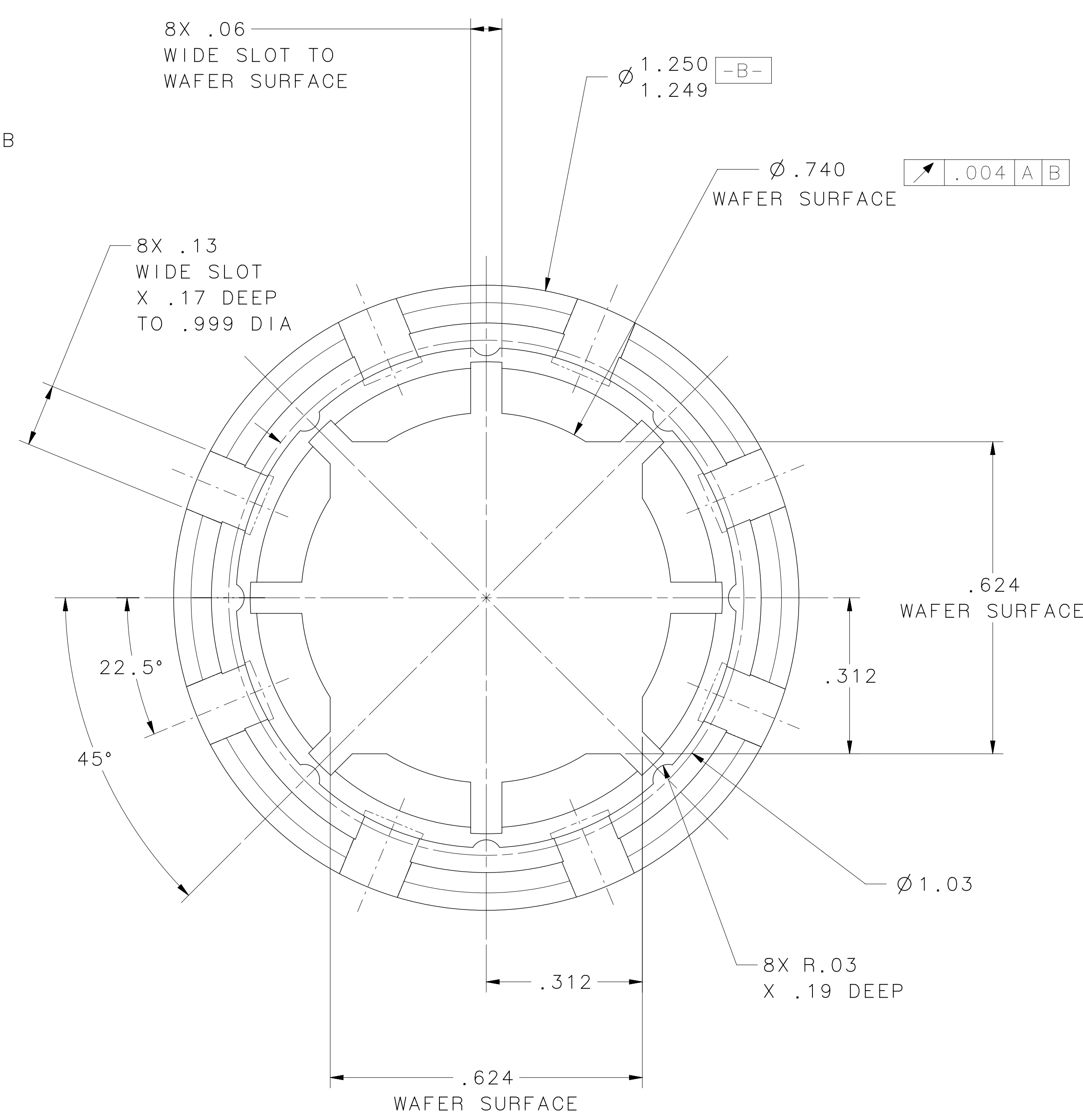
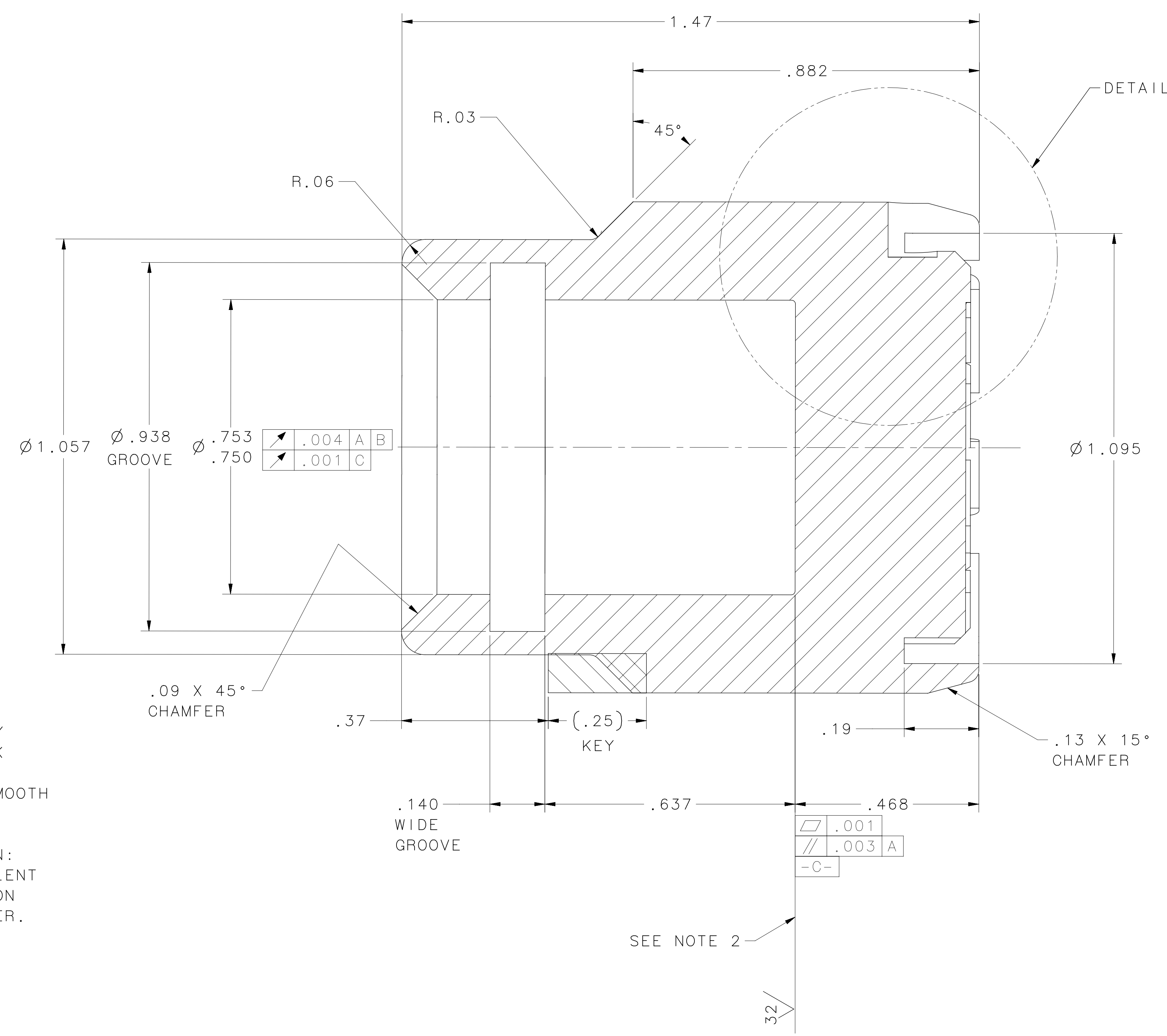
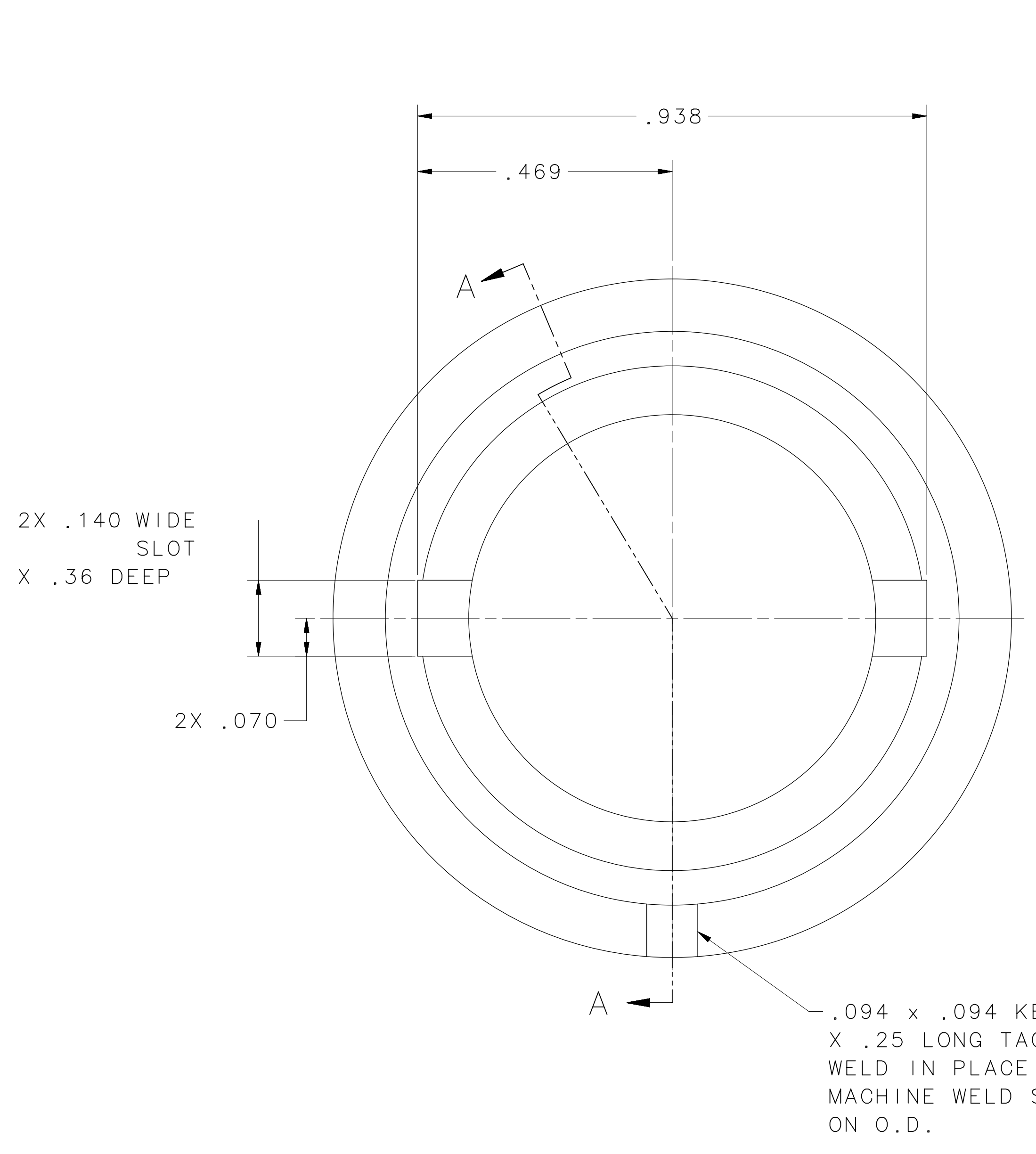
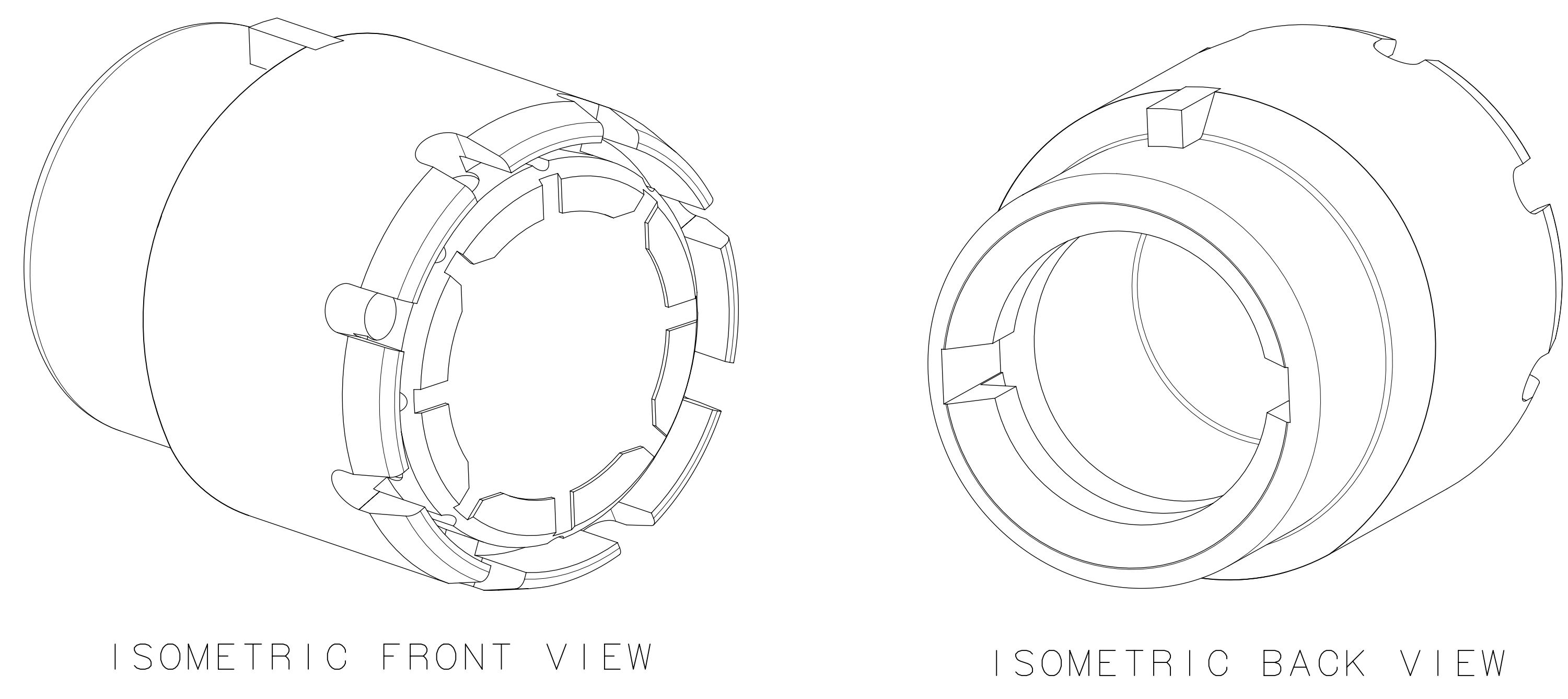
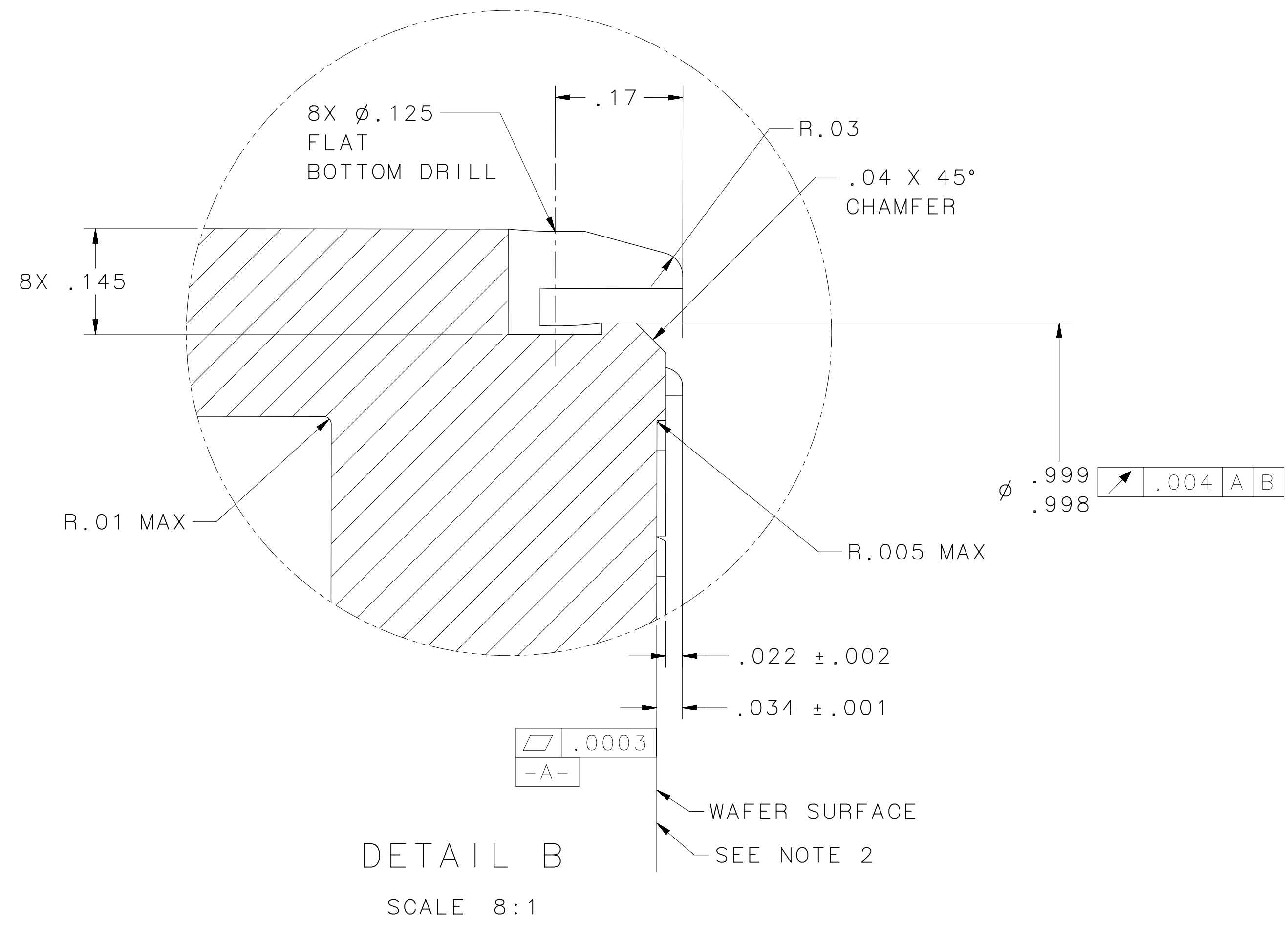


REVISION HISTORY				
ZONE	REV	DESCRIPTION	DATE	APPROVED



- NOTES:
- THIS IS AN ULTRA-HIGH VACUUM COMPONENT. THE FOLLOWING C.E.B.A.F. SPECIFICATIONS APPLY:  
#22631-S-001 FABRICATION OF ULTRA-HIGH VACUUM EQUIPMENT  
#22632-S-001 CLEANING AND HANDLING OF U.H.V. COMPONENTS
  - BE SURE TO REMOVE ANY MATERIAL LEFT AT DEAD CENTER OF THE CROWN.
  - SCRIBE OR ETCH CONSECUTIVE SERIAL NUMBER ON O.D. OF PUCK BODY.
  - PLATE WITH ELECTROLESS NICKEL .0008 THICK AFTER MACHINING.
  - ALL DIMENSIONS APPLY AFTER PLATING.

EACH SHEET OF MULTI-SHEET DRAWINGS SHALL ALWAYS HAVE THE SAME REVISION LEVEL.		MATERIAL 1006 STEEL		United States Department of Energy <b>Jefferson Lab</b> Thomas Jefferson National Accelerator Facility Newport News Virginia	
FINISH: MACHINED SURFACES DEBUR & BREAK ALL SHARP EDGES		UNLESS OTHERWISE NOTED		JLEIC MAGNETIZED BUNCHED ELECTRON COOLER MAGNETIZED GUN LDRD LDRD PUCK BODY STEEL	
DO NOT SCALE DRAWING		DATE: 27APR16		SIZE [DWG. NO.] E JL0035913	
DRAWN: G.HAYS		SCALE: 6:1		SHEET 1 OF 1	