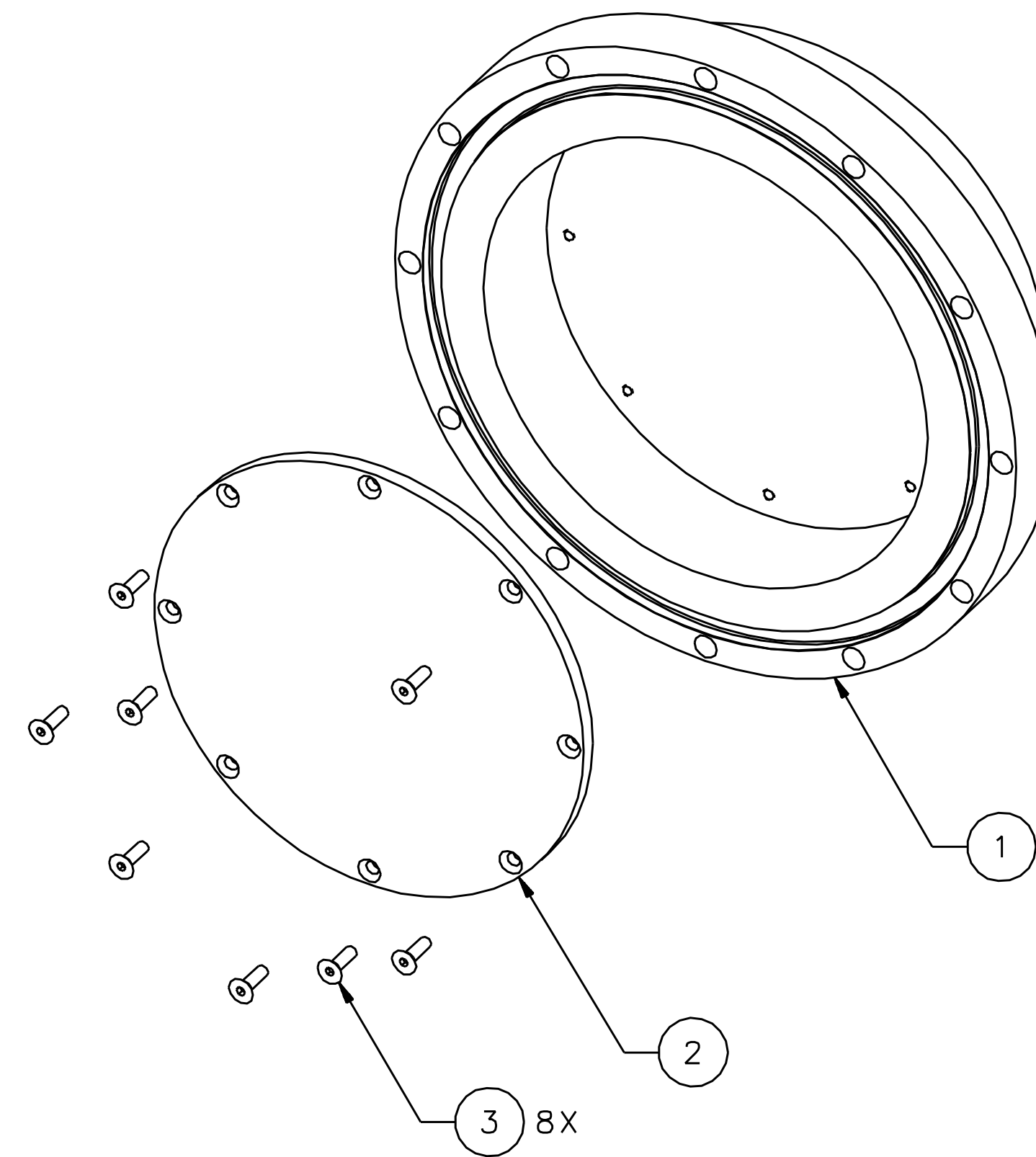
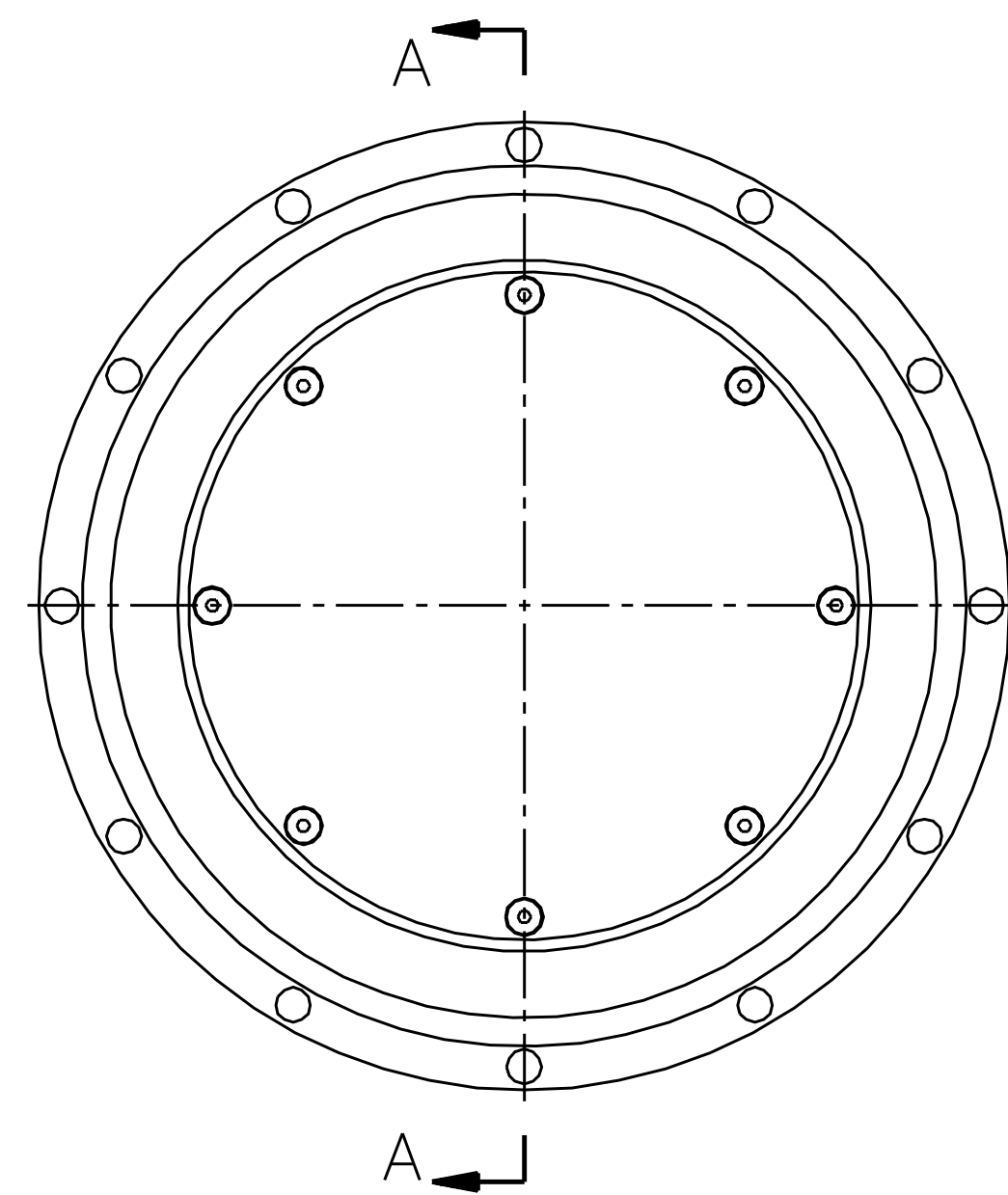


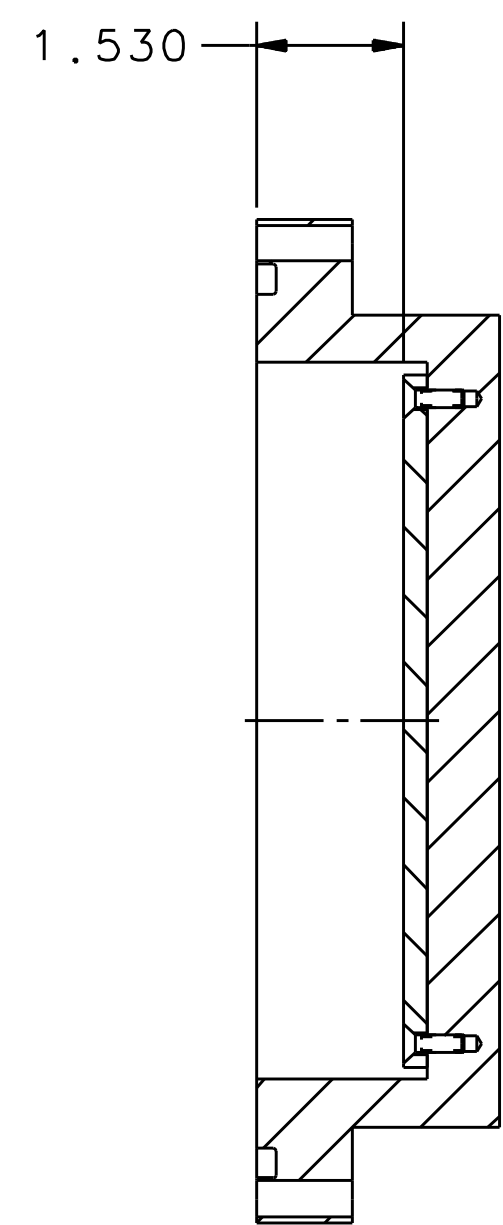
REVISION HISTORY				
ZONE	REV	DESCRIPTION	DATE	APPROVED



ISOMETRIC



VIEW A



SECTION A-A

NOTES:

1. SUGGESTED SOURCE FOR SCREWS IT#3
FASTENER-EXPRESS.COM
1-877-546-1148
2. SLOT SCREWS IT#3 FOR VENTING.

QTY REQD	ITEM NO	PART OR IDENTIFYING NO	NOMENCLATURE OR DESCRIPTION	MATERIAL SPECIFICATION	NOTES
8	3	-	SCREW, HEX SKT, FHCS 82DEG #10-32 UNF X 5/8 LG	ALUMINUM	1,2
1	2	JL0007961	BE END PLATE	-	-
1	1	JL0007963	MOTT DUMP PLATE	-	-

DIM & TOL PER ASME Y14.5. UNLESS OTHERWISE SPECIFIED DIMENSIONS ARE IN INCHES. TOLERANCES ARE: FRACTIONS DECIMAL ANGLES ± N/A .X ± .1 ± .50° .XX ± .01 .XXX ± .005	MATERIAL SEE PARTS LIST	United States Department of Energy Jefferson Lab <small>Thomas Jefferson National Accelerator Facility</small>		Newport News Virginia
		ACC INJECTOR 5MeV MOTT POLARIMETER DUMP PLATE SUB-ASSY		
THIRD ANGLE PROJECTION 	FINISH 125 UNLESS OTHERWISE NOTED SURFACES DEBURR & BREAK ALL SHARP EDGES	DO NOT SCALE DRAWING	SIZE DWG. NO. JL0004709	REV. -
DRAWN S.A.GREGORY	DATE DMMYY	SCALE 1:2	USED ON ASSY NO. N/A	SHEET 1 OF 1