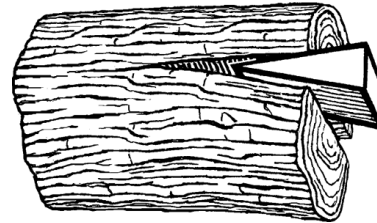


Commissioning Schedule

- The detailed planning for the overall effort to restart CEBAF is being managed with a software package called Task Juggler.
 - Link to task juggler http://opsweb.acc.jlab.org/TJ3/12GeV_CEBAF/Overview.html
- **Important Dates**
 - CAB Dry Run for Director's Review (5/23/2013)
 - Director's Commissioning Review (6/6-6/7/2013)
 - Start Ops System Reviews (6/20/2013)
 - Start ACC-I Geographic Reviews (8/23/2013)
 - Accelerator Readiness Review ACC-I (Late August)
 - Long Shutdown Ends (9/16/2013)
 - Hot Checkout Starts (9/18/2013)
 - ACC-I Run Period Starts (11/4/2013)
 - Shutdown for Holiday (12/20/2013)
 - Hot Checkout Starts (1/2/2014)
 - Accelerator Readiness Review ACC-II (Mid February)
 - ACC-II Run Period Starts (2/5/2014)
 - Shutdown for Summer (5/7/2014)
 - Accelerator Readiness Review ACC-III (Late August)
 - ACC-III Run Period Starts (9/22/2014)
 - Shutdown for Holiday (12/19/2014)



Seemingly earliest possibility to "run early" is Oct. 5th

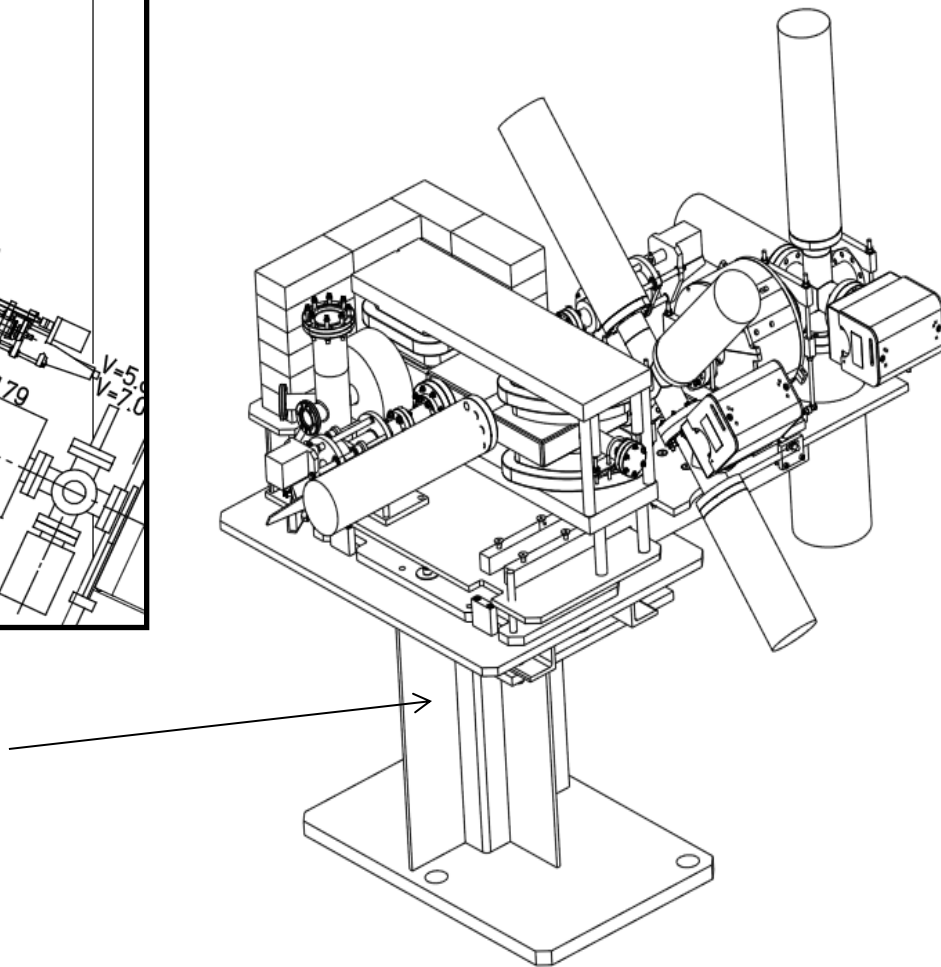
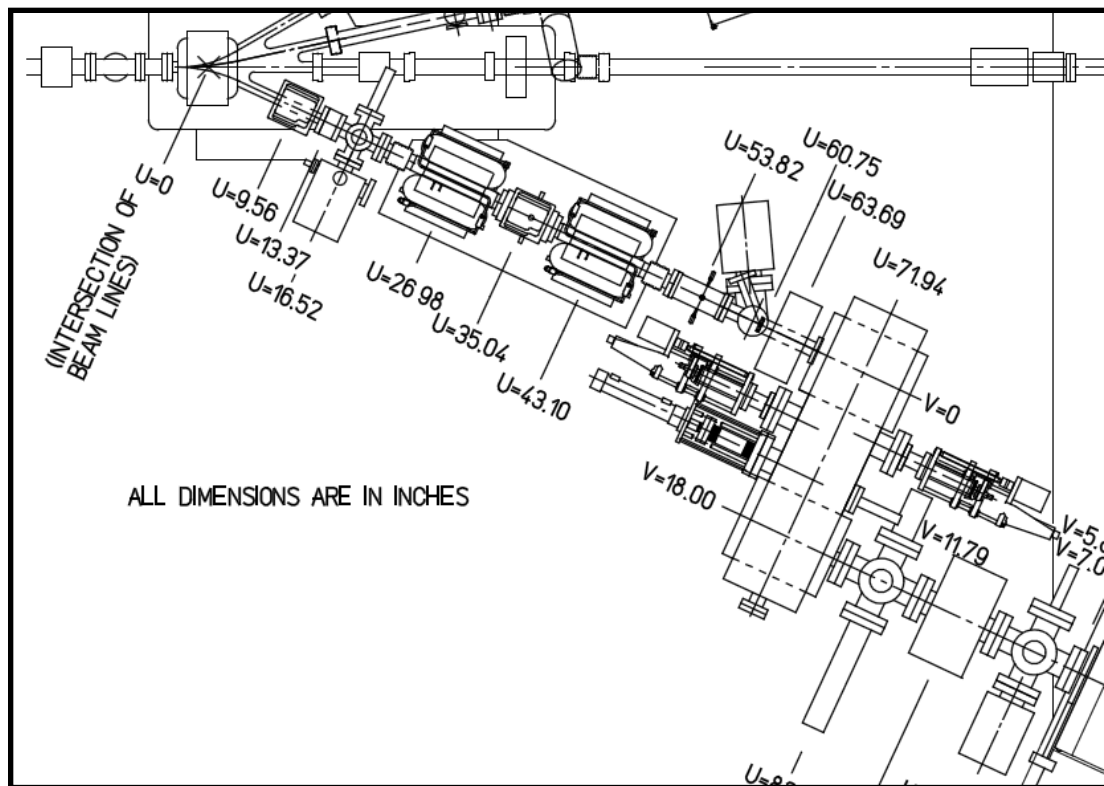
This translates into about 4 weeks of opportunistic tests.

Of course, includes turning injector on.

Tunnel Jobs - what else?

- Joe - PEPPo removal, Mott alignments
- Matt - Brock's and Pavel's bunch length monitors
- Riad - bubble chamber
- John - laser room

PEPPo Uninstall

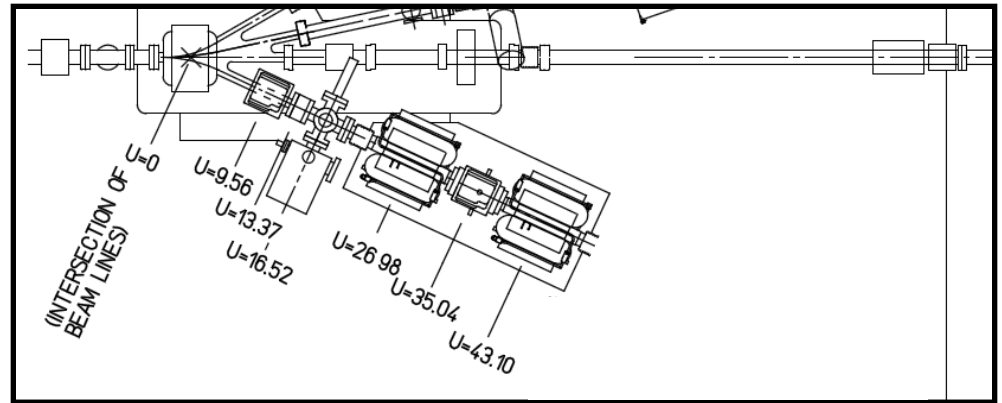


- Vent beam line
- Remove exp't - only leave pedestal
- Store equipment
- Spectrometer goes to MagTest
=> need to remove vac chamber

Terminate 5D beam line

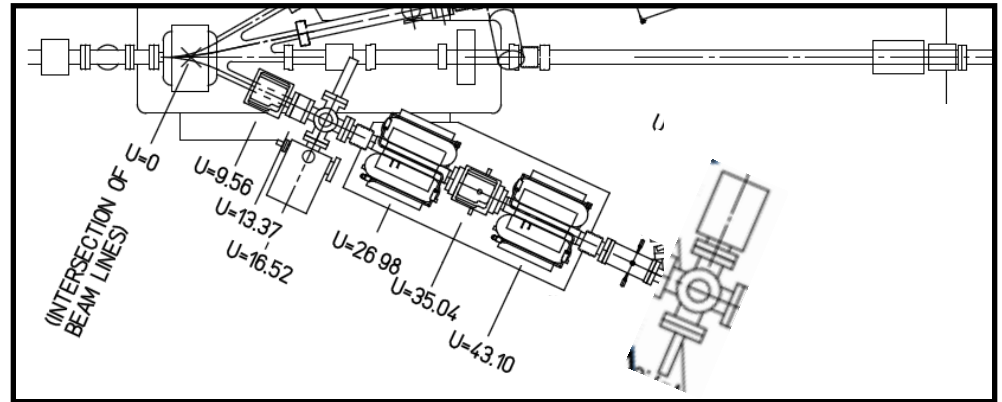
Option A

- Terminate w/ blank
- Keep under vacuum
- Disconnect valve



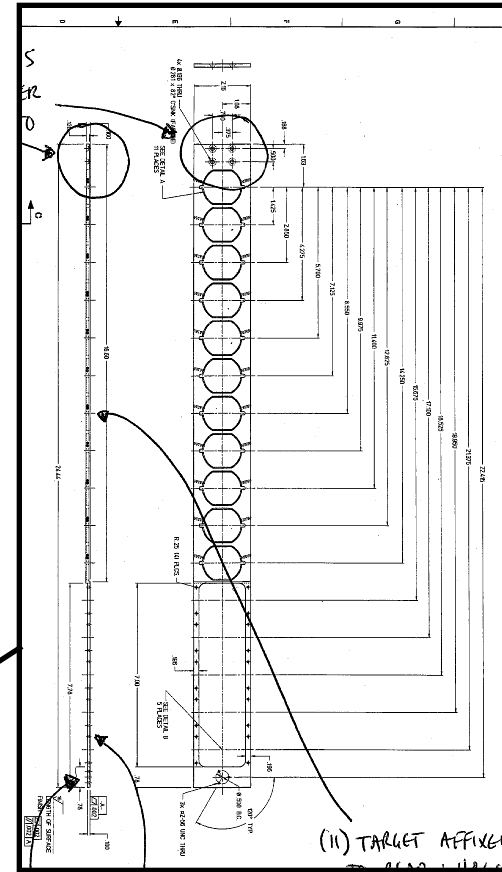
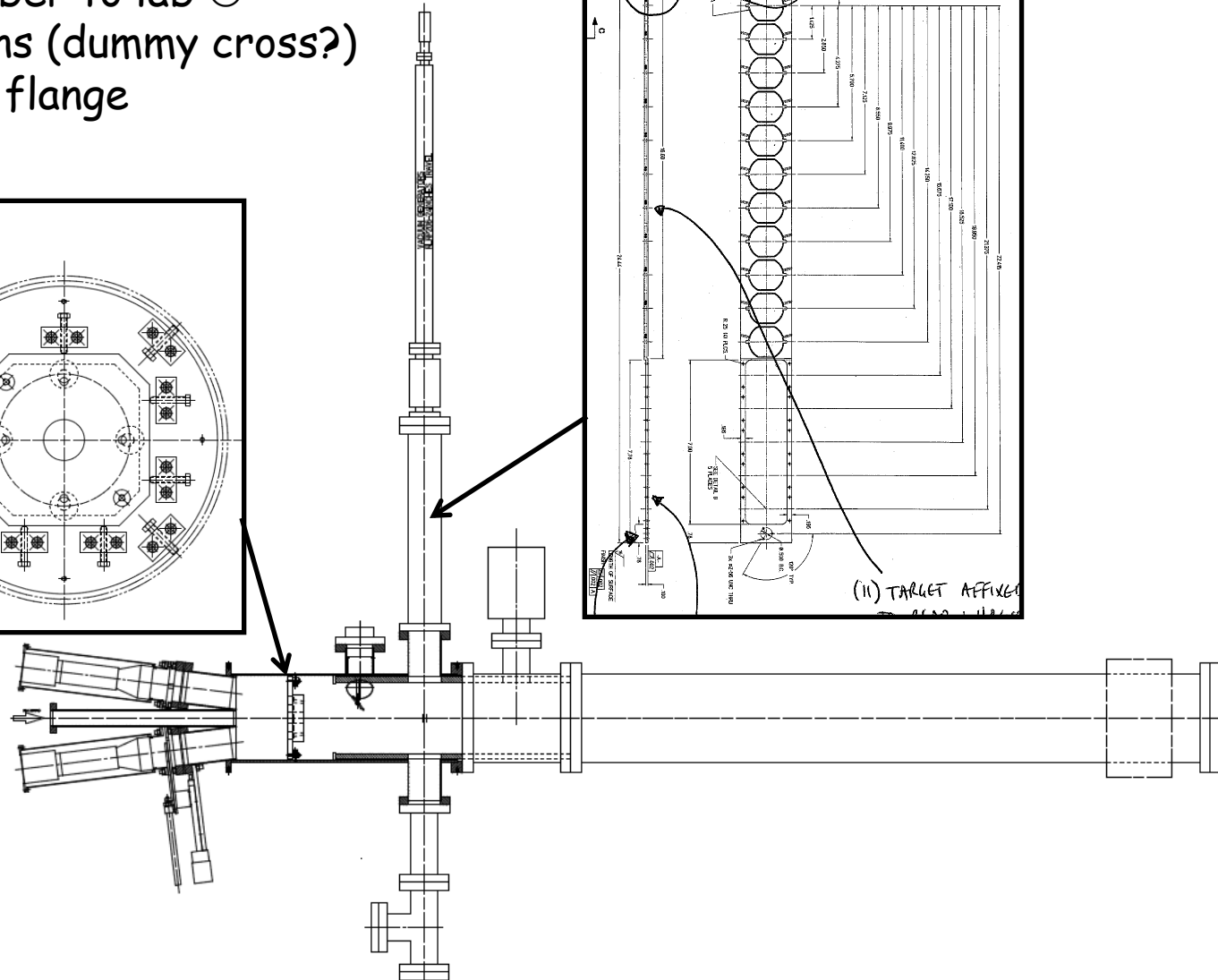
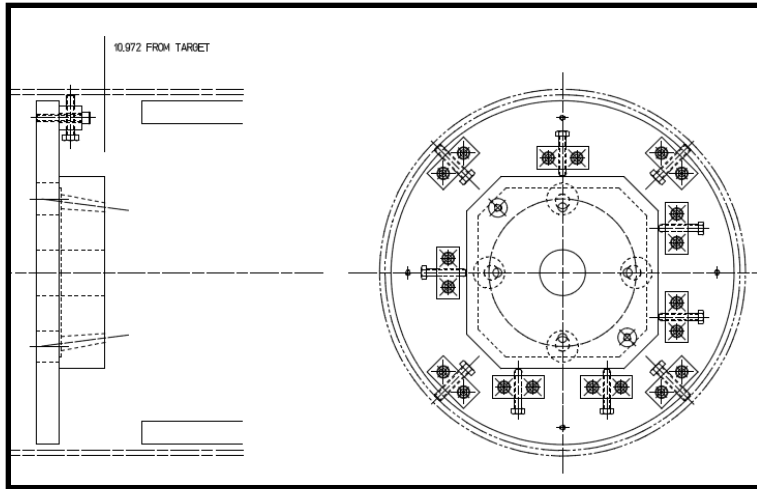
Option B

- Terminate w/ FCup
- Keep under vacuum
- Recertify w/ beam
- New support needed



Mott Alignment & Vacuum Work

- Vent Mott and remove target ladder
- Survey collimator in situ ☺
 - ⇒ Or remove chamber to lab ☹
- Calibrate tgt positions (dummy cross?)
- Maybe replace dump flange



500 keV region

