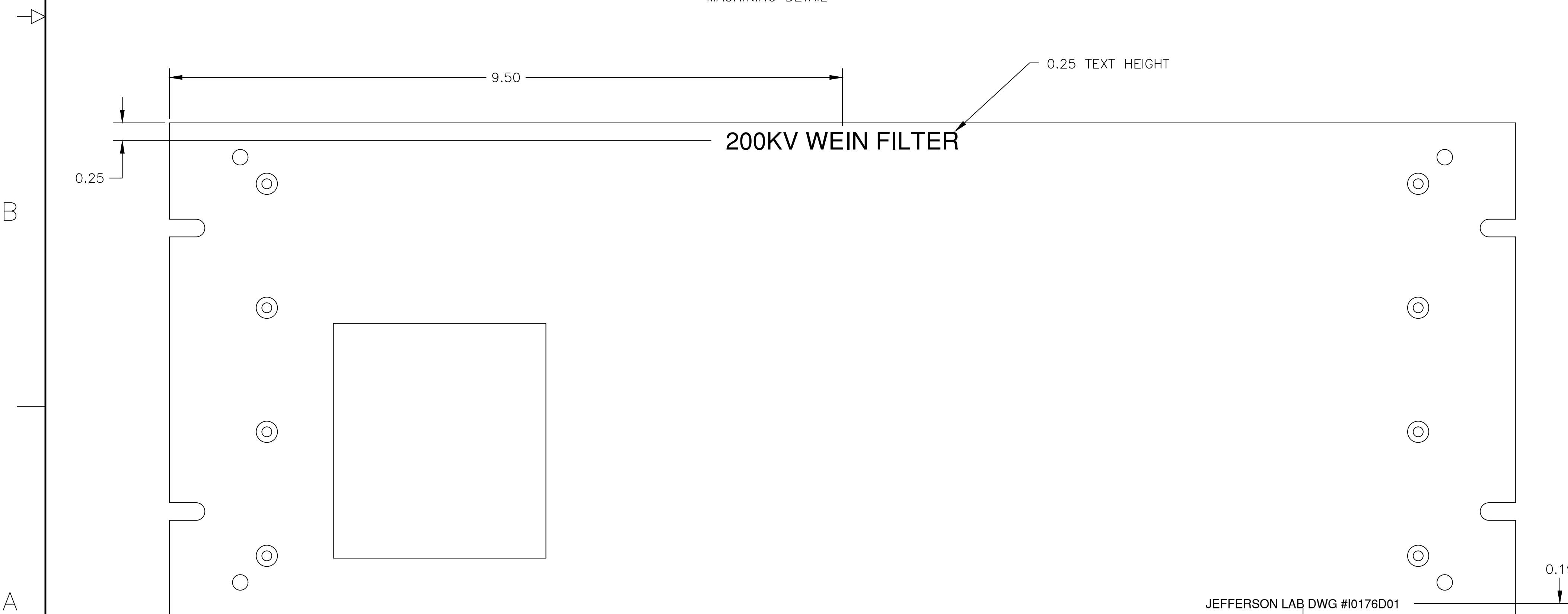


REVISIONS			
REV.	REMARKS	DRAWN	DATE



ITEM 1  
MACHINING DETAIL



ITEM 1  
LABELING DETAIL

- NOTES:
1. FEATURES SHOWN BUT NOT IDENTIFIED OR DIMENSIONED ARE PRE-EXISTING ON PURCHASED ITEM.
  2. CLEAN AND DEGREASE AFTER MACHINING.
  3. ALL TEXT IS 0.125" IN HEIGHT UNLESS OTHERWISE SPECIFIED

1	1	PRECISION METAL 61-003	CHASSIS FRONT PANEL	ALUMINUM	—
QTY REQD.	ITEM NO.	PART OR IDENTIFYING NO.	NOMENCLATURE OR DESCRIPTION	MATERIAL SPECIFICATION	TJNAF STOCK NO.
PARTS LIST					
MATERIAL		SEE PARTS LIST		UNITED STATES DEPARTMENT OF ENERGY <b>Jefferson Lab</b> Thomas Jefferson National Accelerator Facility NEWPORT NEWS VIRGINIA	
FINISH		SEE NOTES DEBURR & BRAM ALL SHARP EDGES UNLESS OTHERWISE NOTED		TITLE INJECTOR 200KV WEIN FILTER CHASSIS FRONT PANEL FABRICATION DRAWING	
DIM & TOL PER ANSI Y14.5 UNLESS OTHERWISE SPECIFIED DIMENSIONS ARE IN INCHES TOLERANCES ARE:		DO NOT SCALE DRAWING		SCALE 1"=1" SHOWN ON	
FRACTIONS DECIMAL ANGLES ± 1/64 .XX ± .01 ± .5° .XXX ± .005		DRAWN ZUKERMAN DATE 7/29/19		SIZE CAD I.D. NO. DRAWING NO. REV. D \\JLABGRP\EECAD 10178F1.DWG 10178D01 -	
JEFFERSON LAB DWG #10176D01			SCALE 1"=1" SHOWN ON SHEET 1 OF 1		