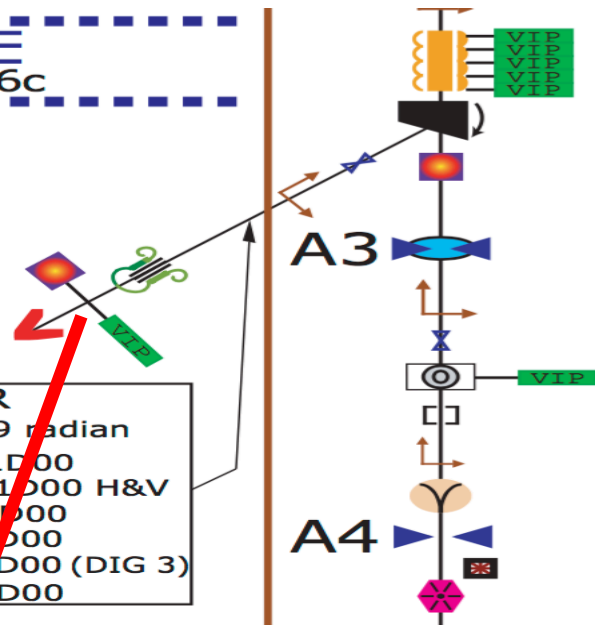


**CAPTURE**  
T= 500keV .86c

Wire scanner disconnected, so using next best (only!) thing...

**1D SPECTROMETER**  
Bend angle =  $30^\circ = 0.523599$  radian

BEAMLINE VALVE	VBV1D00
CORRECTOR	MAD1D00 H&V
HARP (DISCONNECTED)	IHA1D00
VIEWER +	ITV1D00
ION PUMP	VIP1D00 (DIG 3)
500 keV Dump (1 kW)	IDL1D00



CAPTURE ION PUMPS

DIPOLE

VIEW SCREEN

APERTURE ( $\varnothing=6\text{mm}$ ) / SOLENOID

CORRECTOR

BEAMLINE VALVE

DP CAN + ION PUMP

BPM

CORRECTOR

YAO CAVITY

APERTURE ( $\varnothing=6.5\text{mm}$ )

BLM (MPS)

SKEW QUAD

VIP0I06A,B,C,D,E (DIG 3)

MBO0I06

ITV0I06A

IFY0IA3 / MFL0I07

MAD0I07 H&V

VBV0I07

VDP0I07 + VIP0I07 (DIG 4)

IPM0I07

MBH0I07A H&V

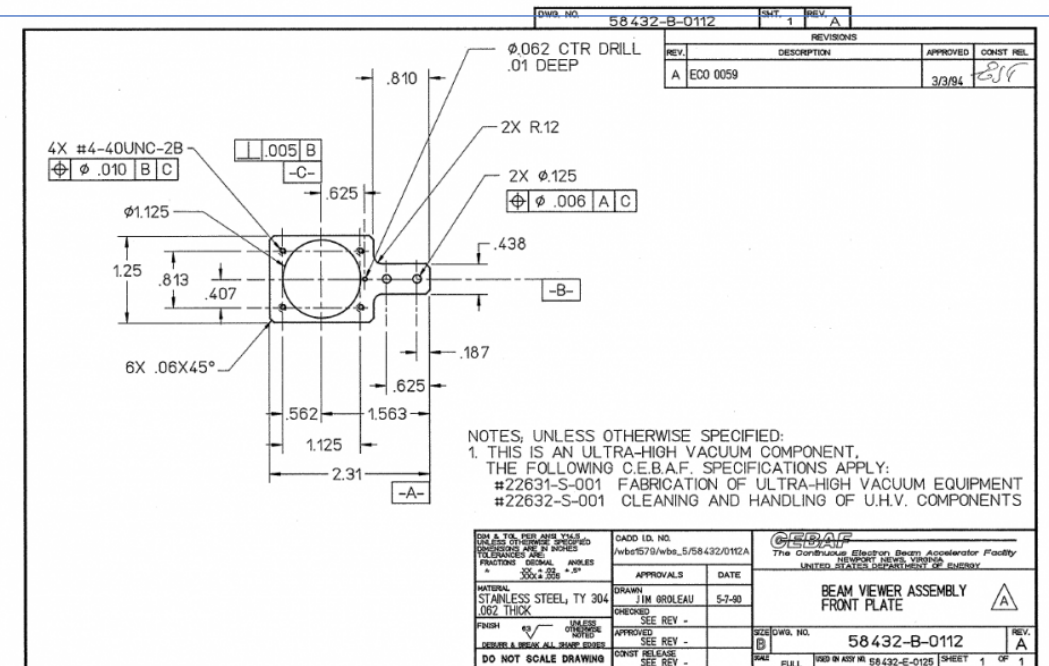
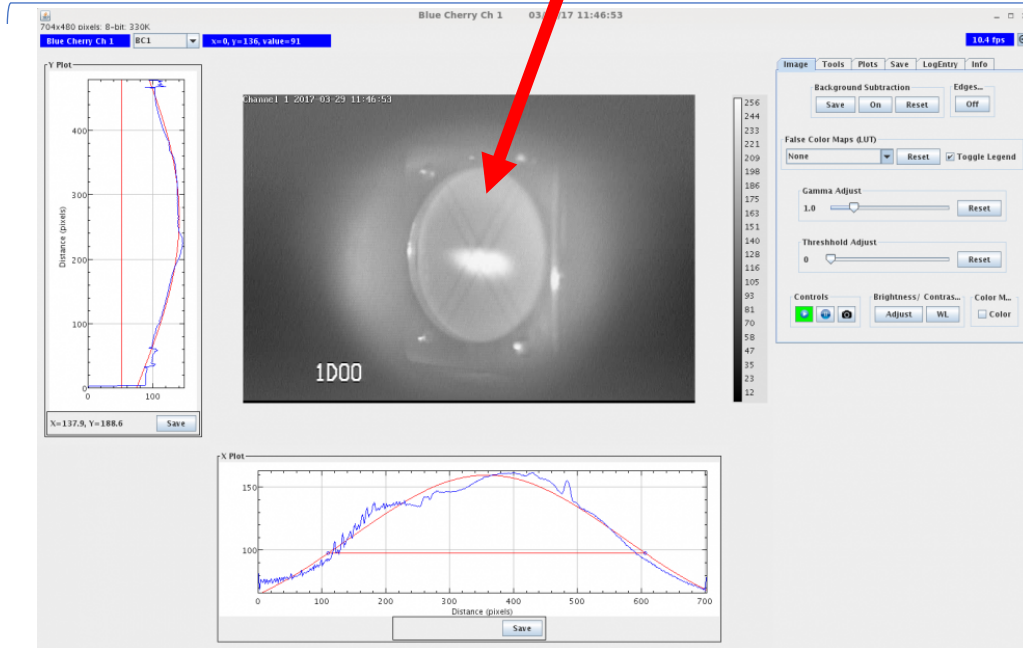
ICV0I07

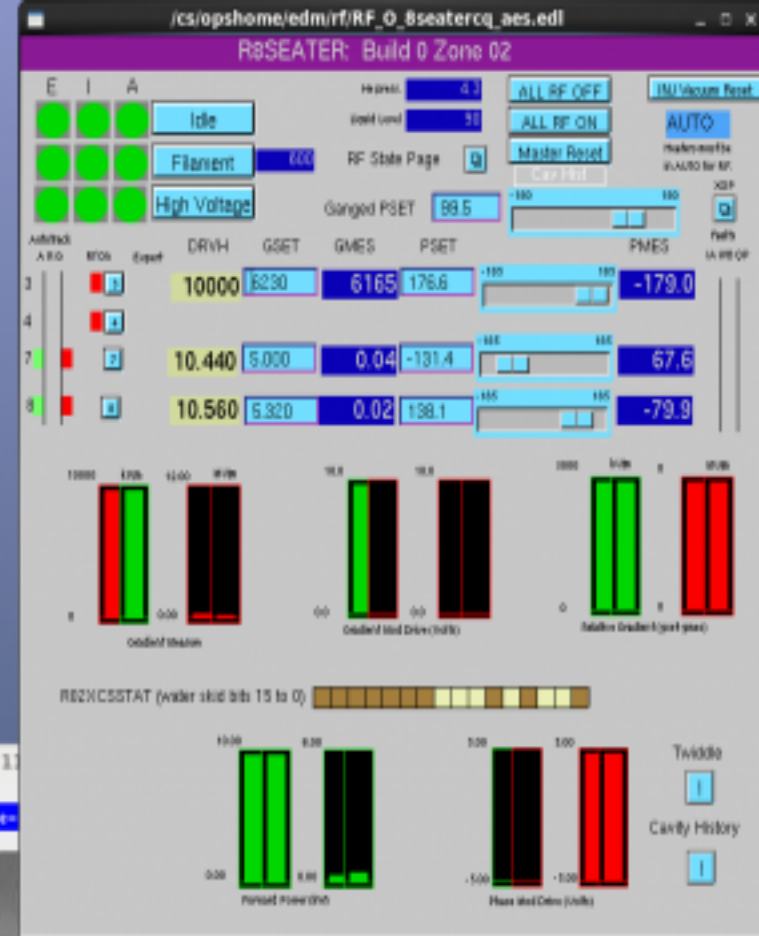
IFY0IA4

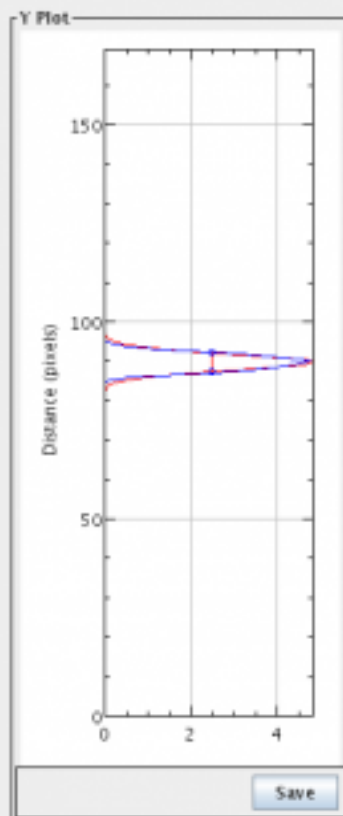
ILM0I07

MQS0I07

Camera calibration is about 9 pixels / 1mm







130keV = 130kV dc gun  
Buncher + RF turned off, intrinsic spread  
FWHM = 1.4mm

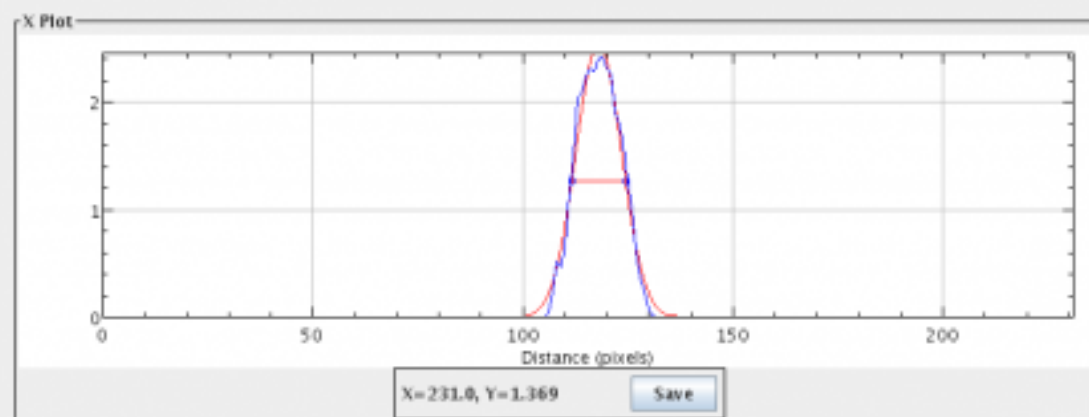
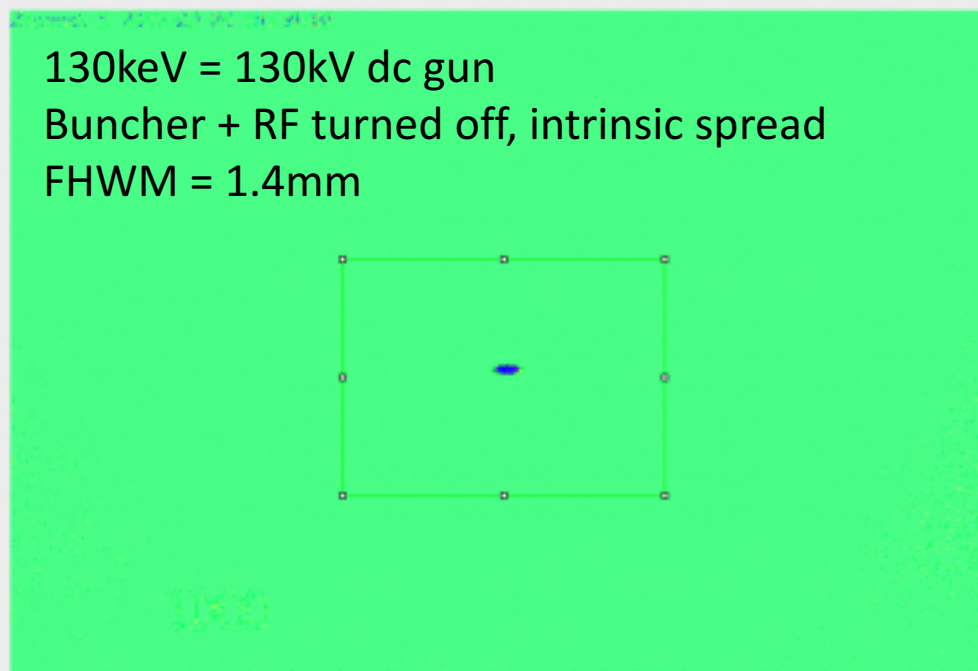


Image Tools Plots Save LogEntry Info

Horizontal ...  
**X PLOT**

Vertical Plots  
**Y PLOT**

Show Fits  
☒

Units  
Units: **pixels**

AverageOff  
Averaging Off: ☐

X Fit Data

Centroid:	118.0471
$\sigma$ :	005.4617
2" $\sigma$ :	010.9235
FWHM:	012.8614
Y Min:	000.0000
Y Max:	002.5478

Y Fit Data

Centroid:	089.7417
$\sigma$ :	002.0604
2" $\sigma$ :	004.1208
FWHM:	004.8519
Min:	000.0000
Max:	004.9677

