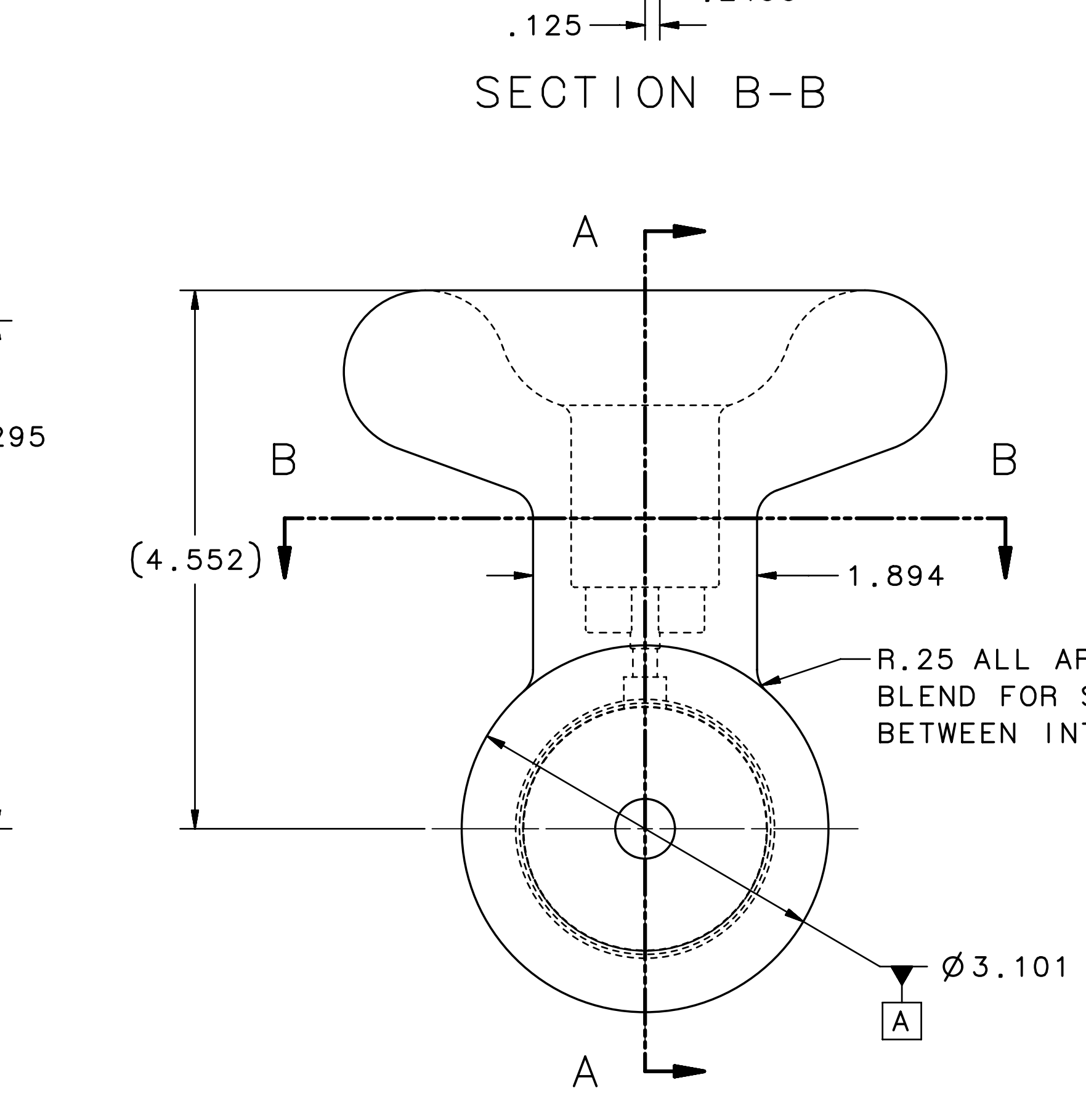
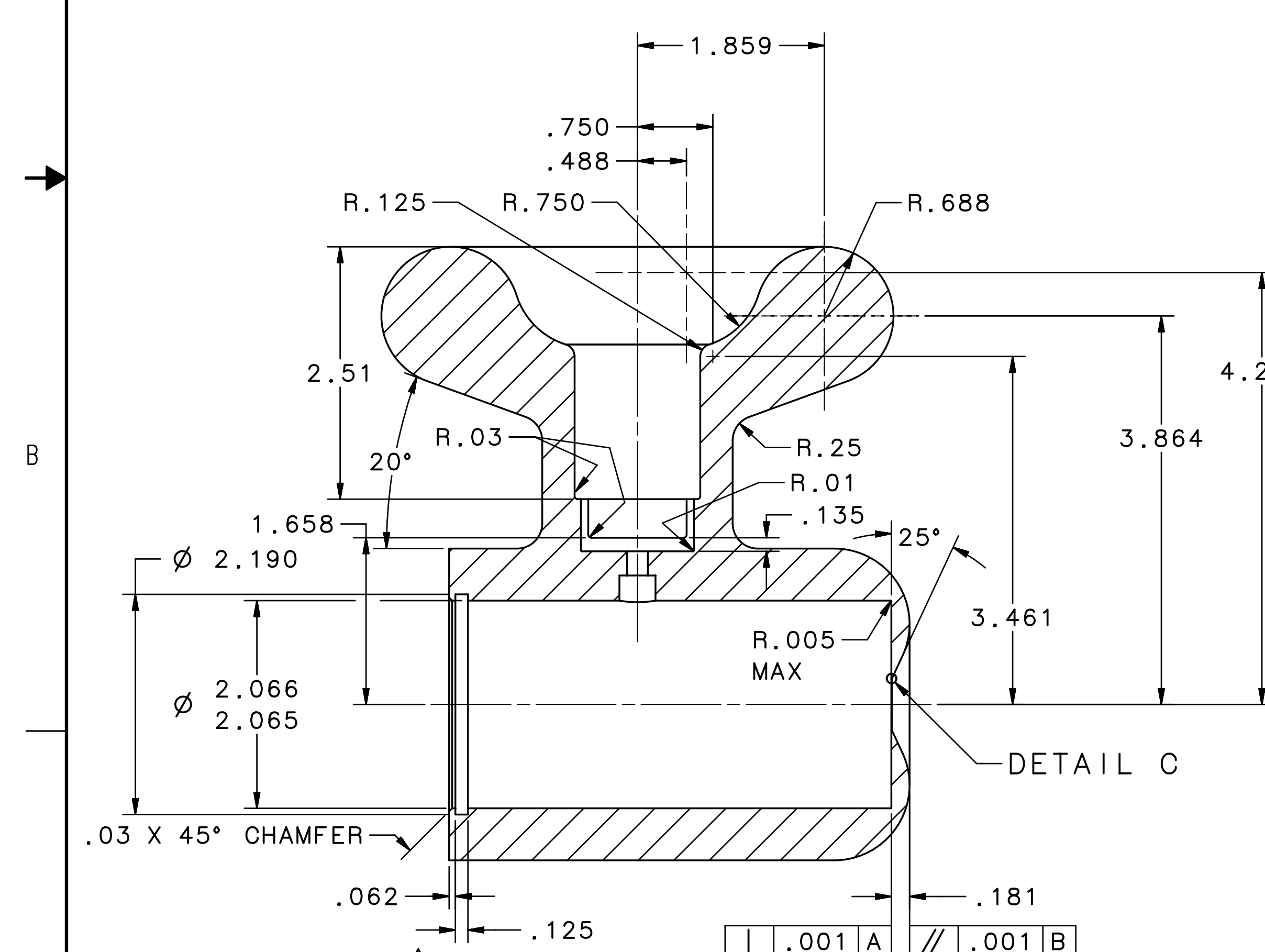
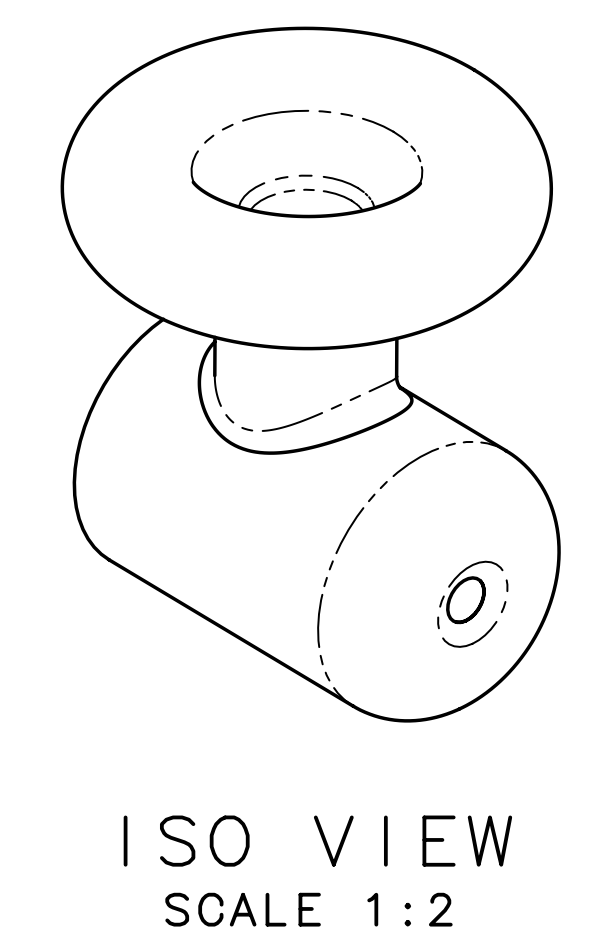
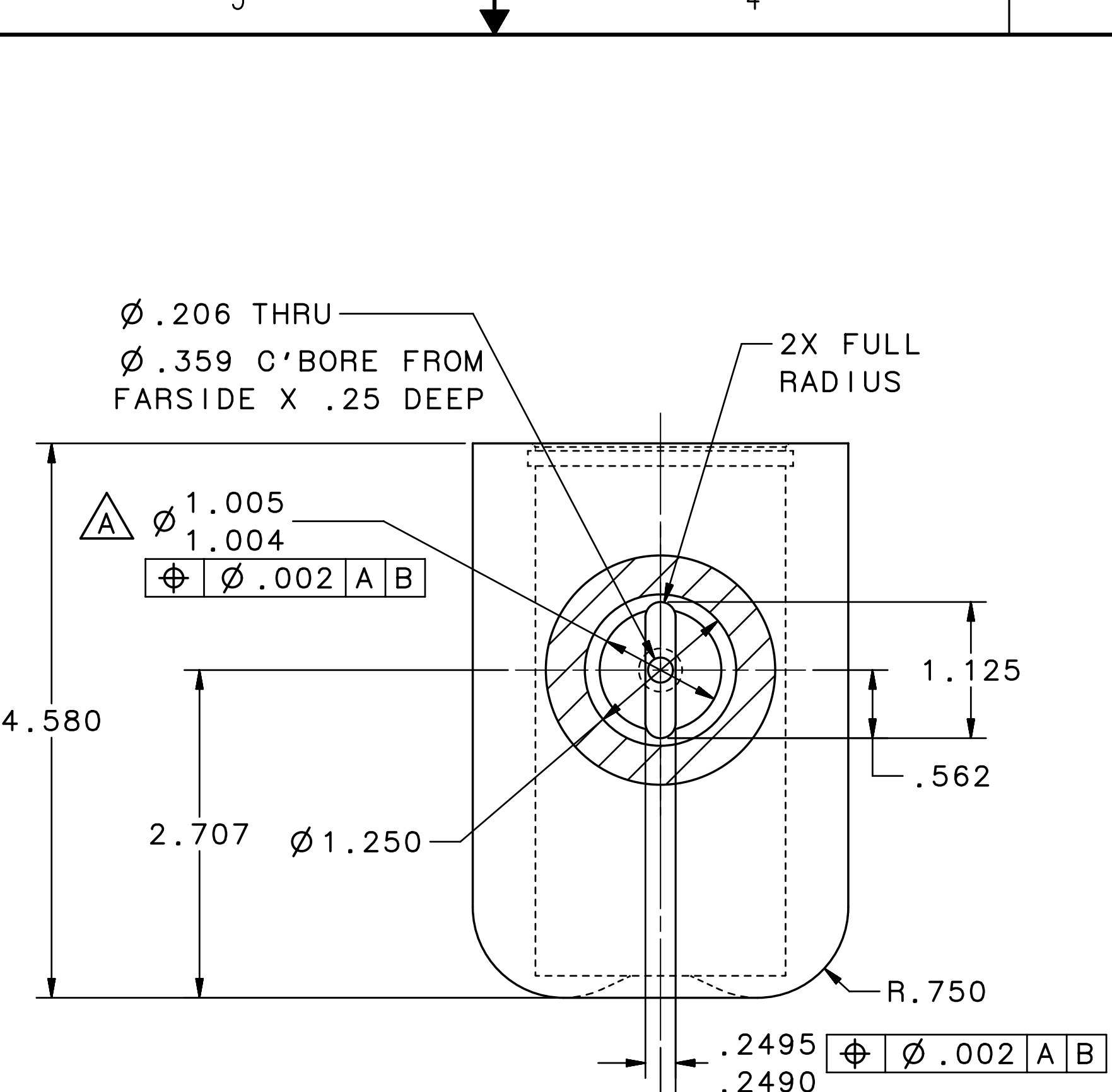
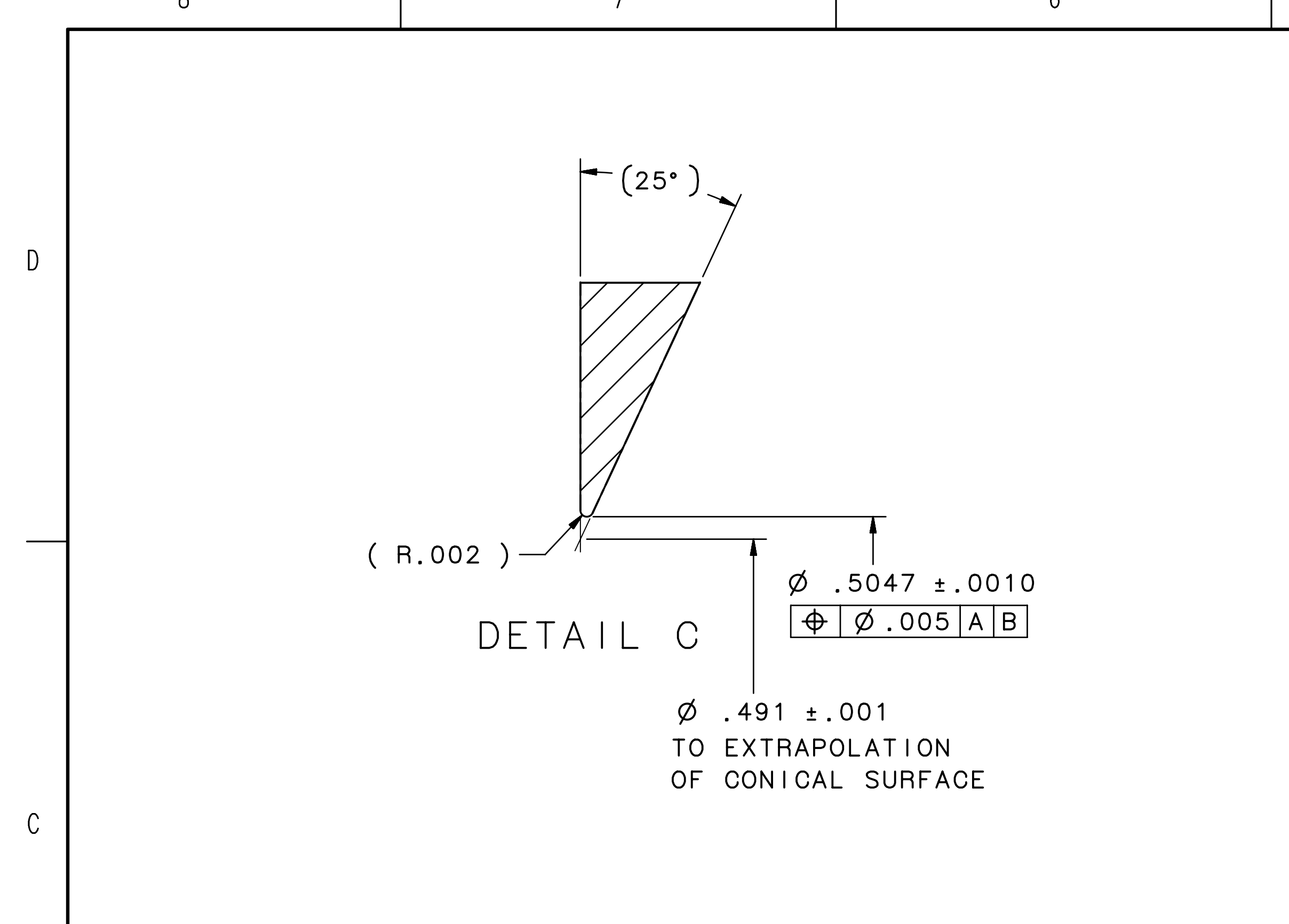


| REVISION HISTORY | | | |
|------------------|-----|--------------------------------|--------------|
| ZONE | REV | DESCRIPTION | DATE/REVISER |
| 7A | A | Ø 1.004/1.005 WAS 1.002/1.003. | 12JAN18/JA |
| 5D | | ADDED GROOVE. | |



- NOTES:
- USE THE FOLLOWING JLAB SPECIFICATIONS
FABRICATION OF ULTRA HIGH VACUUM EQUIPMENT: #22631-S-001
CLEANING AND HANDLING OF U.H.V COMPONENTS: #22632-S-001
 - ALL EXTERIOR SURFACES SHALL BE MACHINED TO 16 FINISH.
 - ALL INTERIOR SURFACES SHALL BE MACHINED TO 63 FINISH.
 - AFTER FINAL MACHINING, ELECTROPOLISH ITEM, DIAMOND PASTE POLISH AND THEN HIGH PRESSURE RINSE.



| | | | | |
|--|---|---|---|-----------------------|
| DIM & TOL PER ASME Y14.5 2009. UNLESS OTHERWISE SPECIFIED DIMENSIONS ARE IN INCHES. TOLERANCES ARE: FRACTIONS DECIMAL ANGLES ± 1/8 .X ± .1 ± .50° .XX ± .01 .XXX ± .003 | MATERIAL | United States Department of Energy | Jefferson Lab Thomas Jefferson National Accelerator Facility | Newport News Virginia |
| | ASTM A240 316L STAINLESS STEEL | CEBAF INJECTOR 200 KeV GUN HIGH VOLTAGE GUN T-SHAPED ELECTRODE WITH SHED | | |
| THIRD ANGLE PROJECTION | FINISH SEE NOTE UNLESS OTHERWISE NOTED MACHINE SURFACES DEBURR & BREAK ALL SHARP EDGES | DO NOT SCALE DRAWING | SIZE DWG. NO. D JL0045108 | REV. A |
| DRAWN J. ARMSTRONG | DATE 20MAR17 | SCALE 1:1 | USED ON ASSY NO. N/A | SHEET 1 OF 1 |