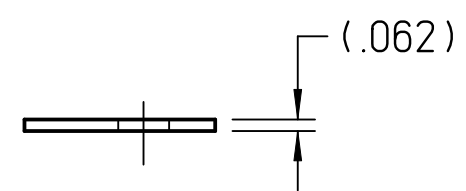


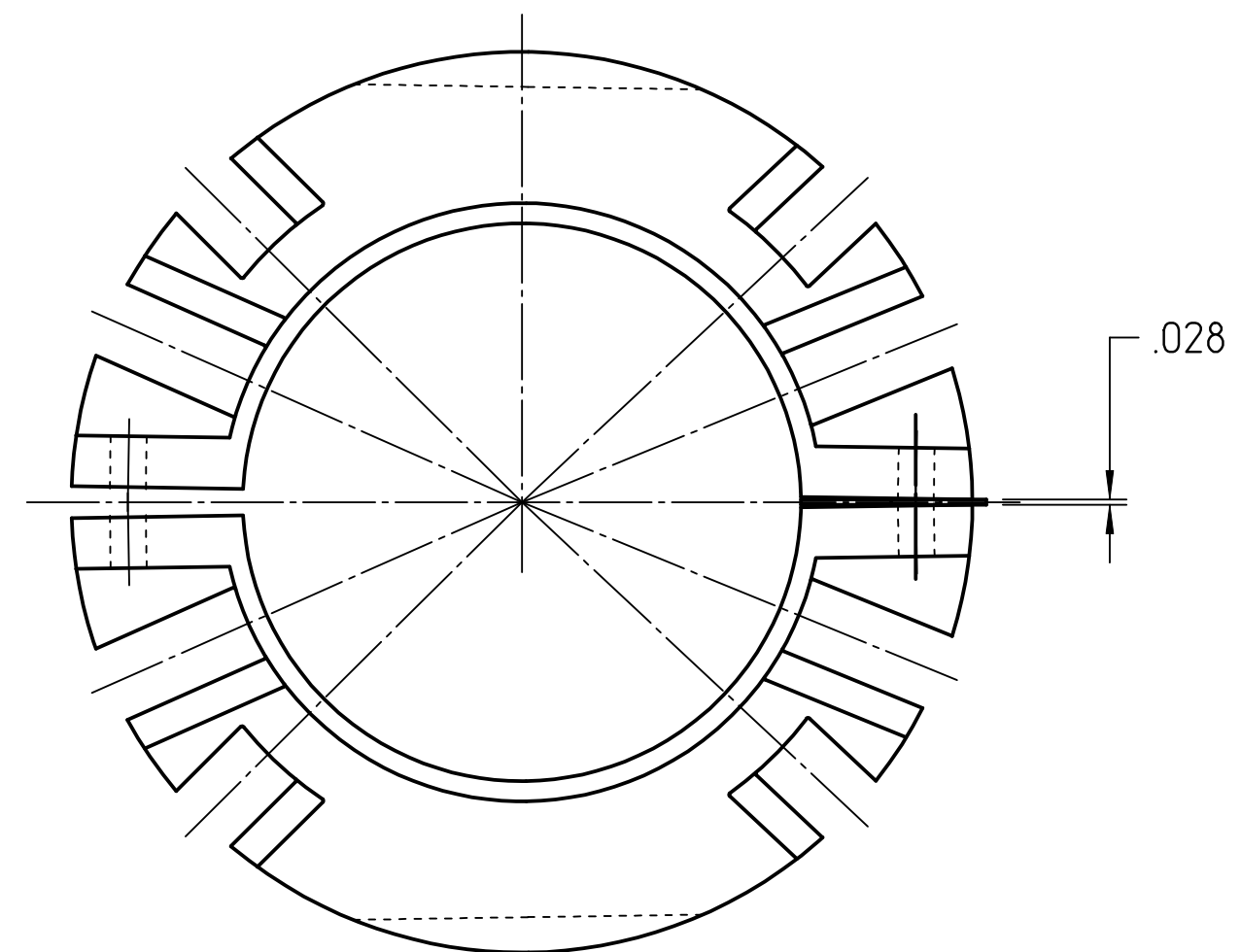
MATERIAL: STAINLESS STEEL 304
 QUANTITY: 6 EACH
 MAKE FROM LAMINATED SHIM
 MCMASTER-CARR 9718K47

2X ϕ .266 THRU

THIS WILL BE USED ON DRAWING
 JL009113



NOMINAL THICKNESS INSTALLED IS .028 THICK FOR 1.688°
 EACH .002 THICK LAYER CHANGES THE ANGLE .048°



LOOKING DOWNBEAM