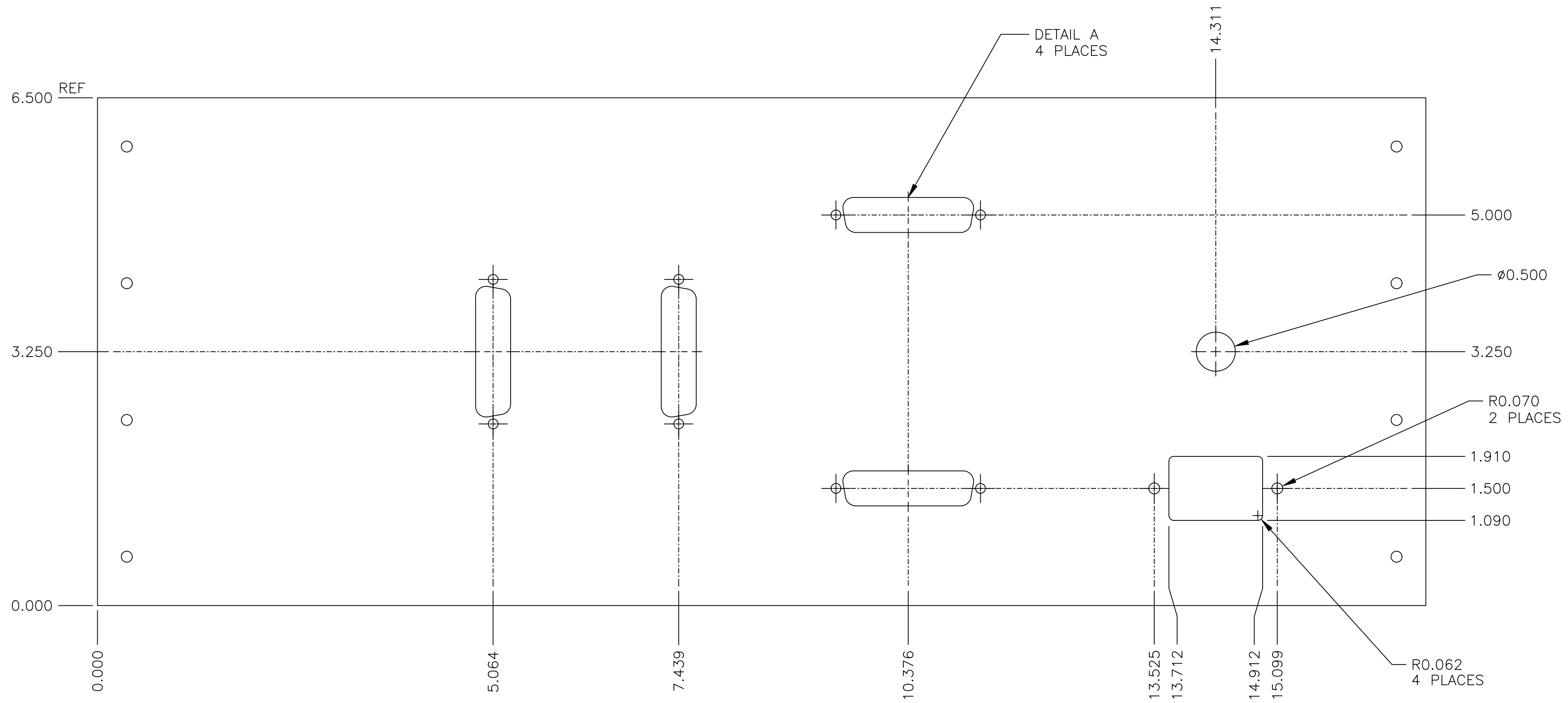
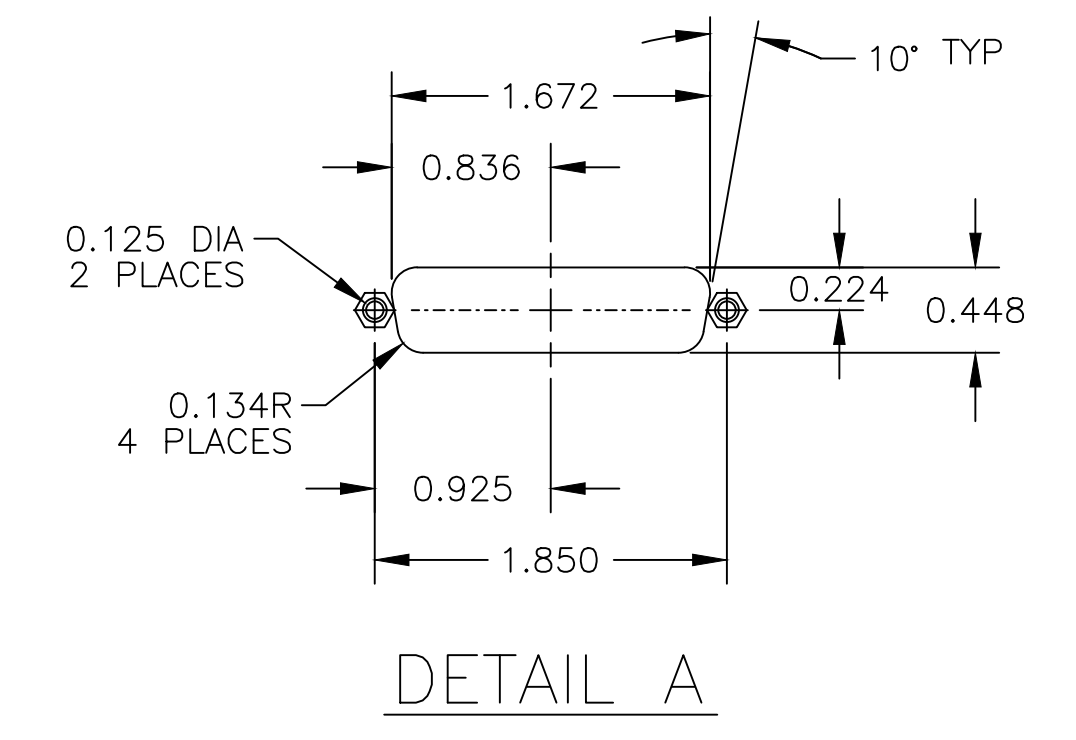


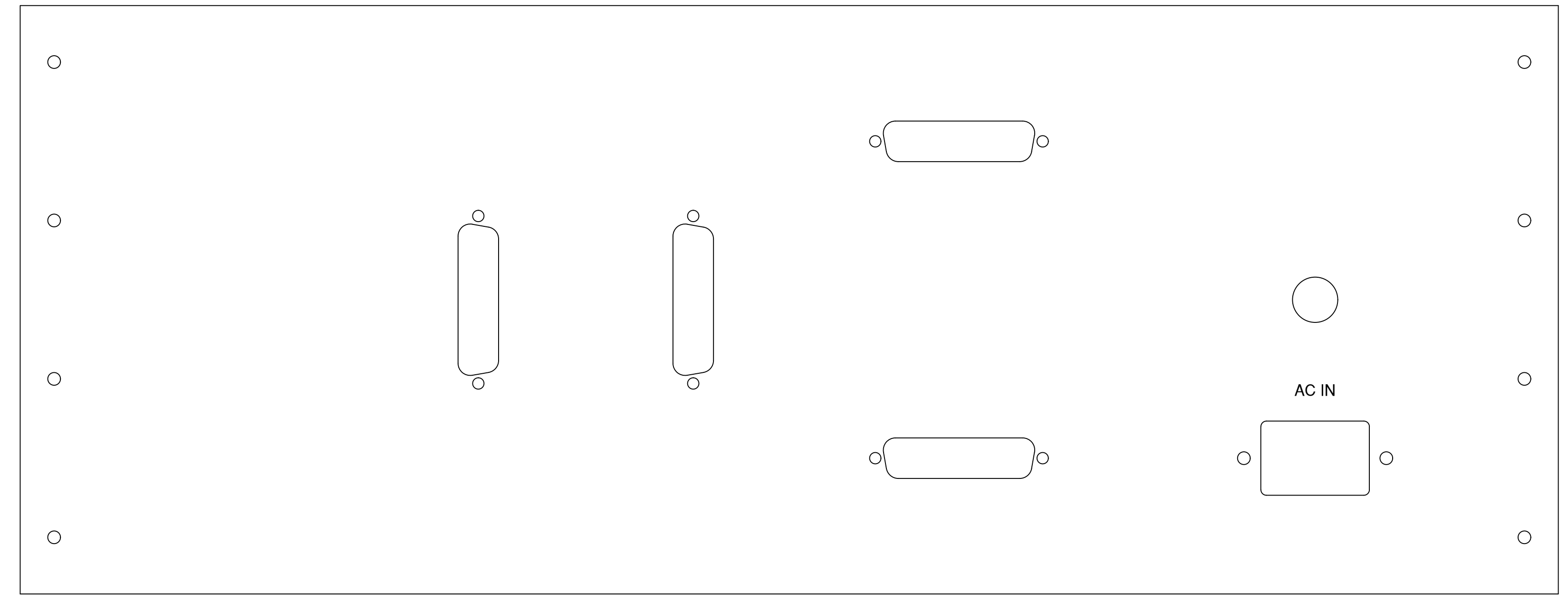
| REVISIONS | | | |
|-----------|---------|-------|------|
| REV. | REMARKS | DRAWN | DATE |
| | | | |



ITEM 1
MACHINING DETAIL



DETAIL A



ITEM 1
LABELING DETAIL

- NOTES:
1. FEATURES SHOWN BUT NOT IDENTIFIED OR DIMENSIONED ARE PRE-EXISTING ON PURCHASED ITEM.
 2. CLEAN AND DEGREASE AFTER MACHINING.
 3. ALL TEXT IS 0.125" IN HEIGHT UNLESS OTHERWISE SPECIFIED AND CENTERED ABOVE OR BELOW PANEL FEATURES.

| | | | | | |
|--|----------|---|-----------------------------|------------------------|--|
| 1 | 1 | PRECISION METAL 62-003 | CHASSIS REAR PANEL | ALUMINUM | — |
| QTY REQD | ITEM NO. | PART OR IDENTIFYING NO. | NOMENCLATURE OR DESCRIPTION | MATERIAL SPECIFICATION | TJNAF STOCK NO. |
| PARTS LIST | | | | | |
| MATERIAL | | UNITED STATES DEPARTMENT OF ENERGY Jefferson Lab Thomas Jefferson National Accelerator Facility NEWPORT NEWS VIRGINIA | | | |
| SEE PARTS LIST | | TITLE INJECTOR 200KV WEIN FILTER CHASSIS REAR PANEL FABRICATION DRAWING | | | |
| FINISH STOCK DEBURR & BRCAK ALL SHARP EDGES UNLESS OTHERWISE NOTED | | DO NOT SCALE DRAWING | | SIZE | CAD I.D. NO. DRAWING NO. REV. |
| DIM & TOL PER ANSI Y14.5 UNLESS OTHERWISE SPECIFIED DIMENSIONS ARE IN INCHES TOLERANCES ARE: FRACTIONS DECIMAL ANGLES ± 1/64 .XX ± .01 ± .5' .XXX ± .005 | | DRAWN ZUKERMAN | | DATE 7/29/19 | SCALE 1"=1" SHOWN ON I0179D01 SHEET 1 OF 1 |