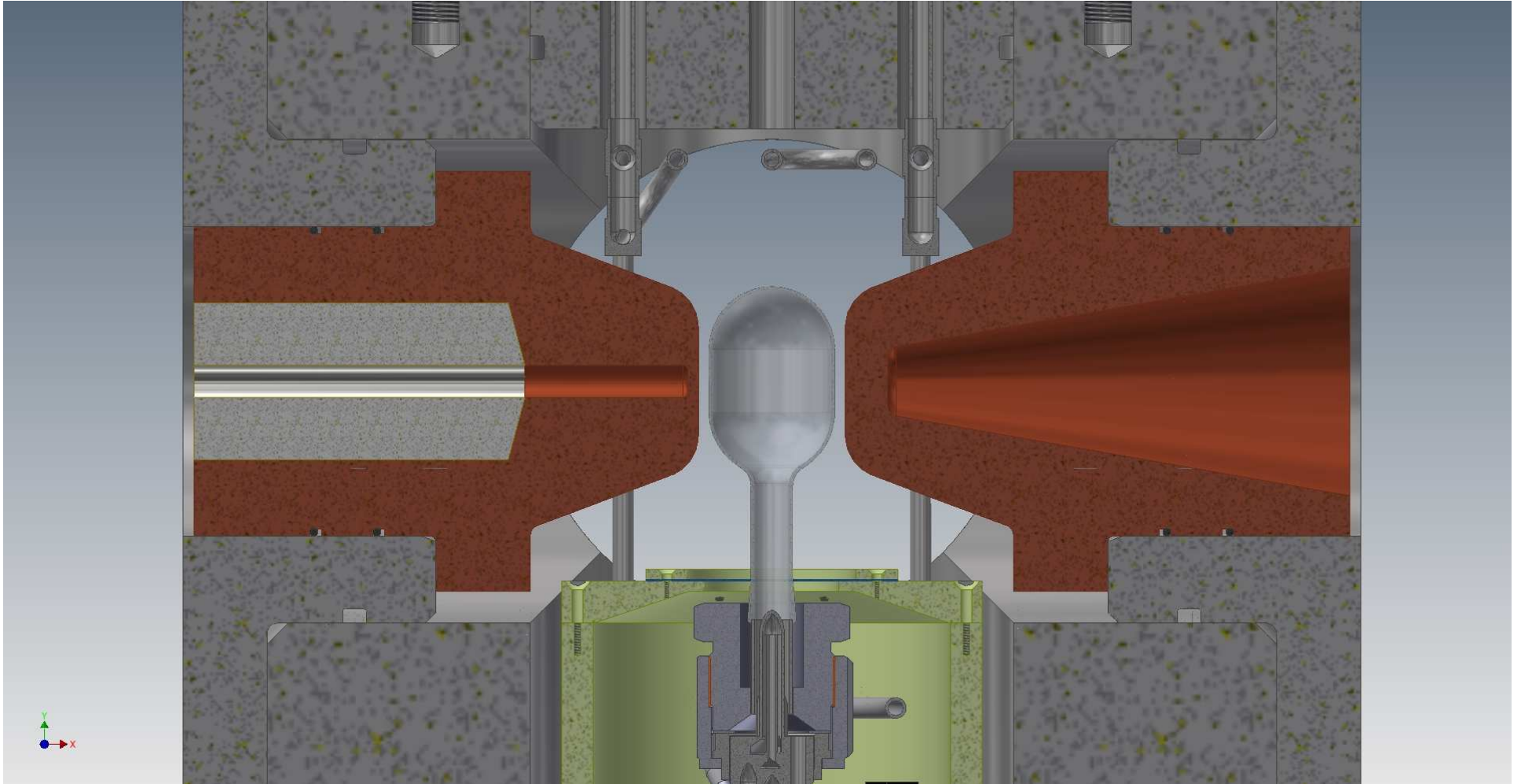
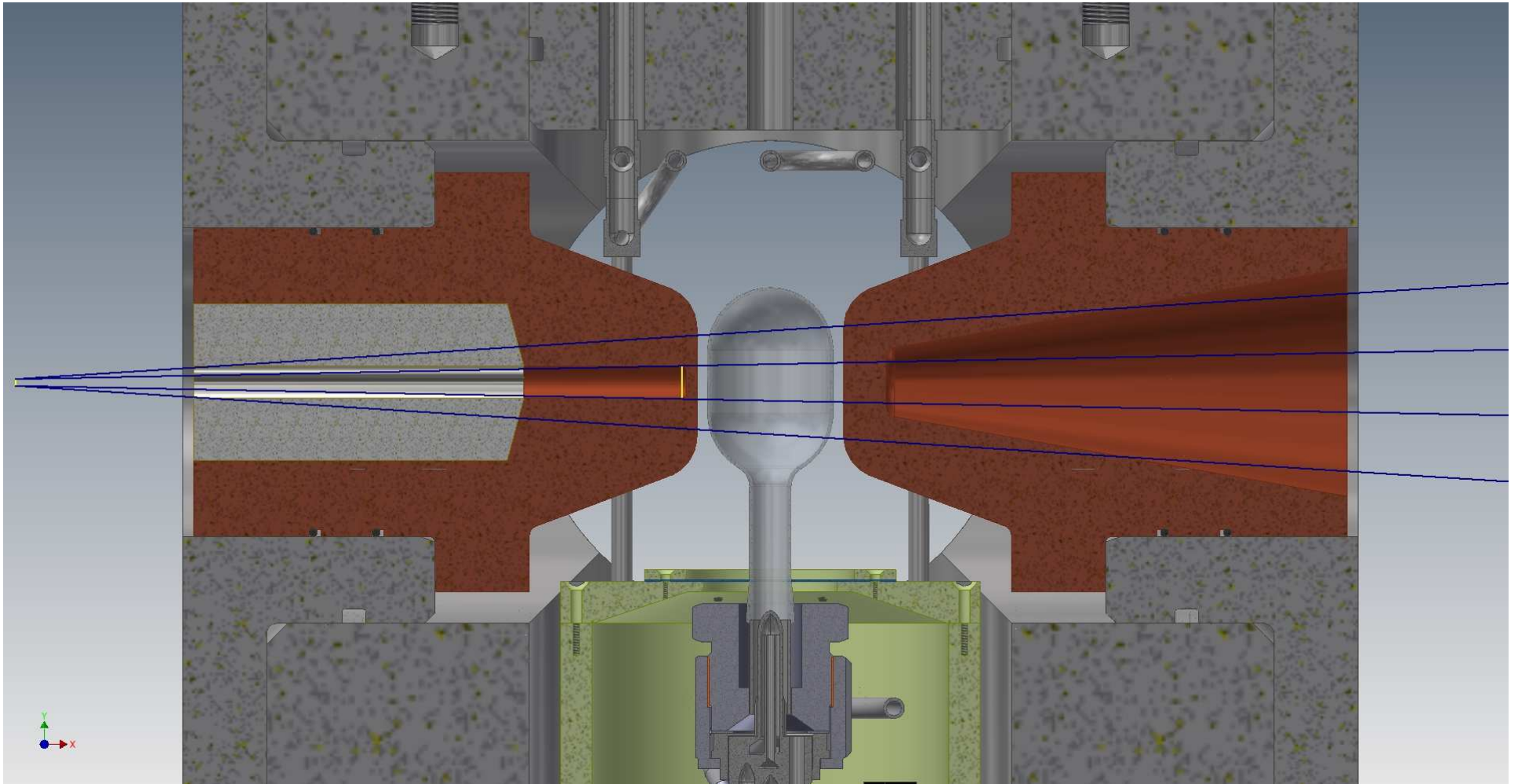


Beam Flanges: Entrance Collimator, Exit Cone
Replaceable Collimator Inserts ~ 50mm Diameter 100mm Long

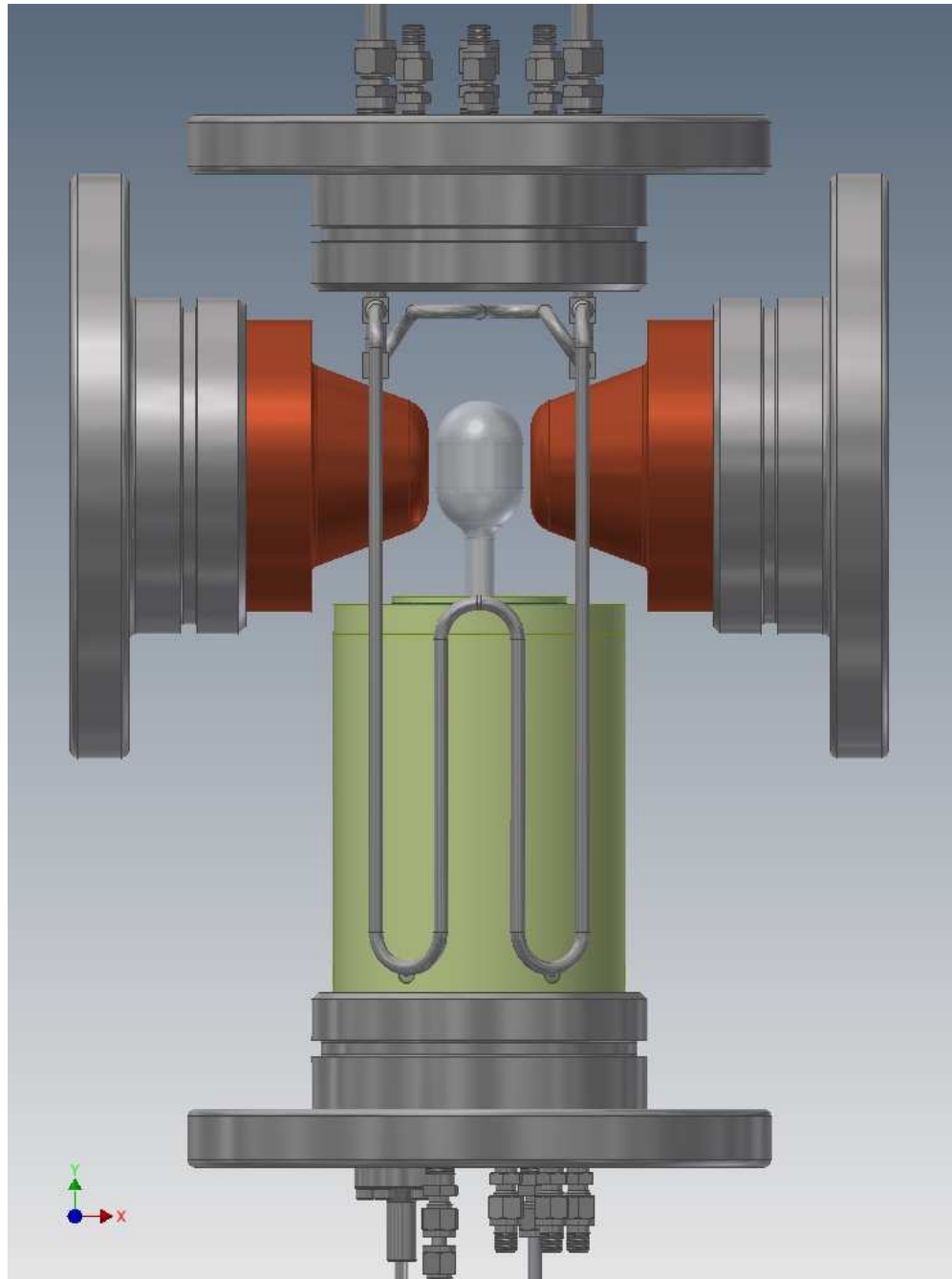


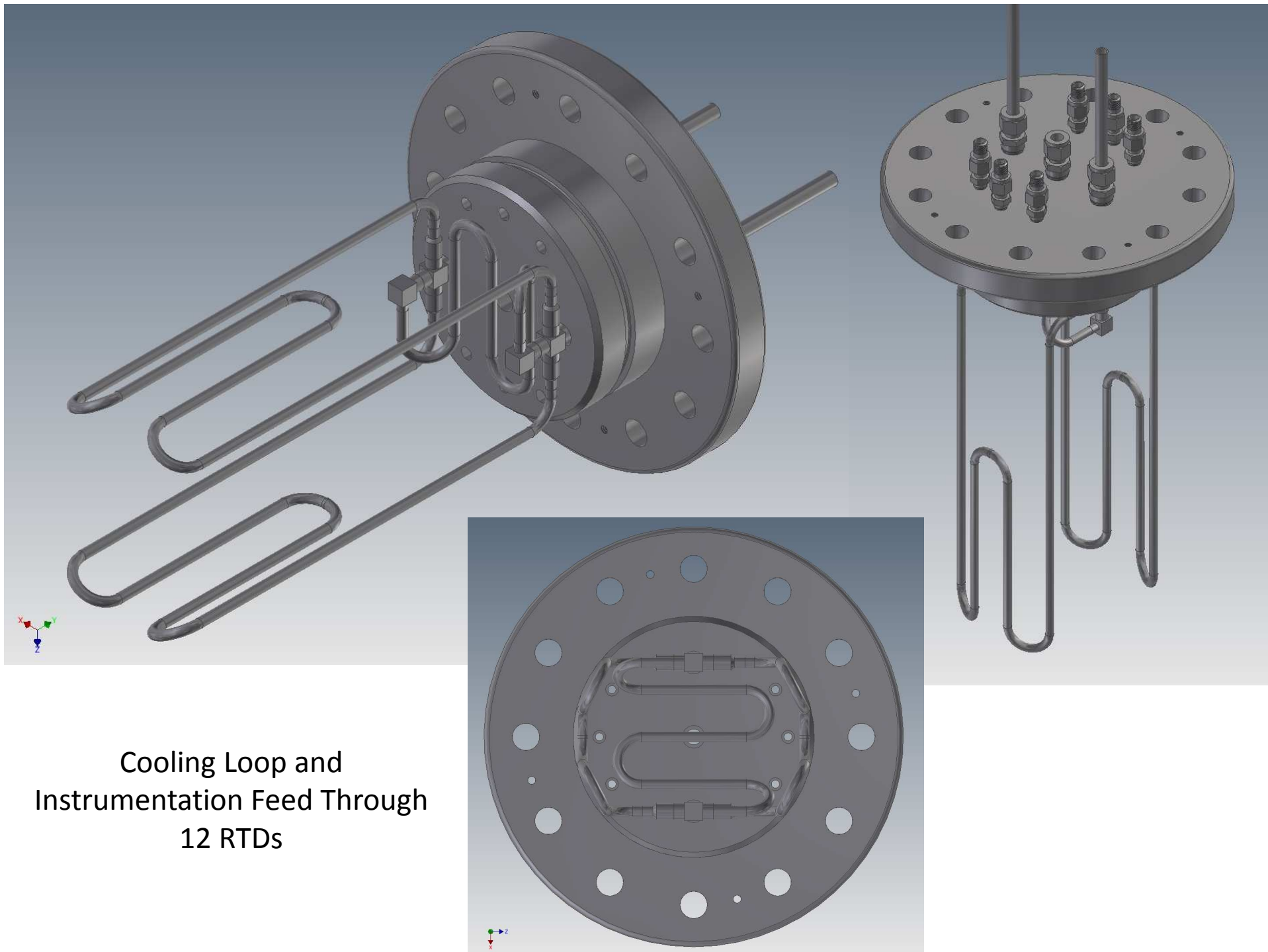
Tungsten-Iron-Nickel alloy (HeavyMet), Silver, Copper

8MeV BremCone and 1cm Cut-Off

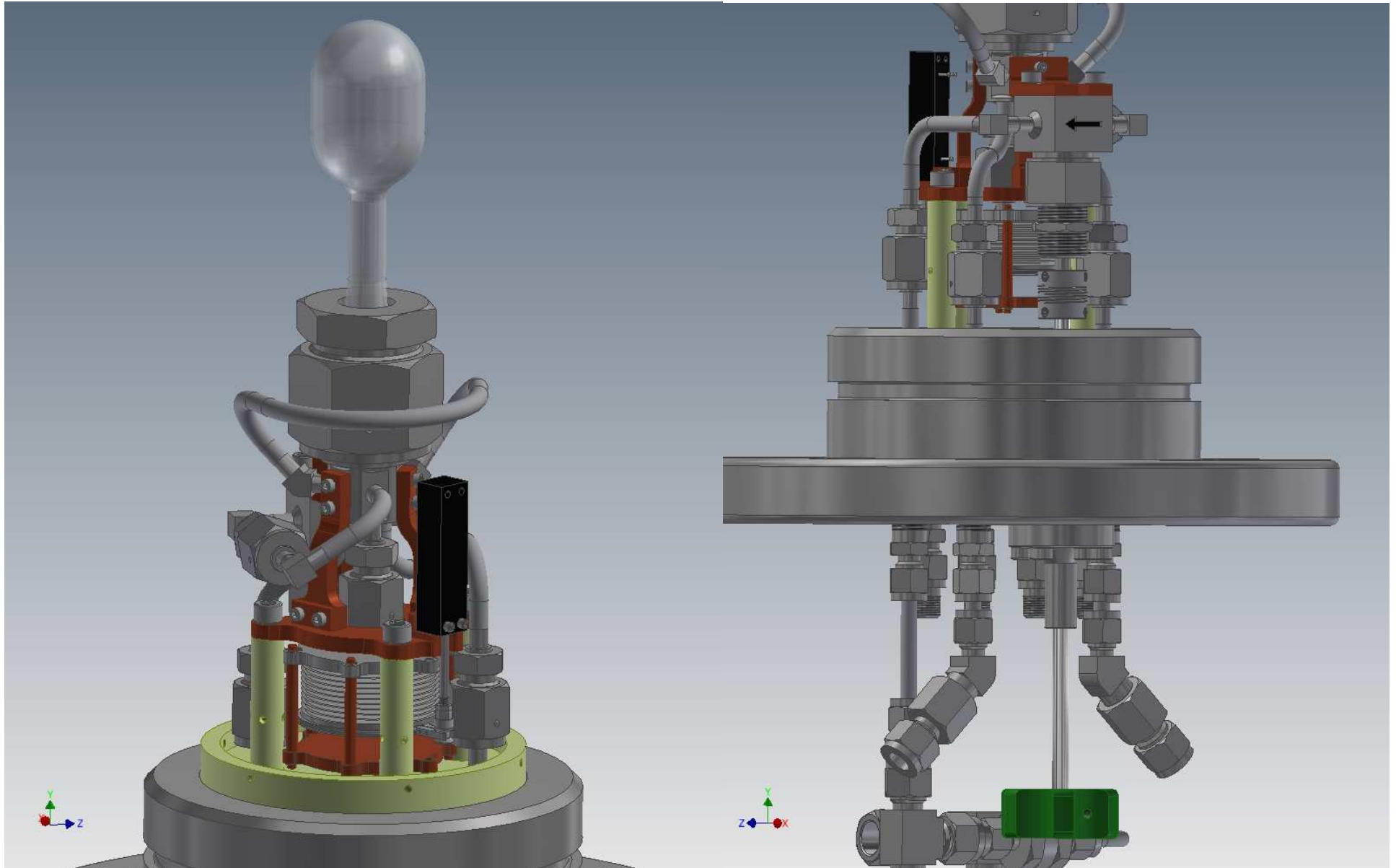


Hydraulic Oil Cooling Loop – CNC Tube Bending, Micro Weld Fittings

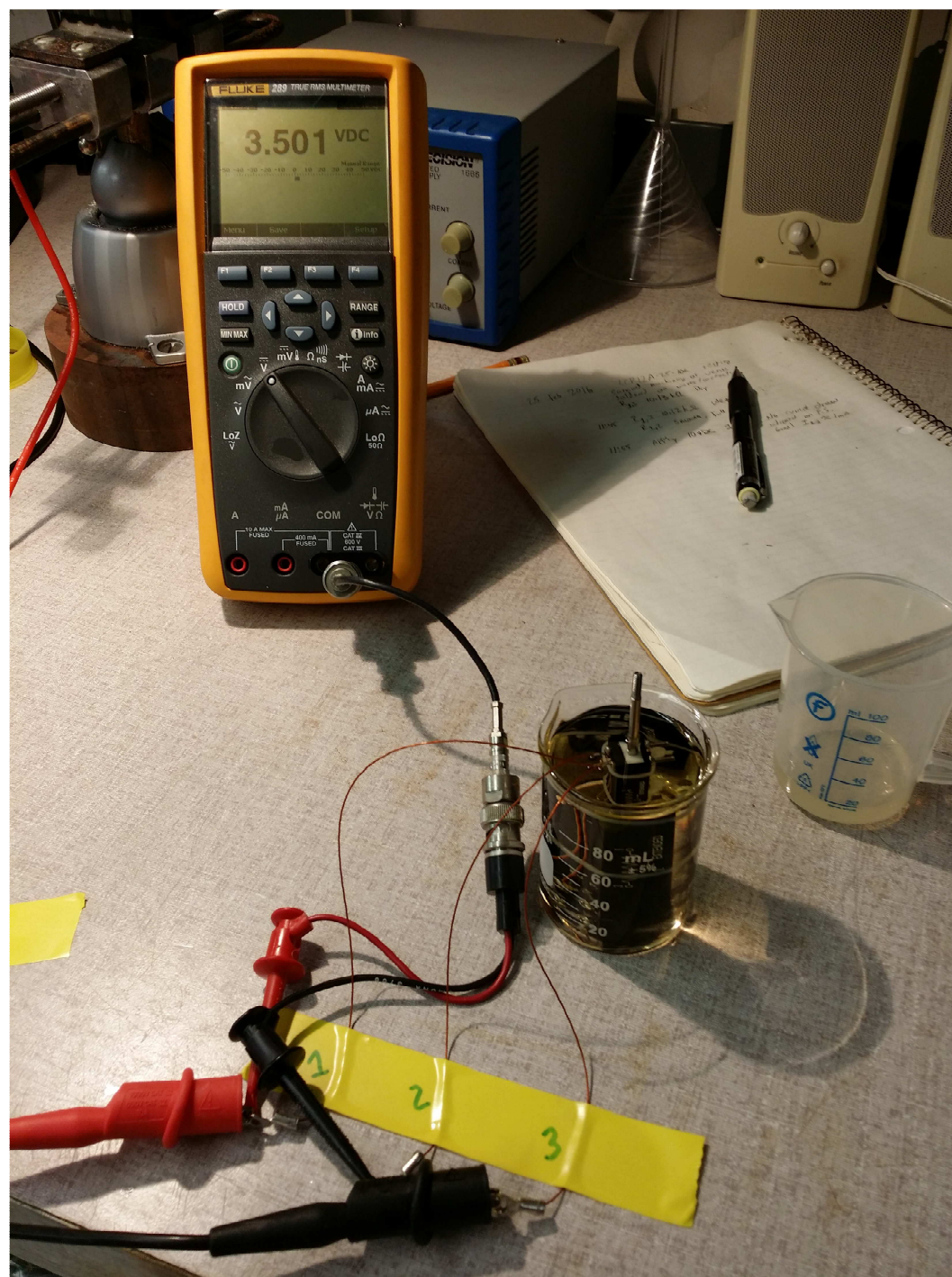




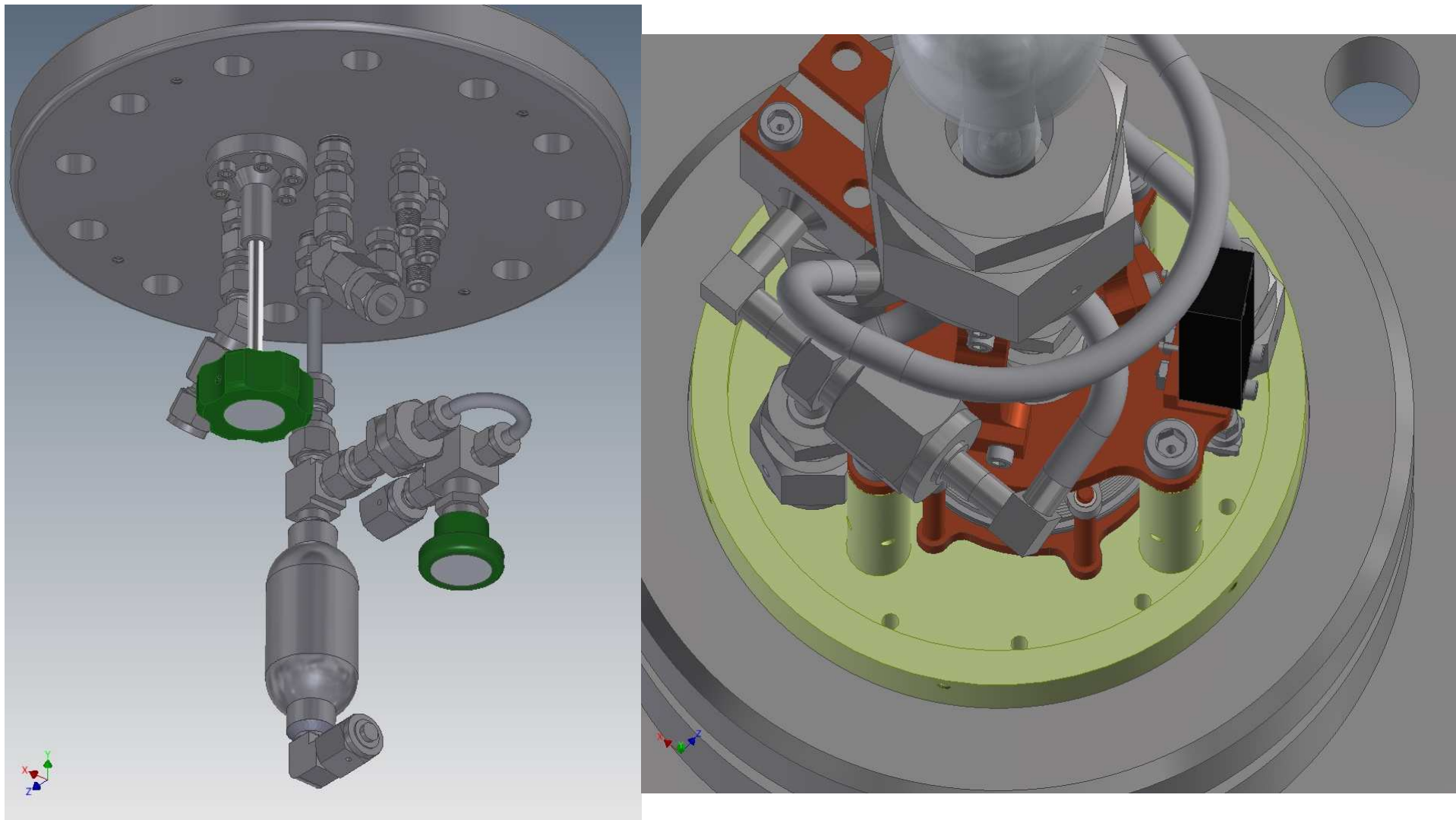
Linear Pot Prep and Test OK



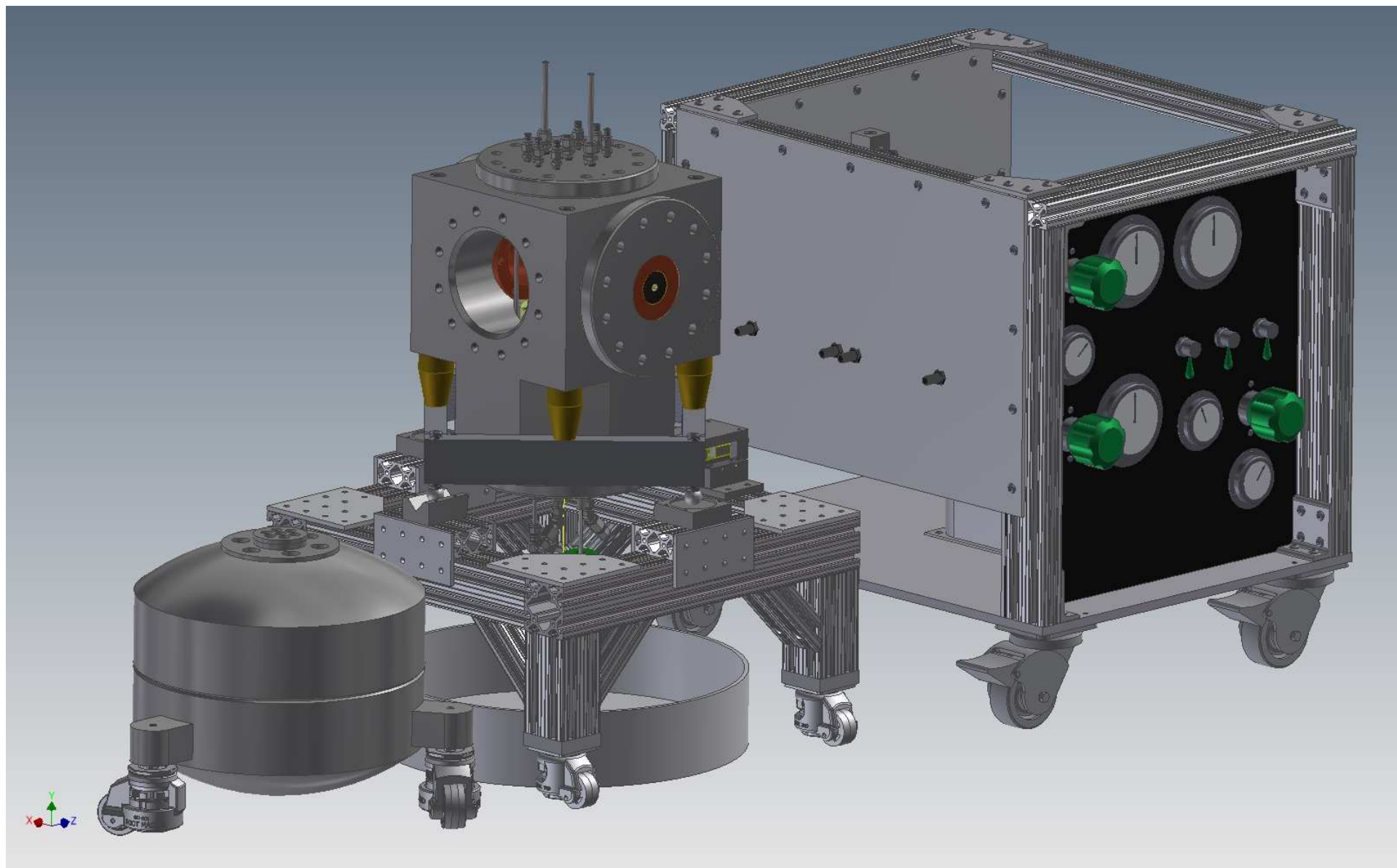
2nd Valve “Bonnet” in Lower Flange

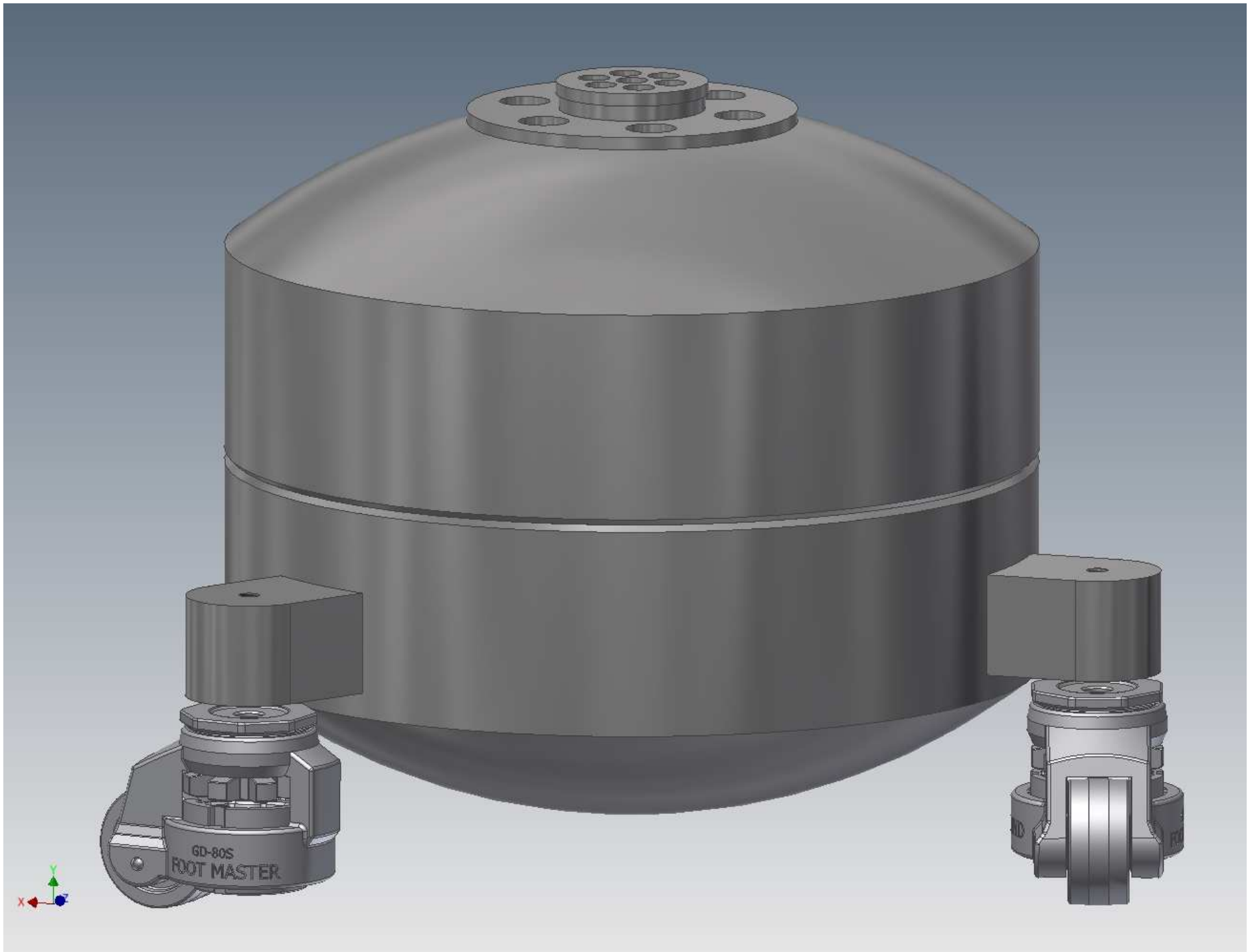


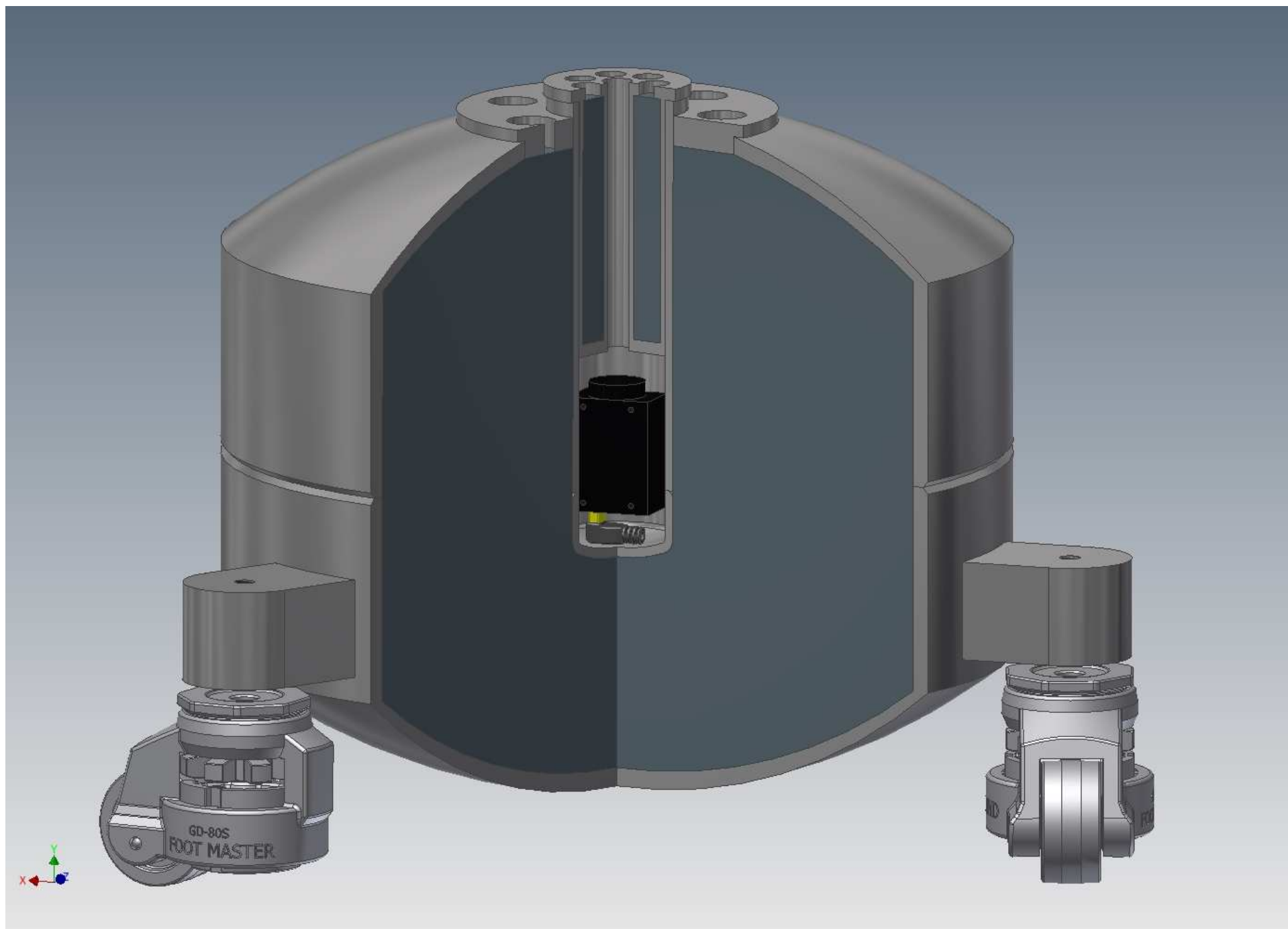
Instrumentation Feedthroughs

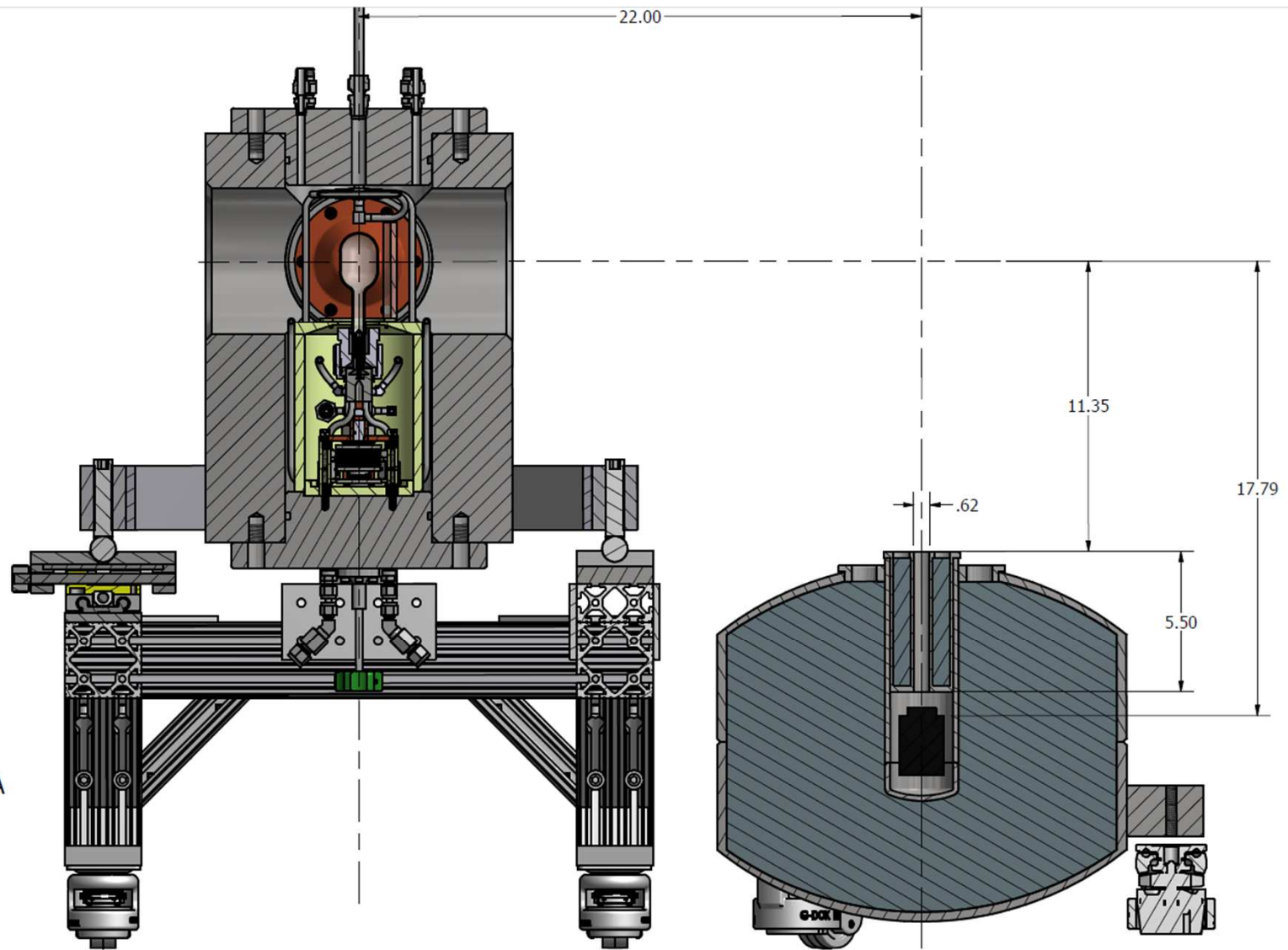


Linear Pot and 6 RTDs









SECTION A-A
SCALE 1/4