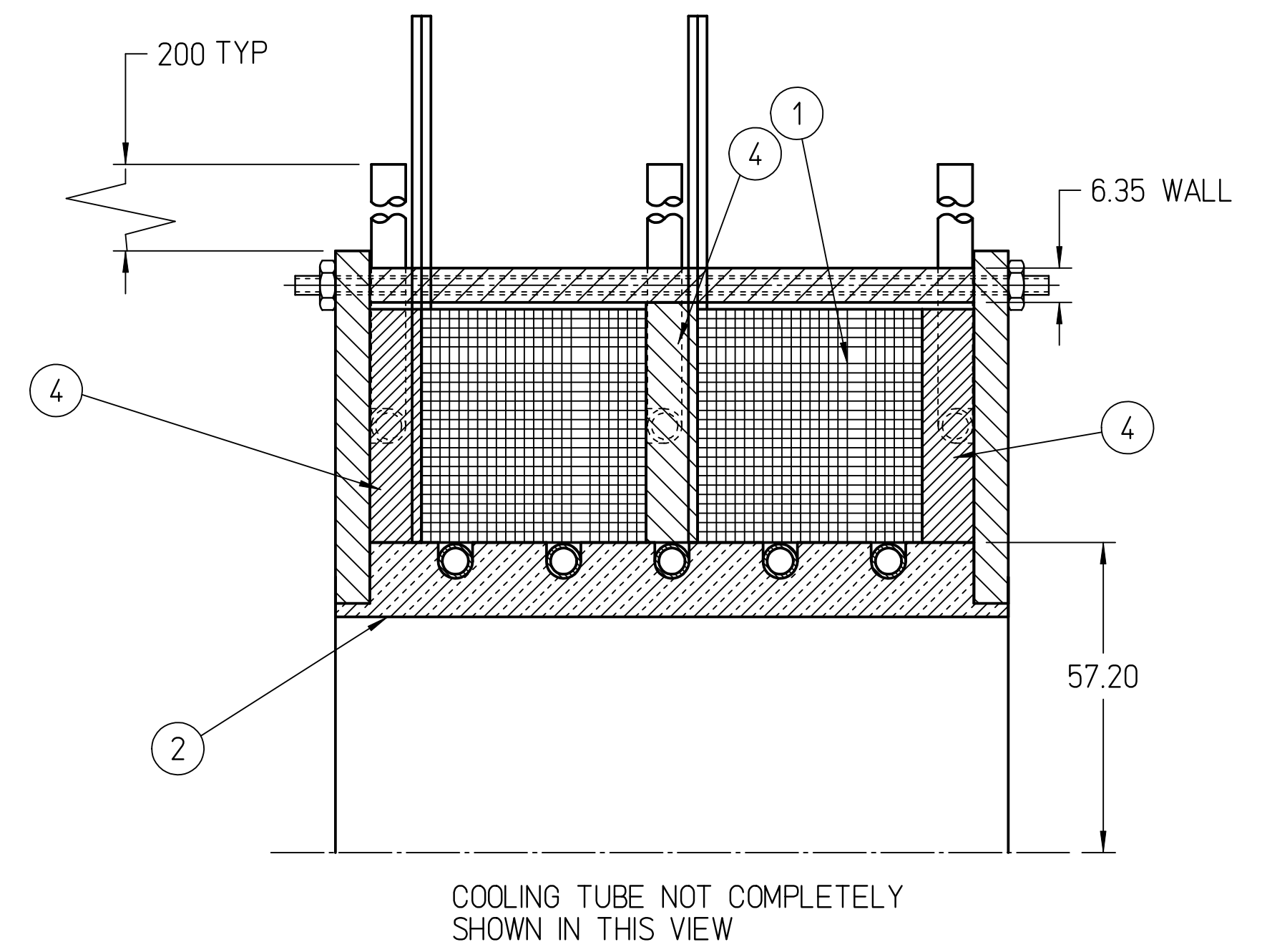
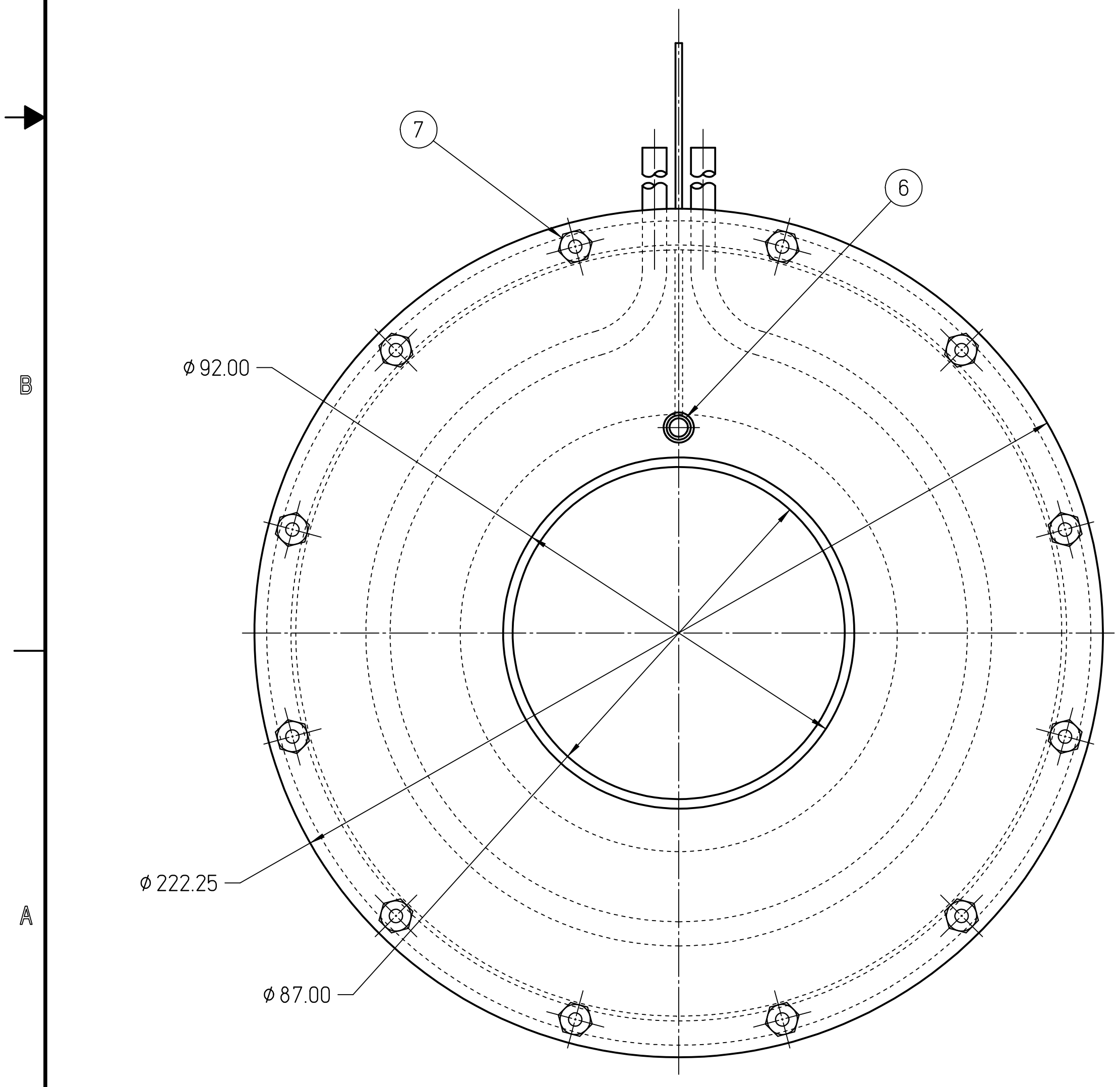
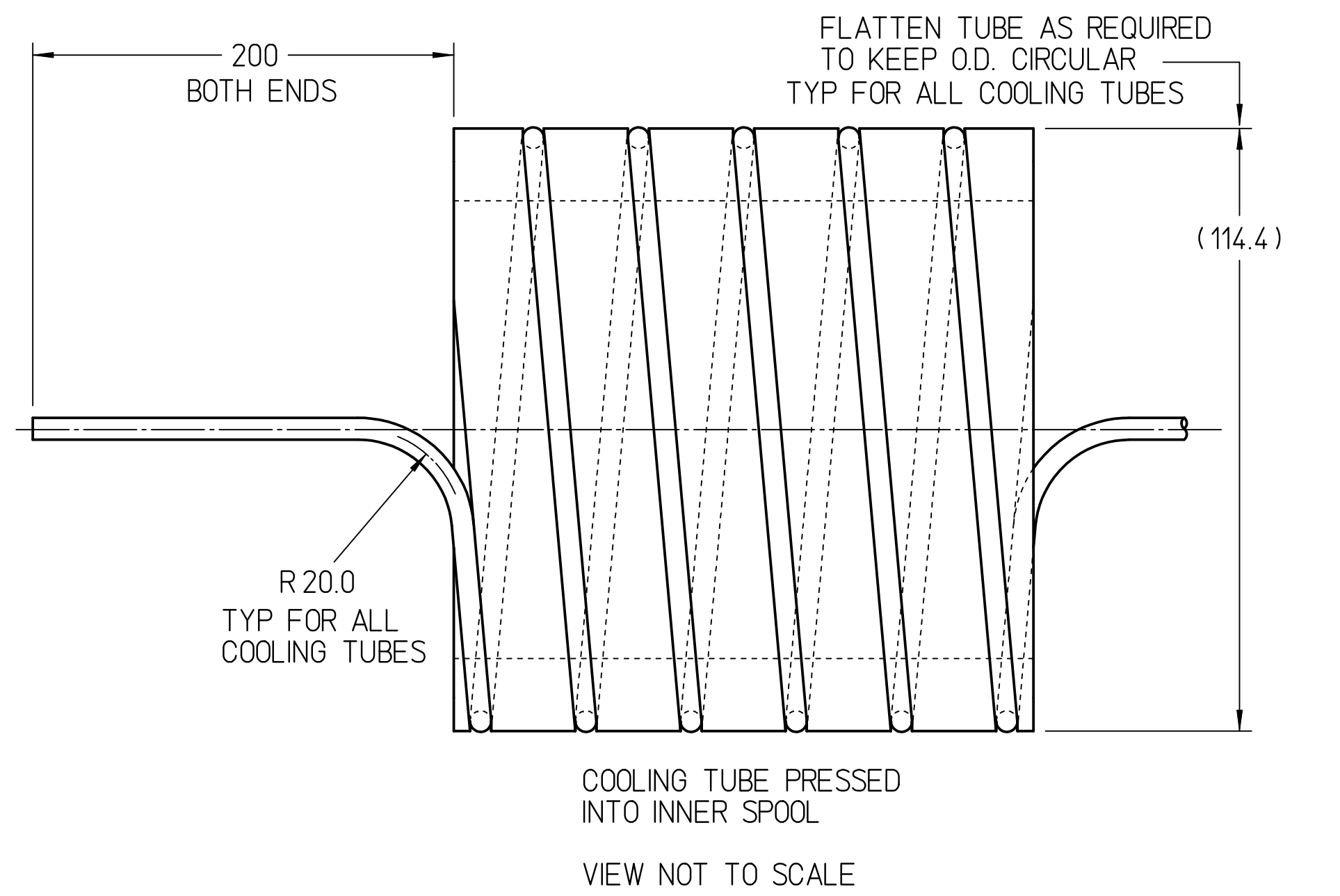
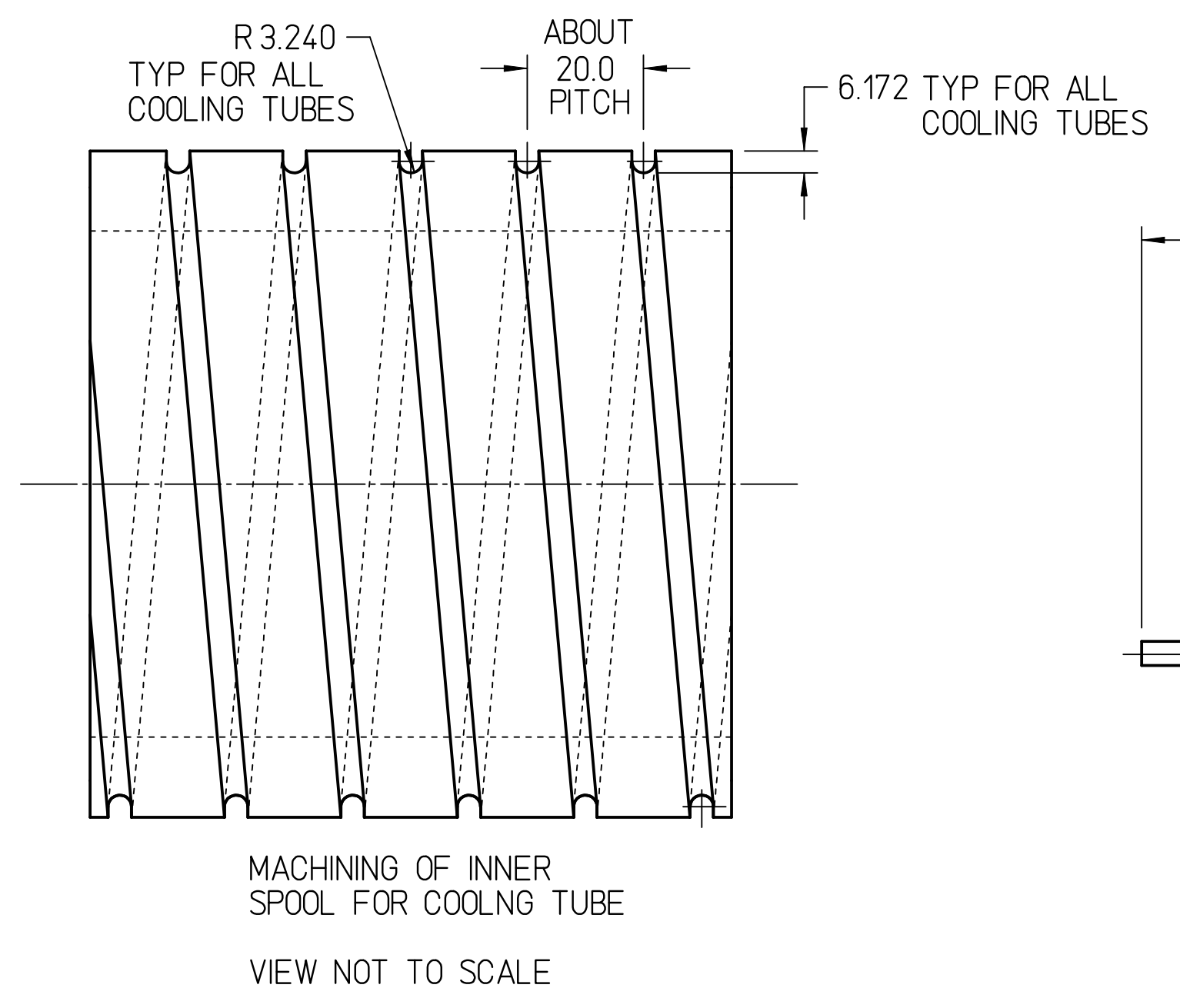
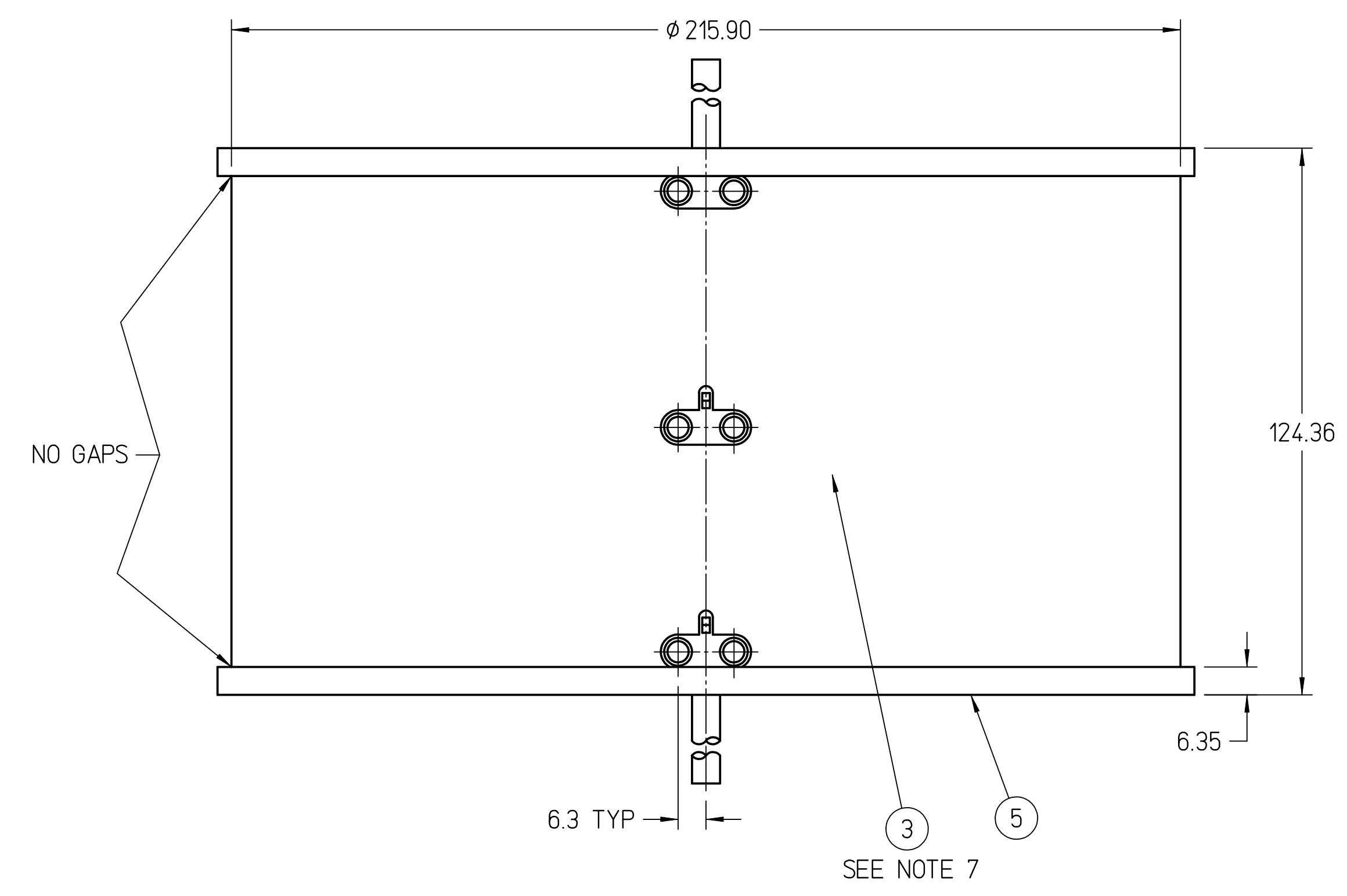


REVISION HISTORY				
ZONE	REV	DESCRIPTION	DATE	APPROVED



NOTES

- SEE SPECIFICATION MEG0002019-S002 FOR MANUFACTURING AND DESIGN PARAMETERS OF COIL AND SOLENOID ASSEMBLY.
- ESTIMATED WEIGHT = 72 LBS.
- THERE SHALL BE SLIGHT CLEARANCE FITS BETWEEN THE OUTSIDE DIAMETERS OF THE INNER SPOOL AND THE INSIDE DIAMETERS OF ALL THE MATING PARTS.
- ALL DIAMETERS OF THE INNER SPOOL AND THE END PLATES SHALL BE CONCENTRIC FOR FIDUCIALIZATION PURPOSES OF THE ASSEMBLY.
- STEEL FOR END PLATES SHALL COME FROM THE SAME STOCK TO MINIMIZE VARIATION IN MATERIAL THICKNESS.
- COPPER FOR ANNULI SHALL COME FROM THE SAME STOCK TO MINIMIZE VARIATION IN MATERIAL THICKNESS.
- OUTER SPOOL (ITEM 3) SHALL BE MACHINED TO LENGTH TO EQUAL THE MEASURED THICKNESS OF THE COILS (ITEM 1) AND THE COPPER ANNULI (ITEM 4).

QTY REQD	ITEM NO.	PART OR IDENTIFYING NO.	NOMENCLATURE OR DESCRIPTION	MATERIAL SPECIFICATION	NOTES
12 SETS	7		#6 THREADED ROD, WASHERS AND NUTS	STEEL	
A/R	6		COOLING TUBE, 1/4" O.D. X .03" WALL	COPPER	
2	5		END PLATE	STEEL	
3	4		COPPER ANNULUS	9.52mm THK COPPER	
1	3		OUTER SPOOL	STEEL	
1	2		INNER SPOOL	COPPER	
2	1	SKETCH 1	COIL	COPPER	

DOCUMENT CONTROL STAMP	DIM & TOL PER ASME Y14.5 UNLESS OTHERWISE SPECIFIED DIMENSIONS ARE IN MILLIMETERS TOLERANCES ARE: FRACTIONS DECIMAL ANGLES XXX ± .25 XXX ± .125	TRACKING NO. N/A	U.S. Department of Energy Office of Science	Jefferson Lab Operated by Jefferson Science Associates, LLC
MATERIAL AS NOTED	THIRD ANGLE PROJECTION	APPROVALS	DATE 15MAY19	CEBAF INJECTOR 200 KeV GUN INJECTOR SOLENOIDS HIGH MOMENTUM BEAMLINE
FINISH MACHINED SURFACES UNLESS OTHERWISE NOTED DEBURR & BREAK ALL SHARP EDGES		DRAWN D. MACHE	CHECKED	
DO NOT SCALE DRAWING		APPROVED	APPROVED	
		SCALE 1:1	USED ON ASSY NO. N/A	SIZE DWG. NO. SKETCH NO. 4
			SHEET 1 OF 1	REV. -