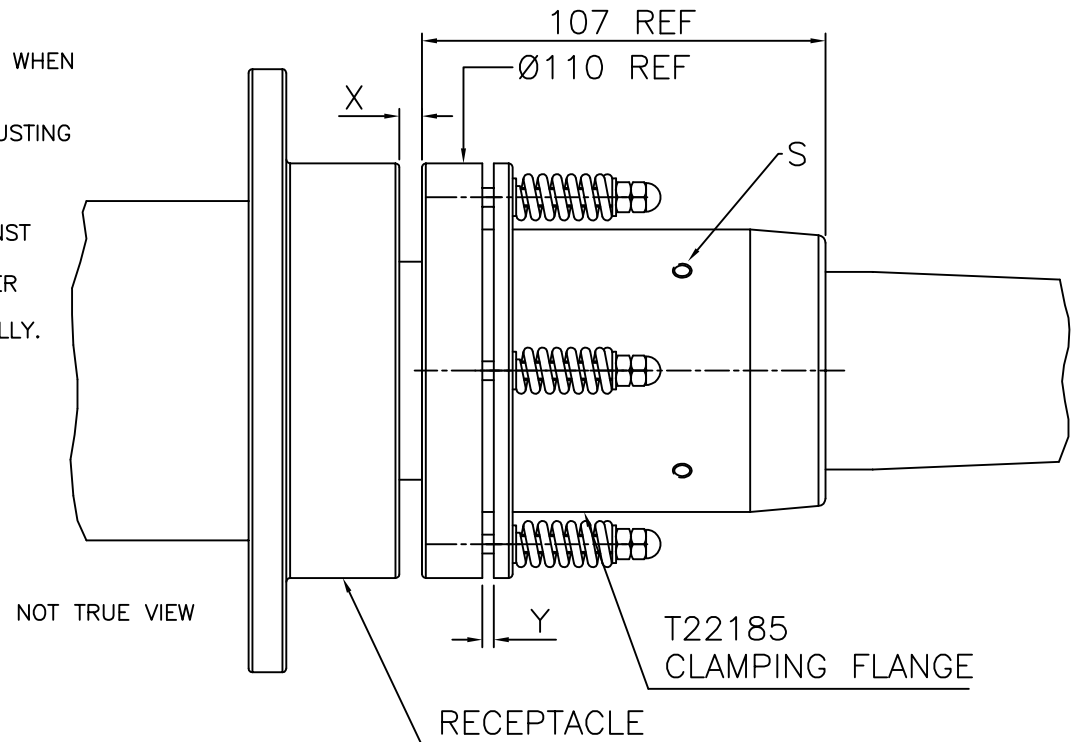
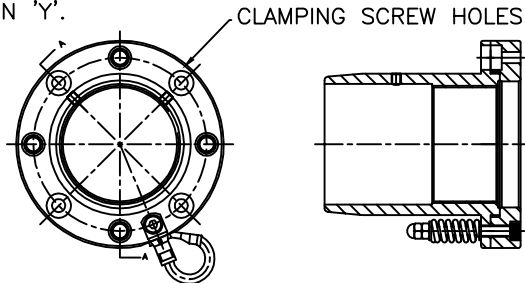


ADJUST BY ROTATING THE CLAMPING FLANGE SO THAT DIMENSION 'X' IS 9mm WHEN THE TERMINATION HAS BEEN FULLY INSERTED INTO THE RECEPTACLE AND IS AXIALLY IN LINE WITH THE RECEPTACLE.  
 ENSURE THE CABLE IS SUPPORTED AT ALL TIMES BUT ESPECIALLY WHILE ADJUSTING THE FLANGE. ADJUST BY ROTATING THE ORIENTATION OF CLAMPING FLANGE TO ALIGN WITH THE MATING HOLE POSITIONS IN THE RECEPTACLE.  
 NOTE: ALWAYS ADJUST SO AS TO INCREASE DIMENSION 'X'.  
 LOCK CLAMPING FLANGE BY TIGHTENING THE FLANGE GRUB SCREWS (S) AGAINST THE FERRULE.  
 REMOVE THE TERMINATION AND GREASE THE TAPERED SECTION OF THE RUBBER TERMINATION WITH HIGH VOLTAGE GREASE.  
 REPLACE IN RECEPTACLE AND TIGHTEN DOWN CLAMPING SCREWS 4 OFF EQUALLY.

AS THE FLANGE IS TIGHTENED DOWN GAP 'Y' WILL OPEN.  
 CHECK GAP 'Y' IS NOT LESS THAN 3mm IF LESS THAN 3mm RE-ADJUST.

CAUTION:  
 IT IS IMPORTANT TO CHECK DIMENSION 'Y' AFTER APPROX. 1 WEEK.  
 INSPECT AND ADJUST AS ABOVE IF 'Y' IS LESS THAN 1mm  
 ENSURE CABLE IS AXIALLY IN LINE WITH THE RECEPTACLE WHEN MEASURING DIMENSION 'Y'.



THREAD M62x1.5mm PITCH ISO  
 4 HOLES Ø7.0 THROUGH EQUISPACED ON 92.00 PCD  
 TO SUIT M6 CAP HEAD FIXINGS  
 FOR FULL DETAILS SEE T22185

ALWAYS REFER TO EQUIPMENT MANUFACTURES SERVICE MANUALS FOR SERVICE/INSPECTION INTERVALS

TECHNICAL DATA:	ACCESSORIES:	INSTALLATION:
<p>ONLY ESSEX X-RAY APPROVED RECEPTACLES SHOULD BE USED.</p> <p>FOR FULL CABLE DATA SEE ESSEX CABLE DATA SHEET</p>	<p>INSTALLATION GREASE P00075</p>	<p>WARNING:            CABLE SHOULD ONLY BE FITTED BY A TRAINED PERSON.            CABLE CAN RETAIN ELECTRICAL CHARGE.            DISCHARGE TO EARTH BEFORE HANDLING.            A SUITABLE HIGH VOLTAGE GREASE SHOULD BE APPLIED TO THE TERMINATION.            ENSURE THAT THE TERMINATION IS FULLY INSERTED IN THE SOCKET BEFORE ADJUSTING CLAMPING FLANGE.</p>

**ESSEX X-RAY & MEDICAL EQUIPMENT LTD.**

FLITCH INDUSTRIAL ESTATE, CHELMSFORD ROAD  
 GREAT DUNMOW, ESSEX CM6 1XJ ENGLAND

Telephone 01371 875661  
 Fax 01371 875665  
 Email sales@essex-x-ray.com

REVISIONS			DUE TO CONTINUING PRODUCT DEVELOPMENT ESSEX X-RAY RESERVES THE RIGHT TO MODIFY DATA WITHOUT NOTICE					© NOT TO BE REPRODUCED IN WHOLE OR PART WITHOUT PRIOR PERMISSION OF ESSEX X-RAY & MEDICAL EQUIPMENT LTD.	DRAWING No. DS1079
NO.	DATE	BY	DRAWN	APPROVED	DATE	ISSUE	SCALE		
			MGM		20.11.09	1	N.T.S.		
			TITLE FITTING INSTRUCTIONS FOR FLANGED TERMINATIONS 210KV (R30) LOW MAINTENANCE						