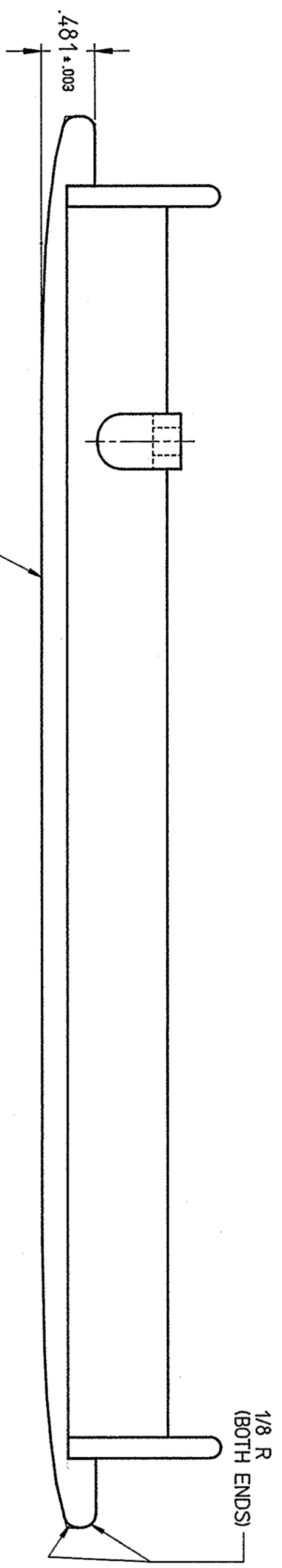
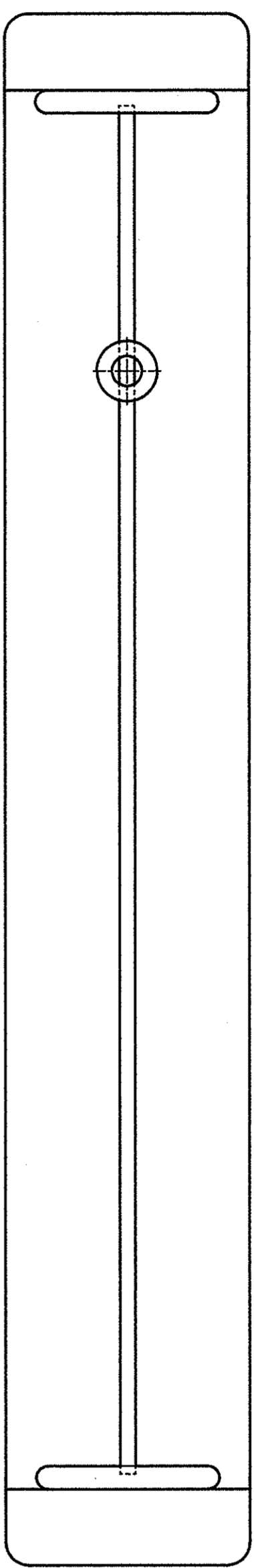
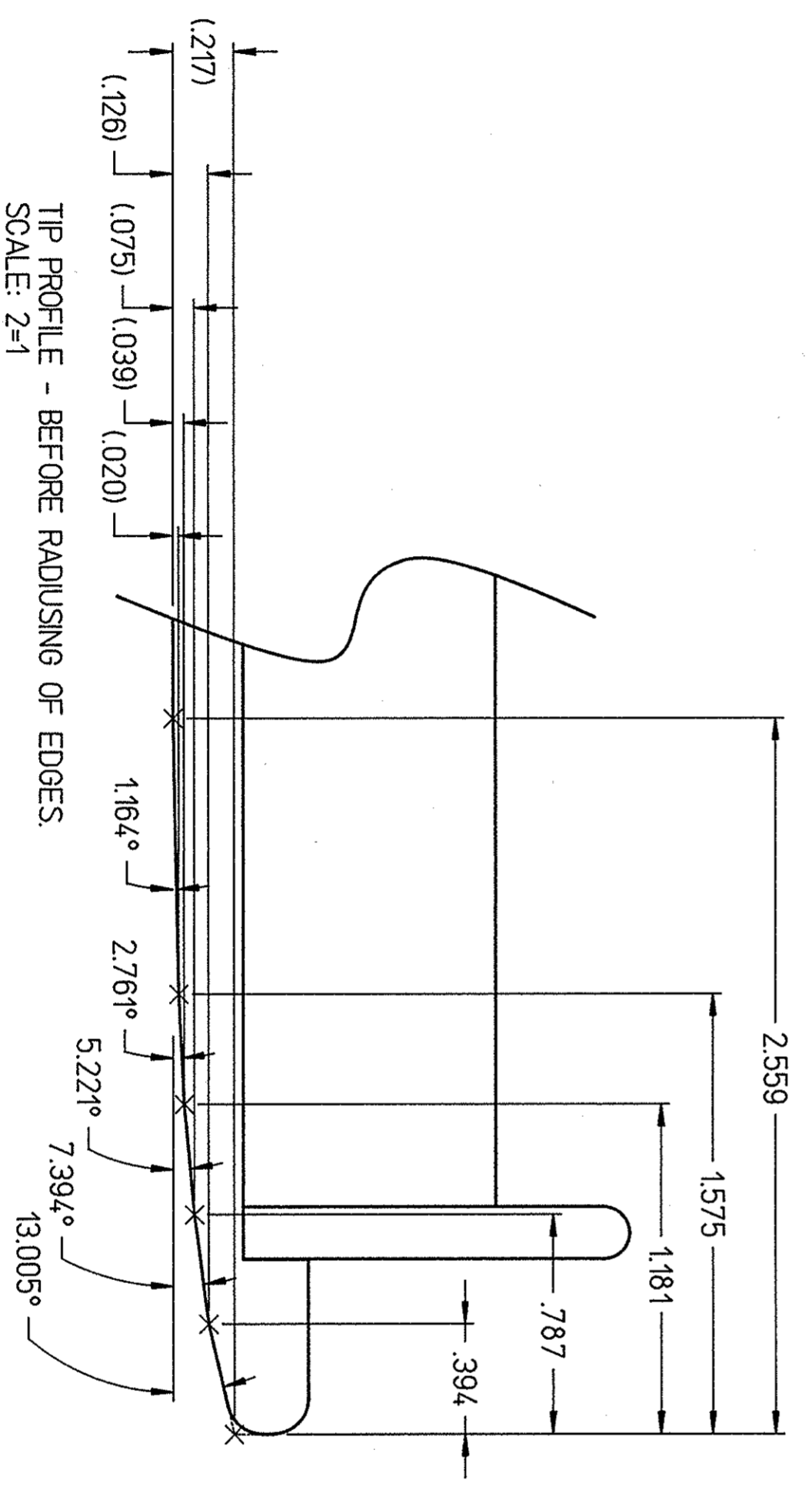
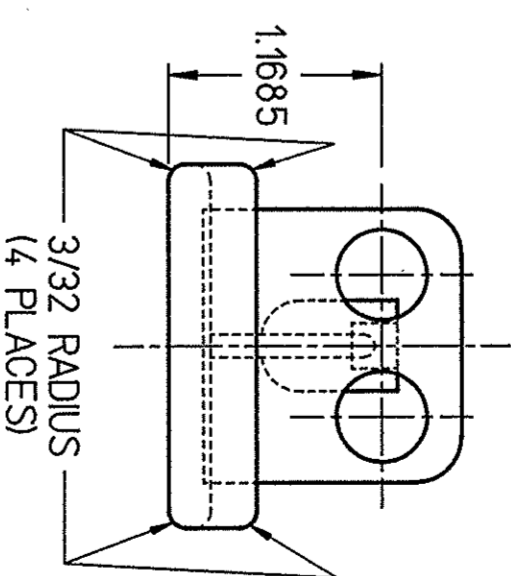


REV	DATE	DESCRIPTION	BY	APP'D
A	9/24/97	REVISED TIP PROFILE	<i>BR</i>	<i>OK</i>



FLY CUT ELECTRODE FACE ~.018 TO OBTAIN .481 TIP THICKNESS EACH END BEFORE MACHINING TIP PROFILE.



TIP PROFILE - BEFORE RADIUSING OF EDGES.
SCALE: 2=1

- NOTES:
1. MATERIAL: C-2893-18
 2. MACHINING OF PROFILE SHALL BE DONE AFTER MAPPING OF MAGNET COILS. DIMENSIONS MAY NEED TO BE ADJUSTED TO SUIT COILS.

GADD I.D. NO. 328930019		Thames Jefferson Nuclear Accelerator Facility UNIVERSITY OF ILLINOIS AT URBANA-CHAMPAIGN	
APPROVALS	DATE	DRAWN BY URIBE	
C L HUTTON	17MAR97	CHECKED BY	
D. MACHE	7/08/97	APPROVED BY	
B. DUNHAM	7/08/97	NUCLEAR PHYSICS LABORATORY UNIVERSITY OF ILLINOIS AT URBANA-CHAMPAIGN	
C.K. SINGHAR	7/08/97	UNLESS OTHERWISE SPECIFIED DIMENSIONS IN INCHES 2 PLACE DECIMALS BREAK SHARP CORNERS 3 PLACE DECIMALS FRACTIONAL 1/32 ANGULAR 30°±5'	
DRAWING NO. 32893-C-0019		ELECTRODE - TIP PROFILE	
SCALE C		PART NO. NO. RECD. 2	
SHEET 1 OF 1		SCALE 1=1	
REV. A		DATE 10-6-92	
FILE 15		DWG. NO. C-2893-19	

