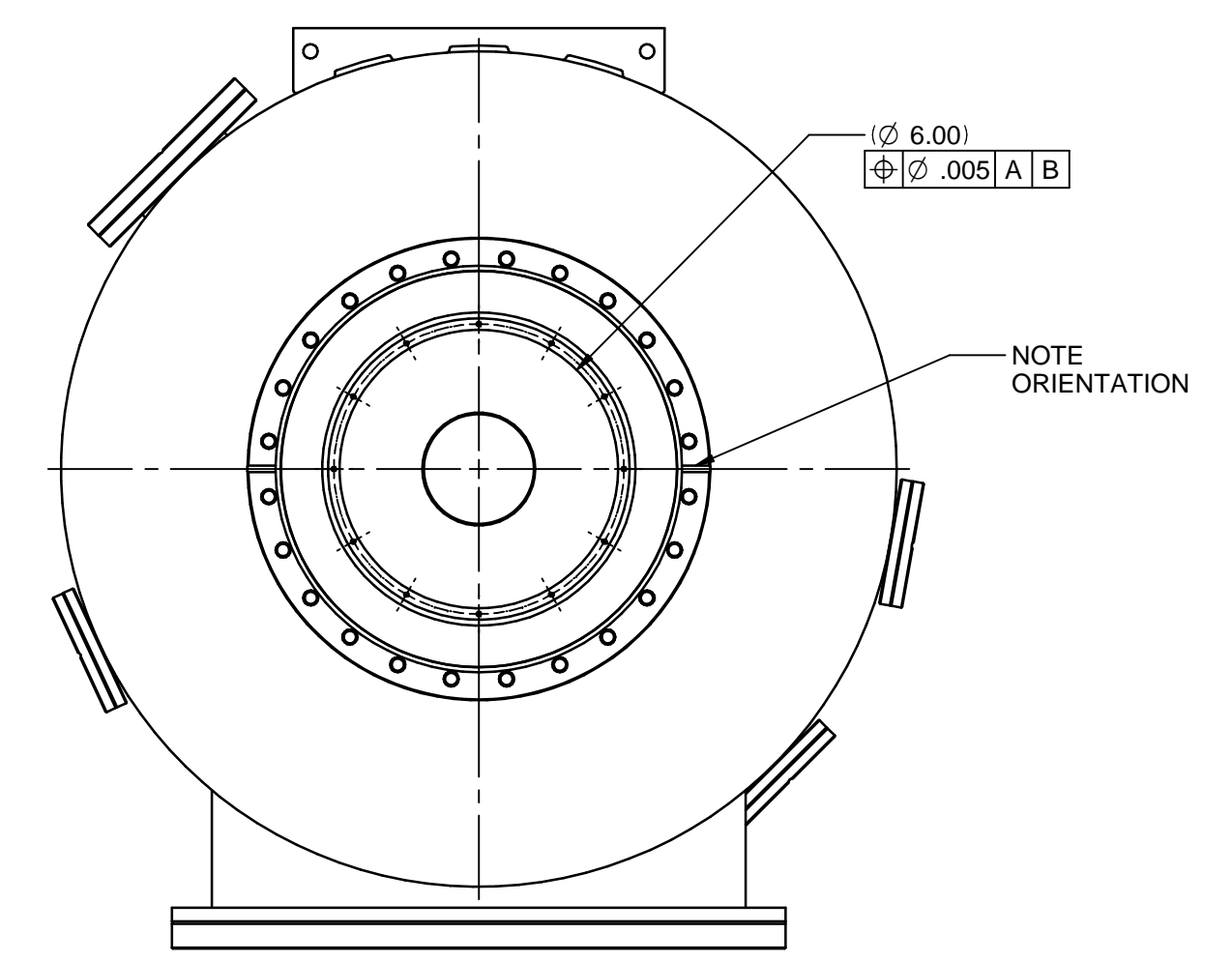
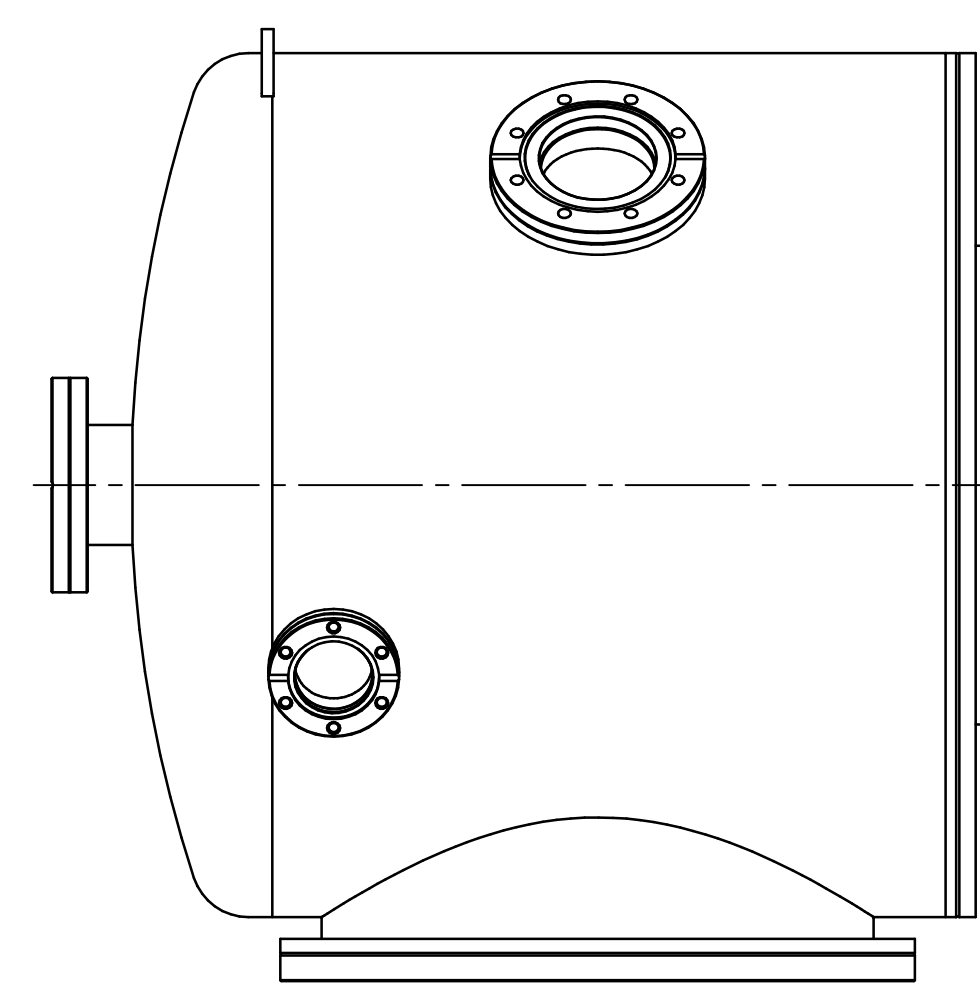
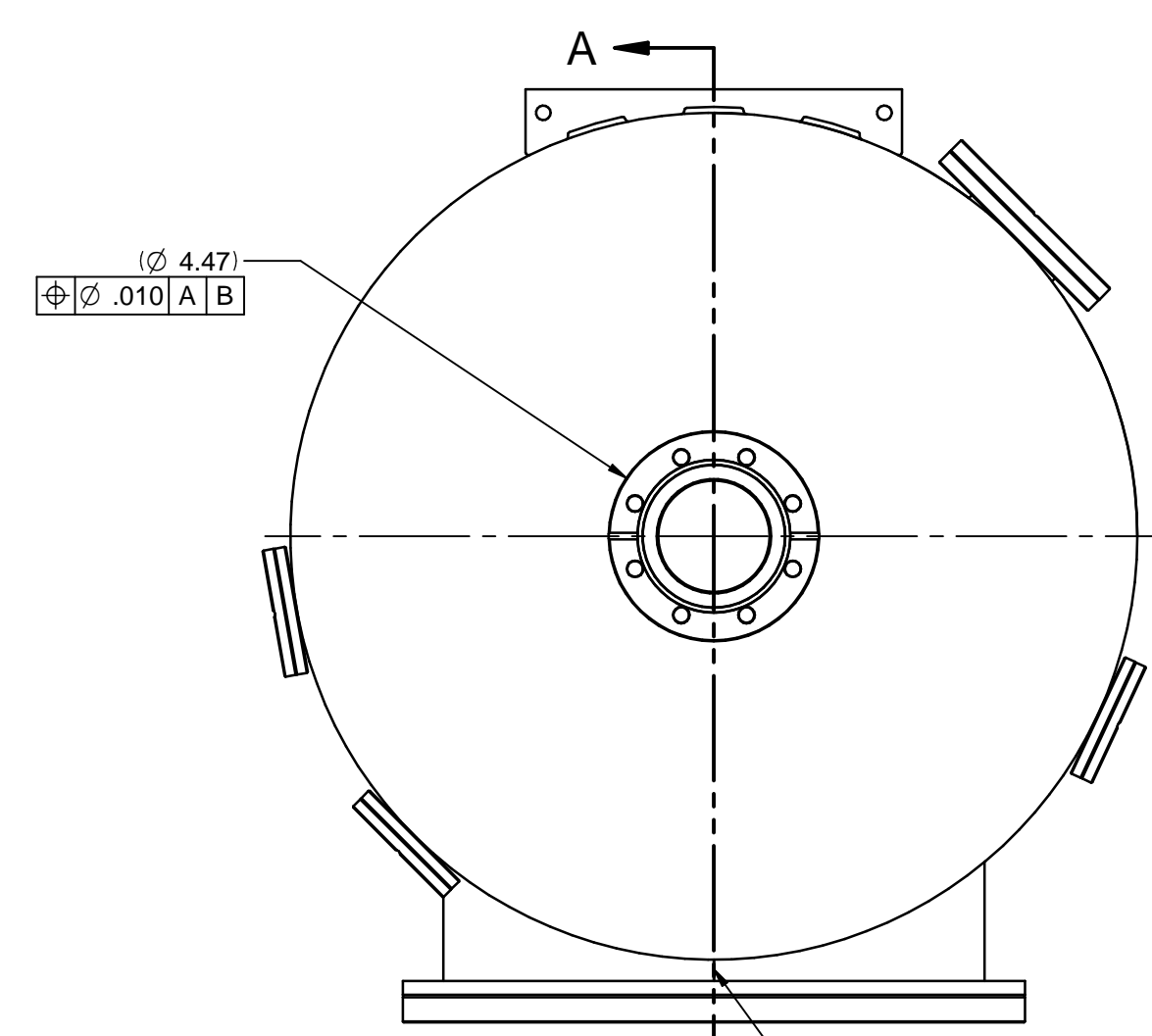
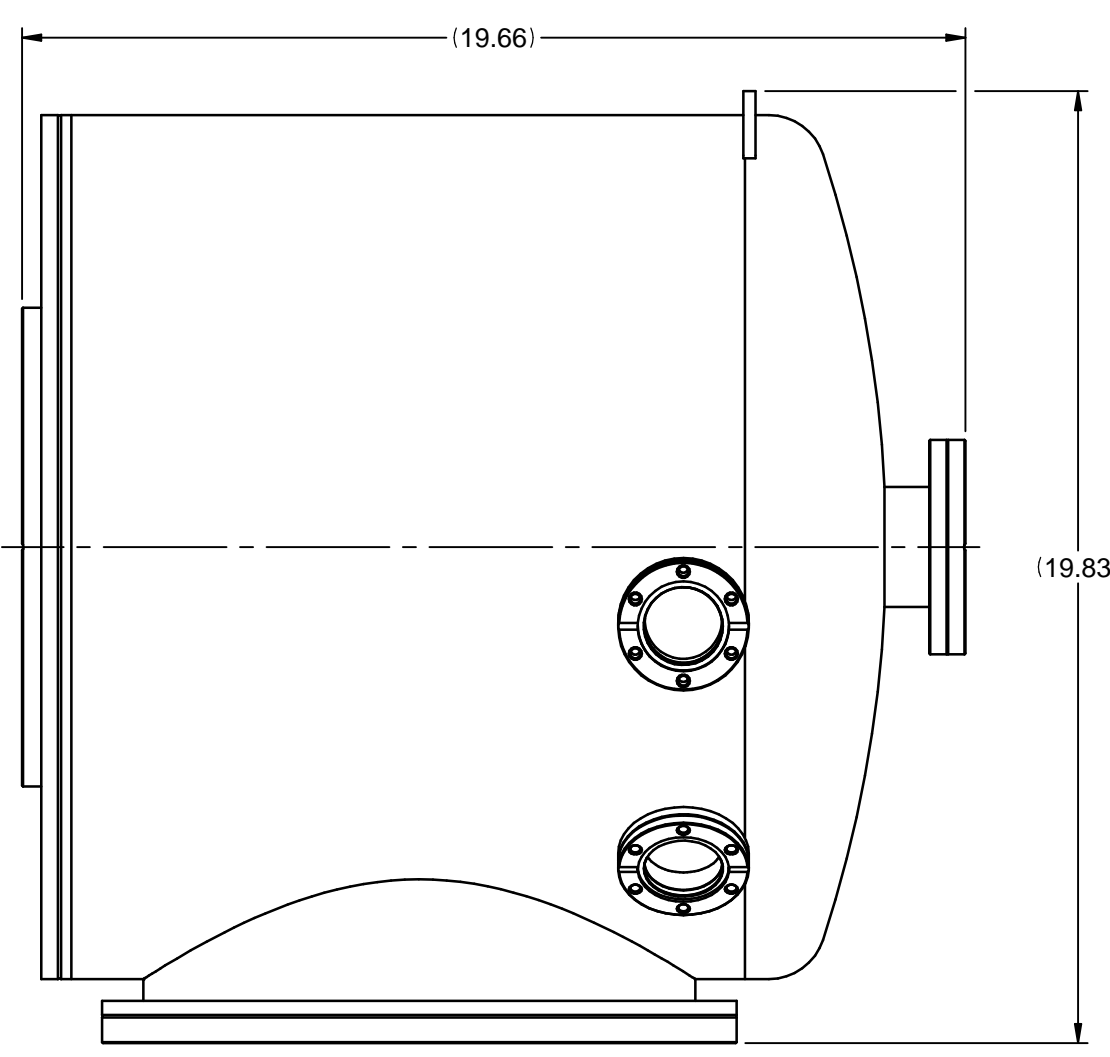
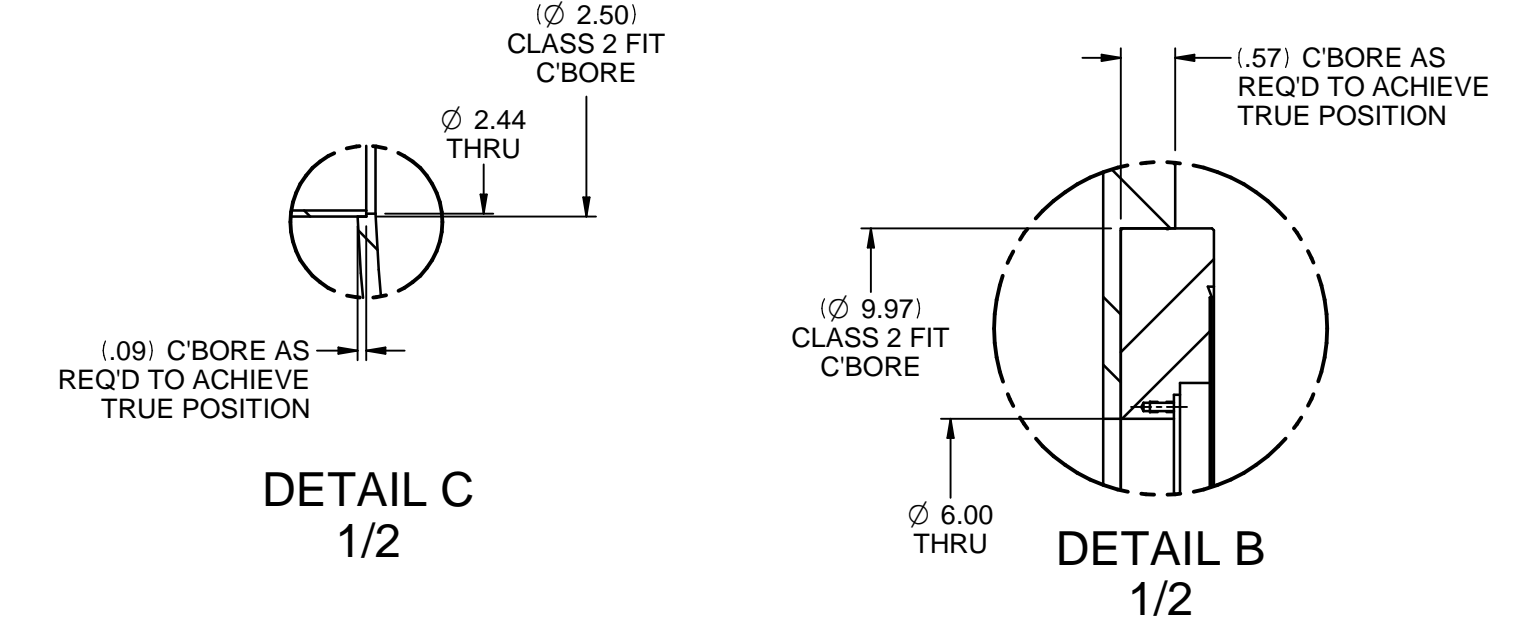
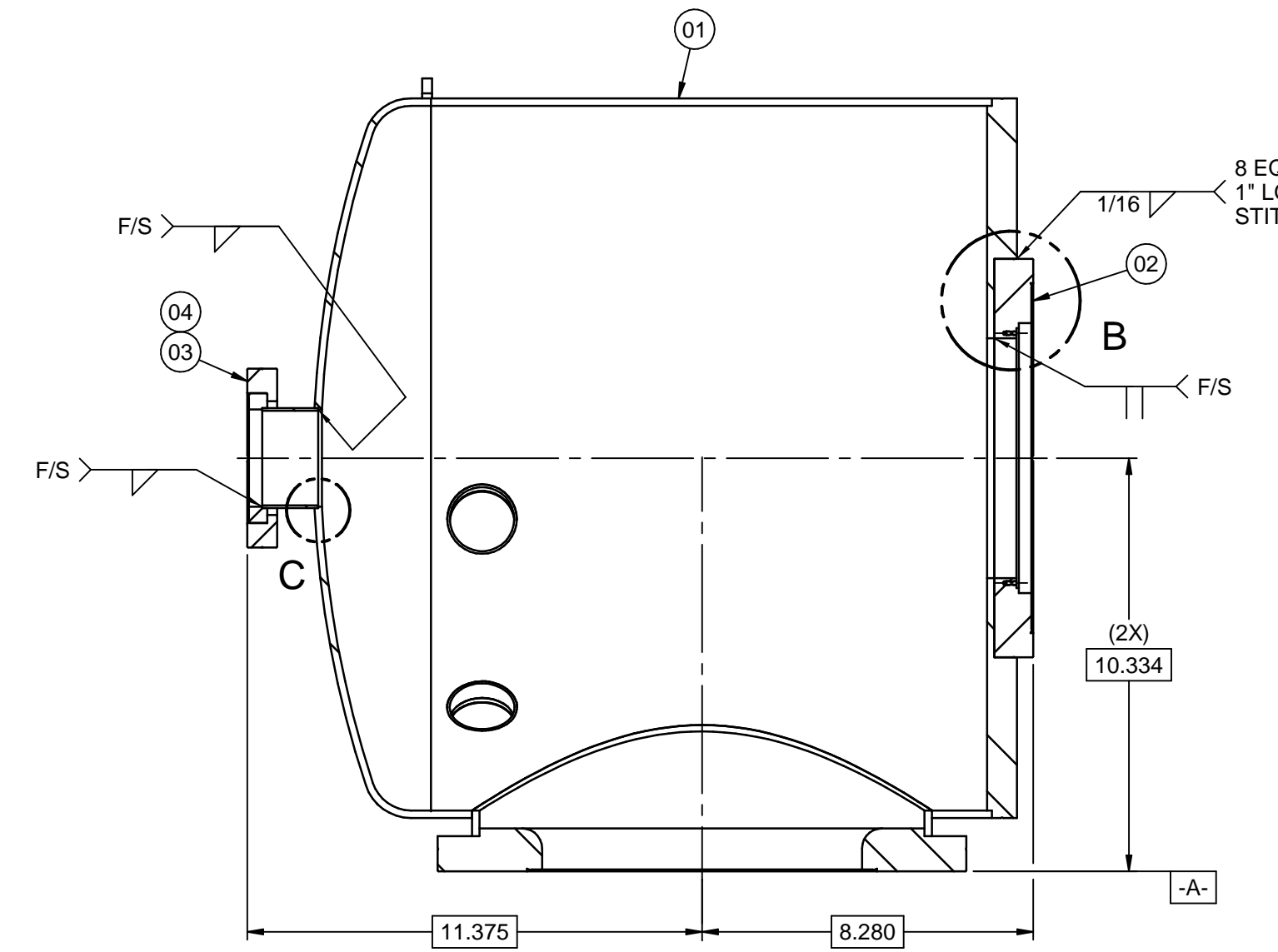
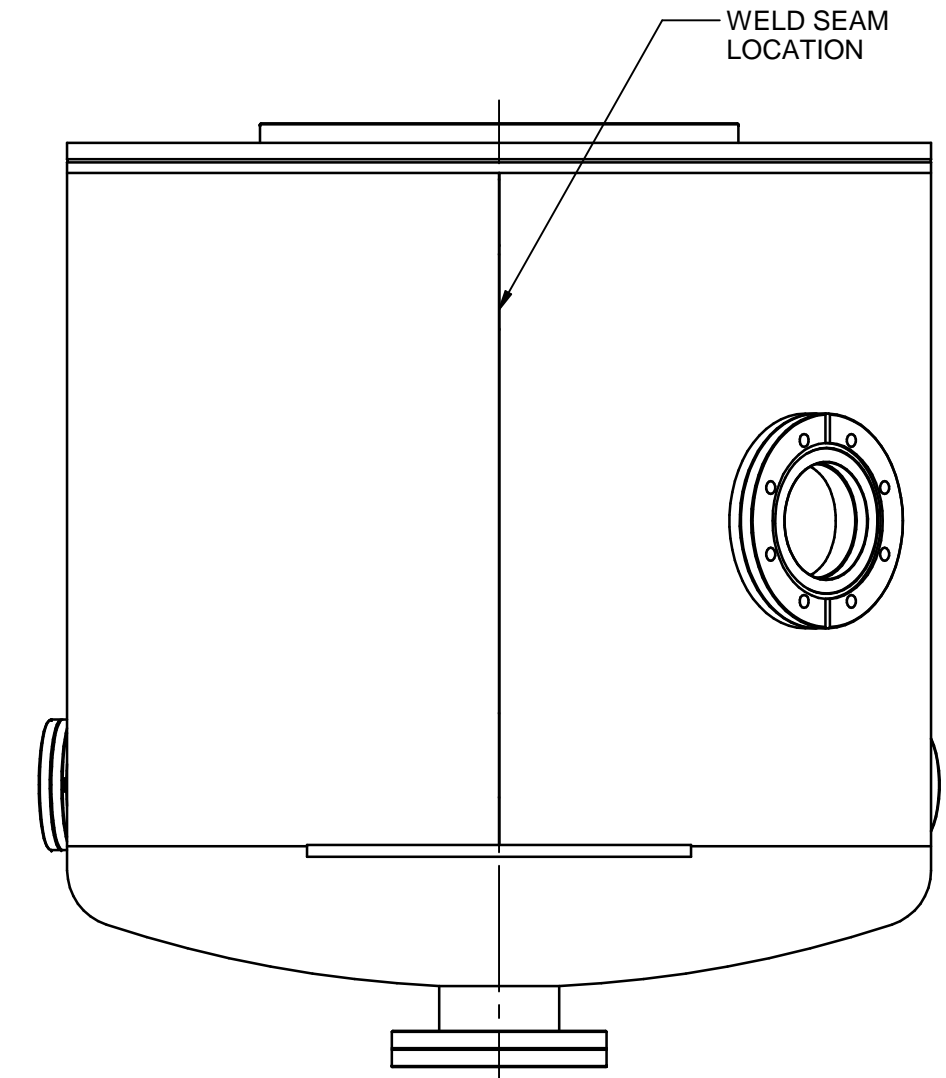
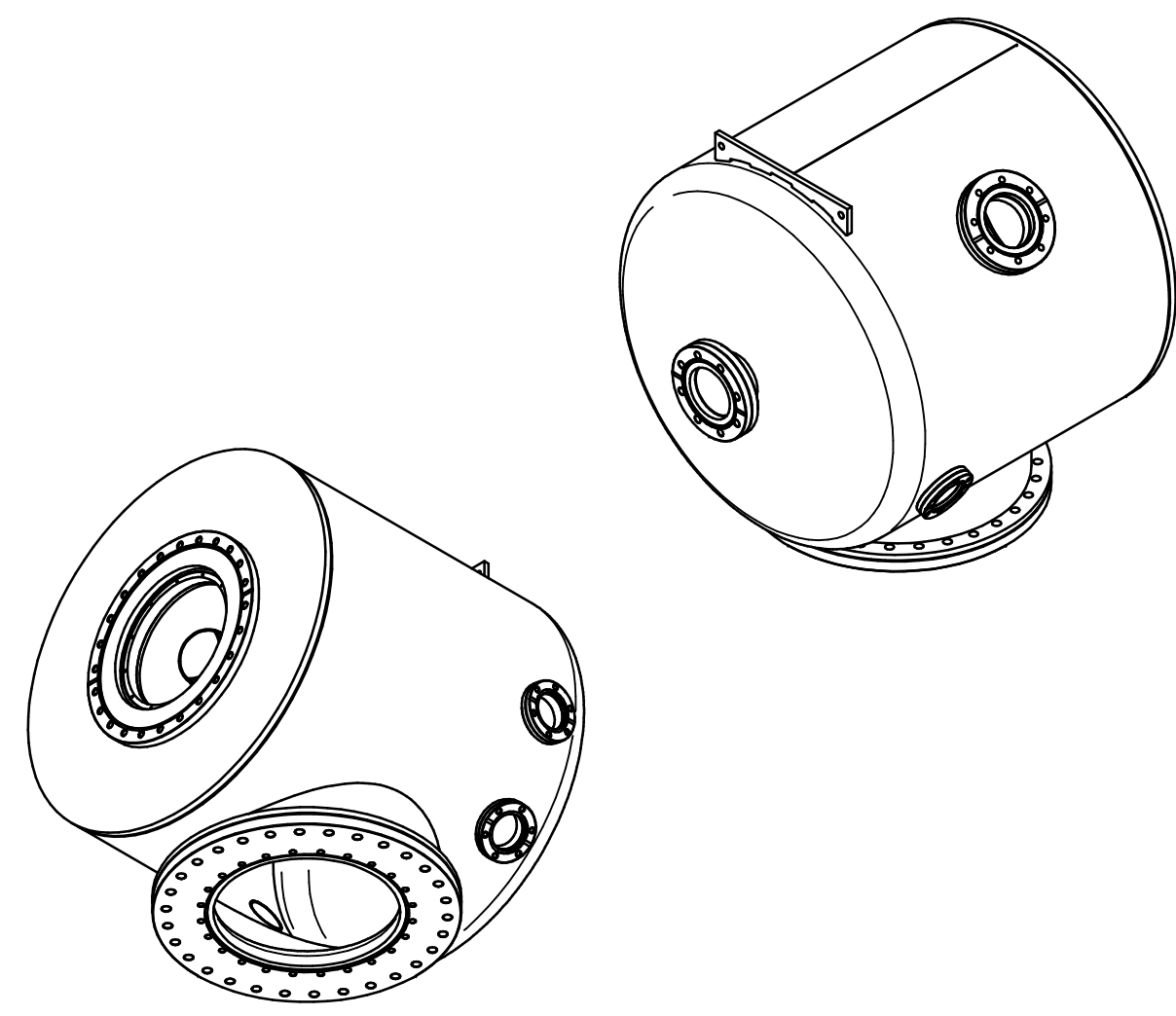


BOM62098 BJ1817C00039_RA_V1 5/12/2014 11:29

BILL OF MATERIALS					
NO.	PART NUMBER	DRAWING NUMBER	DESCRIPTION	QTY	UM
01	D-PRD118573-05S010	PRD118573-05S010	CHAMBER INITIAL DETAIL / WELDMENT FOR BJ1817C00039	1	EA
02	D-PRD118573-05S002	PRD118573-05S002	MODIFIED F1000X000NT FOR BJ1817C00039	1	EA
03	D-PRD118573-05S005	PRD118573-05S005	MODIFIED F0450X200R FOR BJ1817C00039	1	EA
04	SST-02501		TUBING, SS304L 2-1/2" OD, .065" WALL, ASTM A270 POLISHED OD & ID	1.53	IN

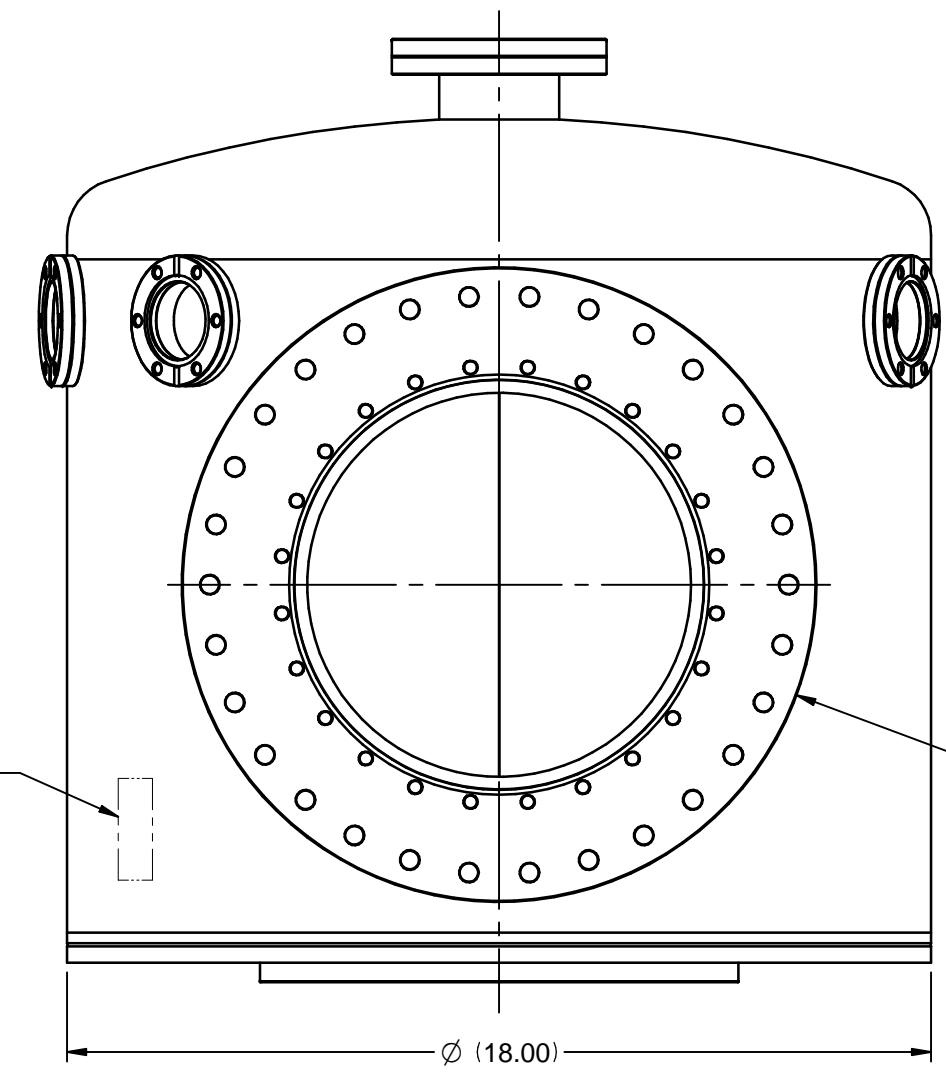


LEFT SIDE VIEW

FRONT VIEW

RIGHT SIDE VIEW

REAR VIEW



BOTTOM VIEW

- NOTES:
- ALL DIMENSIONS ARE IN INCHES, REFER TO TABLE 1 FOR STANDARD TOLERANCING INFORMATION.
 - ALL WELDS TO BE INTERNAL FULL FUSION VACUUM WELDS UNLESS OTHERWISE NOTED.
 - VACUUM WELDS TO BE LEAK CHECKED WITH A HELIUM MASS SPECTROMETER WITH A SENSITIVITY TO 2×10^{-10} STD CC/SEC FOR HELIUM DIMENSIONS FOR ALL PARTS LISTED IN THE BILL OF MATERIALS ARE NOMINAL.
 - ORIENT ALL FLANGES AS SHOWN.
 - VIBRA TOOL PART NUMBER "ACC-200-3000-0449 REV. -" IN APPROXIMATE LOCATION USING .25" HIGH CHARACTERS.

TUBE CUT TABLE			
TUBE P/N	LENGTH	QTY	CUT ALLOWANCE REQUIRED
SST-02501	1.40	1	

SYMBOL LEGEND	DETAIL LEVEL: MSW-DCP-116, LEVEL 3	CLEANING PROCEDURE: MSW-DCP-101, LEVEL II	A	ALL	RELEASED FOR MANUFACTURING PER CUSTOMER DWG#	5/12/2014	SHP	DEC
	UNLESS OTHERWISE SPECIFIED MACHINING FINISHES SHALL BE:	UNLESS OTHERWISE SPECIFIED ALL OTHER SURFACE FINISHES SHALL BE:	NO.	ZONE	REVISION DESCRIPTION	DATE	BY	CHK
REVISION	N/A	AS SUPPLIED	1925 Route 51 Jefferson Hills, PA 15025-3681 phone: 1-800-245-1656 web: www.lesker.com			NOTE: THIS DRAWING, AND ITS CONTENT, IS THE CONFIDENTIAL AND PROPRIETARY INFORMATION OF KURT J. LESKER COMPANY AND CAN NOT BE DISCLOSED OR USED EXCEPT WITH THE EXPRESS WRITTEN PERMISSION OF KURT J. LESKER COMPANY.		
ITEM BALLOON						SCALE: FOR REFERENCE ONLY	1/4	APPROVED BY: ENR
FOCAL POINT	UNLESS OTHERWISE SPECIFIED REFER TO DOCUMENT STM-1201, KJLC STANDARD TOLERANCES AND MANUFACTURING PRACTICES				DATE: 5/9/2014	DATE: 5/9/2014	DATE: 5/5/2014	
INSPECTION BALLOON	UNLESS OTHERWISE SPECIFIED REFER TO DOCUMENT STM-1201, KJLC STANDARD TOLERANCES AND MANUFACTURING PRACTICES				TITLE: BELL JAR, 18" OD, 17" OAL. 304L SS, 2B FINISH			
WATER TRACE IDENTIFICATION	UNLESS OTHERWISE SPECIFIED REFER TO DOCUMENT STM-1201, KJLC STANDARD TOLERANCES AND MANUFACTURING PRACTICES				SIZE: MATERIAL SPECIFICATION: D AS NOTED		DRAWING NO.: PRD118573-0500	
CENTER OF GRAVITY IDENTIFICATION	UNLESS OTHERWISE SPECIFIED REFER TO DOCUMENT STM-1201, KJLC STANDARD TOLERANCES AND MANUFACTURING PRACTICES				KJLC PART NUMBER: BJ1817C00039		APPROX. WEIGHT: 138.8 lbs	
	UNLESS OTHERWISE SPECIFIED REFER TO DOCUMENT STM-1201, KJLC STANDARD TOLERANCES AND MANUFACTURING PRACTICES				SHEET: 1 OF 1			