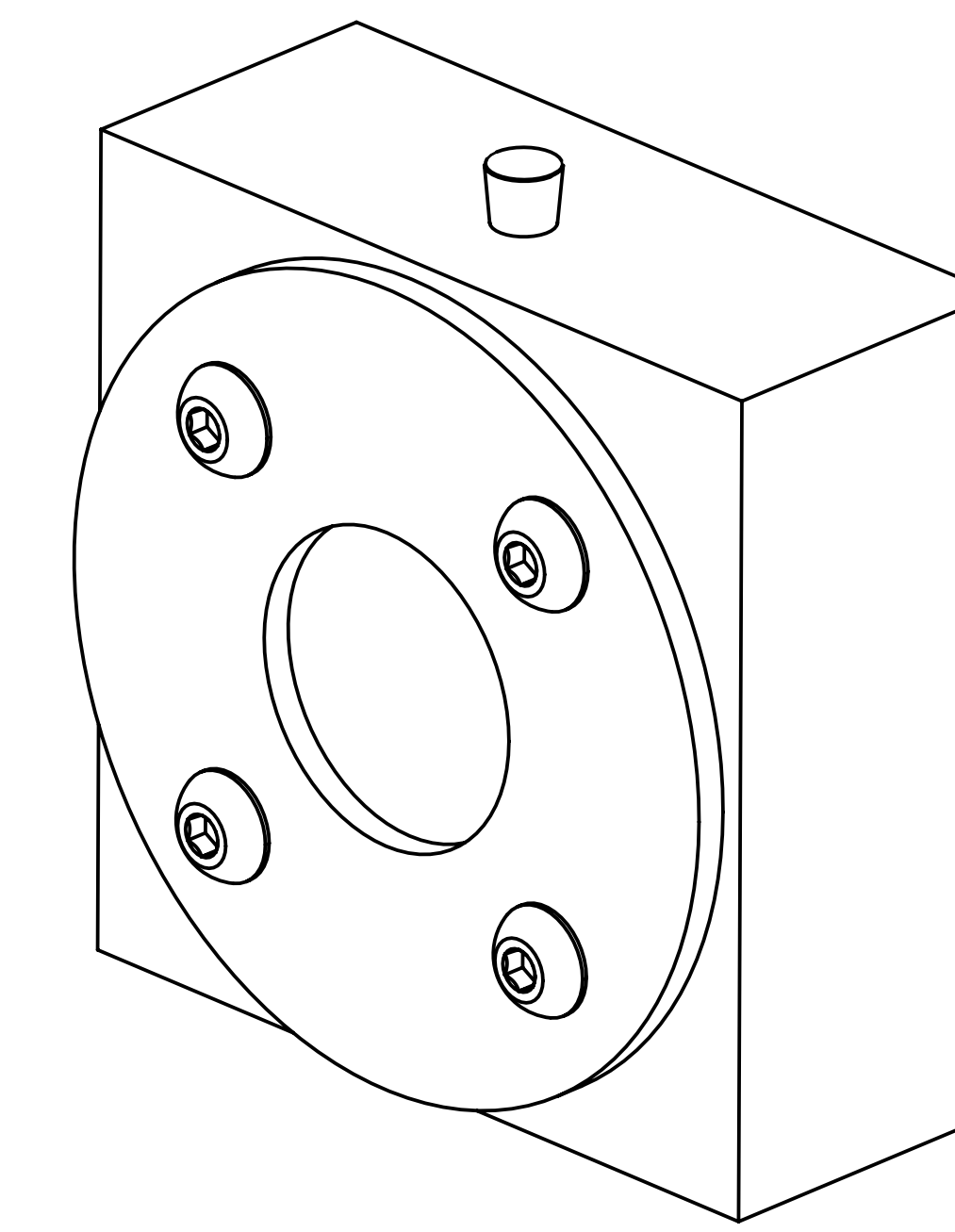
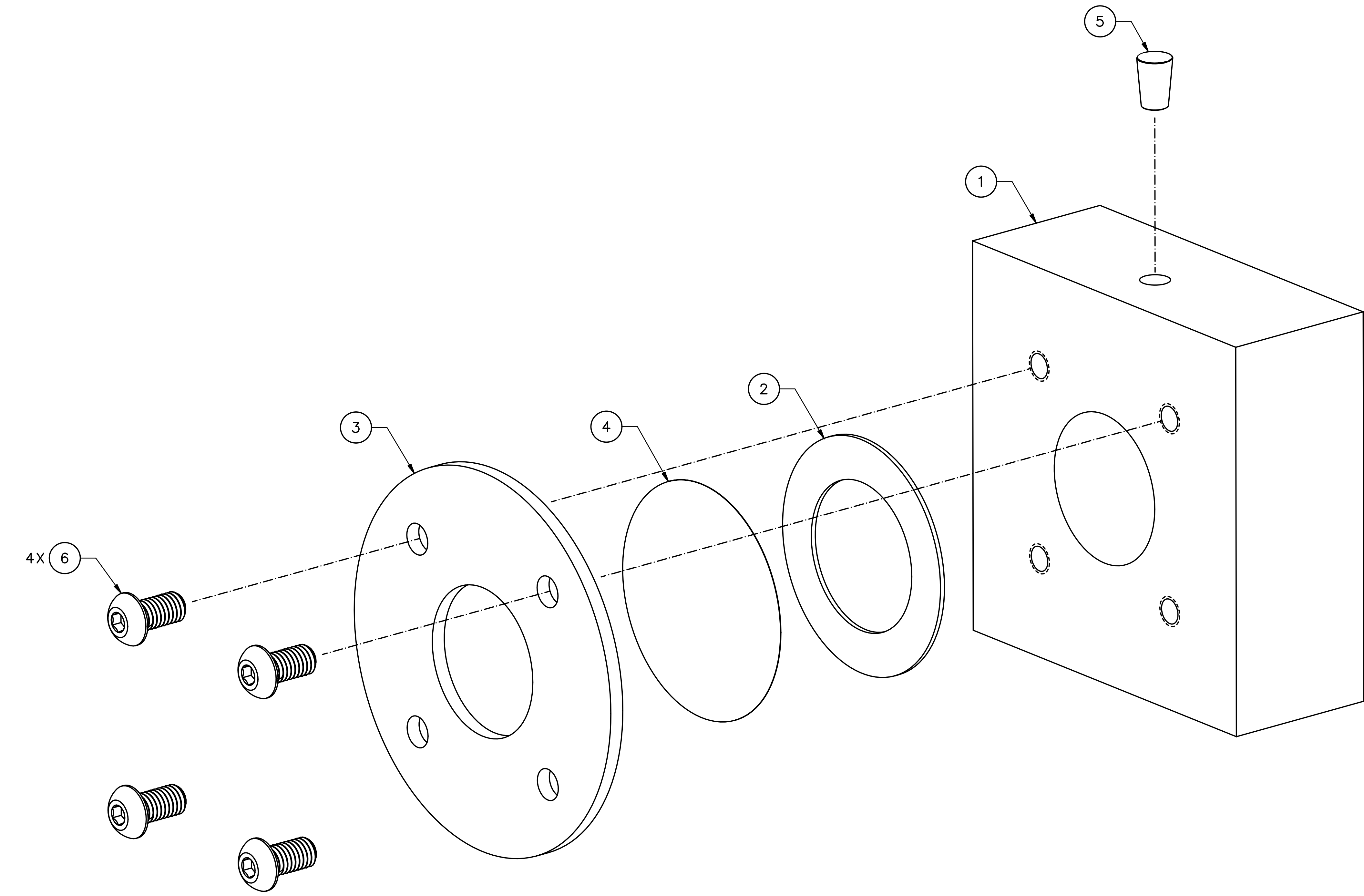


REVISION HISTORY			
ZONE	REV	DESCRIPTION	DATE/REVISER
2-B2	A	1. ITEM 4 FOIL, THICKNESS CHANGED FROM .01 TO .005.	10SEP20 C.M.SUTTON



ISOMETRIC VIEW
(NOT TO SCALE)



VIEW A
(SCALE 1:3)

QTY	ITEM	PART OR IDENTIFYING NO.	NOMENCLATURE OR DESCRIPTION	MATERIAL	NOTES
4	6	MCMASTER CARR 92949A622	HEX DRIVE BUTTON HEAD SCREW, 3/8-16 UNC X 3/4 LG	STAINLESS STEEL 18-8	-
1	5	MCMASTER CARR 9566K15 OR EQUIVALENT	CORK, TRADE SIZE 1 FOR 1 1/32" TO 1 3/32"	CORK	-
1	4	-04	FOIL, .005 THK	HARDENED STAINLESS STEEL 304	SH2
1	3	-03	COVER PLATE, 3/16 THK	ALUMINUM 6061	SH2
1	2	-02	CORK GASKET, 1/16 THK	CORK	SH2
1	1	-01	SAMPLE CONTAINER 3	ALUMINUM 6061-T6	SH2

△

EACH SHEET OF MULTI-SHEET DRAWINGS SHALL ALWAYS HAVE THE SAME REVISION LEVEL.

UNITF WATER SAMPLE IRRADIATION SAMPLE 3 ASSEMBLY

SIZE DWG. NO. JL0094388-0101 REV. A

SCALE 1:1

DATE 08MAY20

DRAWN C.M.SUTTON

UNITF Jefferson Lab Newport News Virginia

Jefferson Lab Thomas Jefferson National Accelerator Facility

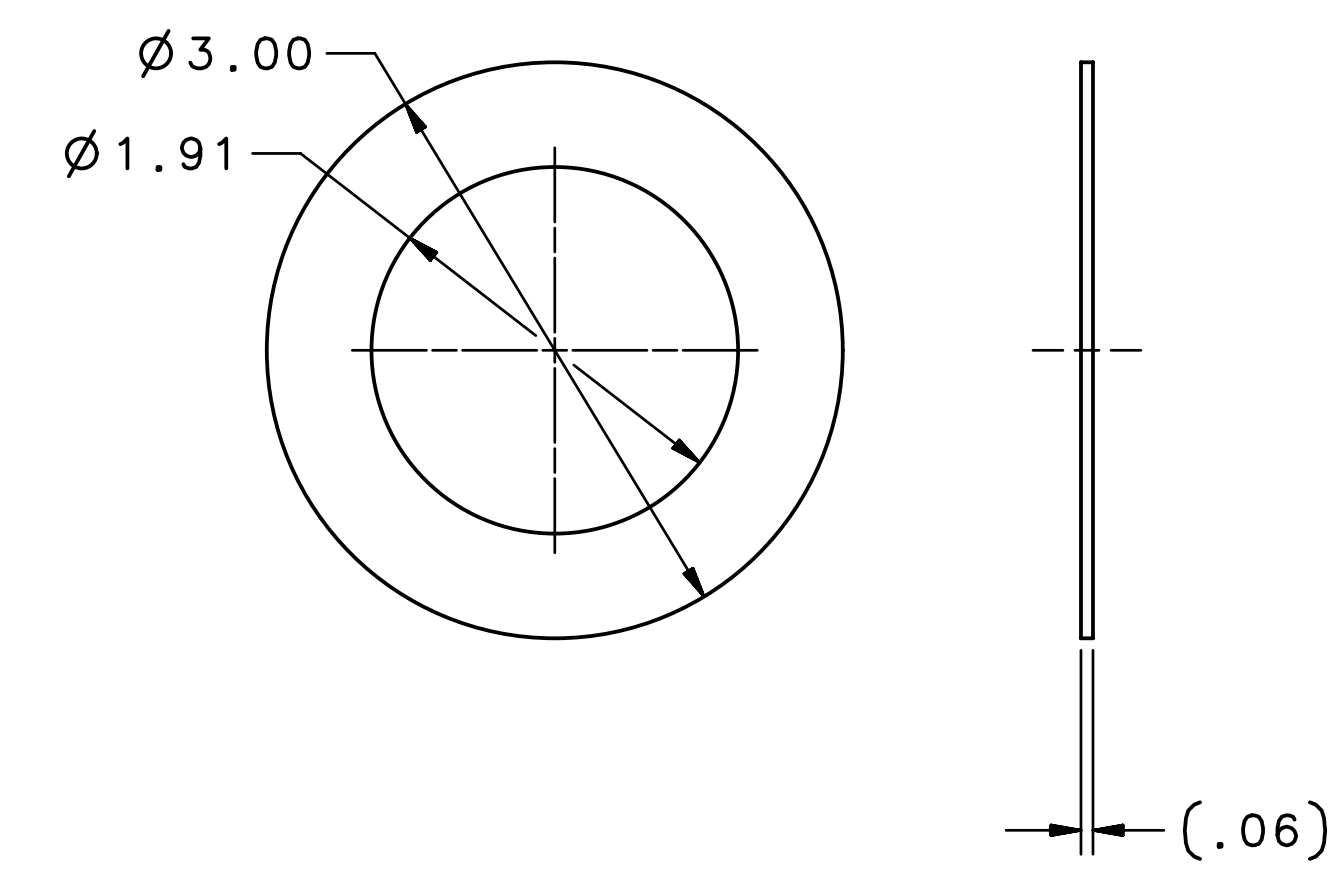
SEE PARTS LIST

THIRD ANGLE PROJECTION

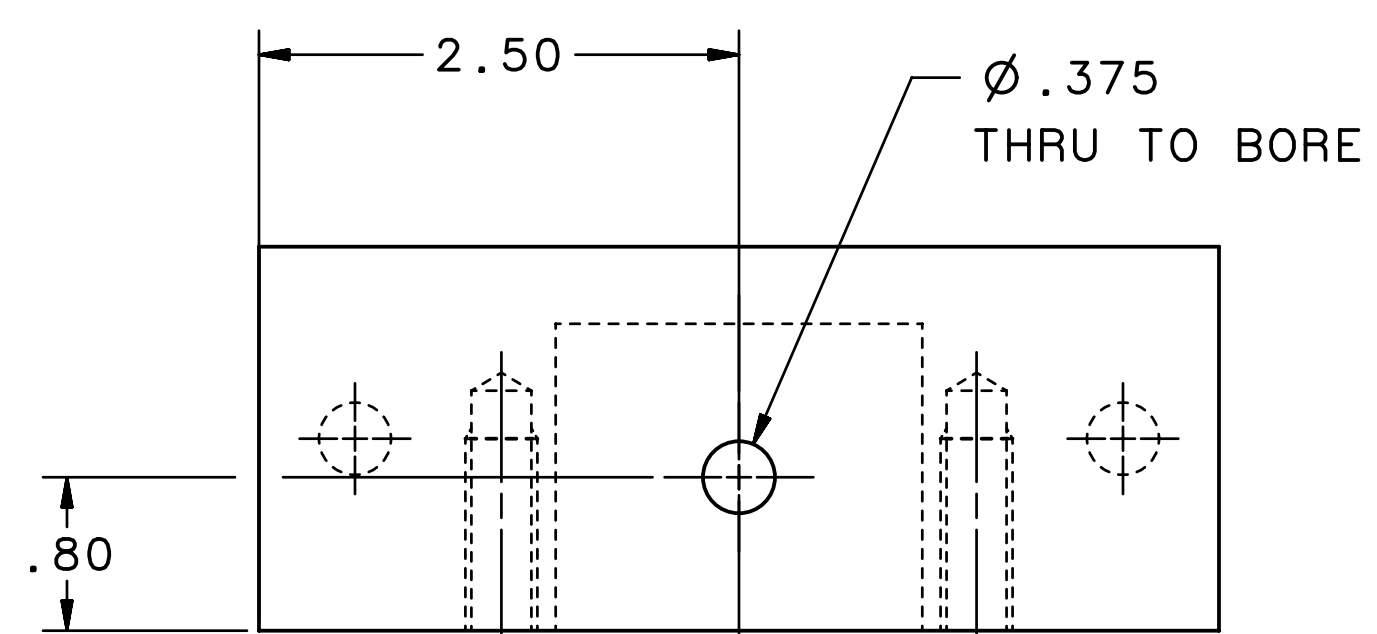
FINISH UNLESS OTHERWISE NOTED: MACHINED SURFACES 125 DEBURR & BREAK ALL SHARP EDGES

DO NOT SCALE DRAWING

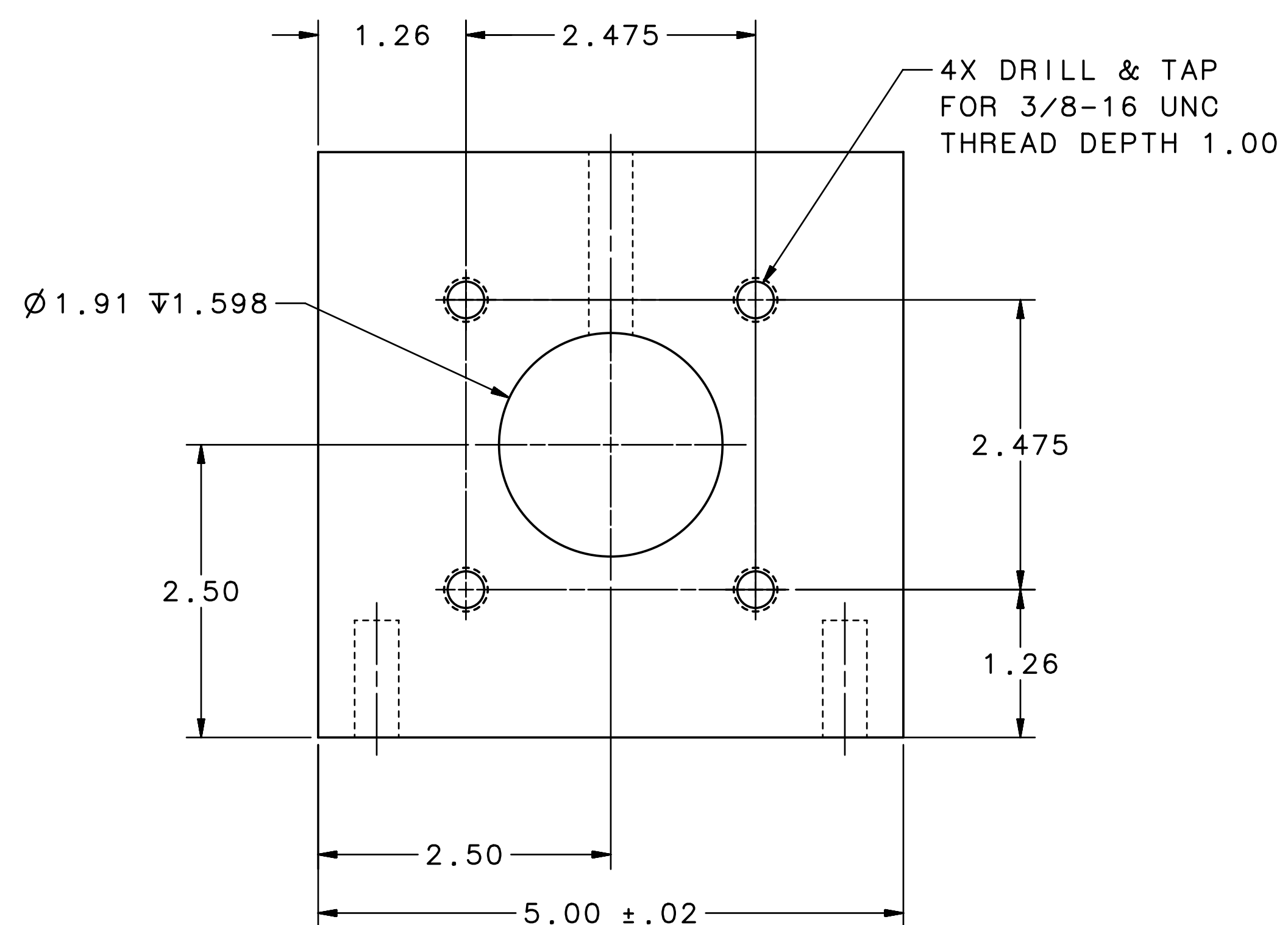
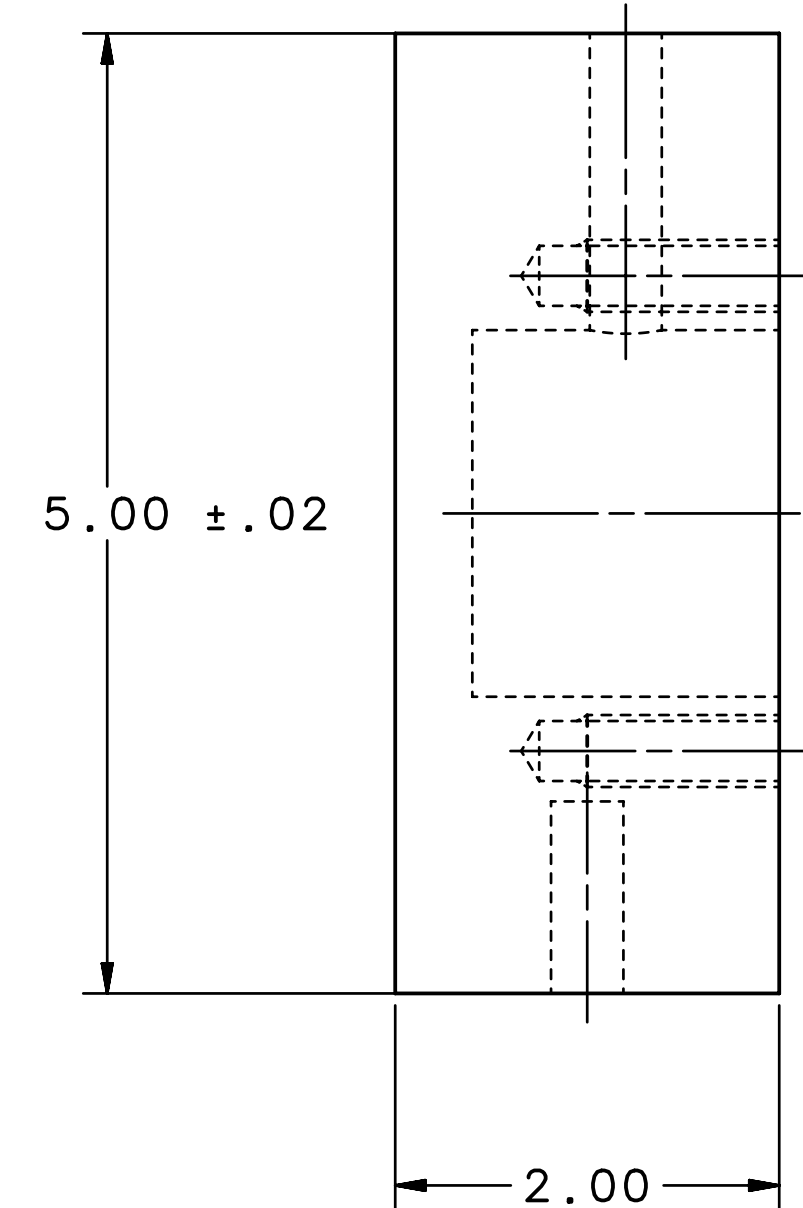
UNITF



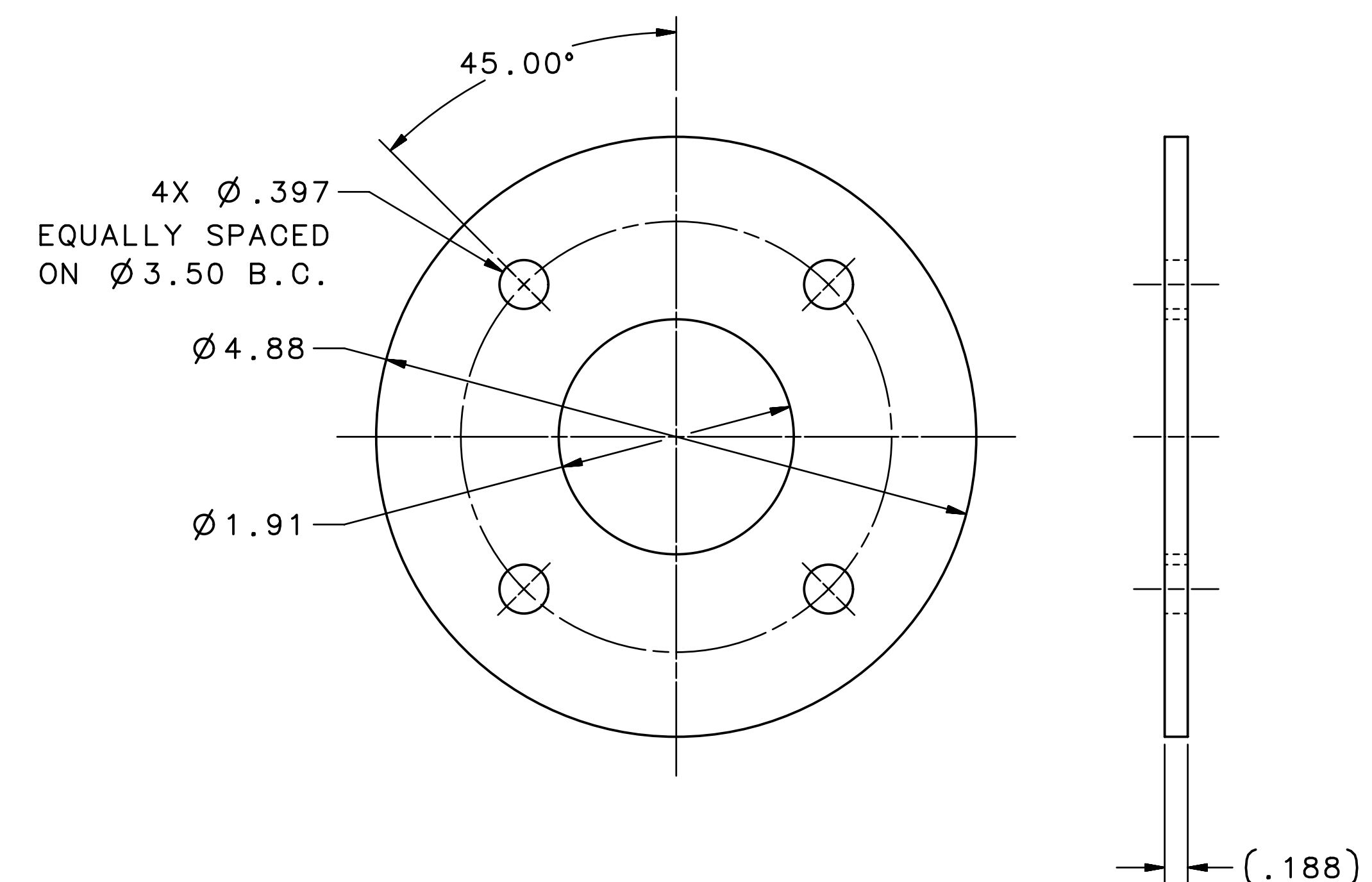
ITEM 2



ITEM 1



ITEM 3



ITEM 4

