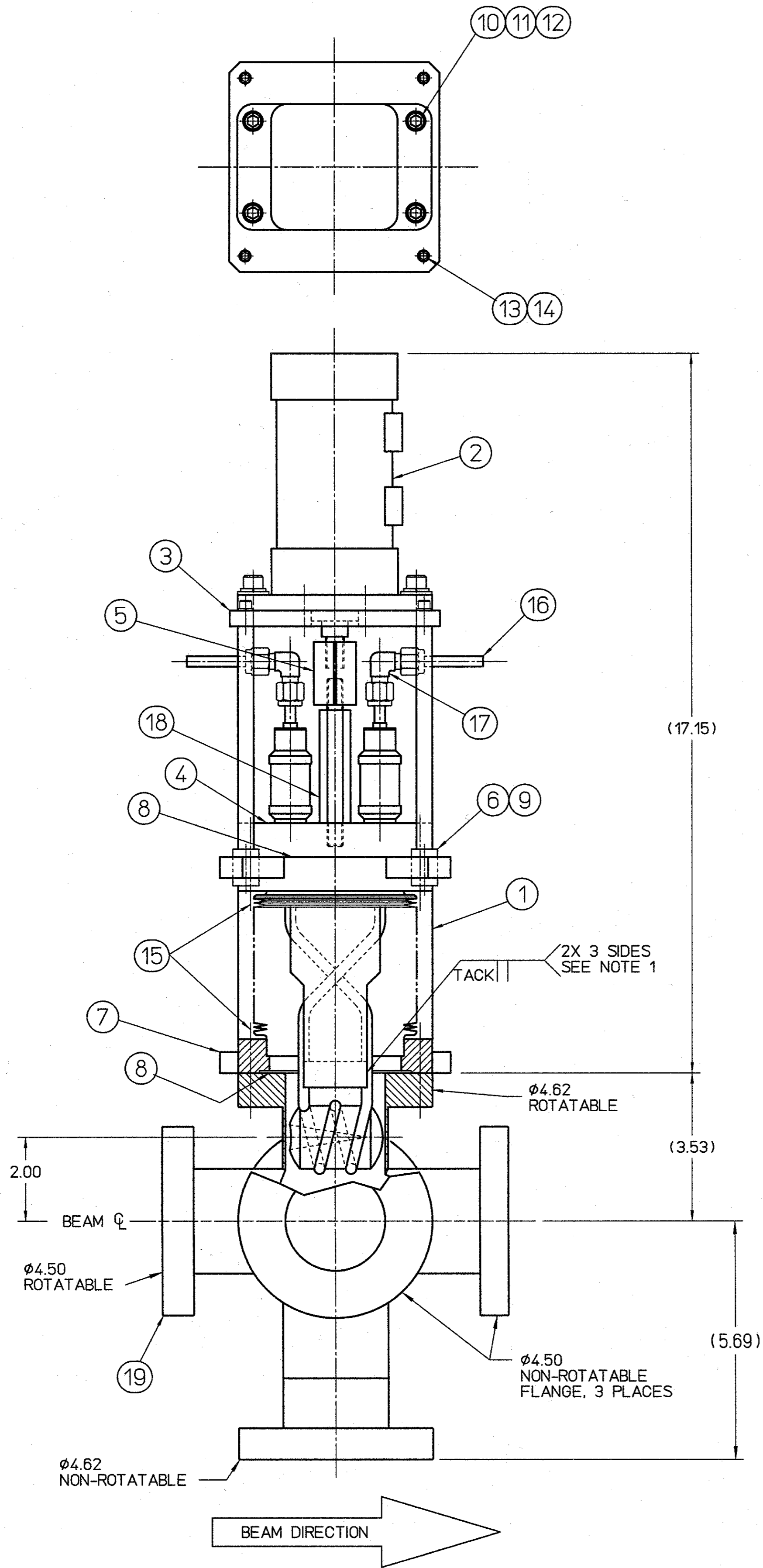


REVISION HISTORY				
ZONE	REV	DESCRIPTION	DATE	APPROVED



NOTE: UNLESS OTHERWISE SPECIFIED
 1. WELD AFTER ALIGNING CUP (ITEM 4) IN BEAM TUBE CROSS (ITEM 19).

QTY REQD	ITEM NO.	PART OR IDENTIFYING NO.	NOMENCLATURE OR DESCRIPTION	MATERIAL SPECIFICATION	NOTES
1	19	ACC2005000-0036	6 WAY CROSS MODIFIED		
1	18	58432-B-0357	STUD		
2	17	SWAGelok P/N SS-400-9	.25 UNION ELBOW	STAINLESS STEEL TYPE 316	
2	16		φ.25 x .035 WALL x 2.0 LONG TUBE	STAINLESS STEEL TYPE 304 ASTM A-269	
1	15	HPS P/N 100889044	BOLT SET, 313-24 UNF-2A X 1.25 LONG	SILVER PLATED STAINLESS STEEL	
4	14		LOCK WASHER, HI-COLLAR, #10	STAINLESS STEEL	
4	13		SCREW, SOCKET HEAD CAP, #10-32 UNF-2A X .50 LONG	STAINLESS STEEL	
4	12		LOCK WASHER, .313	STAINLESS STEEL	
4	11		WASHER, FLAT, .313	STAINLESS STEEL	
4	10		SCREW, SOCKET HEAD CAP, 313-18 UNC-2A X 1.00 LONG	STAINLESS STEEL	
8	9	THOMSON IND W-375	φ.375 EXTERNAL RETAINING RING	STEEL	
1	8	HPS P/N 100889005	GASKET FOR 4.62 OD FLANGE	COPPER	
1	7	ACC2005000-0046	CUP BELLOWS ASSEMBLY		
4	6	THOMSON IND A-61014-SS	φ.375 BORE BALL BUSHING BEARING PRECISION SERIES A	STAINLESS STEEL	
1	5	58432-B-0283	TURNBUCKLE-7/16		
1	4	ACC2005000-0031	CUP SUB-ASSEMBLY		
1	3	58432-B-0355	TOP PLATE		
1	2	TAIYO P/N FA250GB0200-ABQ2	AIR CYLINDER 2.50 BORE x 2.00 STROKE		
4	1	58432-B-0354	SUPPORT ROD		

DOCUMENT CONTROL STAMP 	DIM & TOL PER ASME Y14.5 UNLESS OTHERWISE SPECIFIED DIMENSIONS ARE IN INCHES TOLERANCES ARE: FRACTIONS DECIMAL ANGLES * XX ± .02 * XXX ± .005	TRACKING NO. N/A	U.S. Department of Energy Office of Science		Operated by Jefferson Science Associates, LLC
	MATERIAL SEE PARTS LIST	THIRD ANGLE PROJECTION 	APPROVALS DRAWN: D. MACHE CHECKED: [Signature] APPROVED: [Signature] APPROVED: [Signature]	DATE 23JUN11 7/25/11 7/25/11	ACC INJECTOR POSITRON FARADAY CUP ASSEMBLY
FINISH MACHINED SURFACES UNLESS OTHERWISE NOTED DEBURR & BREAK ALL SHARP EDGES	DO NOT SCALE DRAWING	SIZE DWG. NO. D ACC-200-5000-0030	SCALE 1:2	USED ON ASSY NO. N/A	SHEET 1 OF 1