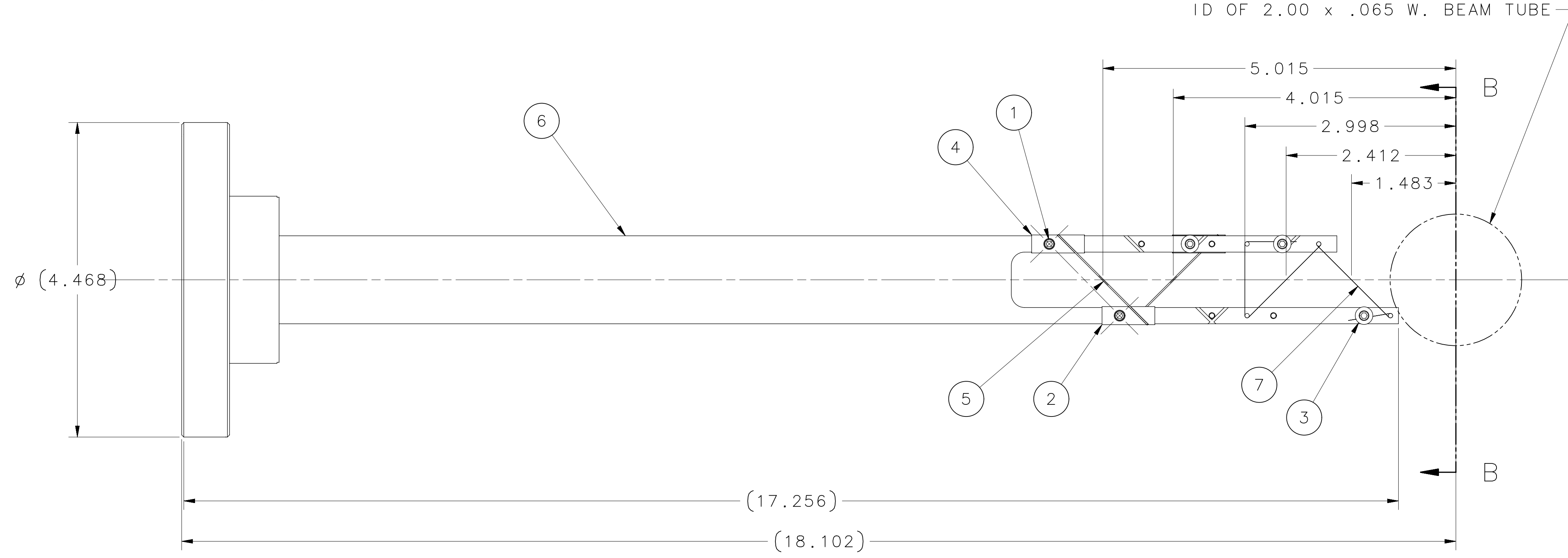
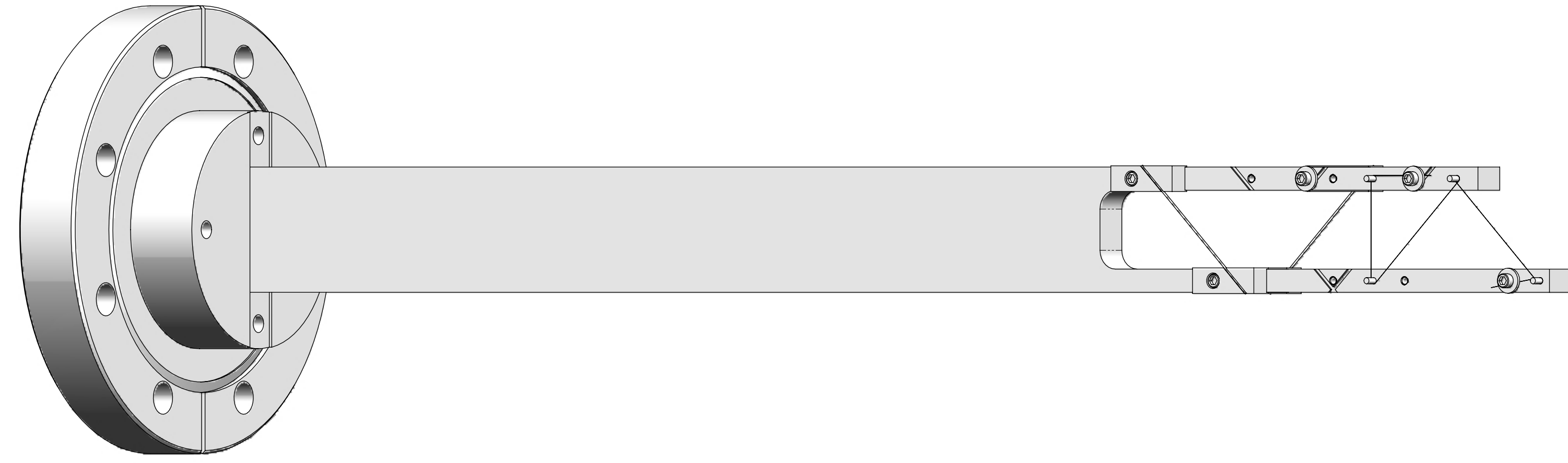
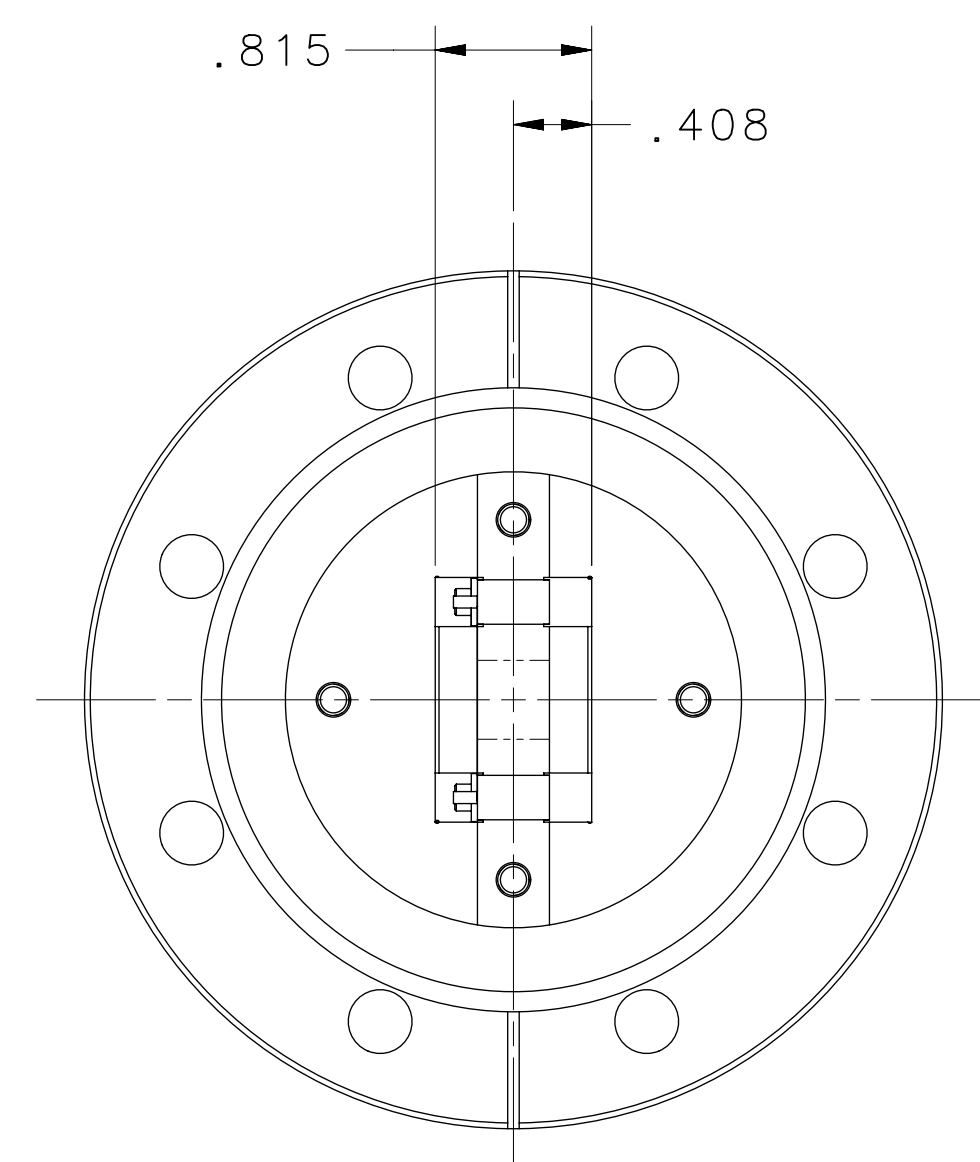


REVISION HISTORY		
ZONE	REV	DESCRIPTION
		DATE/REVISER



ID OF 2.00 x .065 W. BEAM TUBE



SECTION B-B

QTY REQD	ITEM NO.	PART OR IDENTIFYING NO.	NOMENCLATURE OR DESCRIPTION	MATERIAL SPECIFICATION	NOTES
	7		THIN WIRE		2
	6	JL0042613	HARP STICK MACHINING - KPP		
	5		WIRE ϕ .50mm	CARBON	2
	4	JL0043252	HARP/TARGET WIRE BLOCK-A	ALUMINUM_6061	
	3	ANSI_B18_22_1,B_R,NO.2	PLAIN WASHER, B REGULAR, AI,NO.2	STEEL	
	2	JL0043253	HARP/TARGET BLOCK-B	ALUMINUM_6061	
	1	ASME_B18_3,A,NO.2-56X0.25	HEX SOCKET HEAD CAP SCREW, AI,NO.2-56X0.25	STEEL	

- NOTES:
- SEE S. STEPANYAN (7196) FOR WIRE MATERIALS.
 - DIMENSIONS SHOWN ARE IN FULLY RETRACTED POSITION.
 - TORQUE BOLTS TO 2.5 IN/LBS.

DIM & TOL PER ASME Y14.5-2009. UNLESS OTHERWISE SPECIFIED DIMENSIONS ARE IN INCHES. TOLERANCES ARE: FRACTIONS DECIMAL ANGLES $\pm 1/8$.X \pm N/A $\pm .50^\circ$.XX \pm .02 .XXX \pm .005	MATERIAL SEE PARTS LIST	United States Department of Energy Jefferson Lab Thomas Jefferson National Accelerator Facility Newport News Virginia
		HALL B 02 BEAM LINE 09 HARP HARP/TARGET STICK ASSY. - KPP
THIRD ANGLE PROJECTION 	FINISH MACHINE SURFACES DEBURR & BREAK ALL SHARP EDGES UNLESS OTHERWISE NOTED DO NOT SCALE DRAWING	SIZE DWG. NO. D BRGKPP-02-09-0300 SCALE 1:1 USED ON ASSY NO. BRGKPP-02-09-0200 SHEET 1 OF 1
DRAWN M. ZARECKY DATE 1/19/2017	REV. -	