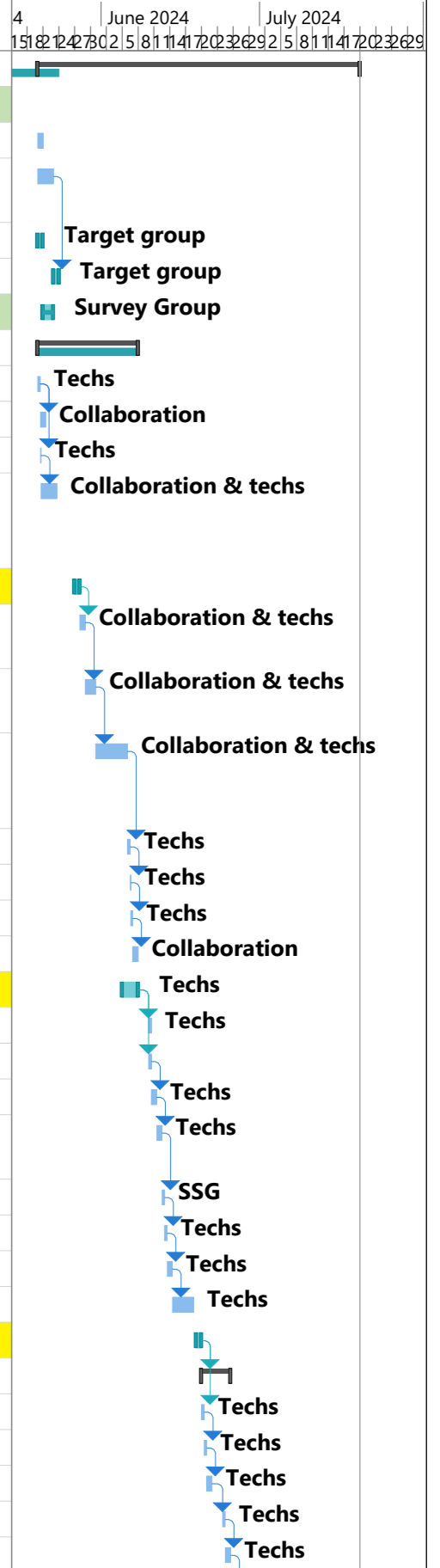


ID	Task Mode	Task Name	Duration	Start	Finish	Predecessors	Resource Names	Storage location	% Complete
1		NPS Removal Right Side of SHMS	45 days	Mon 5/20/24	Fri 7/19/24				29%
2		Removed Lead shielding from Magnet	0.5 days	Mon 4/22/24	Mon 4/22/24		Techs	Outside	100%
3		Power down and lock out PSUs	1 day	Mon 5/20/24	Mon 5/20/24				0%
4		Que for Target/ beamline close work for Dose to decay	3 days	Mon 5/20/24	Wed 5/22/24				0%
5		Warm up target from gas panel	1 day	Mon 5/20/24	Mon 5/20/24		Target group		0%
6		Bleed up Target chamber	1 day	Thu 5/23/24	Thu 5/23/24	4	Target group		0%
7		Survey Calorimeter at last positions	2 days	Tue 5/21/24	Wed 5/22/24		Survey Group		100%
8		Detector removal	15 days	Mon 5/20/24	Fri 6/7/24				0%
9		Remove Side shielding from Detector	0.5 days	Mon 5/20/24	Mon 5/20/24		Techs	64- Fabric Storage	0%
10		Disconnect Chiller and Air cooling	1 day	Mon 5/20/24	Tue 5/21/24	9	Collaboration		0%
11		Remove dog house	0.25 days	Mon 5/20/24	Mon 5/20/24	9	Techs		0%
12		Disconnect 62 LED Ribbon cables at rack and Calo - add protective covers - spooled up cables-place in bins	3 days	Mon 5/20/24	Thu 5/23/24	11	Collaboration & techs		0%
13		Holiday	1 day	Mon 5/27/24	Mon 5/27/24				0%
14		Disconnect instrumentation cables, grounding cables, LCW hoses	1 day	Tue 5/28/24	Tue 5/28/24	13	Collaboration & techs	PSB - 2nd floor	0%
15		Disconnect 32 HV cables at rack and Calo -add protective covers - placed in bins	2 days	Wed 5/29/24	Thu 5/30/24	14	Collaboration & techs	PSB - 2nd floor	0%
16		Disconnect 1,100 data cables from Detector patch panel and Calo - add protective covers - placed in bins	4 days	Fri 5/31/24	Wed 6/5/24	15	Collaboration & techs	PSB - 2nd floor	0%
17		Remove framework from top of Detector	0.5 days	Thu 6/6/24	Thu 6/6/24	16	Techs	64- Fabric Storage	0%
18		Remove Cable CART from SHMS	0.25 days	Thu 6/6/24	Thu 6/6/24	17	Techs	ESB	0%
19		Remove Detector (on rail section) from SHMS	0.25 days	Thu 6/6/24	Thu 6/6/24	18	Techs	In Hall	0%
20		Prepare Detector for Open House Viewing	1 day	Fri 6/7/24	Fri 6/7/24	19	Collaboration		0%
21		Open House Setup (2.5 days of cleaning and setup)	3 days	Wed 6/5/24	Fri 6/7/24		Techs		0%
22		Transport cable cart out of hall	0.5 days	Mon 6/10/24	Mon 6/10/24	21	Techs	64- Fabric Storage	0%
23		Remove Detector from hall to ESB	0.5 days	Mon 6/10/24	Mon 6/10/24	21		ESB	0%
24		Remove vertical cable support by Q3	1 day	Mon 6/10/24	Tue 6/11/24	23	Techs	64- Fabric Storage	0%
25		Remove Chiller and its shielding	1 day	Tue 6/11/24	Wed 6/12/24	24	Techs	PSB? Offsite? & 64- Lead storage	0%
26		De-cable Downstream corrector magnet	0.5 days	Wed 6/12/24	Wed 6/12/24	25	SSG		0%
27		Remove Downstream corrector magnet	0.5 days	Thu 6/13/24	Thu 6/13/24	26	Techs	ESB	0%
28		Remove first section of down stream beam line	1 day	Thu 6/13/24	Fri 6/14/24	27	Techs	outside	0%
29		Remove Upstream Beamline supports	2 days	Fri 6/14/24	Tue 6/18/24	28	Techs	64- Fabric Storage	0%
30		Holiday	1 day	Wed 6/19/24	Wed 6/19/24				0%
31		Sweeper Magnet removal	3.5 days	Thu 6/20/24	Tue 6/25/24	30	Techs		0%
32		Disconnect LCW lines	0.5 days	Thu 6/20/24	Thu 6/20/24	30	Techs	PSB	0%
33		Disconnect DC bus cables	0.5 days	Thu 6/20/24	Thu 6/20/24	32	Techs	PSB	0%
34		Disconnect instrumentation cables	1 day	Fri 6/21/24	Fri 6/21/24	33	Techs	PSB	0%
35		Unbolt magnet from pads	0.5 days	Mon 6/24/24	Mon 6/24/24	34	Techs		0%
36		Crane magnet off spectrometer	1 day	Mon 6/24/24	Tue 6/25/24	35	Techs	Test Lab	0%



ID	Task Mode	Task Name	Duration	Start	Finish	Predecessors	Resource Names	Storage location	% Complete
37		Remove Slide plate and Magnet supports	2 days	Tue 6/25/24	Thu 6/27/24	36	Techs	64- Fabric Storage	0%
38		Pinning/welding the detector rail backbone.	2 days	Thu 6/27/24	Mon 7/1/24	37			0%
39		Remove rails from deck platform	3 days	Fri 4/26/19	Tue 4/30/19		Techs	64- Fabric Storage	0%
40		Remove platform stairs	1 day	Wed 5/1/19	Wed 5/1/19	39	Techs	64- Fabric Storage	0%
41		Holiday	2 days	Thu 7/4/24	Fri 7/5/24				0%
42		Remove detector platform	4 days	Mon 7/8/24	Thu 7/11/24	41	Techs	64- Fabric Storage	0%
43		Remove detector deck supports	3 days	Fri 7/12/24	Tue 7/16/24	42	Techs	64- Fabric Storage	0%
44		Move Crates from SHMS detector Hut Electronics room	2 days	Wed 7/17/24	Thu 7/18/24	43	Techs	Hall A	0%
45		Store spare parts and tools					Collaboration	NPS clean room & PSB	0%

