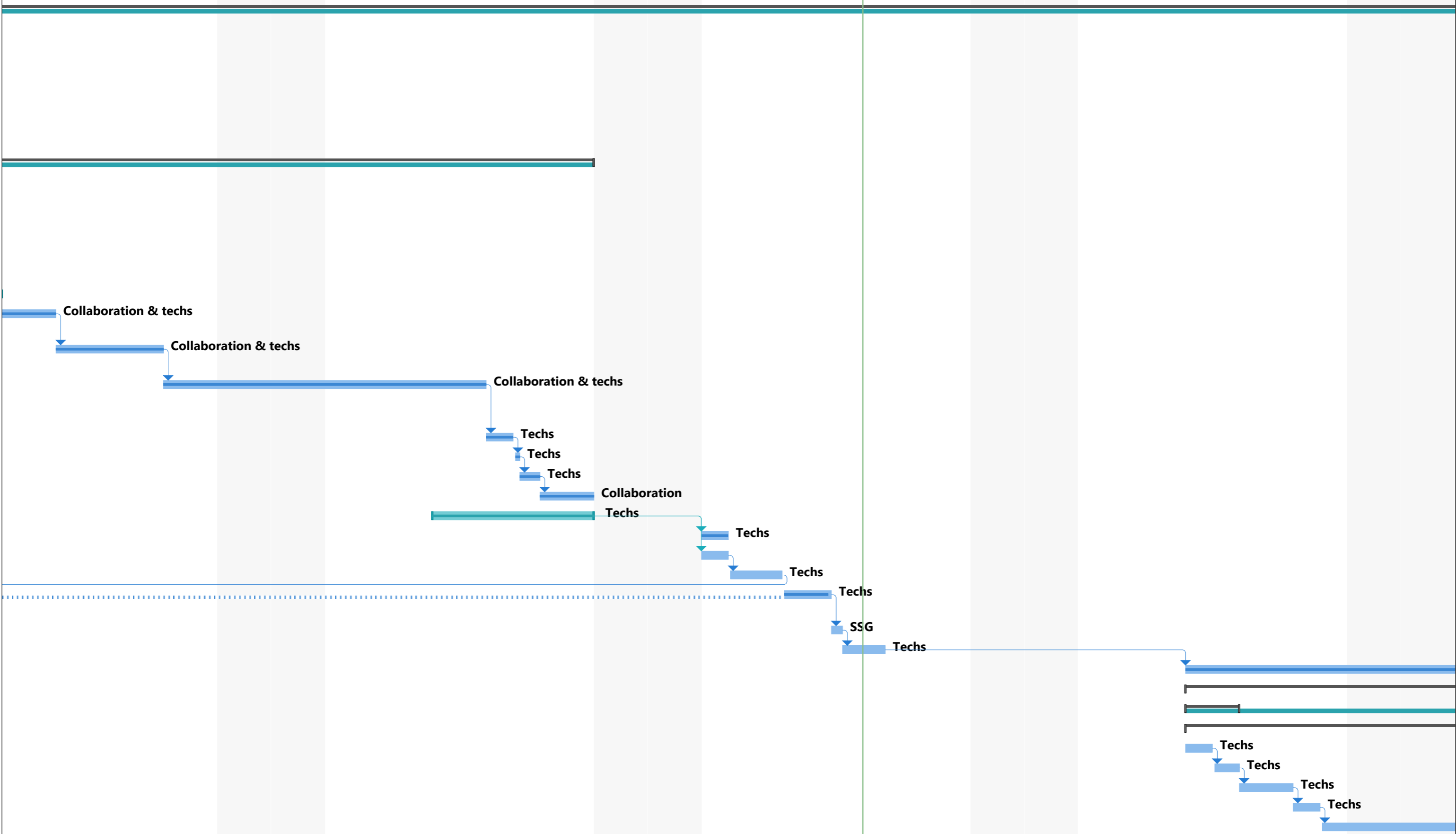


ID	Task Mode	Task Name	Duration	Start	Finish	Predecessors	Resource Names	Storage location	% Complete	May 26, '24			
										F	S	S	M
1		<b>NPS Removal Right Side of SHMS</b>	<b>64 days</b>	<b>Mon 4/22/24</b>	<b>Thu 7/18/24</b>				<b>48%</b>				
2		Removed Lead shielding from Magnet	0.5 days	Mon 4/22/24	Mon 4/22/24		Techs	Outside	100%				
3		Power down and lock out PSUs	1 day	Mon 5/20/24	Mon 5/20/24				100%				
4		Que for Target/ beamline close work for Dose to decay	3 days	Mon 5/20/24	Wed 5/22/24				100%				
5		Warm up target from gas panel	1 day	Mon 5/20/24	Mon 5/20/24		Target group		100%				
6		Bleed up Target chamber	1 day	Thu 5/23/24	Thu 5/23/24	4	Target group		100%				
7		Survey Calorimeter at last positions	2 days	Tue 5/21/24	Wed 5/22/24		Survey Group		100%				
8		<b>Detector removal</b>	<b>15 days</b>	<b>Mon 5/20/24</b>	<b>Fri 6/7/24</b>				<b>99%</b>				
9		Remove Side shielding from Detector	0.5 days	Mon 5/20/24	Mon 5/20/24		Techs	64- Fabric Storage	95%				
10		Disconnect Chiller and Air cooling	1 day	Mon 5/20/24	Tue 5/21/24		Collaboration		100%				
11		Remove dog house	0.25 days	Mon 5/20/24	Mon 5/20/24		Techs		100%				
12		Disconnect 62 LED Ribbon cables at rack and Calo - add protective covers - spooled up cables-place in bins	3 days	Mon 5/20/24	Thu 5/23/24	11	Collaboration & techs		100%				
13		<b>Holiday</b>	<b>1 day</b>	<b>Mon 5/27/24</b>	<b>Mon 5/27/24</b>				<b>100%</b>				
14		Disconnect instrumentation cables, grounding cables, LCW hoses	1 day	Tue 5/28/24	Tue 5/28/24	13	Collaboration & techs	PSB - 2nd floor	100%				
15		Disconnect 32 HV cables at rack and Calo -add protective covers - placed in bins	2 days	Wed 5/29/24	Thu 5/30/24	14	Collaboration & techs	PSB - 2nd floor	100%				
16		Disconnect 1,100 data cables from Detector patch panel and Calo - add protective covers - placed in bins	4 days	Fri 5/31/24	Wed 6/5/24	15	Collaboration & techs	PSB - 2nd floor	100%				
17		Remove framework from top of Detector	0.5 days	Thu 6/6/24	Thu 6/6/24	16	Techs	64- Fabric Storage	95%				
18		Remove Cable CART from SHMS	0.25 days	Thu 6/6/24	Thu 6/6/24	17	Techs	ESB	100%				
19		Remove Detector (on rail section) from SHMS	0.25 days	Thu 6/6/24	Thu 6/6/24	18	Techs	In Hall	100%				
20		Prepare Detector for Open House Viewing	1 day	Fri 6/7/24	Fri 6/7/24	19	Collaboration		100%				
21		<b>Open House Setup (2.5 days of cleaning and setup)</b>	<b>3 days</b>	<b>Wed 6/5/24</b>	<b>Fri 6/7/24</b>		Techs		100%				
22		Transport cable cart out of hall	0.5 days	Mon 6/10/24	Mon 6/10/24	21	Techs	64- Fabric Storage	95%				
23		Remove Detector from hall to ESB	0.5 days	Mon 6/10/24	Mon 6/10/24	21		ESB	0%				
24		Remove vertical cable support by Q3	1 day	Mon 6/10/24	Tue 6/11/24	23	Techs	64- Fabric Storage	0%				
25		Remove Chiller and its shielding	3.75 days	Tue 5/21/24	Wed 6/12/24	24	Techs	PSB? Offsite? & 64- Lead storage	95%				
26		De-cable Downstream corrector magnet	0.5 days	Wed 6/12/24	Wed 6/12/24	25	SSG		0%				
27		Remove Downstream corrector magnet	0.5 days	Wed 6/12/24	Thu 6/13/24	26	Techs	ESB	0%				
28		Remove first section of down stream beam line	22 days	Wed 6/19/24	Thu 7/18/24	27	Techs	outside	16%				
29		<b>Remove Upstream Beamline supports</b>	<b>22 days</b>	<b>Wed 6/19/24</b>	<b>Thu 7/18/24</b>		<b>Techs</b>	<b>64- Fabric Storage</b>	<b>16%</b>				
30		<b>Holiday</b>	<b>1 day</b>	<b>Wed 6/19/24</b>	<b>Wed 6/19/24</b>				<b>16%</b>				
31		<b>Sweeper Magnet removal</b>	<b>3.5 days</b>	<b>Wed 6/19/24</b>	<b>Mon 6/24/24</b>		<b>Techs</b>		<b>0%</b>				
32		Disconnect LCW lines	0.5 days	Wed 6/19/24	Wed 6/19/24		Techs	PSB	0%				
33		Disconnect DC bus cables	0.5 days	Wed 6/19/24	Wed 6/19/24	32	Techs	PSB	0%				
34		Disconnect instrumentation cables	1 day	Thu 6/20/24	Thu 6/20/24	33	Techs	PSB	0%				
35		Unbolt magnet from pads	0.5 days	Fri 6/21/24	Fri 6/21/24	34	Techs		0%				
36		Crane magnet off spectrometer	1 day	Fri 6/21/24	Mon 6/24/24	35	Techs	Test Lab	0%				

ID	Task Mode	Task Name	Duration	Start	Finish	Predecessors	Resource Names	Storage location	% Complete	May 26, '24			
										F	S	S	M
37		Remove Slide plate and Magnet supports	2 days	Mon 6/24/24	Wed 6/26/24	36	Techs	64- Fabric Storage	0%				
38		Pinning/welding the detector rail backbone.	2 days	Wed 6/26/24	Fri 6/28/24	37			0%				
39		Remove rails from deck platform	3 days	Wed 6/19/24	Fri 6/21/24		Techs	64- Fabric Storage	95%				
40		Remove platform stairs	1 day	Mon 6/24/24	Mon 6/24/24	39	Techs	64- Fabric Storage	95%				
41		<b>Holiday</b>	2 days	Thu 7/4/24	Fri 7/5/24				0%				
42		Remove detector platform	4 days	Mon 7/8/24	Thu 7/11/24	41	Techs	64- Fabric Storage	0%				
43		Remove detector deck supports	3 days	Fri 7/12/24	Tue 7/16/24	42	Techs	64- Fabric Storage	0%				
44		Move Crates from SHMS detector Hut Electronics room	2 days	Wed 7/17/24	Thu 7/18/24	43	Techs	Hall A	0%				
45		Store spare parts and tools					Collaboration	NPS clean room & PSB	0%				



T	W	T	F	S	Jun 2, '24	M	T	W	T	F	S	Jun 9, '24	M	T	W	T	F	S	Jun 16, '24	M	T	W	T	F	S	Jun 23, '24

**Techs**



