

# Compact Photon Source CAD Design

---

DHARA LIYANAGE

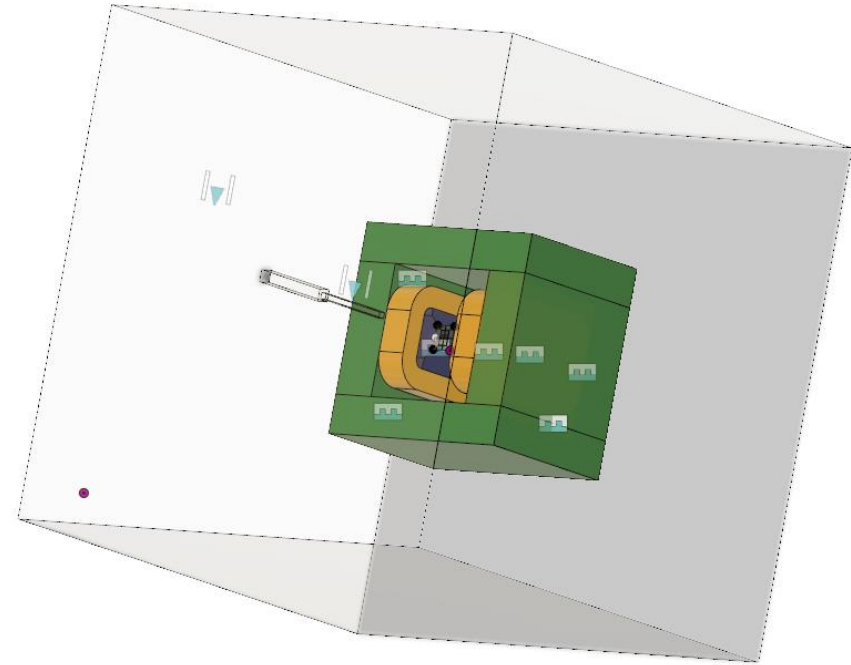
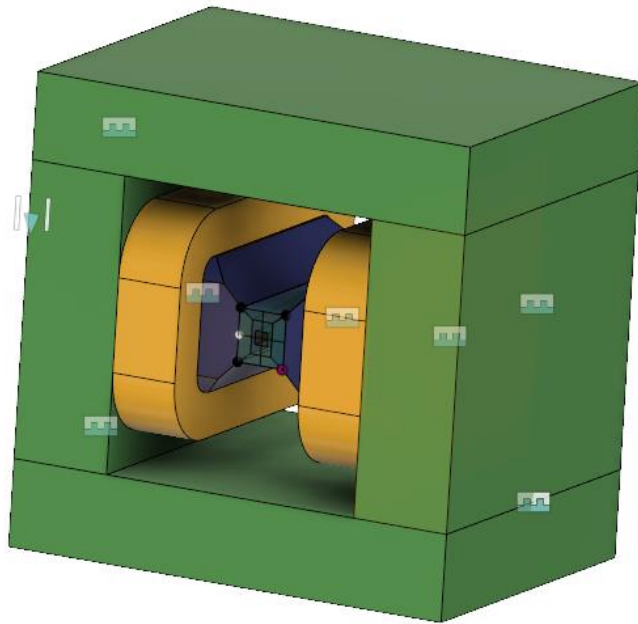
ALBEMARLE HIGH SCHOOL

SENIOR

A solid orange horizontal bar spanning the width of the slide at the bottom.

# Overall View

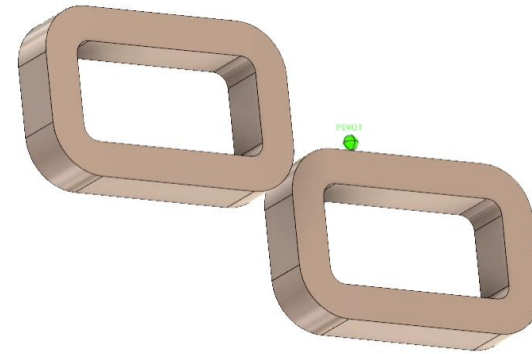
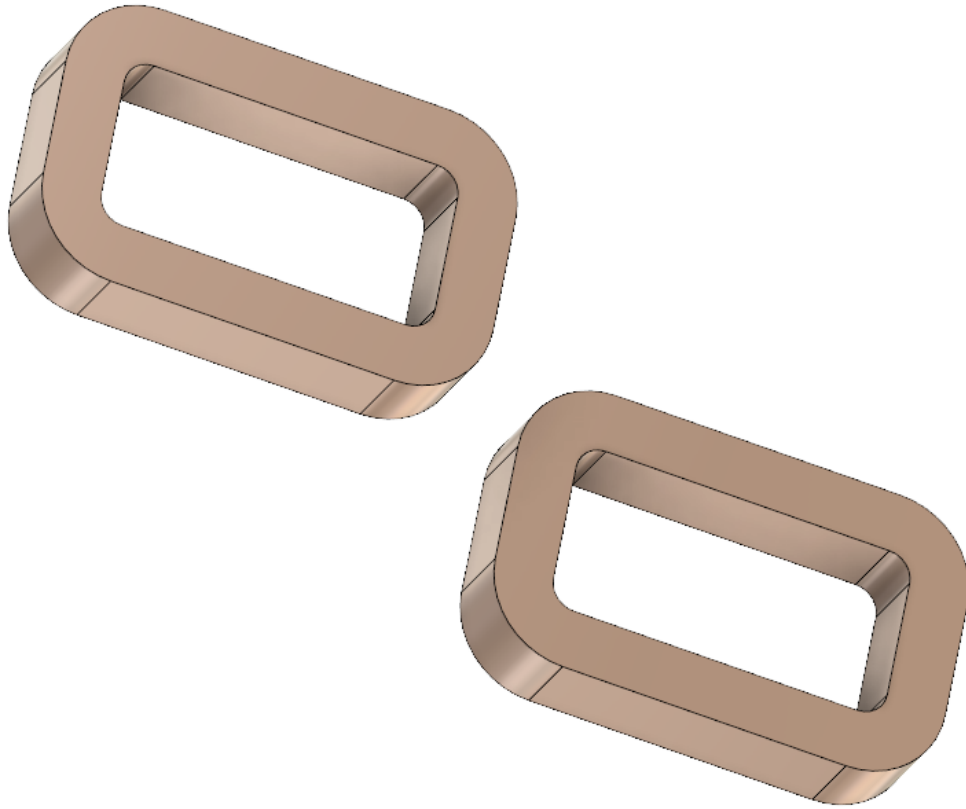
---



With outer shield

# Cu Coils

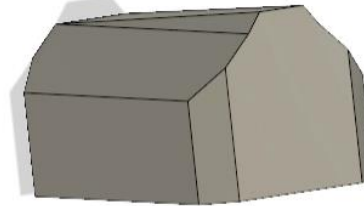
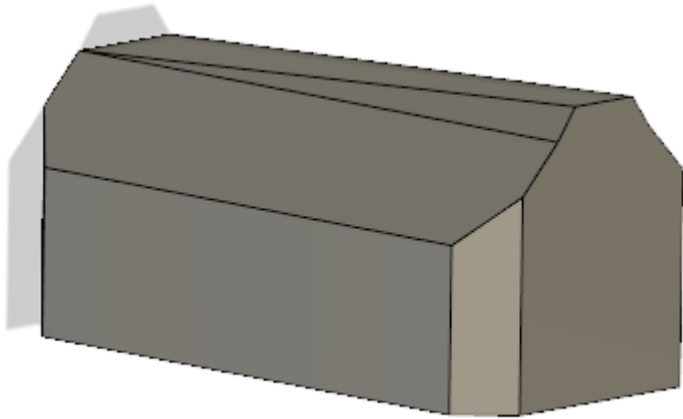
---



Video for additional perspective points

# Pole (assumed to be iron)

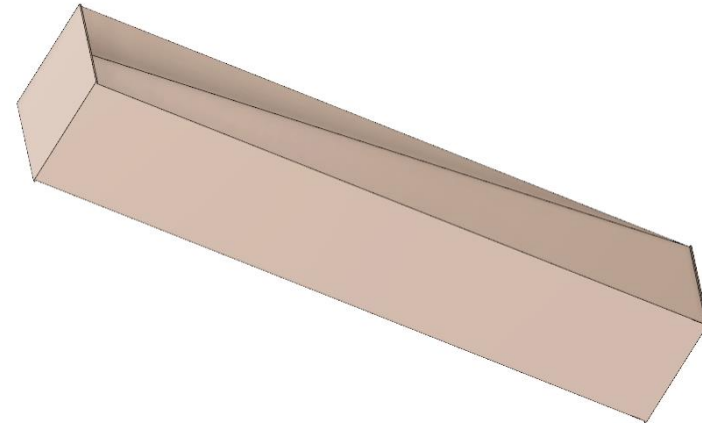
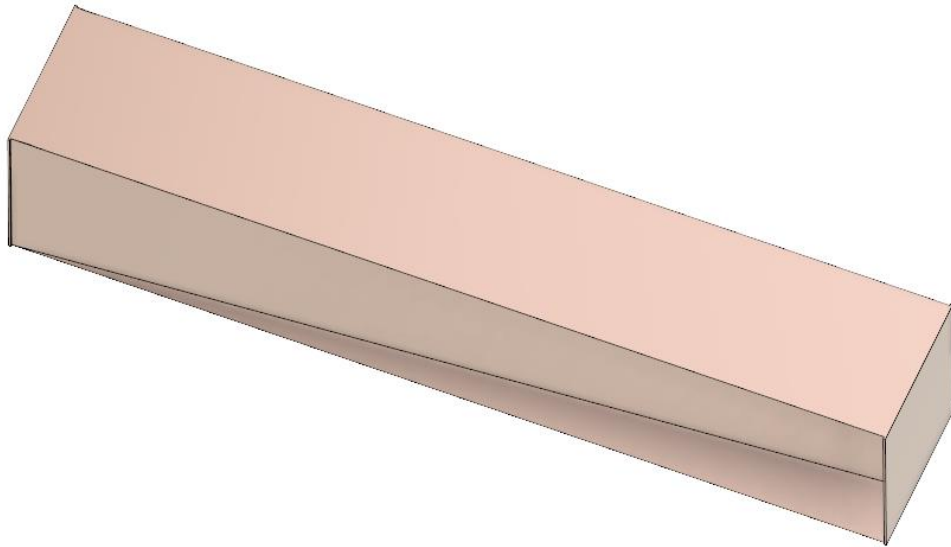
---



Video for additional perspective points

# Cu Core

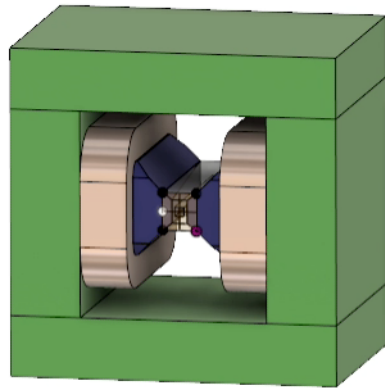
---



Video for additional perspective points

# Exploded View

---



Video for exploded view

# Summary

---

- The CAD model has been created in Autodesk Fusion
- Exact measurements were used
- Approximate materials have been assigned to different components in the design

Future Work:

- Calculate stress values on each component

