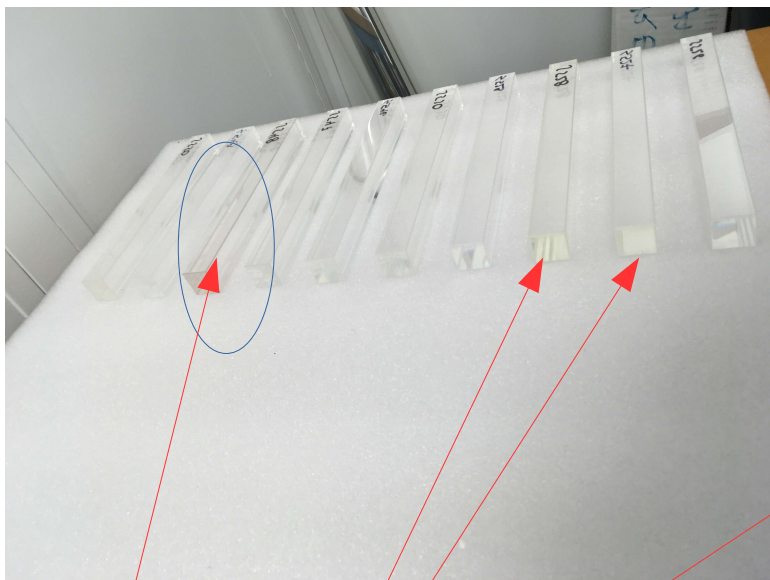




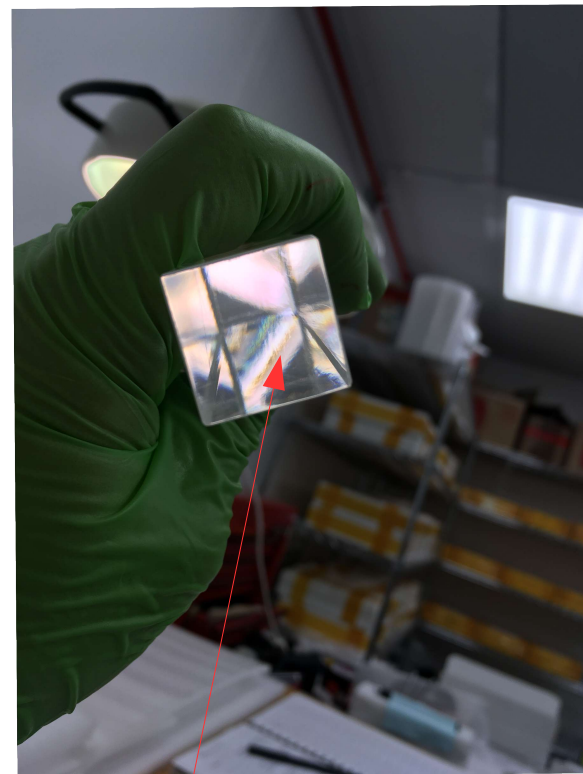
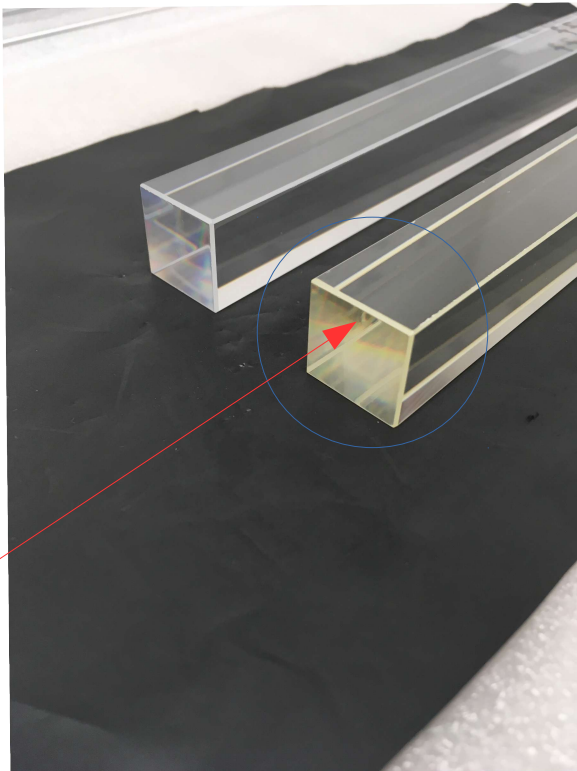
Crystal packaging:

- Old boxes, dirty and falling apart
- Can not unpack those boxes in cleanroom environment
- 5 crystals per box is better than 10 per box, but packing quality improvement definitely needed, safety of crystals still concern if move them from facility to facility for QA

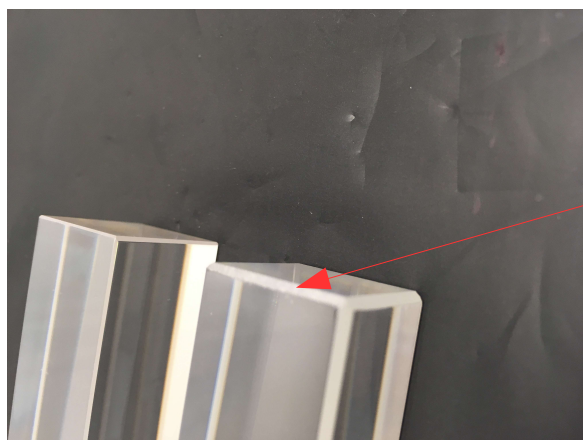




Brown, yellow and different color crystals will be rejected, transmittance out of specification

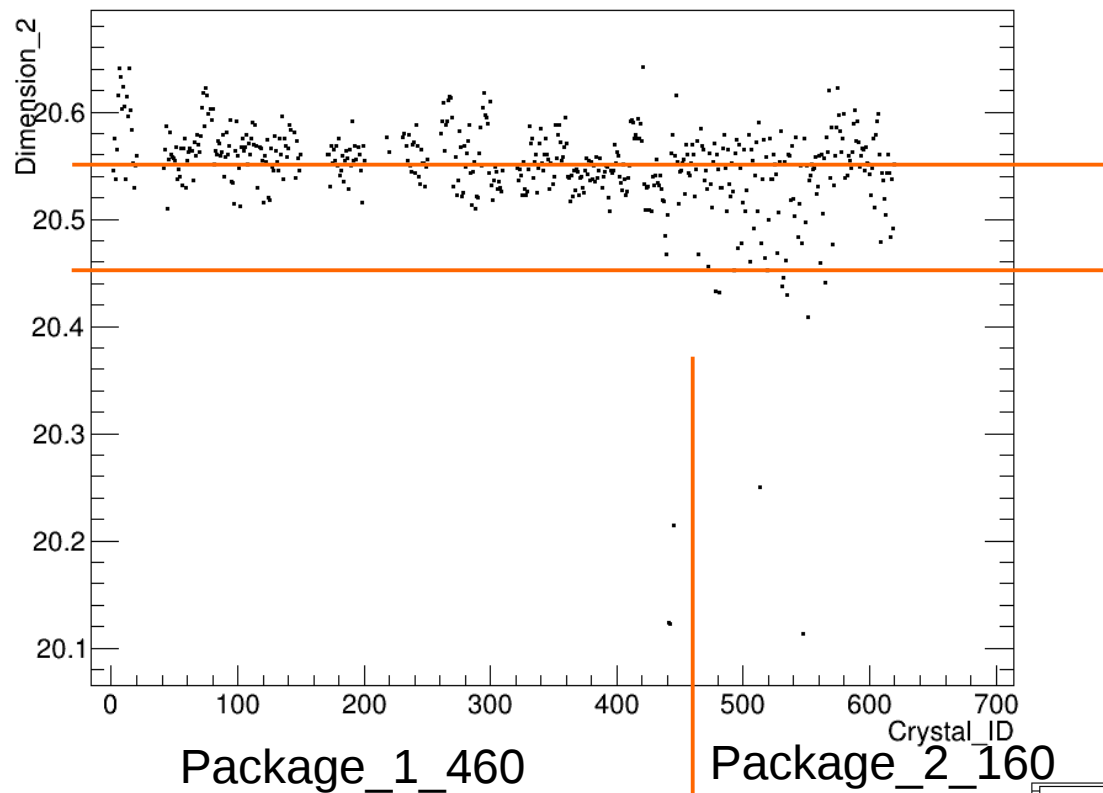


Dimmer crystals, QA check is ongoing, expect worse transmittance than others



Non uniform edges, some edges polishing is not accurate

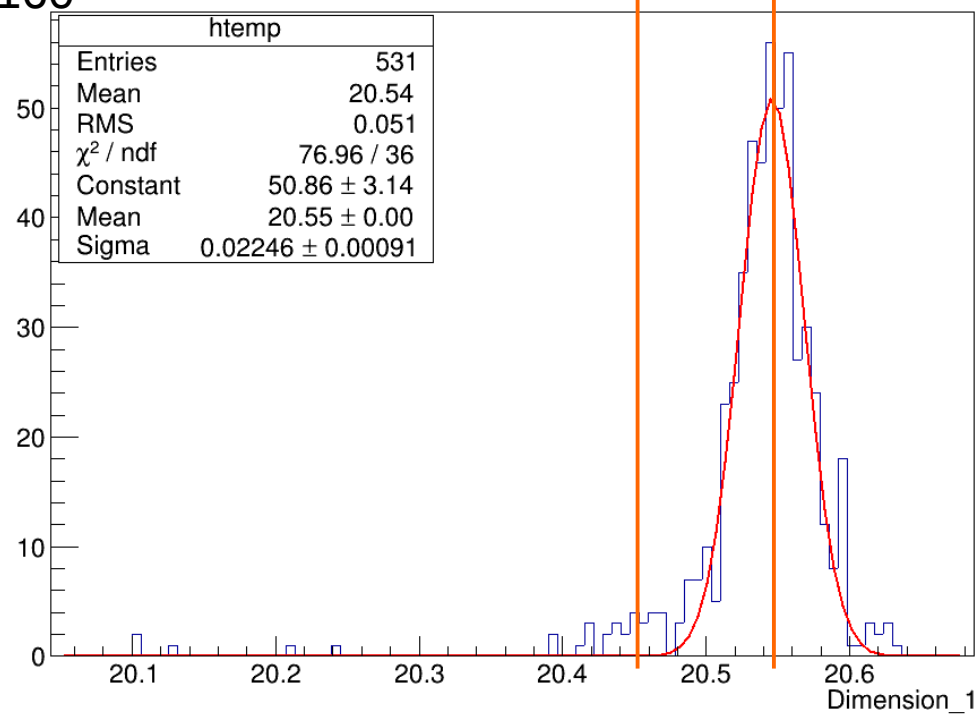
Dimension_2 : Crystal_ID

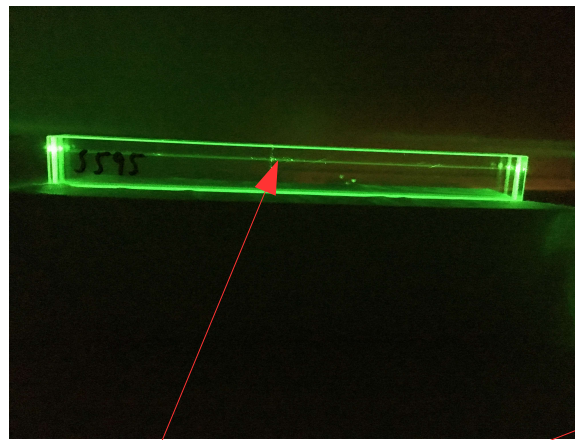
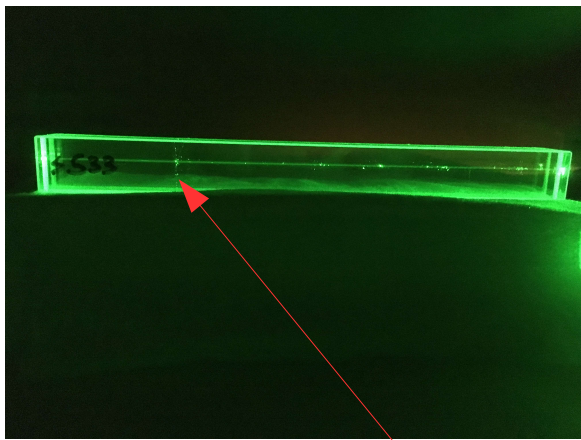


NPS SPECS
20.5+/-0.05

NPS SPECS
20.5+/-0.05

Dimension_1





Contamination in crystals volume, visible dots layers, dense dots areas.
Result is bad transmittance spectrum and nonuniform LY

Traces of polishing film, bad control of polishing procedure.
Result is bad, non uniform transverse transmittance along
the crystal.

