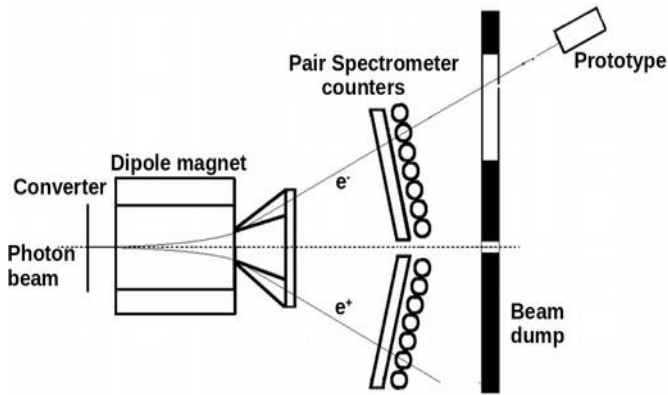


The EEEMCAL beam tests with Pair Spectrometer in Jlab HallD



- HallD parasitic test beam area, secondary lepton beam with energy range (3-6) GeV
- Trigger based measurement method and streaming readout (optional)
- Instrumented prototypes with SiPM or PMT photosensors (3x3 matrix) to measure the performance of the calorimetry scintillator materials PWO and SciGlass

- PWO crystal quality check and vendor comparison for NPS, FCAL insert projects and eRD1 consortium
- Optimize and test SiPM readout chain with new generation PWO crystals
 - Readout using SiPM matrix considered and development ongoing
- Test/optimize the entire readout: preamps, fADC or Waveboard digitizers in combination with streaming DAQ system
- SciGlass quality check, energy resolution evaluation and different polishing methods comparison
- Optimize and test SiPM readout chain with next generation SciGlass

