

CPS Radiation Simulation Update

Gabriel Niculescu
James Madison University

CPS Meeting 06/26/2020

June 26, 2020

Not much to report ...

- revived the heat transportation code (...)
- got CAD drawings from Josh (thanks!)
- redone calc. w/ WCu insert (as opposed to Cu alone)
- KLong communication/help

Disclaimer

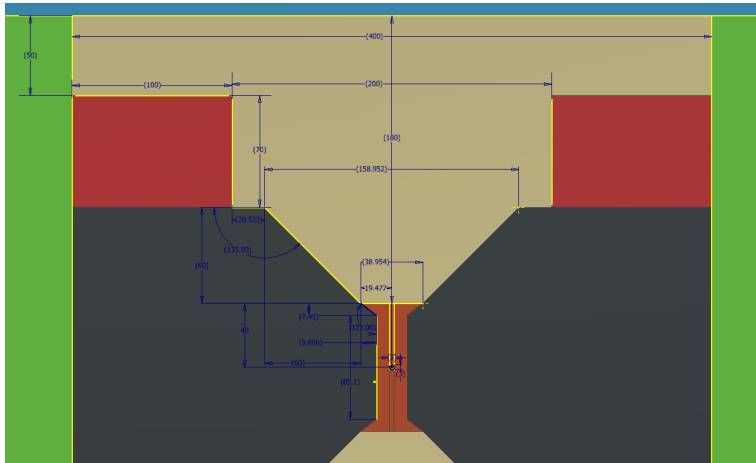
- ...as usual!



Jefferson Lab



From Josh



■ Copper-Tungsten Alloy

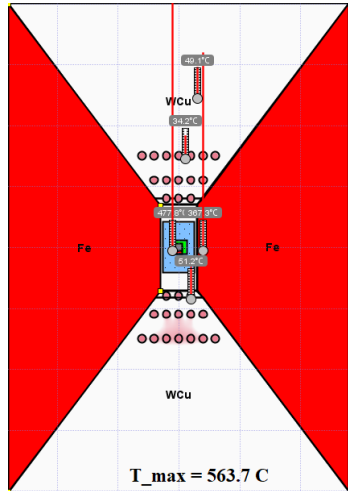
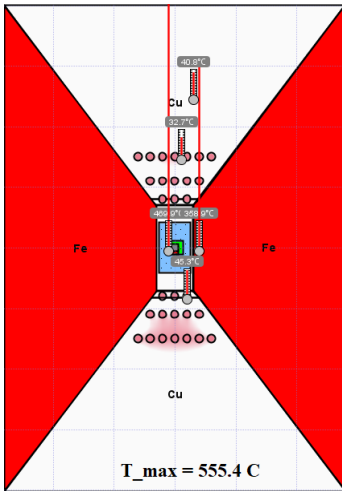
■ Magnet Coils

■ Solid Copper Core

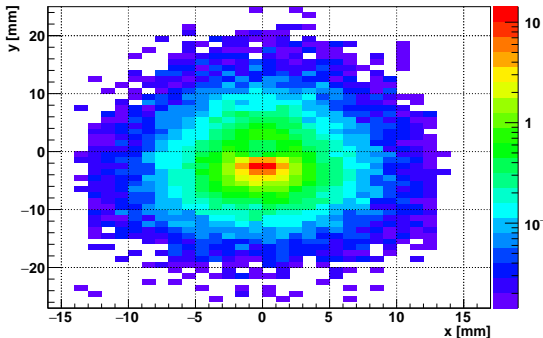
■ Magnet Poles

...to be implemented in heat transport code.

Cu vs WCu setup



Same heat load*, not much temp diff.



GN's To Do List...

- Heat transport code up and running (OK).
- CAD drawings of the central piece profile (acquired!).
- Double-checking heat deposition (IN agreed to help).
- K.long helping as needed.

Thank you!