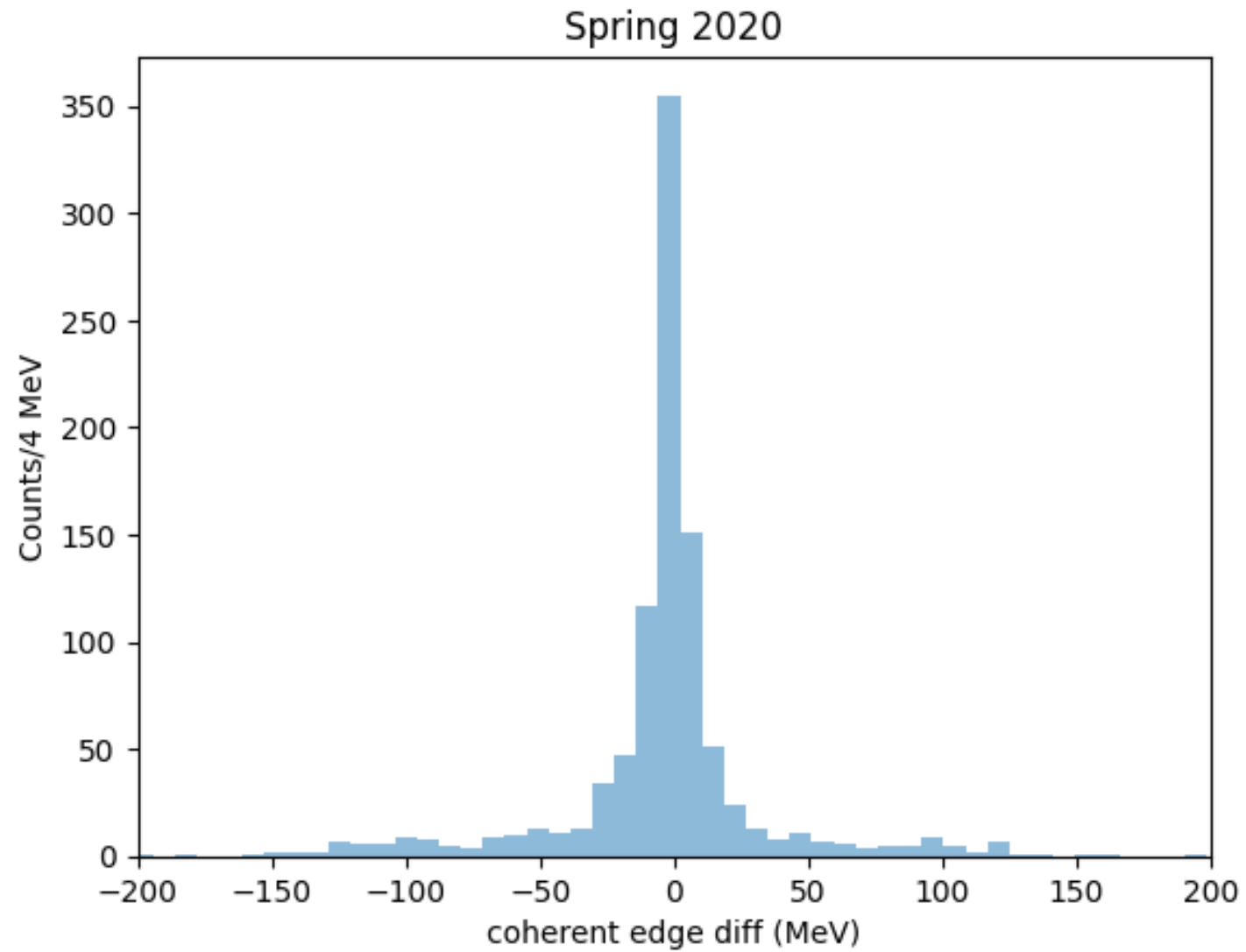
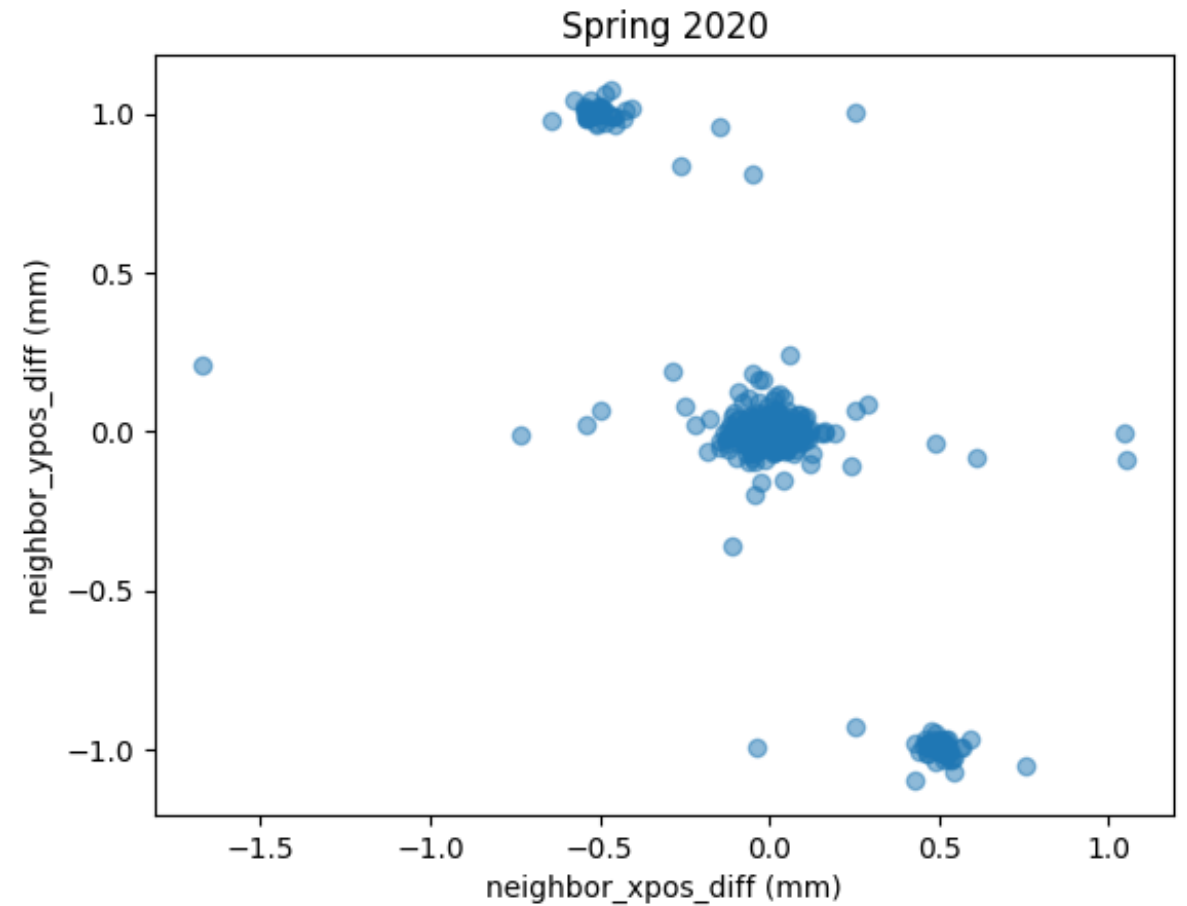
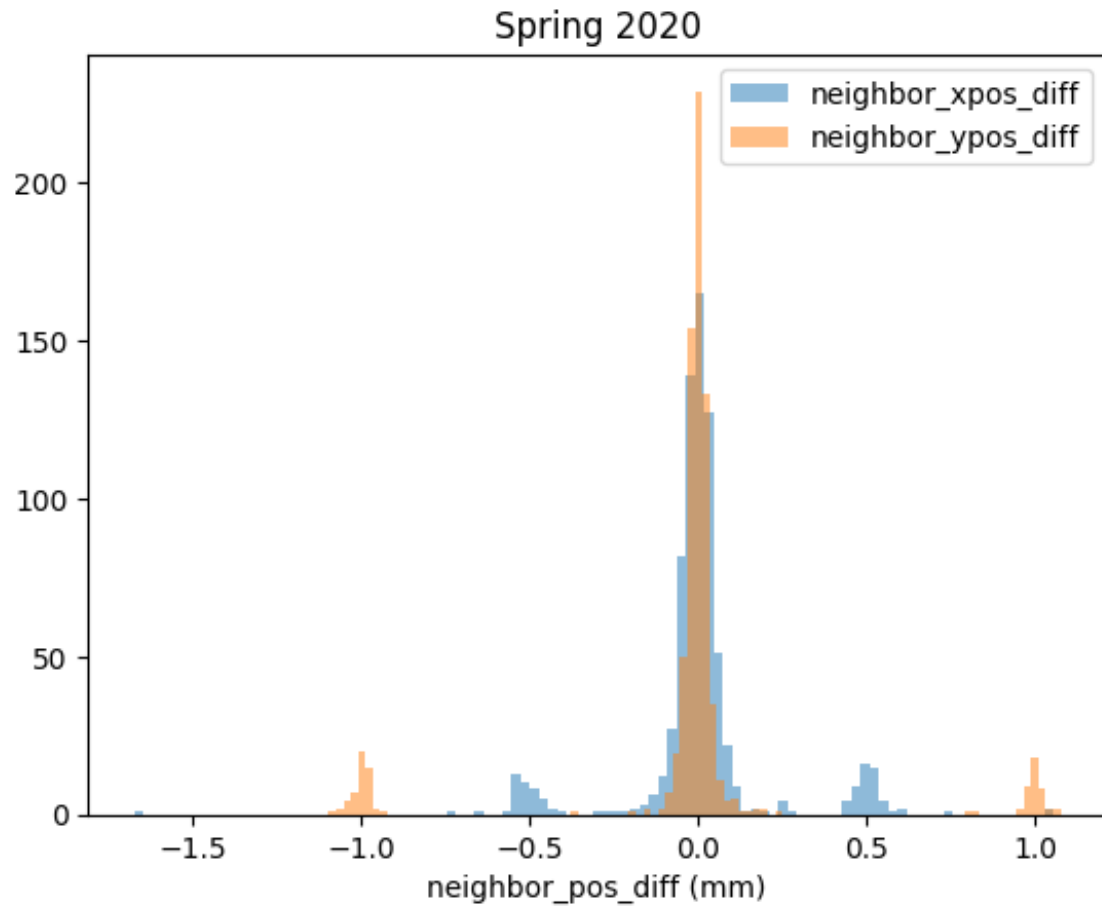


- Change of coherent edge before and after nudging

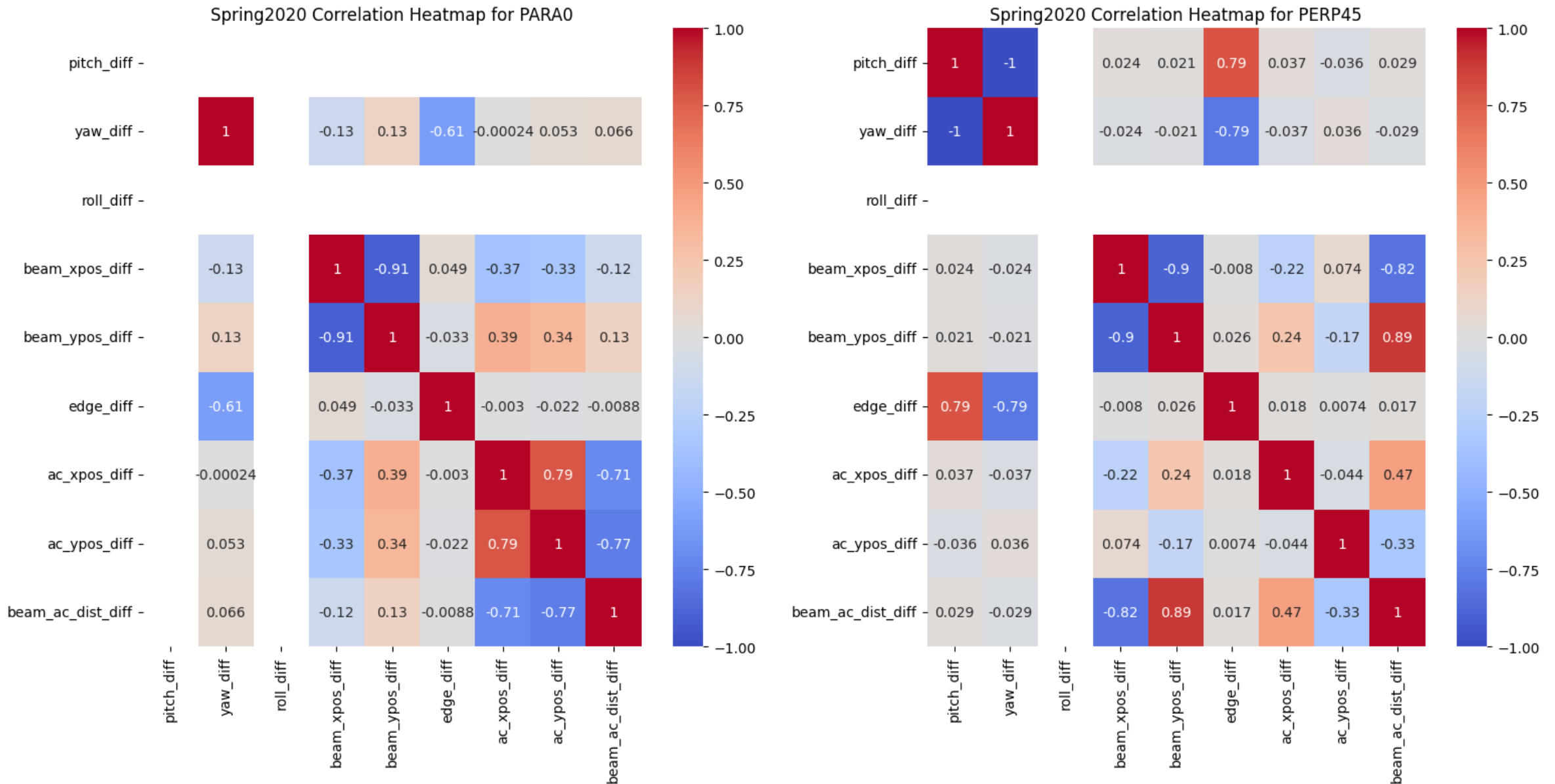


- Neighbor nudge events: same orientation, adjacent
- Position difference = current values before nudging – previous values after nudging

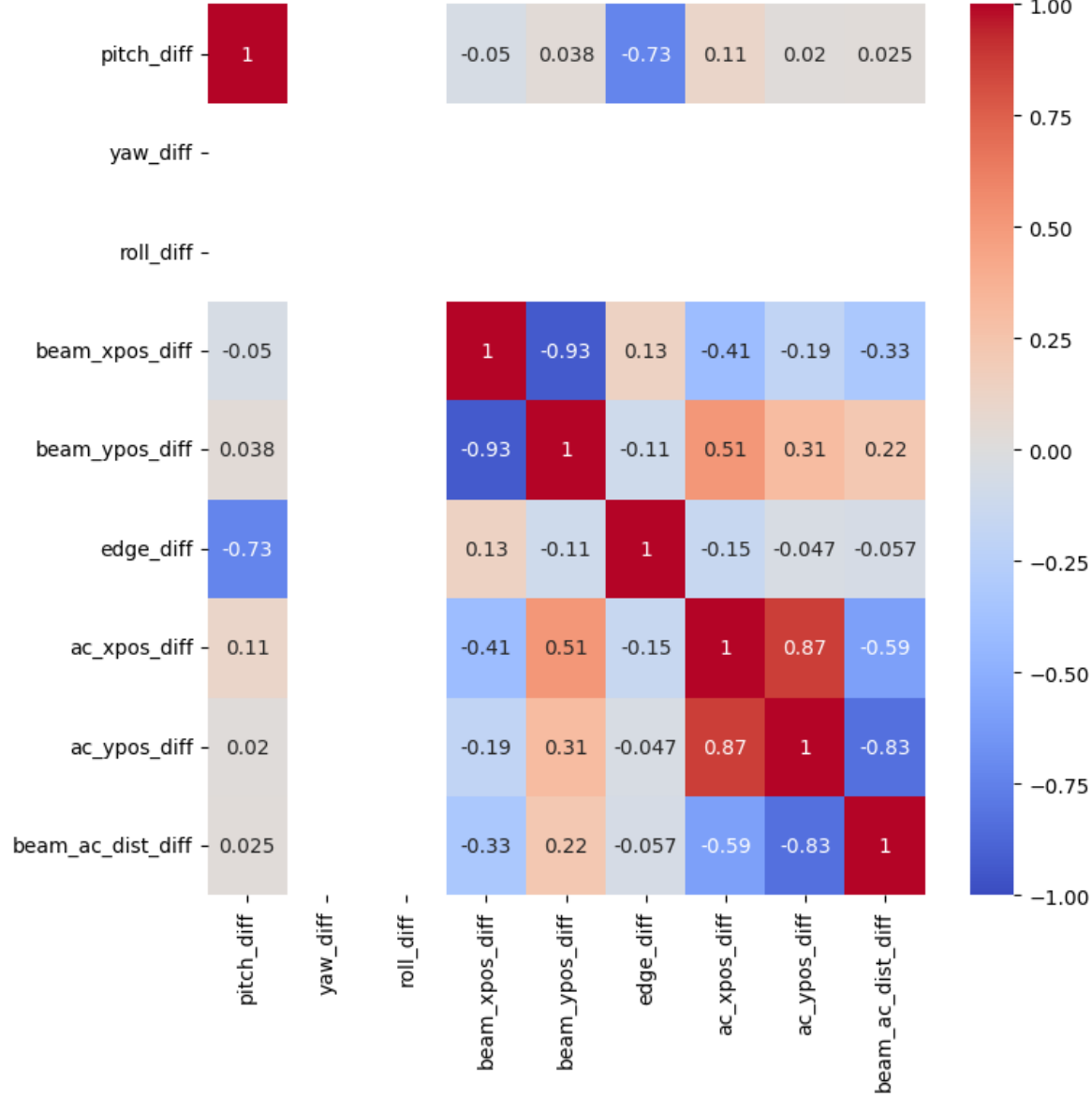


- Distance between beam position(5C11B) and active collimator position on the XY plane

- $$\text{beam\_ac\_dist} = \sqrt{(x_{5c11b} - x_{ac})^2 + (y_{5c11b} - y_{ac})^2}$$



Spring2020 Correlation Heatmap for PERP90



Spring2020 Correlation Heatmap for PARA135

