

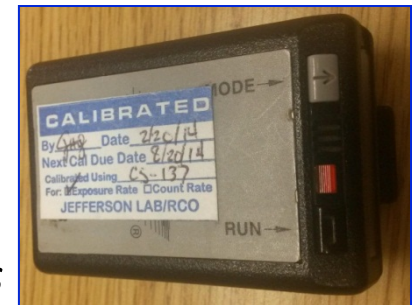
Accessing the Tunnel/Halls

- Personnel

- Sign *General Access RWP*
- Have Personal Dosimeter, or Supplemental Reading Pocket Dosimeter (SRPD*), or escort with SRPD*
- Wear suitable shoes and clothing

- Machine

- State needs to be *Restricted* or *Controlled Access*
 - *Restricted Access*: Use Controlled Access points or unlocked Exit Stair doors
 - *Controlled Access* : Use Controlled Access points with from MCC



* SRPD issued by RadCon Division or through Public Affairs Office

Personnel Access System

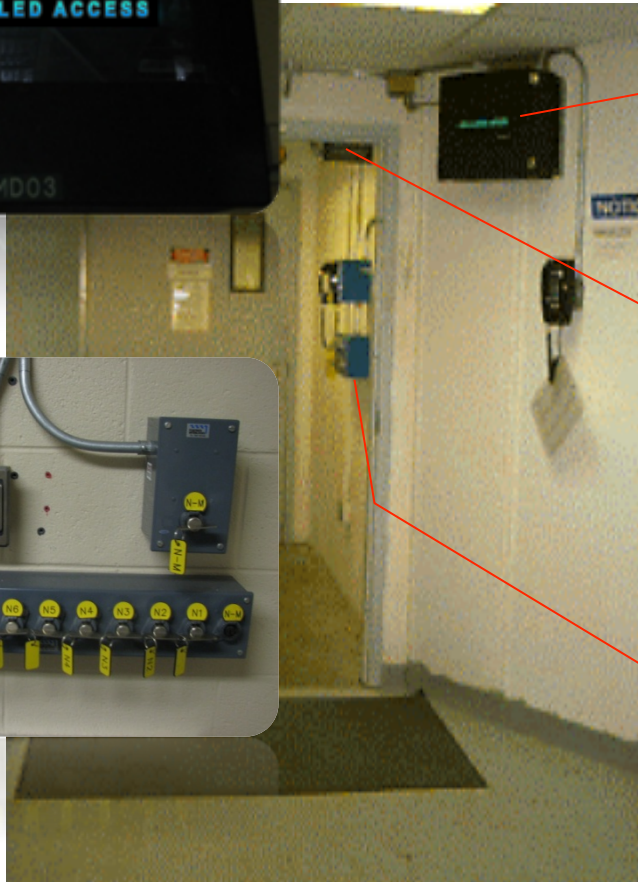


Message
Display



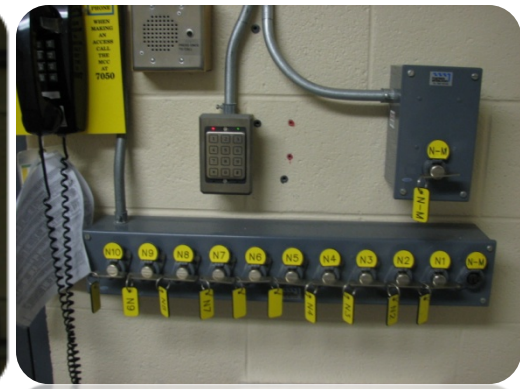
Magnetic
Lock

Access Key
Bank

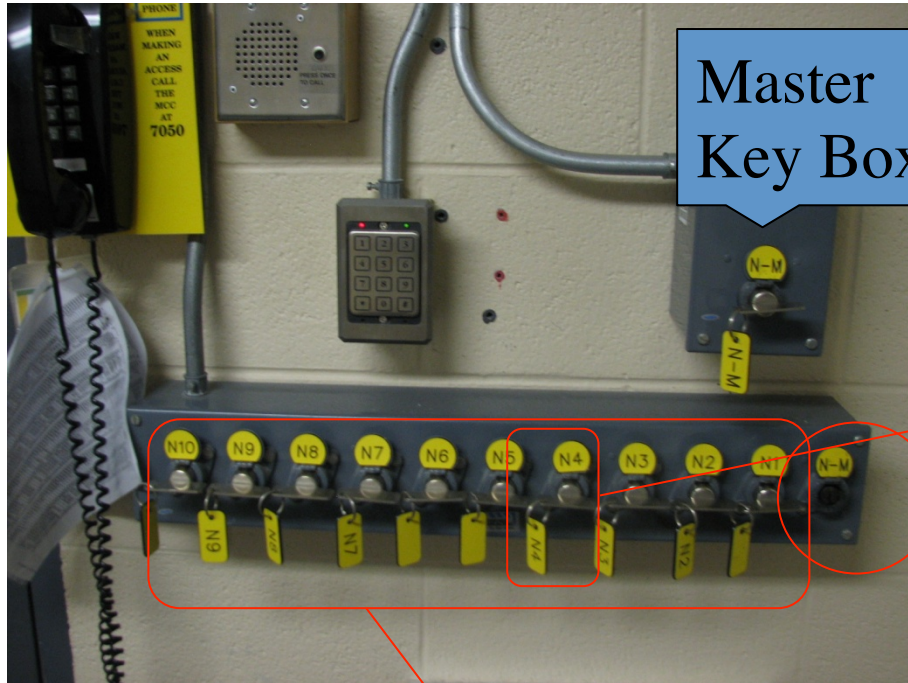


Accessing the Tunnel/Halls

- Check Status Display Screen for *Restricted Access* or *Controlled Access*
- If *Restricted Access*, open the door and proceed in
- If *Controlled Access*,
 1. Contact the Safety System Operator (SSO) at ex.7050 and request the outer door be unlocked
 2. Once inside the Access Room, call the SSO again to verify OSL and ODH requirements and to have them release the Master Key



Using the PSS



Master
Key Box

Exchange Key #

10 Exchange Keys

Master Key
Slot