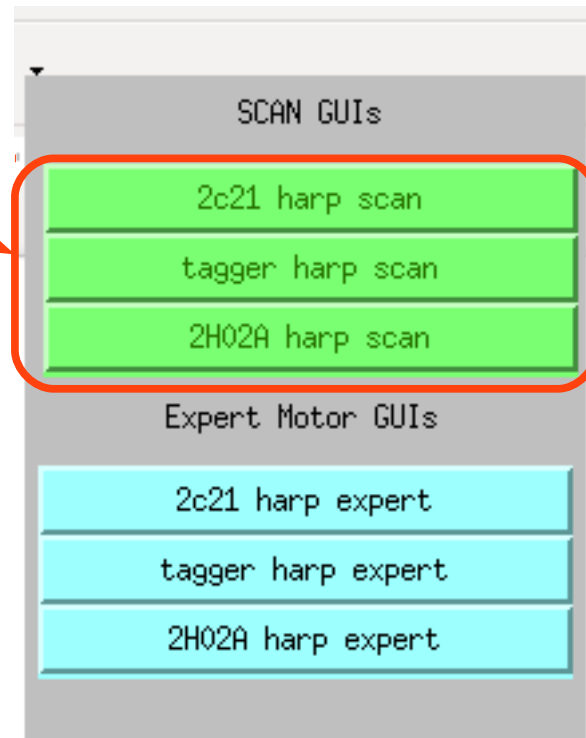


Choose the harp from SCAN GUIs

Please don't use any of Expert Motor GUIs, unless you were instructed to do so



Do Harp Scan

Please don't modify set values, unless you are instructed to do so

harp_2c21

Start Scan at: 25.0000

End Scan at: 30.0000

Speed to start point: 5.0000

Speed during scan: 0.5000

Time between scaler reads: 0.1000

Filename: harp_2c21 03-07-15_17:40:41

SCAN 0.000 Done Analyze Scan Data

“SCAN” : to do a harp scan

“Analyze Scan Data” : to fit/Analyze scan data,
A new window will pop-up (See next page)

Don't push any of Expert GUIs buttons, unless you are instructed to do so.

SCAN GUIs

2c21 harp scan

tagger harp scan

2H02A harp scan

Expert Motor GUIs

2c21 harp expert

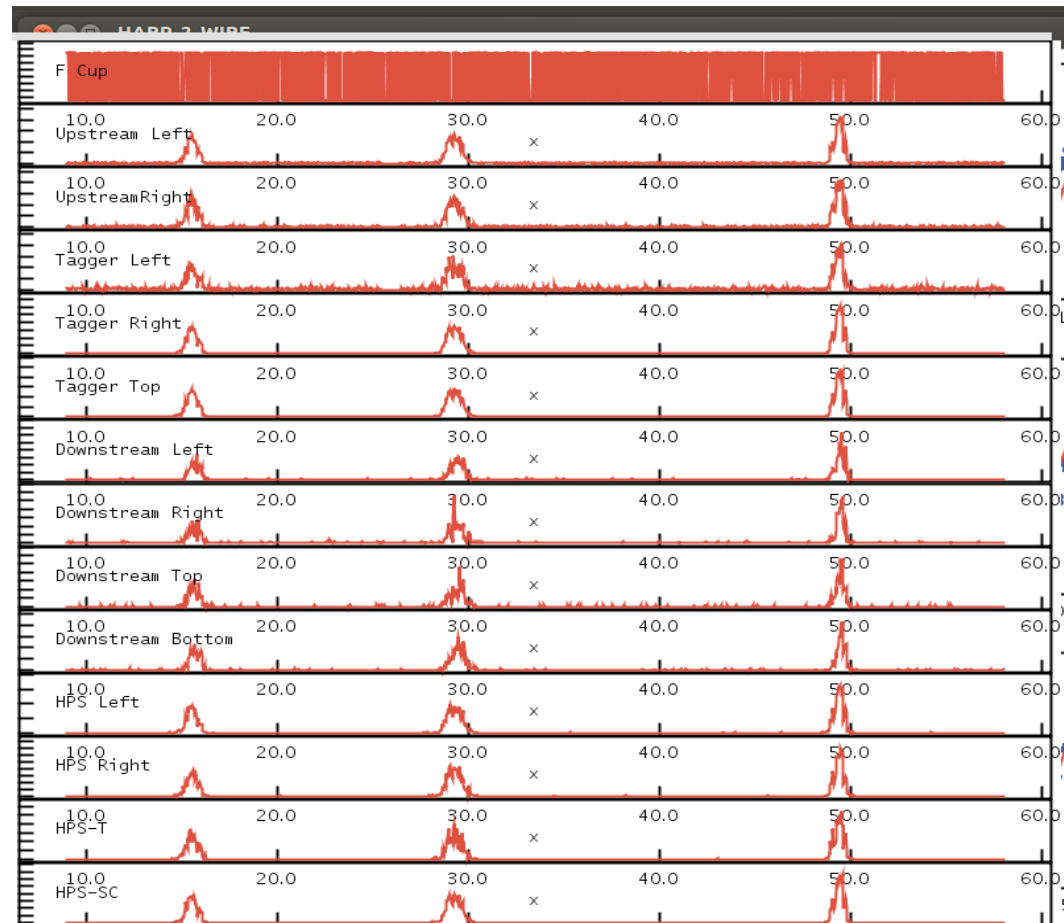
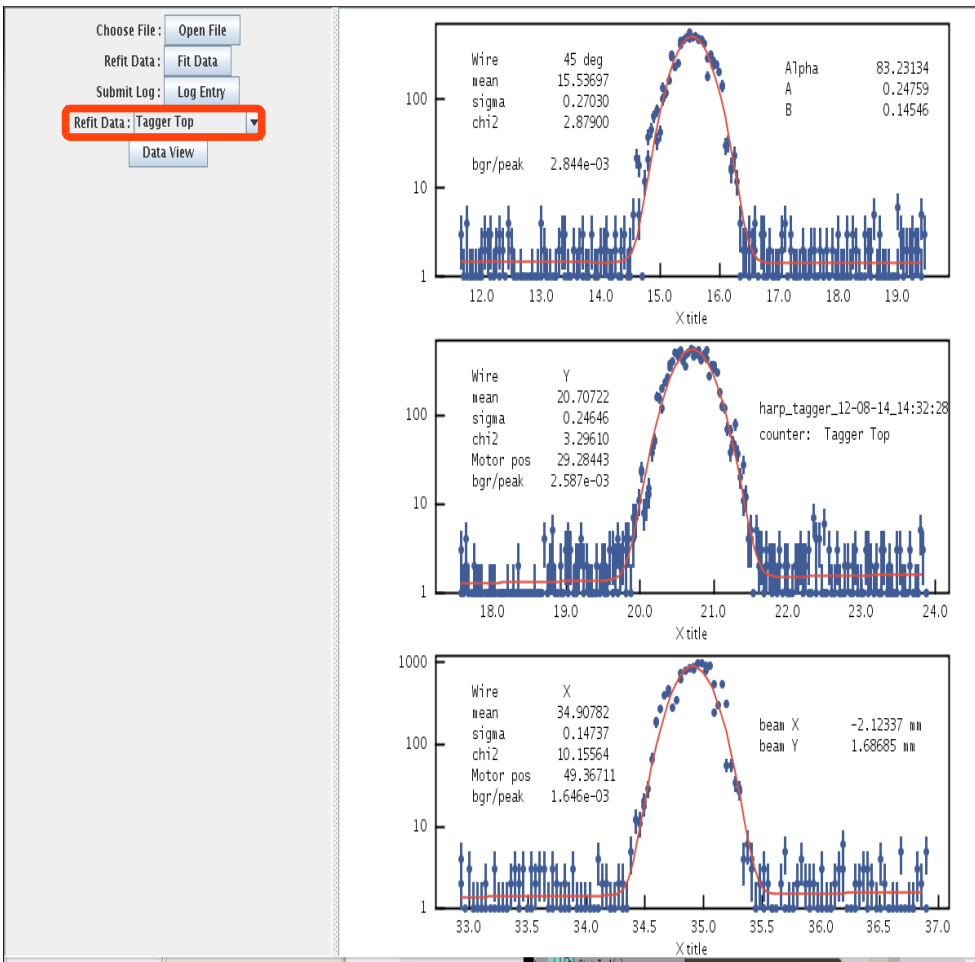
tagger harp expert

2H02A harp expert

Fitting Harp Scan data

1st choose which counter you want to fit, by using the “Data View” button

Will pop-up when you push “Data View”
You can judge which counter is better to fit

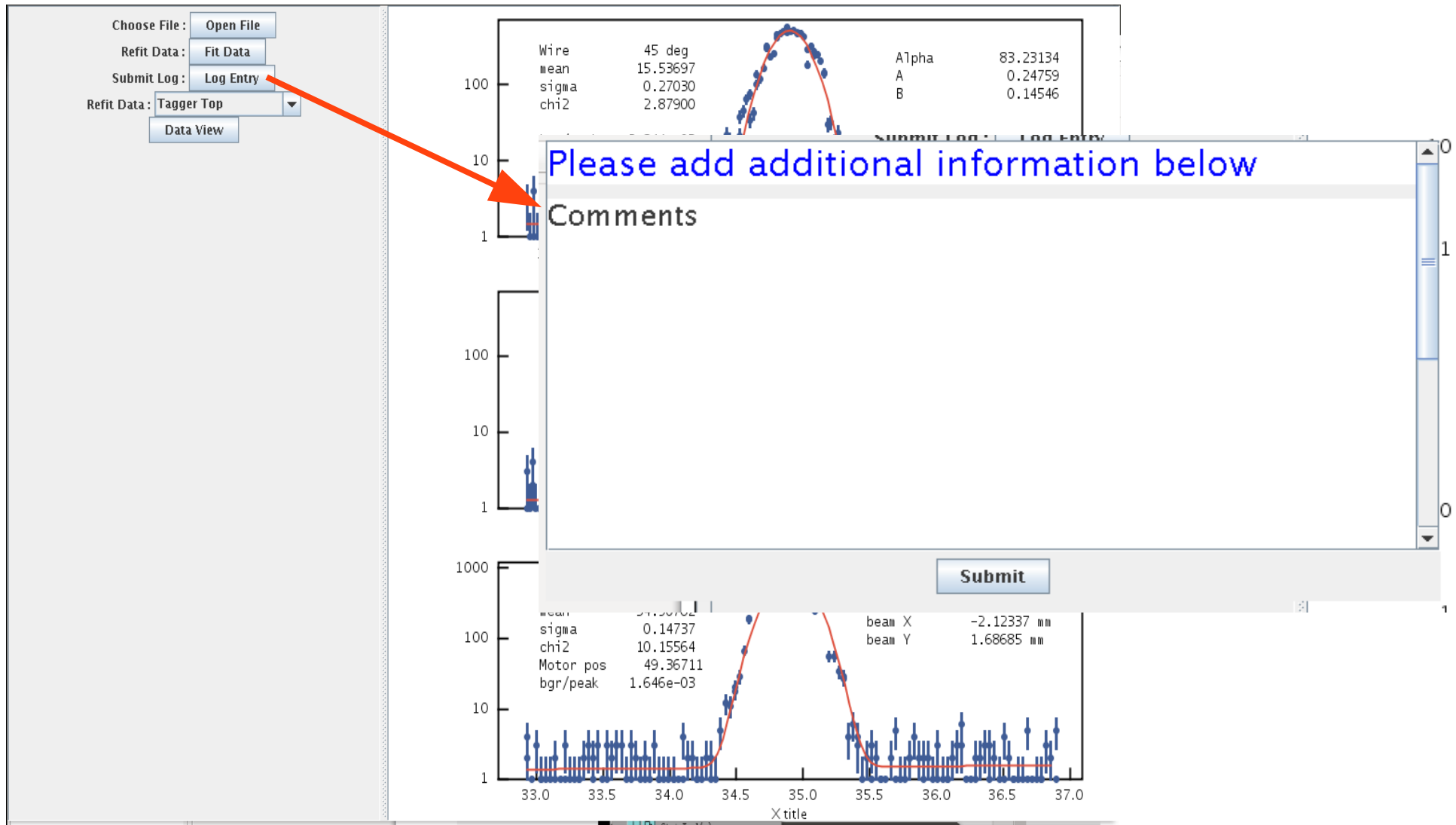


2nd from drop down menu select which counter you want to fit, then push “Fit Data” button.

If fit failed, choose another counter and try to fit again

Submit fit to Elog

Push “Log Entry” button and in a pop-up window make your comments (if you have any), then push submit



To re-analyze previous files

Push the “Open File” button to open old scanned files, choose desired File then the same way analyze the data.

Note! Don't change directory in the “Look in” to open data from another harp

Choose File : **Open File**

Refit Data : **Fit Data**

Submit Log : **Log Entry**

Refit Data : **Upstream Left** ▼

Data View

Look In: **harp_2c21**

- harp_2c21_03-07-15_07:35:58.txt
- harp_2c21_03-07-15_08:24:14.txt
- harp_2c21_03-07-15_10:37:23.txt
- harp_2c21_03-07-15_10:46:45.txt
- harp_2c21_03-07-15_12:33:52.txt
- harp_2c21_03-07-15_13:46:47.txt
- harp_2c21_03-07-15_14:38:14.txt
- harp_2c21_03-07-15_14:47:10.txt
- harp_2c21_03-07-15_15:20:58.txt
- harp_2c21_03-07-15_15:57:50.txt
- harp_2c21_03-07-15_16:12:37.txt
- harp_2c21_03-07-15_16:21:15.txt

File Name: _____

Files of Type: **Harp Scan Files**

Open **Cancel**

Wire	Wire X
mean	19.21685
sigma	0.01779
chi2	199.64828
bgr/peak	7.717e-06

harp_2c21_12-05-14_05
counter: Upstream Le