

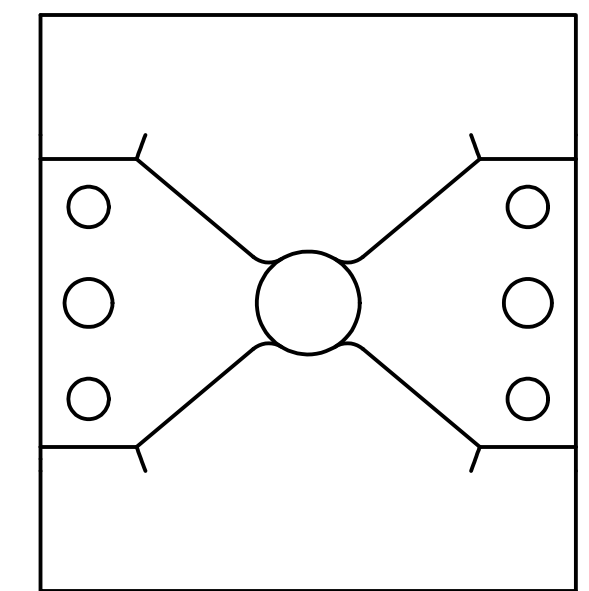
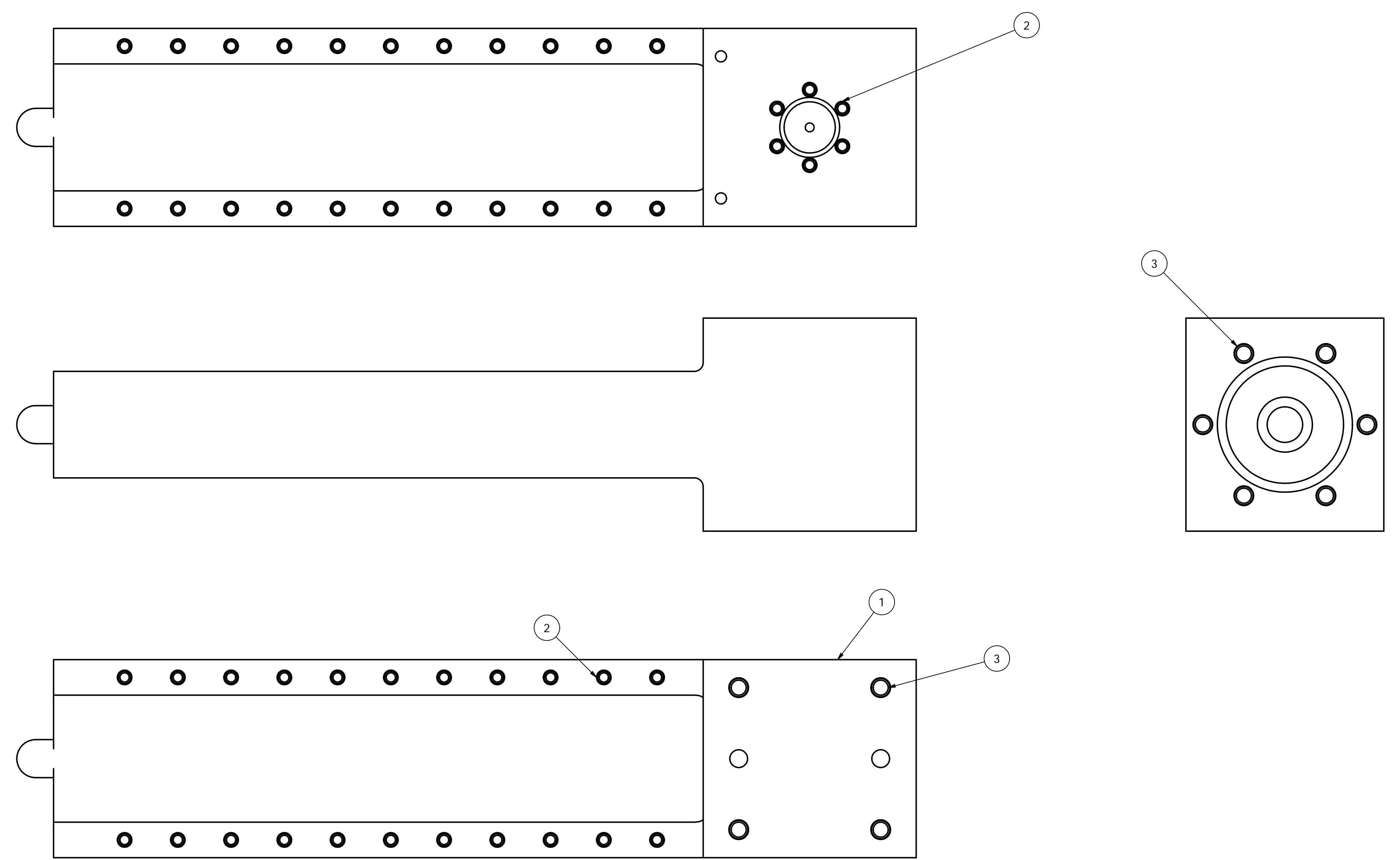
8 7 6 5 4 3 2 1

D

C

B

A



NOTE:
INSERT HELICOIL THREADED INSERTS
USING PROPER TOOLS

PARTS LIST				
ITEM	QTY	PART NUMBER	DESCRIPTION	MATERIAL
1	1	TGT-103-1000-0101	Tritium cell block main body	Aluminum 7075 T-651 SB-209
2	28	1185-2CN328	Heli-Coil Threaded Insert 8-32 x 0.328 Long	SST 18-8
3	10	1191-4CN500	HeliCoil 1/4-28 x 0.5 SST 304	SST 18-8
4	22	1185-2CN3281	Heli-Coil Threaded Insert 8-32 x 0.328 Long	SST 18-8

DOCUMENT CONTROL STAMP	DIM & TOL PER ASME Y14.5 - UNLESS OTHERWISE SPECIFIED DIMENSIONS ARE IN INCHES TOLERANCES ARE: FRACTIONS ±1/64 DECIMAL .XX±0.01 ANGLE ±0.5° .XXX±0.005	APPROVALS	DATE	JEFFERSON LAB TARGET GROUP THOMAS JEFFERSON NATIONAL ACCELERATOR FACILITY NEWPORT NEWS VIRGINIA U.S. DEPARTMENT OF ENERGY Hall A Tritium Target Target Cell Cell Block
		DRAWN D. Meekins	11/1/2011	
MATERIAL VAR	THIRD ANGLE PROJECTION	CHECKED		
FINISH VAR UNLESS OTHERWISE NOTED		APPROVED		
DEBUR AND BREAK ALL SHARP EDGES ACCEPT AS NOTED Do Not Scale Drawing		APPROVED		
		APPROVED		SIZE: DWG NO D TGT-103-1000-0010
		SCALE 1:1		ASSY. NO.: SHEET 1 OF 1

8 7 6 5 4 3 2 1